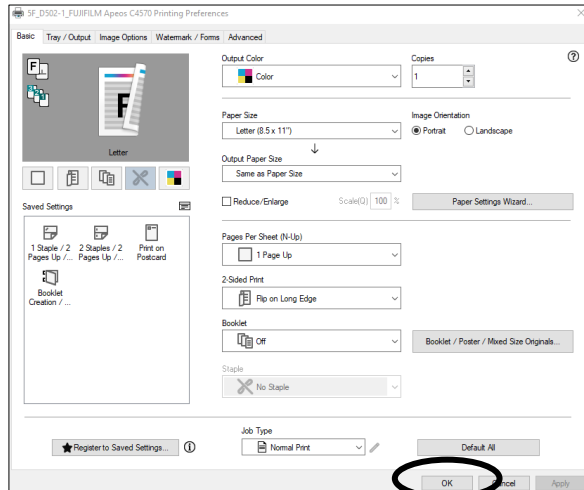


## 3-7. Campus Printers

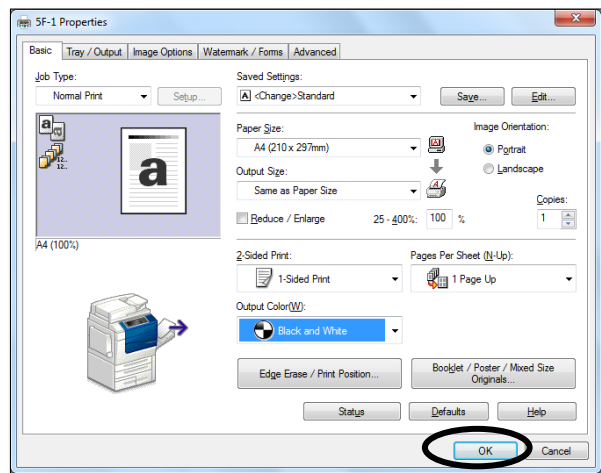
### 1. Printing from Shared PCs

Select the nearest printer for printing.

If needed, select [2-sided print] or [Multiple-up] or [Output Color] under [Property] → click [OK]



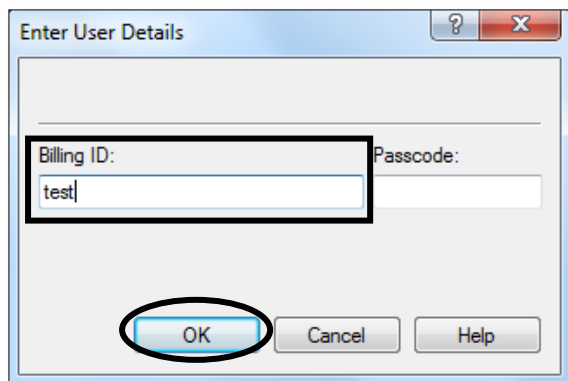
[5F-1, 5F-2]



[4F-1, 5F-3, 6F-1, 6F-2]

In the [Enter User Details] window, enter your [Billing ID] → click [OK]

You can type the ID of your choice for [Billing ID].



Insert your card in the card reader next to the printer. Note: You CANNOT transfer points between cards.



For GRIPS ID cards



For SUICA • PASMO cards

### 3. Campus Life

How to change the interface language setting on 5F-1 and 5F-2 printers:

Press [power] on the printer → press [globe icon]

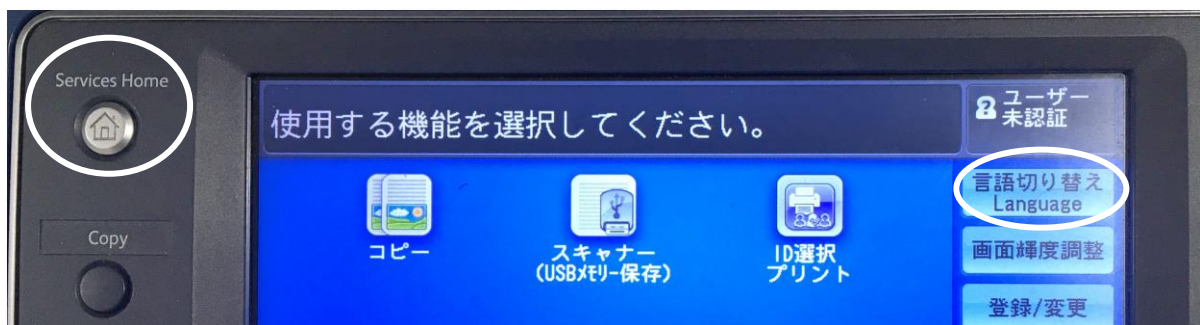


Select language → press [OK]



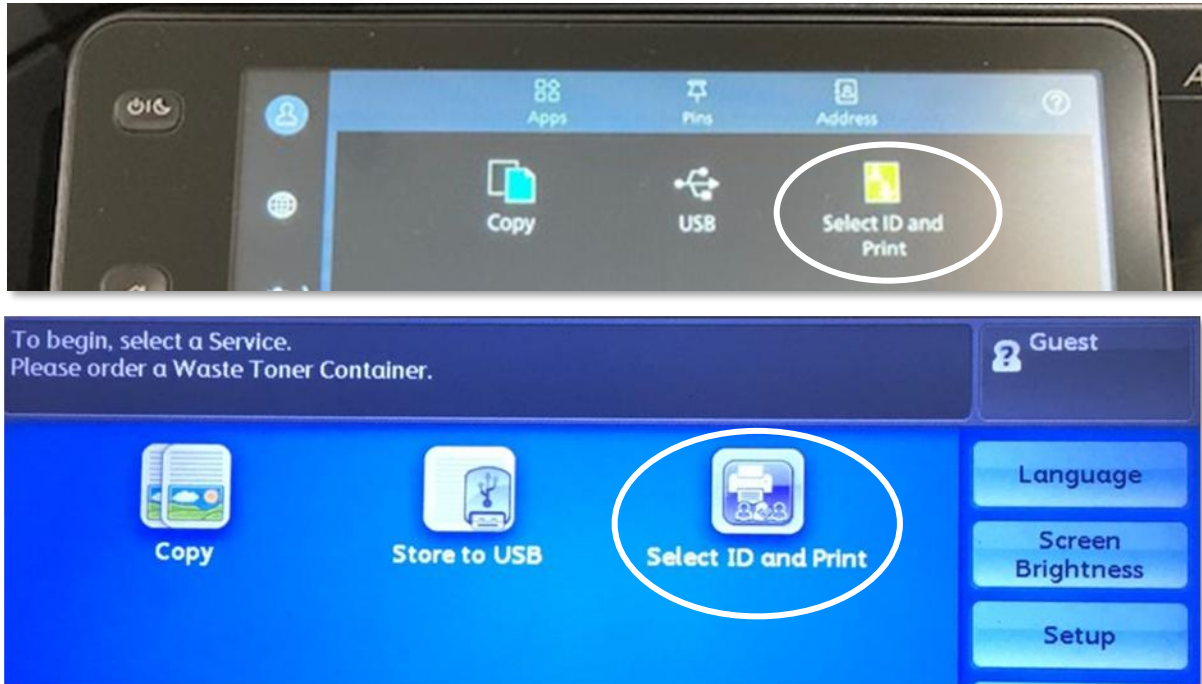
How to change the language setting on 4F-1, 5F-3, 6F-1, and 6F-2 printers:

Press [Service Home] on the printer → press [Language] to change the interface language



### 3. Campus Life

Press [Select ID and Print].



※If the printer you selected is in use or is being repaired, you can transfer your data between the following printers.

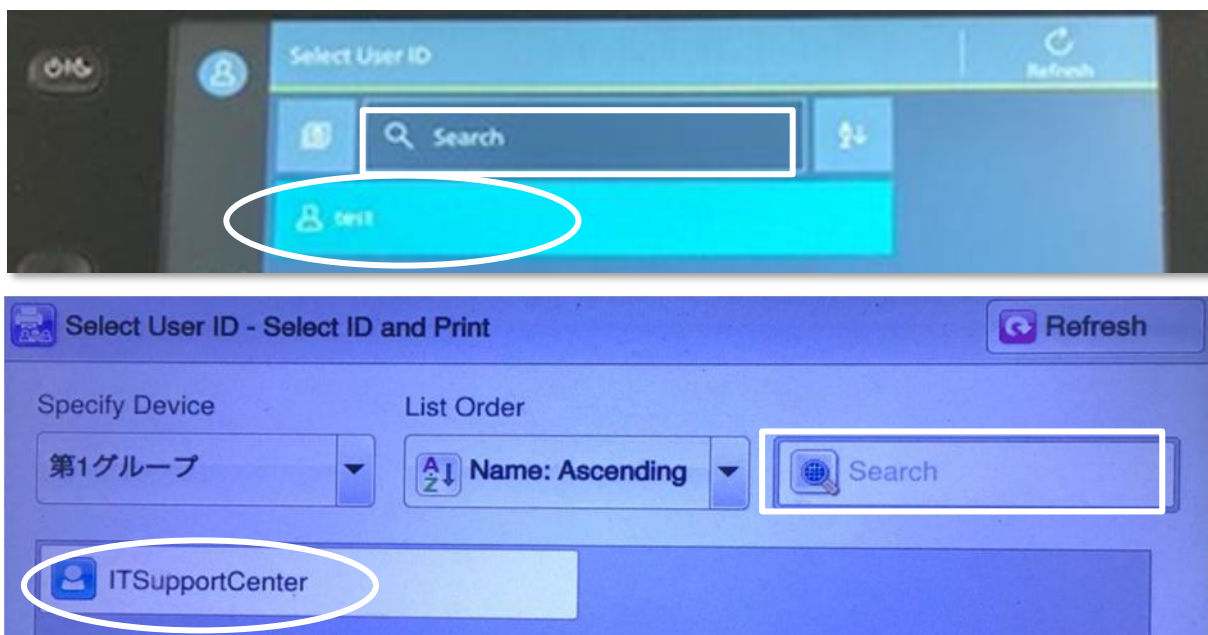
- 5F-1 and 5F-2
- 6F-1 and 6F-2

E.g., if you send a document data to printer 5F-1 and it is in use, you can print from printer 5F-2 without resending the data from your PC.

Note: If you wish to print from an unlinked printer such as 6F-1 or 5F-4, you must resend your data.

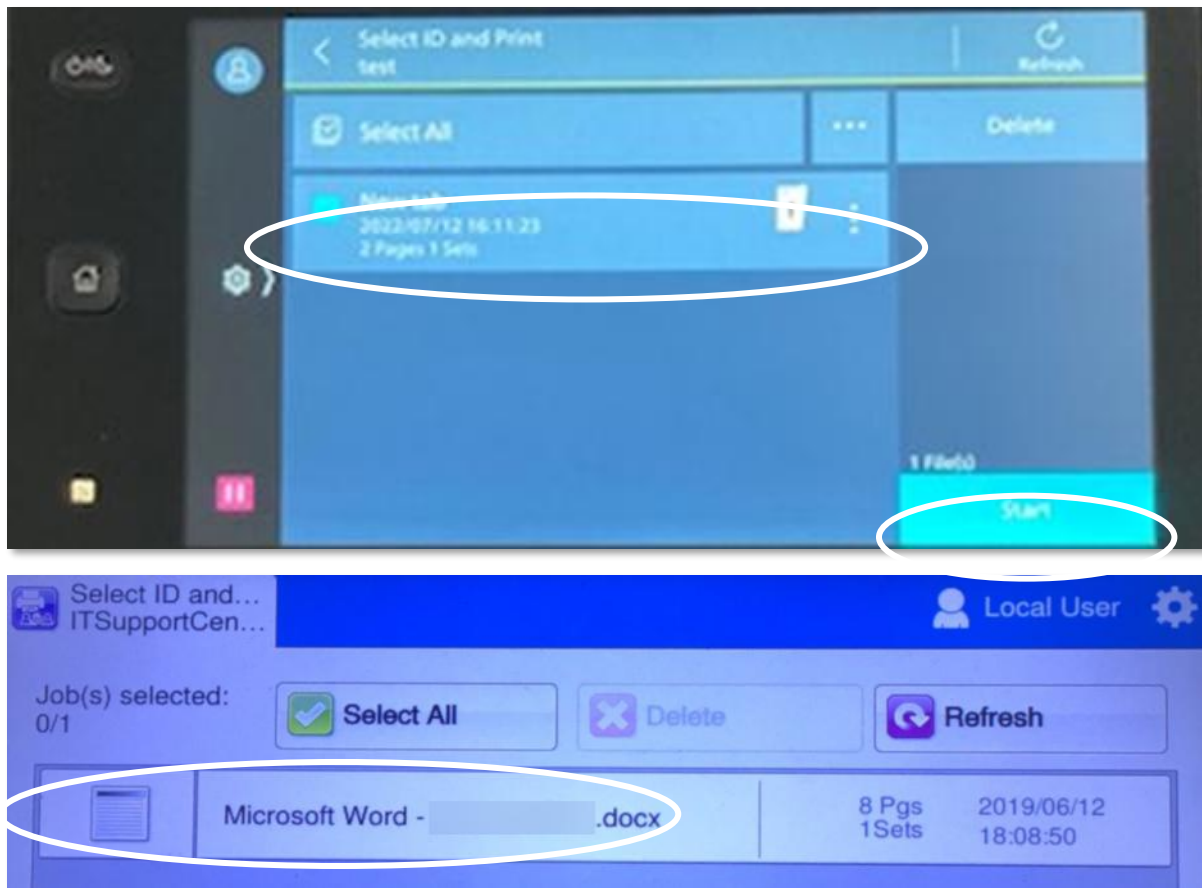
Select your user ID.

Note: You can use the search box to find your user ID.



### 3. Campus Life

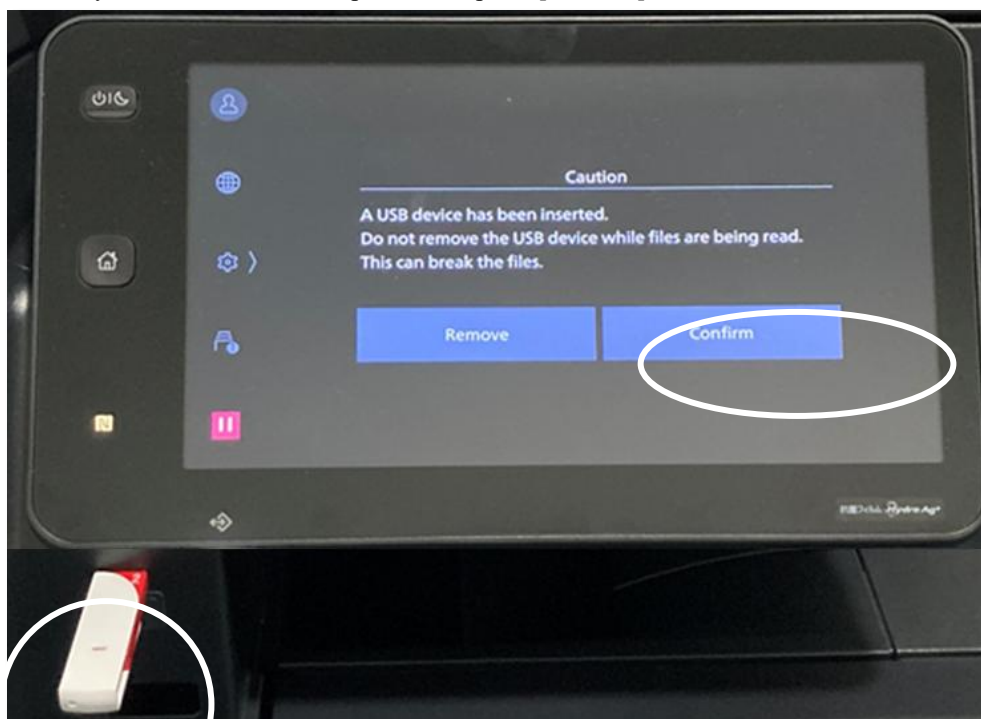
Select the document you wish to print → press [Start]



### 2. Printing from a USB device

Printing from a USB device on 5F-1 and 5F-2 printers:

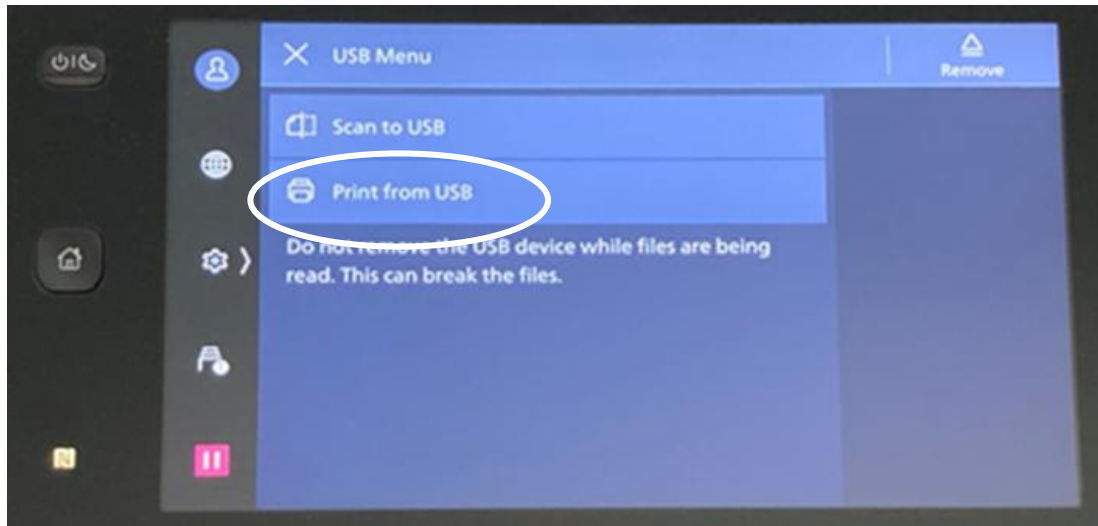
Connect your USB device to the printer → press [Confirm]





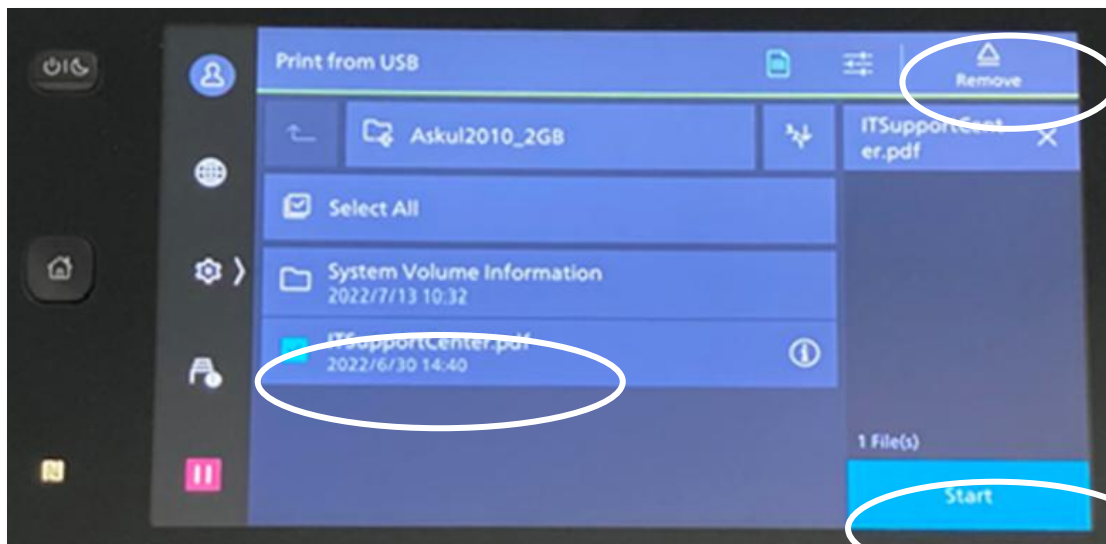
### 3. Campus Life

Press [Print from USB]

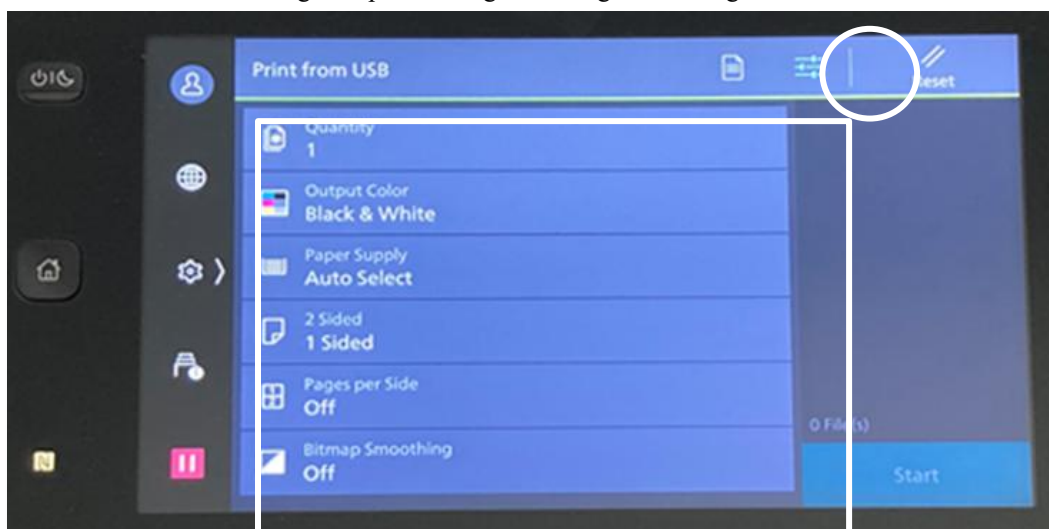


Select the file you wish to print → press [Start]

After printing, press [Remove] → disconnect your USB device from the printer



Press the menu icon to change the print settings → change the settings



### 3. Campus Life

Printing from a USB device on 4F-1, 5F-3, 6F-1, and 6F-2 printers:

Connect your USB device to the printer → press [Media Print]

Note: Only PDF files can be printed from a USB.

Note: Use a FAT 32 formatted USB drive



Press [Select All] → change the print settings if necessary → press [Start].

Note: If you wish to print a specific file, press [Select From List] → select the file → press [Start]

