

Joint Japan / World Bank Graduate Scholarship Program

Public Finance Program Tax Course



政策研究大学院大学
NATIONAL GRADUATE INSTITUTE
FOR POLICY STUDIES



Contents

1	Program Description	1
2	About GRIPS	11
3	Student Support	13
4	Admissions	15
5	Alumni	16

Address and Contact Information

Overview and Program Objectives

Since 1997, the Tax Course in the Public Finance program at GRIPS has been offering master's degree to nurture promising tax officials from developing countries. The program was established as part of the Partnership Programs supported by the Joint Japan/World Bank Graduate Scholarship Program (JJ/WBGSP), which awards scholarships to mid-career professionals for master's degree programs in development-related fields, including tax policy and administration.

The primary objective of the Public Finance Program is to provide scholars with the theoretical knowledge and practical skills essential for excelling as leaders in the field of customs and taxation. The program consists of two segments: an academic segment shared by tax and customs scholars, and a practicum segment dedicated to either tax or customs, depending on the scholar's chosen stream.

Public Finance Program

Tax Course

Customs Course

Degree offered : Master of Public Finance

Academic Segment

The academic segment provides a rigorous economics-oriented education that is aimed at the development of a broad understanding of the theoretical, empirical, and institutional aspects of customs/tax policy implementation and administration, within the context of developing countries' economic and social development. The academic segment culminates in the writing of a master's thesis facilitated by a course through which students develop their thesis with the input of academic supervisors and their peers, in which they have several opportunities to present their research.

Practicum Segment

The practicum segment of the Tax Course is administered by the faculty of the National Tax College (NTC), which is a training institution of the National Tax Agency (NTA) of the Ministry of Finance, in conjunction with the officials at the NTA. It involves weekly workshops and lectures; field trips to regional taxation bureaus; and the preparation of research papers. These experiences give students opportunities to enhance their learning on practical, administrative, legal, and institutional issues, thus integrating practical experience with their formal learning.



Outline of the Curriculum

One academic year at GRIPS is composed of four terms: fall (16 weeks), winter (8 weeks), spring (16 weeks), and summer (8 weeks).

Formal Academic Program

The formal academic segment of the master's program begins in October. It starts with focused instruction in the foundational skills of micro - and macroeconomics, as well as quantitative analysis. It then moves on to a range of applied topics that help students in understanding how to design, implement, and evaluate public policies – tax policy in particular – in accordance with development strategies. Topics include public finance, international economics, development economics, human resource management, and tax laws. Refer to the list of course offerings and the flow chart for the 2025-2026 on the following pages.

In addition to the required and strongly recommended elective courses, students can choose freely throughout the year from any of the extensive list of courses offered at GRIPS. Along with economics courses, GRIPS also offers numerous courses in various academic areas that are conducted in English. These range from public administration, political science, international relations, mathematical science, data science and social engineering, to a diverse range of interdisciplinary fields. Students can also choose to enroll in the Japanese language courses offered throughout the year at various levels of proficiency, although credits earned in these courses cannot count towards the degree.



Practicum Program

The practicum, which starts in October and continues until the end of June, involves lectures and workshops that instruct students on the Japanese tax system, tax law, and tax administration, as well as international taxation and tax treaty. It also involves several visits to regional taxation bureaus, tax offices, and tax counsel offices, where students observe actual national tax services and learn about Japan's national tax system and administration. In addition, with the assistance and guidance of NTC faculty, students prepare research papers to analyze issues/problems faced by the tax administration of their respective home countries.

Master's Thesis

Each scholar is required to produce a policy paper as their master's thesis, focusing on a topic related to public finance and taxation with an emphasis on policy discussion. During the program, scholars receive guidance from a faculty advisor and have multiple opportunities to present both their ongoing and completed research papers. Additionally, scholars are expected to participate in courses offered by the GRIPS Center for Professional Communication, which focus on enhancing their academic writing skills.



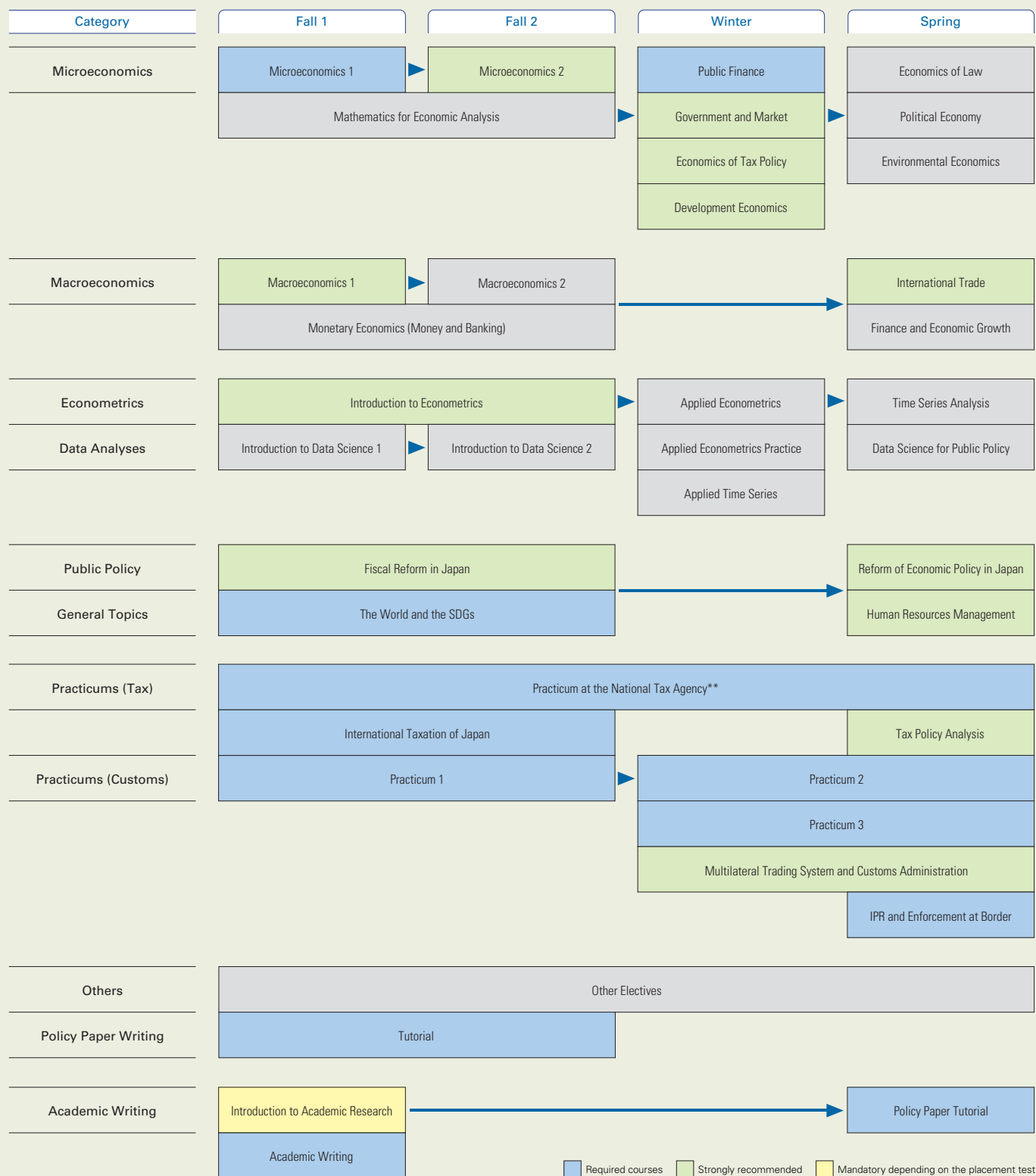
Academic Year 2025-2026 Curriculum Master's Programs

	Course No.	Course Name	Term	Credit
I Required Courses	PFP2520E	International Taxation of Japan	Fall	2
	PFP5010E	Practicum at the National Tax Agency	Fall through Spring(Session I)	8
	PFP5110E	Practicum in Customs Administration I	Fall	2
	PFP5120E	Practicum in Customs Administration II	Winter through Spring	2
	PFP5130E	Practicum in Customs Administration III	Winter through Spring	4
	PFP5210E	Intellectual Property Rights Enforcement at the Border	Spring(Session I)	2
	ECO1000EB	Microeconomics I	Fall(Session I)	2
	ECO3100E	Public Finance	Winter	2
	ECO4130E	Tutorial (PF)	Fall	1
II Highly Recommended Elective Courses	GEN5020E	The World and the SDGs	Fall	1
	ECO1060EA	Macroeconomics I	Fall(Session I)	2
	ECO2000EA	Microeconomics II	Fall(Session II)	2
	ECO2020EA	Government and Market	Winter	2
	ECO2720EB	Introduction to Applied Econometrics	Fall	2
	ECO3110E	Fiscal Reform in Japan	Fall	2
	ECO3130E	Economics of Tax Policy	Winter	2
	ECO3160E	Reform of Economic Policy in Japan	Spring	2
	ECO3135E	Tax Policy Analysis	Spring	2
	ECO3400E	International Trade	Spring(Session I)	2
	ECO3820E	Economic Development Based on ADB Experiences	Winter	2
	ECO3840EB	Development Economics	Winter	2
	PAD2560E	Human Resources Management	Spring	2
	PFP2500E	Multilateral Trading System and Customs Administration	Winter through Spring	2
	GEN5050E	Social Issue Workshop: Lessons from Japanese Experiences	Spring	2
	GEN5060E	Social Issue Workshop for Business-Driven Innovation	Fall	2
	GEN5070E	Workshop on Policymaking for Sustainable Development	Fall	2
	GEN5080E	Cybersecurity	Spring	2
	ECO1600E	Monetary Economics (Money and Banking)	Fall	2
	ECO2060EA	Macroeconomics II	Fall(Session II)	2
	ECO2790E	Data Science for Public Policy	Spring	2
III Elective Courses	ECO2760E	Applied Time Series Analysis for Macroeconomics	Winter	2
	ECO2770E	Applied Econometric	Winter	2
	ECO2780E	Applied Econometrics Practice	Winter	2
	ECO3000E	Mathematics for Economic Analysis	Fall	2
	ECO3104E	Political Economy	Spring	2
	ECO3200E	Economics of Law	Spring	2
	ECO3710E	Time Series Analysis	Spring(Session I)	2
	ECO3860E	Development History of Asia: Policy, Market and Technology	Spring	2
	PAD2670E	Public Expenditure Management	Spring	2
	MOR1050EB	Introduction to Data Science I	Fall(Session I)	2
	MOR2050E	Introduction to Data Science II	Fall(Session II)	2
	*Selected Topics in Policy Studies I - IV			
	Courses not listed in this table			
X Others	LAN0300E	Students must take LAN0300E, LAN0310E and LAN0320E. Students may be exempted from taking LAN0310E depending on the result of the English Placement Test and may be exempted from taking LAN0320E if they obtain the approval of their main advisor. **Courses offered by the Center for Professional Communication		Credits earned in these courses cannot count toward the degree.
	LAN0310E			
	LAN0320E			

Notes:

- Graduation Requirements: Students must have
 - been enrolled for at least a year;
 - completed a minimum of 32 credits(not including Category X course credits) and met the following requirements;
 - Tax students must have completed the following courses: PFP2520E, PFP5010E, ECO1000EB, ECO3100E, ECO4130E and GEN5020E from Category I
 - Customs students must have completed the following courses: PFP5110E, PFP5120E, PFP5130E, PFP5210E, ECO1000EB, ECO3100E, ECO4130E and GEN5020E from Category I.
 - received the necessary research guidance, completed their theses, and passed the final examination.
- Courses offered in the Program are subject to change.
- Students cannot take courses conducted in Japanese without Director's approval.
If a student takes the same course in both English and Japanese, only one course (2 credits) will count toward the degree.
- *Course Number, Instructor, and Term for these courses will be announced later when the course is offered.

Flow Chart for Core and Other Major Elective Courses



Brief Core Course Descriptions (Academic Segment)

The following are for category I and part of the Highly Recommended Courses only. For other courses, see <http://www.grips.ac.jp/en/education/information/syllabus/>

Public Finance

This course will provide a comprehensive understanding of how governments manage their finances and make economic decisions that impact the well-being of their citizens. Public finance explores the intricacies of government revenue, expenditure, and debt, shedding light on the complex mechanisms that shape fiscal policies. The course will also discuss the economic implications of government interventions as well as its crucial role in economic growth and welfare.

The World and the SDGs

The sustainable development goals (SDGs) adopted by the United Nations General Assembly in September 2015 present challenges that we all have to face, both globally and locally. This course, mandatory for all GRIPS students, offers an introductory overview of the state of the world in the 21st century through an examination of the historical development of the world system within the global eco-geological setting, and provides basic knowledge of the social, economic, political and ecological issues that are now being targeted by the SDGs. Throughout their participation in this course, the students are expected to think and re-think their major research focus at GRIPS within the wide perspective embodied in the SDGs.

Microeconomics I

This is an introductory course on microeconomics. It covers basic economic assumptions and concepts used to define behaviors of consumers and producers in the market. The course consists of three parts: consumer theory, producer theory and the equilibrium in a competitive market. In the consumer theory, preference, utility, budget constraints, utility maximization and demand curves will be introduced. In the producer theory, production and cost functions, profit maximization, and supply curves will be discussed. Finally, the concept and the determination of the equilibrium will be discussed.

Microeconomics II

Based on certain understanding of materials taught in Microeconomics I, this course expands the basic framework. This course covers various market structure such as monopoly, oligopoly, and monopsony using the framework of game theory. Then course also introduces several cases where the market fails to achieve efficiency and how to address those market failures.

Macroeconomics I

This is a first course in the macroeconomics sequence. The course will cover broad topics relating to major macroeconomic variables; e.g. money supply, inflation, unemployment, economic growth. Given that these variables can be changed over time and different across countries, we will use simple macroeconomic models to illustrate the underlying mechanism behind the change and difference. The focus of this course is on the long-run equilibrium.

Tax Policy Analysis

The participating students will learn through this course some policy options on countermeasures against taxpayers' noncompliant actions (mainly tax evasion, tax avoidance and nonpayment of taxes). Taxpayers' noncompliant actions take various forms and so do countermeasures against them. The class looks into typical methods of taxpayers' noncompliant actions and countermeasures against them.

Introduction to Applied Econometrics

This course helps students to understand applied econometric methods and to foster the skills needed to plan and execute their own empirical projects in economics. Topics include ordinary least squares estimation, panel data and fixed effects estimation, instrument variable estimation, difference-in-differences, and regression assessment. We study many examples and STATA package for actual estimation and application.

Government and Market

The objective of this course is to acquire an in-depth understanding of the economic roles of government in a modern market-based society. We seek to understand what governments should do (or should not do), what should be left to the market and to private individuals, and what would be the consequences of government policies. This course will help you to apply the principles and knowledge of microeconomics to current policy issues.

Fiscal Reform in Japan

The course discusses the current problems with Japan's public finance policy and the necessary reforms to address them. Japan's public finance faces several important issues such as huge government debt and rapid population aging. The course will discuss a fiscal consolidation plan, implementation of social security reform as well as medical care system and pension system.

Reform of Economic Policy in Japan

This course covers issues related to the formulation of economic policy. The main topics discussed include the current state of the Japanese economy and its weaknesses. Japan's economy has three major weaknesses: lagging in globalization, low productivity in the service sector, and inflexibility in the labor market. Knowledge of Japan's economic structural reforms towards increased productivity and labor market reform will be useful to many Asian countries which are experiencing or will experience rapid population ageing. Also, under discussion will be the role of government from the view point of economic growth.

International Trade

This course introduces the basic concepts, tools and information required for an understanding of the flow of goods across countries, i.e. international trade. We will investigate why nations trade, what they trade, and who gains from international trade. We will also analyze countries' motives for regulating international trade and the effect of regulatory policies on economic welfare.

Development Economics

This course aims to familiarize students with development problems and issues that are fundamental to developing countries.

Human Resources Management

Knowledge of Human Resource Management (HRM) has become critically important for the managers of public sector organizations. By working within a framework of academic analysis and through the practical experience of the instructor, students are expected to acquire managerial expertise and a practical sense of how public sector organizations are reformed.

Economics of Tax Policy

In this course, the students will acquire an in-depth understanding of the principles of taxation and the economics tools for analyzing tax systems and policy. In particular, students will gain hands-on experience conducting academic research using the econometric technique learned during the program. The overall goal of this course is that the students will be able to apply these principles, tools, and skills to work with current tax policy issues and fundamental policy reform options.

Brief Core Course Descriptions (Practicum Segment)

International Taxation of Japan

Governmental agencies take actions on people in general and some of them are dissatisfied with them. They believe that those actions are unjust or unlawful and dispute them in administrative review organs and courts. In the field of taxation, such a situation arises often because many taxpayers are aggrieved over the tax reassessments made on their returns. While it is true that tax reassessments are made more often on some issues than others.

In this class, we try to take a look at various causes for such disputes and make cross-country comparisons. Such disputes often arise because taxpayers try to avoid tax and there is opacity in the application scope of relevant tax provisions. Also, the class looks into how various disputes between people and the government are handled/resolved in various countries and how those differences among countries affect the number of disputes and the costs on disputants while much focus is to be on tax disputes.

Practicum at the National Tax Agency

This course comprises of lectures/workshops that are offered weekly from fall through spring. The sample schedule of this course is listed below. The aim of this course is to provide tax officials with knowledge on Japanese tax systems; tax law (concerning income tax and corporation tax etc.); and administration (tax examination, taxpayer service, revenue management and collection); so that they may contribute to the improvement of tax

administration in their respective countries. NTA officials and NTC faculty give lectures on practical aspects of Japanese tax administration. Students will visit the Regional Taxation Bureau, Tax Office, Tax Counsel Office, etc., to broaden the knowledge they acquire in the classroom. Students are also assigned a research paper that analyzes issues/problems faced by their home country's tax administration, with assistance and guidance from the NTC faculty. Students are thus strongly recommended to bring with them any relevant data/research materials from home.

Sample Schedule of Practicum at the NTA

Date			AM (10:00-12:30)	PM (13:45-16:15)
Oct-24	21	Mon	Opening Ceremony Program Orientation	Country Report Presentation (1)
	28	Mon	Country Report Presentation (2)	Research Paper Guidance (1)
Nov	11	Mon	Japanese Tax System (1)	Japanese Tax System (2)
	18	Mon	Japanese Tax System (3)	Japanese Tax Administration
	25	Mon	Taxpayer Service	【Study Visit】 Call Center (Tax Enquiries)
Dec	2	Mon	10:00-12:00 Verification (1)	Research Paper Guidance (2)
	9	Mon	10:00-12:00 Verification (2)	【Study Visit】 Tax Education Room
	16	Mon	10:00-12:00 Verification (3)	【Study Visit】 Regional Taxation Bureau
	23	Mon	Tax Debt Collection	Spare
Jan-25	20	Mon	Human Resource Management	【Study Visit】 Japan Federation of CPTAs' Associations
	27	Mon	Research Paper Guidance (3)	【Study Visit】 Call Center (Tax Debt Collection)
Feb	3	Mon	International Taxation (1)	【Study Visit】 Local Tax Authority
	10	Mon	International Taxation (2)	International Taxation (3)
	17	Mon	Research Paper Guidance (4) 【Progress Report】	Research Paper Guidance (5) 【Progress Report】
Mar	3	Mon	Tax Treaty (Intensive Lecture) (1)	Tax Treaty (Intensive Lecture) (2)
	4	Tue	Tax Treaty (Intensive Lecture) (3)	Tax Treaty (Intensive Lecture) (4)
	6	Thu	Tax Treaty (Intensive Lecture) (5)	Tax Treaty (Intensive Lecture) (6)
	7	Fri	Tax Treaty (Intensive Lecture) (7)	Tax Treaty (Intensive Lecture) (8)
	10	Mon	Tax Treaty (Intensive Lecture) (9)	Tax Treaty (Intensive Lecture) (10)
	17	Mon	Staff Training	【Study Visit】 National Tax College Wako Campus
	24	Mon	ICT System	Research Paper Guidance (6)
	31	Mon	Tax Treaty (Practice Negotiation) (1)	Tax Treaty (Practice Negotiation) (2)
Apr	7	Mon	Tax Treaty (Practice Negotiation) (3)	Tax Treaty (Practice Negotiation) (4)
	14	Mon	Research Paper Presentation (1)	Research Paper Presentation (2)
	15	Tue	Research Paper Presentation (3)	Research Paper Presentation (4)
	21	Mon	10:00-12:00 Evaluation Meeting	
Jun	9	Mon		Closing Ceremony Reception

[Note] The Schedule is subject to change.
NTA : National Tax Agency
NTC : National Tax College

Academic Calendar for 2025-2026

Term	Month	SUN	MON	TUE	WED	THU	FRI	SAT	Note
Fall	OCTOBER				1	2	3	4	Oct. 2 - 3 Entrance Guidance and Orientation
		5	6	7	8	9	10	11	Oct. 2 - 17 Registration for Fall Term & Fall (Session I)
		12	13	14	15	16	17	18	Oct. 6 Classes for Fall Term & Fall (Session I) begin
		19	20	21	22	23	24	25	Oct. 18 - 24 Withdrawal for Fall Term & Fall (Session I)
		26	27	28	29	30	31	1	Oct. 27 Grade release (SummerTerm)
	NOVEMBER	2	3	4	5	6	7	8	
		9	10	11	12	13	14	15	
		16	17	18	19	20	21	22	
		23	24	25	26	27	28	29	
	DECEMBER	30	1	2	3	4	5	6	Dec.2 - 15 Registration for Fall (Session II)
		7	8	9	10	11	12	13	Dec. 2 Classes for Fall (Session II) begin
		14	15	16	17	18	19	20	Dec. 16 - 19 Withdrawal for Fall (Session II)
		21	22	23	24	25	26	27	
	JANUARY	28	29	30	31	1	2	3	Dec. 29 - Jan. 3 New Year holidays
		4	5	6	7	8	9	10	
11		12	13	14	15	16	17		
18		19	20	21	22	23	24	[*Interterm Period: Jan. 29 - 31]	
	25	26	27	28	*29	*30	*31	Jan. 30 - Feb. 13 Registration for Winter Term	
Winter	FEBRUARY	1	2	3	4	5	6	7	Feb. 2 Classes for Winter Term begin
		8	9	10	11	12	13	14	
		15	16	17	18	19	20	21	
		22	23	24	25	26	27	28	Feb. 26 Grade release (Fall & Winter Term)
	MARCH	1	2	3	4	5	6	7	
		8	9	10	11	12	13	14	
		15	16	17	18	19	20	21	Mar. 19 Graduation Ceremony for domestic programs
		22	23	24	25	26	27	28	
		29	30	*31	*1	2	3	4	[*Interterm Period: Mar.31- April 1]
	Spring	APRIL	5	6	7	8	9	10	11
12			13	14	15	16	17	18	Apr. 2 - 15 Registration for Spring Term & Spring (Session I)
19			20	21	22	23	24	25	Apr. 6 Classes for Spring Term & Spring (Session I) begin
26			27	28	29	30	1	2	Apr. 16 - 22 Withdrawal for Spring Term & Spring (Session I)
MAY		3	4	5	6	7	8	9	Apr. 24 Grade release (Winter Term)
		10	11	12	13	14	15	16	
		17	18	19	20	21	22	23	
		24	25	26	27	28	29	30	
		31	1	2	3	4	5	6	Jun. 2 - 11 Registration for Spring (Session II)
JUNE		7	8	9	10	11	12	13	Jun. 4 Classes for Spring (Session II) begin
		14	15	16	17	18	19	20	Jun. 12 - 16 Withdrawal for Spring (Session II)
		21	22	23	24	25	26	27	
		28	29	30	1	2	3	4	
JULY		5	6	7	8	9	10	11	
		12	13	14	15	16	17	18	
	19	20	21	22	23	24	25		
	26	27	28	29	*30	*31	*1	[*Interterm Period: Jul. 30 - Aug. 1]	
Summer	AUGUST	2	3	4	5	6	7	8	July. 31 - Aug. 13 Registration for Summer Term
		9	10	11	12	13	14	15	Aug. 3 Classes for Summer Term begin
		16	17	18	19	20	21	22	
		23	24	25	26	27	28	29	Aug. 27 Grade release (Spring & Summer Terms)
		30	31	1	2	3	4	5	
	SEPTEMBER	6	7	8	9	10	11	12	Sep. 11 Graduation Ceremony
		13	14	15	16	17	18	19	
		20	21	22	23	24	25	26	
		27	28	29	30				

Course Registration (Please note that schedules are subject to change.)

Registration
 Withdrawal
 No class (Sundays, National Holidays, and New Year Holidays)

2 About GRIPS

Message from the Dean

GRIPS was founded in 1997 as a stand-alone national graduate university focusing on policy studies. Future policy leaders and policy researchers from around the world gather here, making GRIPS an international hub for public policy research and education.

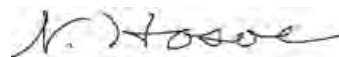
We offer Master's and Doctoral programs covering a broad range of areas, from economics, political science, public administration, and international relations to social engineering and mathematical science, and we encourage students and faculty to engage in interdisciplinary research.

GRIPS has a very international character in every respect, with more than two thirds of our students coming from overseas, from over 110 nations to date. Our faculty is also international and includes academics, public officials, and executives from private companies. The diverse backgrounds of our faculty create an ideal environment for students pursuing policy studies.

Reflecting the diverse backgrounds of our students and faculty, GRIPS aspires for cross-fertilization of academic disciplines and their application to real policy making and policy analysis. We welcome young people from all over the world to come to GRIPS to learn more about Japan and to engage in productive communication with each other. GRIPS' mission is to train and educate young, talented people to become national leaders with a genuine sense of social responsibility.

The Public Finance Program is an integral part of this mission. I hope you will join us.

Dean and Vice President
Nobuhiro Hosoe



GRIPS at a glance

The educational mandate of GRIPS is to cultivate high-level policy professionals and researchers. Our degree programs are designed to train students to envision a wide range of solutions to various policy issues.

OUR MISSION	<ul style="list-style-type: none">● Cultivate future leaders in policymaking● Serve as an international center for policy research
STUDENT LIFE	<ul style="list-style-type: none">● Numerous scholarships available● Spacious campus located in the heart of Tokyo (Roppongi)● Modern & comfortable dormitories● Global community and network (about 60 countries)● Field trips and various cultural programs offered
ACADEMIC	<ul style="list-style-type: none">● 1- and 2-year master's programs● Integrated 5-year doctorate programs● Various doctorate programs● Distinguished faculty● Classes taught fully in English
FUTURE CAREERS	<ul style="list-style-type: none">● Policy-making career tracks (government official, private sector, international organizations, academia, etc.)● Active alumni for international networking

Programs offered at GRIPS for international students

For details, visit: http://www.grips.ac.jp/en/education/inter_programs/

Brief History of GRIPS

1977 Graduate School of Policy Science (GSPS) established at Saitama University; the predecessor of GRIPS

1997 National Graduate Institute for Policy Studies (GRIPS) established

1999 Relocated to Wakamatsu-cho campus in Tokyo (Shinjuku)

2005 Relocated to current campus in Roppongi



3 Student Support

One unique aspect of GRIPS is our extensive support system for assisting students in their daily living. We consider this aspect of your lives to be every bit as important as your academic life, especially for foreign scholars unfamiliar with Japan. As international students have comprised, on average, about 60% of the GRIPS student body over the last 20 years, we have developed comprehensive services to assist students in their day-to-day living.

The Student Office organizes orientation programs for incoming students and assists arriving international students in getting organized and settled in Japan. It also organizes a number of social events and activities, including field trips and concerts. The Student Office also functions as a hub to promote meaningful interaction and understanding between Japanese and foreign nationals.

Faculty

GRIPS boasts a nearly 200 member faculty from a variety of backgrounds. Many of them hold doctorate degree from outside of Japan, and many have served as central and local government officials, diplomats, bankers or business executives. This enables an effective combination of rigorous academic courses complemented by professional expertise and experience.

For more on our faculty members, please see <http://www.grips.ac.jp/en/about/directory/>

Accommodation

Accommodation is provided in the Tokyo International Exchange Center (TIEC), operated by the Japan Student Services Organization (JASSO), in GRIPS International House, or in private apartments recommended by the GRIPS Student Office.

TIEC Residence Halls

In the bayside area, built in 2001 by the Ministry of Education, Culture, Sports, Science and Technology (MEXT)
Room Types: Single, Couple, Family



GRIPS International House I

In Nakano, built in 2009
Room Types: Single, Couple



GRIPS International House II

In Nakano, built in 2009
Room Types: Single, Couple



Resources

Center for Professional Communication

The mission of the Center for Professional Communication is to support GRIPS students, faculty, and staff in developing effective professional communication skills and competencies needed to communicate productively in an environment of multiple stakeholders. To this end, we offer a range of instruction and support in fundamental areas of professional communication in English and Japanese, including policy paper writing, professional speaking, grant proposal writing, and digital communications. We also provide opportunities for cultural and academic exchanges through a self-access learning center, organize seminars and special events related to all aspects of professional communication, and prepare customized materials for students and staff on academic and professional writing and language learning.



Library

- Extensive collection of publications in the field of policy studies, collected from around the world
- Collection contains over 190,000 volumes, including reference books, statistical collections, working papers, and government documents
- Large collections of periodicals that include more than 12,000 journals, many of which are available online
- Well-trained staff are equipped to respond to research-related requests



Center for Data Science

CDS is conveniently located in room C505 on the 5th floor at the end of the corridor that opens onto lecture rooms A-H. The main missions of CDS are: (1) To provide follow-up on data science-related classes; (2) To provide consultations for students and researchers who use data science in their research; (3) To provide training sessions in the use of software for data science, including R language and Stata, and in the mathematics necessary for a sufficiently deep understanding of the theoretical aspects of data science; (4) To promote joint research relating to data science within and outside GRIPS; and to hold related symposiums; and (5) To develop GRIPS's data archives.



Facilities

Student Rooms

Each student is provided with a study space, accessible 24 hours a day



IT Support Center

A computer help desk is open to all students during regular working hours



Health Services Center

- In-house health clinic
- Nurse on duty daily, doctor available several days a week
- Provides medical advice, basic medical examinations
- Will refer to an appropriate hospital or specialist when necessary



Gym

- Running machines and training equipment
- Showers and washing machines
- Free use by students, faculty, and staff



Photo : Masao Nishikawa.

Tea Ceremony room

Prayer room

4 Admissions

In 1987, the World Bank, in collaboration with the government of Japan, launched the Joint Japan/World Bank Graduate Scholarship Program, which is currently referred to as JJ/WBGSP. The Tax Course within the GRIPS Public Finance Program has received support from this program and has been recognized as a Participating Program of JJ/WBGSP ever since. Annually, the program grants scholarships to individuals from eligible developing countries, enabling them to pursue graduate studies at GRIPS. Additionally, the program may consider applicants who have secured alternative funding sources, such as scholarships provided by their home countries.

Eligibility Criteria

Before you apply for GRIPS, please carefully read the full description of eligibility criteria on the Public Finance Program web page at http://www.grips.ac.jp/en/education/inter_programs/finance/. Details of the JJ/WBGSP scholarship are also available on that page.

Irrespective of the funding source, to be eligible for admission to the Public Finance Program (Tax Course), the applicant must meet the following criteria:

1. Have a bachelor's degree or its equivalent from a recognized, accredited university of the highest standard.
2. Be proficient in English (admission priority will be given to applicants who have a TOEFL iBT score of 79 or higher, or an IELTS Academic score of 6.0 or higher).
3. Be a full-time government tax official from a developing country.
4. Have at least three years of work experience prior to the application deadline in tax policy and administration and able to show that such work experience is related to development-related topics indicated by the World Bank.
5. Show promise of continuing his/her career in tax policy and administration.

For Those Seeking a JJ/WBGSP Scholarship

Those seeking a JJ/WBGSP scholarship must first apply for admission to GRIPS. GRIPS will make a short list of candidates and send it to the World Bank for the final selection.

The short listed-candidates will be required to submit online applications directly to the World Bank.

Additional Criteria for JJ/WBGSP Scholarship	Scholarship Coverage
<ul style="list-style-type: none">● Be a national of a JJ/WBGSP eligible country. The list of JJ/WBGSP eligible countries is updated annually, and can be found on the JJ/WBGSP website: https://www.worldbank.org/en/programs/scholarships/brief/countries-eligible-for-jjwbgs-scholarship● Have never before received any scholarship funding towards a graduate degree or its equivalent from sources funded by the government of Japan	<ul style="list-style-type: none">● Monthly stipend: JPY306,910● Admission fee and tuition● An economy-class air ticket from your home country to Japan upon enrollment at GRIPS and an economy-class air ticket from Japan to your home country upon completion of your studies at GRIPS● Travel allowance: USD500 equivalent upon arrival, USD500 equivalent upon completion of your study
For full description, please refer to the Public Finance Program web page at http://www.grips.ac.jp/en/education/inter_programs/finance/	

How to Apply

We accept applications for the Public Finance Program (Tax Course) online at the GRIPS website. For details, please refer to the Admissions web page at

<http://www.grips.ac.jp/en/admissions/index/>

JICA scholarship is also available. For details, please refer to the GRIPS website.

5 Alumni

One of the greatest resources and joys of studying at GRIPS is the diversity of the student community. The connections you make at GRIPS are a valuable part of your degree. The GRIPS Alumni Network will ensure they are lifetime bonds by keeping you in touch with fellow alumni and the school.

As a GRIPS graduate, you join an impressive network of around 6,060 alumni who are actively shaping future policies in more than 123 countries around the world. We offer a variety of ways to remain engaged with GRIPS and strengthen your ties with fellow alumni. These include alumni reunions, seminars, a searchable alumni directory and online networking opportunities utilizing social media such as Facebook and LinkedIn.

Alumni of the Public Finance Program (Tax Course)

Since its launch in 1997, one hundred and thirty eight (138) students have graduated from the Public Finance Program's Tax Course with a Master's degree. This year, eight students are expected to get a degree by the end of September 2025. All were mid-career tax officials when first admitted into the program. Upon graduating from GRIPS, all JJ/WBGSP scholars are expected to return to their home country to apply their enhanced knowledge and skills to help and accelerate the pace of economic and social development : As of September 2025, most of our graduates are still working in tax-related government agencies in their home countries.



Voices of the Alumni



Ahmad Faiz (Pakistan, 2021)

Position: Deputy Commissioner

Affiliation: Federal Board of Revenue, Ministry of Finance

Over the years, GRIPS has evolved into one of the premier institutes for policy studies. GRIPS boasts a strong alumni network, with members significantly contributing to the economic development of their respective countries.

The Public Finance Master's program at GRIPS offers a comprehensive blend of rigorous economics-oriented academic study and practical training at the National Tax Agency. Specially designed for tax officials, the program enhances participants' view of tax policy as a tool for economic growth, beyond mere revenue generation. The practicum at the National Tax Agency provides participants with in-depth knowledge of the Japanese tax system and administration, while also facilitating the exchange of international best practices in tax policy and administration.

Living in Japan is a transformative experience that leaves participants with cherished memories and lasting connections. These connections extend beyond their time in Japan, fostering professional linkages and cross-country collaborations. I wish all prospective students good luck with their studies.



Muralidharapai Reghu (India, 2022)

Current Position: Joint Commissioner of Income Tax

Affiliation: Central Board of Direct Taxes, India

The Public Finance (Tax) Program has been a pivotal value-addition to my career. GRIPS provided a nourishing space for exploring and studying policy related subjects in line with my interest and aptitude. The highly qualified, experienced faculty have always been patient and supportive during my learning process. Further, in our program, the practicum with the National Tax Agency of Japan provided unique insights into the systems in place in Japan, and inculcated in us a useful understanding of best practices there.

The program has high credibility across the world; it has been a significant enhancement of my professional career, and in particular has aided me in policy-related work.

I strongly recommend the program to any motivated civil servant serving in Tax Policy Verticals ; it offers students a deep exposure to the academic side of public finance as well as a practical understanding of Japanese tax administration.



Okky Cahyono Wibowo (Indonesia, 2019)

Position: Senior Income Tax Analyst

Affiliation: Directorate General of Tax, Ministry of Finance, Indonesia

I have been immensely impressed by the way the Public Finance program not only builds students' robust academic skills but also offers exceptional professional networking opportunities. The curriculum is meticulously designed to ensure that we gain a deep and comprehensive understanding of our subjects, while the faculty's dedication and expertise have been pivotal in fostering an environment of academic excellence. Moreover, GRIPS excels at bridging the gap between academic learning and professional growth. Through the practicum program, GRIPS and the NTA frequently hosted guest lectures, study visits, and networking events, providing us with invaluable insights and connections in our respective fields. Through these experiences, I not only gained critical academic knowledge but also established meaningful relationships with professionals and peers that will be beneficial throughout my career. GRIPS truly offers a holistic educational experience, preparing us to excel both academically and professionally.



Dong Vanndy (Cambodia, 2015)

Position: Deputy Director

Affiliation: Department of Tax Crime Investigation, General Department of Taxation

Besides the undisputed conveniences including the campus, staff and facilities, knowledge and skills and the interactions with other cohorts that I gained through the study at GRIPS and through Tax Practicum program at National Tax College have been the most valuable impact on my career.

The policy analysis experience that I gained through the creation of my policy paper equipped me with the tools, new ideas and insights that I need to address career challenges and to effectively contribute to Cambodia's tax system, particularly regarding the degree of enforcement measures that should be implemented in order to optimize tax revenue collection and taxpayer compliance. Furthermore, the understanding that I acquired of the Japanese tax administration, particularly tax crime investigation, and the visits to regional tax bureaus and district tax offices have enhanced my current career.

More generally, the undisputed convenience of GRIPS' location and its campus are impressive, but most importantly, it's the people and the convenience of Japan that make it one of the most attractive countries to live and study in.

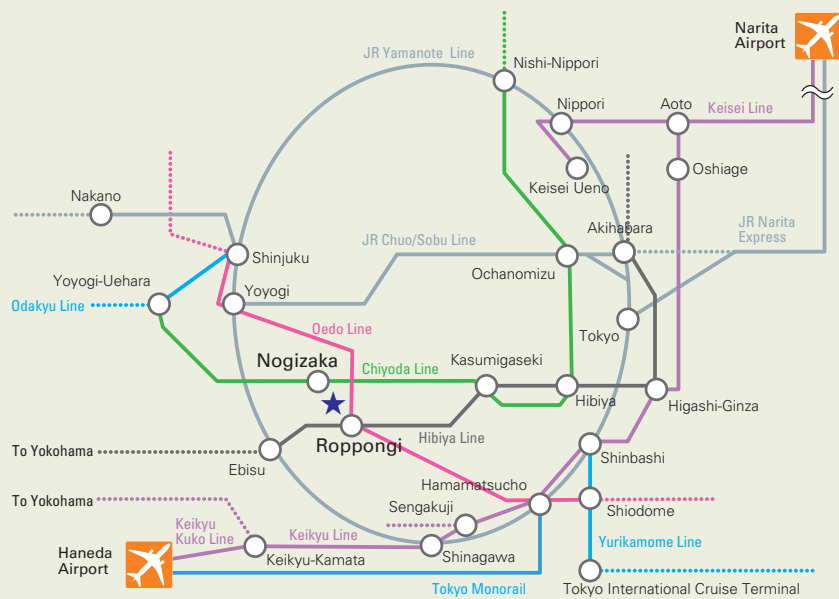
Address and Contact Information

Getting to GRIPS

The GRIPS building is located in the center of Tokyo, conveniently accessible by public transport. Both Nogizaka Station on the Chiyoda Line and Roppongi Station on the Oedo and Hibiya Lines are within 10 minutes walking distance.



Roppongi Hills



National Graduate Institute for Policy Studies

7-22-1 Roppongi, Minato-ku, Tokyo 106-8677 Japan

Tel: +81-(0)3-6439-6000 Fax: +81-(0)3-6439-6010

<http://www.grips.ac.jp>

Admissions Office

admissions@grips.ac.jp



Gateway to
Global Leadership