

# NATIONAL GRADUATE INSTITUTE FOR POLICY STUDIES

GRIPS 2023-2024



*Gateway to  
Global Leadership*

# Message from the President

The world is facing unprecedented challenges today, in areas including economic growth, national security, food, energy, human rights, and the environment. Given these circumstances, Japan, as an industrialized and democratic nation in the developing Indo-Pacific region, has a major role to play. There is an urgent need to generate spaces for serious dialogue and evidence-based policymaking. The National Graduate Institute for Policy Studies (GRIPS), as Japan's leading institute for policy studies and education, will serve as a space for such dialogues and deliberations.

GRIPS was established in 1997 as Japan's first institution for education in and research on policy studies. Ever since then, GRIPS has consistently carried out research and instruction relevant to the current affairs of Japan and the world. Over the years, we have developed programs and capabilities that would not be possible within the framework of a conventional university.

GRIPS has a rich international character that makes it truly global in outlook. We offer many programs in which degrees can be acquired entirely in English and our faculty and staff hail from countries around the world. International students, coming from more than 50 countries and regions each year, make up more than 60 percent of our student body, and our alumni network extends across more than 120 countries and regions. Our students come from diverse professional backgrounds, including government, international and non-profit organizations, academia, and the business community.

GRIPS provides a wide range of support services for students. For example, the Center for Professional Communication (CPC) offers a full suite of resources to enable students to improve their communication skills and master academic writing, and cultural programs to deepen the experience of living in Japan. Also, since 2022, the Center for Data Science has been providing students with the data-related knowledge and skills needed for research on and education in Evidence-Based Policy Making (EBPM).

GRIPS has Ph.D. and master's programs in a number of fields related to policy and economics. In the majority of GRIPS master's programs, students can earn a degree in one year. During that period of intensive study, they can acquire a wide range of knowledge and skills, particularly related to theory and policy analysis in economics, political science, public administration, data science, and systems engineering. A key theme is our interdisciplinary approach to policy issues, where we redefine problems beyond traditional boundaries so as to find solutions to cross-disciplinary challenges.

In 2020, we launched several two-year master's programs, primarily conducted in Japanese, enabling students to obtain master's degrees through evening and Saturday classes — the Global Leadership Development Program and the Science, Technology and Innovation Policy Program. GRIPS also actively provides non-degree training programs to various governmental and non-governmental organizations.

Moreover, we have been working to achieve the United Nations Sustainable Development Goals (SDGs) and to serve as a hub of collaboration among the university, government, and business communities.

We have met new policy challenges successfully over the past two-and-a-half decades and will continue to do so, also serving as a venue where faculty, staff, and students can work together with stakeholders outside the university to tackle the most pressing policy challenges of the 21st century.

Hiroko Ota  
President  
National Graduate Institute for Policy Studies



#### Profile

**Hiroko Ota**, president of the National Graduate Institute for Policy Studies (GRIPS), specializes in economic policy and public finance policy. She received her B.A. from Hitotsubashi University in Sociology in 1976. She was appointed associate professor at Saitama University in 1996, and continued in that position at GRIPS from 1997 until her appointment as professor in 2001. From 2004 to 2007 Ms. Ota served as director general of the cabinet office; as minister of state for economic and fiscal policy in the Abe cabinet; and as a member of the Fukuda cabinet. She returned to GRIPS in 2008 as professor of economics, then served as vice president from 2009 to 2011, and as senior professor from 2019 to 2022. She was appointed president of GRIPS in 2022.

# Contents

Message from the President.....	1
Goals and Features.....	3
Programs Outline .....	4
Admissions .....	5
Student Support and Alumni Network.....	6
Degree Programs .....	7
<b>Master's Programs</b>	
Young Leaders Program .....	8
One-year Master's Program of Public Policy (MP1).....	9
Two-year Master's Program of Public Policy (MP2).....	10
Macroeconomic Policy Program .....	11
Public Finance Program .....	12
Economics, Planning and Public Policy Program .....	13
Disaster Management Policy Program .....	14
Maritime Safety and Security Policy Program.....	15
<b>5-Year Ph.D. Program</b>	
Policy Analysis Program.....	16
<b>3-Year Ph.D. Programs</b>	
GRIPS Global Governance Program (G-cube) .....	17
Disaster Management Program.....	20
Science, Technology and Innovation Policy Program.....	21
Executive Development Center for Global Leadership .....	22
Center for Professional Communication.....	23
Center for Data Science .....	24
Research Activities / Library .....	25
GRIPS ALLIANCE .....	26
Facts and Figures .....	27
History of GRIPS.....	28
Access .....	29



The GRIPS logo design consists of three arcs, formed by six curved lines following a Japanese katana (sword) motif, slicing in toward the center and representing our mission to carve out the future based on historical experience. The arcs represent various independent ideas emerging and blending into a vibrant constellation, while the clear space in the center represents an infinite number of possibilities. The logo uses purple because of that color's association with intelligence and dignity.

# Goals and Features

## Goals

The National Graduate Institute for Policy Studies (GRIPS) aims to contribute to the betterment and advancement of democratic governance around the world through research and education on policy issues and innovative solutions.

### ■ Training of Policy Professionals and Researchers

The central goal of GRIPS is to cultivate future leaders with the ability to identify challenges in public policy and to offer diverse and innovative solutions. GRIPS works toward this goal by providing an opportunity for students to gain expert knowledge of and a creative perspective on policy planning.

### ■ Promotion of Interdisciplinary Policy Studies

Going beyond the students' specific fields, GRIPS fosters their ability to develop wide-ranging solutions to policy-related challenges and to take an interdisciplinary approach to the resolution of real issues.

### ■ Serving as an International Center for Policy Research

In order to offer world-class programs, GRIPS maintains innovativeness in both its research and its education systems, in an environment that meets international standards.

In addition to its leadership in establishing world-class policy studies and academic disciplines, GRIPS also maintains a platform for the provision of well-timed recommendations regarding current policy issues.

## Features

In order to achieve these goals, GRIPS offers exceptional research and training opportunities in a system characterized by the features listed below.

### ■ Focus on graduate-level education

The university is committed to providing graduate programs dedicated to policy studies.

### ■ Learning opportunities for professionals through a well-structured curriculum

Contemporary policy issues are addressed in the well-structured GRIPS curriculum for both domestic and international professionals (bachelor's and master's graduates) from government ministries and agencies, municipalities, government-affiliated agencies, and the private and research sectors.

### ■ Comprehensive programs offered completely in English

International students account for two thirds of total enrollment.

### ■ A wide range of financial support

Foreign students may apply for comprehensive scholarships offered with the support of international institutions such as the International Monetary Fund, the World Bank and the Asian Development Bank. There are other scholarships for which foreign/domestic students who aim to become researchers may apply. As well, a variety of in-school part-time employment opportunities are available.

### ■ Diverse instructional environment

GRIPS faculty include top-level researchers, administrators, and industry professionals with extensive expertise. GRIPS' tenure system and visiting faculty appointment program attract high-achieving public policy professionals from around the world and ensure a dynamic and diverse instructional environment.

### ■ Collaboration and partnership with other institutions

At GRIPS, government-academia collaboration in policy studies supports robust interaction between GRIPS and international organizations; the policy research bodies of Japanese government ministries and agencies; and Japanese municipalities.

# Programs Outline

**Teaching methods:** Lecture, seminar, and tutorial

**Assessment:** Written examinations and term papers

**Terms:** 4-term calendar (16-week Fall Term, 8-week Winter Term, 16-week Spring Term, 8-week Summer Term)

**Extracurricular:** Japanese language classes are provided for international students who wish to study Japanese during their time at GRIPS

The educational mandate of GRIPS is to cultivate high-level policy professionals and researchers. Our degree programs are designed to train students to envision a wide range of solutions to various policy issues.

GRIPS currently offers 12 master's programs (8 of which are taught in English), 1 integrated 5-year master's and doctorate program, and 4 doctoral programs (3 of which are taught in English). Our degree programs combine broad disciplinary curricula with an applied research focus and foster a commitment to international, national, and regional policy issues. This multifaceted approach provides the basis for a comprehensive understanding of economic development and socio-political change. We update our courses and develop new ones on the basis of ongoing policy research and changing policy issues. The programs at GRIPS are demanding and require a high level of commitment from students.

## Master's Programs —International Programs

- Young Leaders Program
- One-year Master's Program of Public Policy (MP1)
- Two-year Master's Program of Public Policy (MP2)
- Macroeconomic Policy Program
- Public Finance Program
- Economics, Planning and Public Policy Program
- Disaster Management Policy Program
- Maritime Safety and Security Policy Program

## 5-Year Ph.D. Program

- Policy Analysis Program

## 3-Year Ph.D. Programs

- GRIPS Global Governance Program (G-cube)
- Disaster Management Program
- Science, Technology and Innovation Policy Program

## Number of Students per Program

(as of May 2023)

Program		Current Students	Graduated Students
Master's	Young Leaders Program	31	524
	One-year Master's Program of Public Policy (MP1)	24	675
	Two-year Master's Program of Public Policy (MP2)	23	93
	Macroeconomic Policy Program	20	411
	Public Finance Program	18	329
	Economics, Planning and Public Policy Program	0	292
	Disaster Management Policy Program	27	503
	Maritime Safety and Security Policy Program	7	52
	Graduate Program in Japanese Language and Culture	-	112
	International Development Studies Program	-	314
5-Year Ph.D.	[MA] GRIPS Global Governance Program (G-cube)	0	30
	[Ph.D.] GRIPS Global Governance Program (G-cube)	43	28
	[MA] Policy Analysis Program	6	73
	[Ph.D.] Policy Analysis Program	24	86
3-Year Ph.D.	Public Policy Program	0	64
	Security and International Studies Program	6	20
	State Building and Economic Development Program	5	9
	Disaster Management Program	9	15
	Science, Technology and Innovation Policy Program	21	19
	Graduate Program in Japanese Language and Culture	-	10

This table does not list students in programs conducted in Japanese, except those in the Graduate Program in Japanese Language and Culture.



# Admissions

## Admissions

Admission is competitive and involves careful, holistic consideration of each candidate through both document screening and interviews.

## Scholarships

Full scholarships are available for exceptionally qualified candidates who have been accepted for study at GRIPS. These scholarships are provided by the Japanese government (MEXT) and international organizations, as well as by GRIPS.

## Tuition & Fees

Application Fee	JPY 30,000
Admission Fee	JPY 282,000
Tuition (per year)	JPY 642,960

Scholarship	Eligible Programs
Japanese Government - YLP-MEXT Scholarship	Young Leaders Program
Japanese Government (MEXT) Scholarship	One-year Master's Program of Public Policy (MP1) Two-year Master's Program of Public Policy (MP2) Policy Analysis Program GRIPS Global Governance Program (G-cube) Science, Technology and Innovation Policy Program
Asian Development Bank-Japan Scholarship Program (ADB-JSP)	One-year Master's Program of Public Policy (MP1) Two-year Master's Program of Public Policy (MP2)
Japan-IMF Scholarship Program for Asia (JISPA)	Macroeconomic Policy Program
Joint Japan/World Bank Graduate Scholarship Program (JJ/WBGSP)	Public Finance Program (Tax Course)
Japan-WCO Human Resource Development Programme (Scholarship Programme)	Public Finance Program (Customs Course)
JICA (including JDS scholarships)	One-year Master's Program of Public Policy (MP1) Two-year Master's Program of Public Policy (MP2) Policy Analysis Program GRIPS Global Governance Program (G-cube) Science, Technology and Innovation Policy Program Disaster Management Program
JICA/Building Research Institute (BRI)	Disaster Management Policy Program (Seismology, Earthquake Engineering and Tsunami Disaster Mitigation Course)
JICA/Public Works Research Institute (PWRI)	Disaster Management Policy Program (Water-related Disaster Management Course)
JICA	Maritime Safety and Security Policy Program

## Contact

### Admissions Office

Please visit our website for full details and the latest information.

<https://www.grips.ac.jp/en/admissions/index/>

Email: [admissions@grips.ac.jp](mailto:admissions@grips.ac.jp)

# Student Support and Alumni Network

## Student Support

We understand the challenges international students face when adjusting to a new culture and environment. Accordingly, the Student Office provides substantial assistance to international students so that you can focus on accomplishing your academic goals at GRIPS. The Student Office assists with a variety of matters such as accommodation arrangements, immigration procedures, and international cultural exchanges. International students will be assigned to off-campus accommodations in the Tokyo metropolitan area based on their requests. At GRIPS, the Health Services Center provides medical and psychological counseling services to all students.

## Alumni Network

One of the greatest resources and joys of studying at GRIPS is the diversity of the student community. The connections you make at GRIPS are a valuable part of your degree. The GRIPS Alumni Network will ensure they are lifetime bonds by keeping you in touch with fellow alumni and the school.

As a GRIPS graduate, you join an impressive network of well over 5,900 alumni who are actively shaping future policies in 121 countries around the world. Connectivity and communication sit at the heart of the alumni community. We offer a variety of ways to remain engaged with GRIPS and strengthen your ties with fellow alumni around the globe. These include alumni reunions, seminars, a searchable alumni directory and online networking opportunities utilizing social media such as Facebook and LinkedIn.

The Alumnus of the Month (ALMO) feature aims to celebrate some of our outstanding Alumni, while giving past, present, and future students an opportunity to meet some of our graduates. Please check out the ALMO feature on our website.

<https://www.grips.ac.jp/en/alumni/almo/>

Alumni: Atty. Ryan L. Estevez, Philippines; Young Leaders Program, 2011  
Undersecretary Presidential Legislative Liaison Office

“When I was accepted as a YLP scholar back in 2010, my life changed, not only because I was able to add a very colorful feather to my education, but also because I was deeply influenced by the Japanese system of education's purpose - that is, the development of character – the nurturing of the “kokoro” - which has become a very visible brand of my very public service, all thanks to my Japanese alma mater - GRIPS!”



Alumni: Ruamporn Prawatmuang, Thailand; Macroeconomic Policy Program, 2017  
Senior analyst, Enterprise Risk Management Department, Bank of Thailand.

“Studying at GRIPS was a totally life-changing experience for me. I studied not only the breadth and depth of economics, but also learned about various perceptions in a multicultural environment. It has broadened my horizons and helped me to develop both hard and soft skills. It is one of the highlights in my life. True to say, all these experiences have been beyond my expectations and truly support my career path to be a leader in the future”



# Degree Programs

## Master's Programs

Young Leaders Program

One-year Master's Program of Public Policy (MP1)

Two-year Master's Program of Public Policy (MP2)

Macroeconomic Policy Program

Public Finance Program

Economics, Planning and Public Policy Program

Disaster Management Policy Program

Maritime Safety and Security Policy Program

## Ph.D Programs

5-Year Ph.D. Program

Policy Analysis Program

3-Year Ph.D. Programs

GRIPS Global Governance Program (G-cube)

Disaster Management Program

Science, Technology and Innovation Policy Program

The sustainable development goals (SDGs) related to each degree program are shown on each page.

### 17 GOALS TO TRANSFORM OUR WORLD



Please visit the dedicated website, Knowledge and Research: GRIPS' contribution to the SDGs, to see the connections between our research and education activities and the SDGs.  
<https://www.grips.ac.jp/sdgs/en/>

# Young Leaders Program

School of Government, School of Local Governance

Master's Program

**Degrees Offered** ..... Master of Public Administration, Master of Public Policy

**Language of Instruction** ..... English

**Time Schedule** ..... Program duration: 1 year Enrollment: October Graduation: September

Related SDGs

**Website** [https://www.grips.ac.jp/en/education/inter\\_programs/leader/](https://www.grips.ac.jp/en/education/inter_programs/leader/)

1 2 3 4 5 6 7 8 9 10 11 12 13 14 15 16 17



**Hirofumi Takada**  
Director  
Professor



**Mikitaka Masuyama**  
Deputy Director,  
School of Government  
Professor



**Tsuyoshi Yoshimuta**  
Associate Director  
Professor

## Fosters future national leaders in countries in Asia and other regions

Young Leaders Program (YLP) was introduced by the Japanese Ministry of Education, Culture, Sports, Science and Technology in 2001. The objectives of the program are to

1. Foster future national leaders in designated countries
2. Build up comprehensive human networks among the leaders of nations
3. Establish friendly relationships among the countries involved, including Japan
4. Improve the quality of policy making in the participating countries

applicant's home country is a prerequisite for admission to the program.

Students will be admitted on the basis of an appraisal of their potential to become future leaders at home, to play important roles in their countries' development, and to maintain the lasting friendship and trust of Japan and other countries around the world.

### » PROGRAM DESIGN

The curriculum covers a wide range of topics concerning public administration and policy formulation, and also offers the opportunity for intensive discussion with politicians, highlevel government officials, corporate directors, journalists, and other Japanese leaders. The program also includes Field Trip/ Workshop and a final paper based on Independent Study.

### » TARGET GROUP

This program is open to exceptionally promising young government officials with considerable working experience in the area of public administration. In principle, a minimum of three years' working experience in the field in the

Curriculum: School of Government	
Category	Course Name
Required Courses	• The World and the SDGs • Introduction to Japan • Colloquium • Independent Study • Tutorial • Field Trip
Recommended Courses	• Microeconomics I • Essential Microeconomics • Contemporary Japanese Economy • Japanese Economy • Economic Development of Japan • Government and Politics in Japan • International Relations • International Political Economy • International Security Studies • Comparative Politics • Structure and Process of Government • Leadership and Knowledge Creation • GRIPS Forum I • GRIPS Forum II
Elective Courses	• Macroeconomics I • Government and Market • Data Science for Public Policy • International Trade • Development Economics • Japanese Foreign Policy • Human Resources Management • Social Security System in Japan • Introduction to Data Science • Data Science in Practice • Local Government System and Finance • Local Governance in the Changing World
Curriculum: School of Local Governance	
Category	Course Name
Required Courses	• The World and the SDGs • Local Government System and Finance • Local Governance in the Changing World • Introduction to Japan • Colloquium • Independent Study • Tutorial • Workshop
Recommended Courses	• Microeconomics I • Essential Microeconomics • Economic Development of Japan • Government and Politics in Japan • International Relations • Structure and Process of Government • Leadership and Knowledge Creation • GRIPS Forum I • GRIPS Forum II
Elective Courses	• Macroeconomics I • Government and Market • International Trade • Data Science for Public Policy • Development Economics • East Asian Economies • Japanese Foreign Policy • International Security Studies • Human Resources Management • Social Security System in Japan • Small and Medium Enterprise and Technology • Introduction to Data Science • Data Science in Practice

### » CAREER DESTINATIONS

Graduates from the YLP in principle return to their former governmental posts to become leaders in their respective organizations. To name a few:

#### School of Government

- Director, Youth Policies, Ministry of Youth and Sports (Bulgaria, 2018)
- Ambassador, Embassy of Lao PDR to Japan (Laos, 2008)
- Ambassador, Embassy of Malaysia to the Czech Republic (Malaysia, 2008)
- Ambassador, Embassy of Cambodia in Brunei Darussalam (Cambodia, 2007)

- Deputy Minister, Ministry of Finance (Kyrgyz Republic, 2007)
- Member of Board of Directors, ZIM Capital JSC (Kazakhstan, 2005)
- Director General, Employees' State Insurance Corporation (ESIC), Ministry of Labour & Employment (India, 2004)
- Ambassador, Embassy of the Philippines in Kingdom of Bahrain (Philippines, 2004)
- Deputy Secretary-General of ASEAN for ASEAN Political Security Community, Association of Southeast Asian Nations (ASEAN) (Indonesia, 2003)
- Secretary General, Office of Public Sector Development Commission (Thailand, 2002)

#### School of Local Governance

- Commissioner of Taxes, Government of Manipur (IAS) (India, 2014)
- Presidential Legislative Assistant for the House of Representatives (Undersecretary), Presidential Legislative Liaison Office, Office of the President of the Republic of the Philippines (Philippines, 2011)
- Director of Human Resource Management Unit, Rayong Governor Office, Rayong Province (Thailand, 2011)
- President, National School of Local Administration, Ministry of Interior (Cambodia, 2009)

**Degrees Offered**.....Master of Public Policy, Master of Public Administration

**Language of Instruction**.....English

**Time Schedule**.....Program duration: 1 year Enrollment: October Graduation: September

**Website** [https://www.grips.ac.jp/en/education/inter\\_programs/policy/](https://www.grips.ac.jp/en/education/inter_programs/policy/)

Related SDGs

1 2 3 4 5 7 8 9 10 11 12 16 17



**Makoto Tanaka**  
Director  
Professor



**Hozumi Morohosi**  
Associate Director  
Professor



**Hyoung-kyu Chey**  
Associate Director  
Professor

## Educates mid-career professionals in local or national governments and international organizations in the skills needed for policy analysis and policy management

The One-year Master's Program of Public Policy (MP1) equips mid-career managers and leaders with the fundamental skills and knowledge needed to be effective managers in the public sector. Students develop familiarity with all phases of the policy cycle. They are required to write a policy report as partial fulfillment of the degree of Master of Public Policy or Master of Public Administration.

### » TARGET GROUP

The primary target of MP1 consists of mid-career public officials with excellent academic and work credentials, commitment to public service, and with strong managerial and leadership potential. A secondary target consists of individuals with the capacity for and commitment to high-quality public policy research. Applications are invited from officials and staff of national and local governments, as well as other international and domestic organizations concerned with public policy analysis and management.

### » PROGRAM DESIGN

The curriculum is made up of an introductory course in policy studies, policy debate seminars and a wide-variety of elective courses. Students acquire more specialized knowledge by selecting courses in one of four concentration areas: Economic Policy, International Development Studies, International Relations, and Public Policy. A wide range of elective courses recommended by each concentration offers students the opportunity to broaden and/or deepen their knowledge. Practical courses are offered by government officials with extensive experience in actual policy formulation and implementation. This combination of academic and practical knowledge is the hallmark of a GRIPS education.

MP1 students produce a policy report in one of the four concentration areas. The Policy Debate Seminar I facilitates students' development and exchange of ideas for their policy reports in concentrations of their choice. In the Policy Debate Seminar II, students finalize their study and write up their policy reports with helps of their supervisors.

Curriculum	
Category	Course Name
Required Courses	• Tutorial I • The World and the SDGs • Policy Debate Seminar I – II
Elective Courses	<b>Economic Policy Concentration</b> • Microeconomics I – II • Macroeconomics I – II • Introduction to Applied Econometrics
	<b>International Development Studies Concentration</b> • Microeconomics I – II • Essential Microeconomics • Macroeconomics I – II • Essential Macroeconomics • Development Economics • Introduction to Applied Econometrics • Development Econometrics • Agricultural Development • Applied Econometrics Practice • Applied Econometrics
	<b>International Relations Concentration</b> • International Relations • International Political Economy • Japanese Foreign Policy • International Security Studies • Politics of Global Money and Finance • International Relations in Europe • Comparative Development Studies of Asia • Government and Politics in Japan • Comparative Politics • Comparative Political Economy • International Relations in East Asia • State and Politics in Southeast Asia • States, Regimes, and Institutions in Contemporary Africa • Comparative State Foundation • Analysis of Great Power Politics
	<b>Public Policy Concentration</b> • Government and Market • Introduction to Applied Econometrics • Trade and Industrial Development • Resource and Energy Economics • Development Economics • International Security Studies • Structure and Process of Government • Introduction to Quantitative Methods • Politics of Global Money and Finance • Quantitative Social Systems Analysis • Introduction to Data Science • Data Science in Practice • Outline of Energy Policy • Energy Data Analysis

### » CAREER DESTINATIONS

Graduates from MP1 are expected to hold executive positions in national or local government and international organizations, or to be researchers in public policy. To list a few of the graduates' career paths:

- Ministry of Agriculture (Afghanistan)
- Parliament Secretariat (Bangladesh)
- Jahangirnagar University; Jagannath University (Bangladesh)
- Ministry of Education (Bhutan)
- National Council of Bhutan (Bhutan)
- Administration of the Council of Ministers (Bulgaria)
- National Institute of Statistics (Cambodia)

- Statistical Service (Ghana)
- Ministry of National Development (Hungary)
- National Development Planning Board (Indonesia)
- Japan International Cooperatin Agency (Japan)
- Hazama Ando Corporation (Japan)
- Agency on Statistics (Kazakhstan)
- National Bank of the Kyrgyz Republic (Kyrgyz Republic)
- National Planning Commission Secretariat (Nepal)
- Embassy of Japan in Nigeria (Nigeria)
- Ministry of Commerce; Government of Khyber Pakhtunkhwa; Government of the Punjab (Pakistan)
- Department of Finance; Bangko Sentral ng Pilipinas (Philippines)
- Department of Energy (Philippines)

- Department of Justice; City Government of Davao; Cebu City Government (Philippines)
- Ministry of Culture, Community and Youth (MCCY) (Singapore)
- Ministry of Trade & Industry (Singapore)
- Ministry of Finance and Planning (Tanzania)
- Central Bank of Thailand (Thailand)
- Ministry of Family and Social Policy (Turkey)
- Central Bank of Uganda (Uganda)
- Ministry of Finance (Viet Nam)

# Two-year Master's Program of Public Policy (MP2)

Master's Program

**Degrees Offered** ..... Master of Arts in Public Policy

**Language of Instruction** ..... English

**Time Schedule** ..... Program duration: 2 year Enrollment: October Graduation: September

Related SDGs

**Website** [https://www.grips.ac.jp/en/education/inter\\_programs/policy2/](https://www.grips.ac.jp/en/education/inter_programs/policy2/)

1 2 3 4 5 7 8 9 10 11 12 16 17



**Makoto Tanaka**  
Director  
Professor

**Educates pre- and early-career professionals in local or national governments, international organizations and policy institutes in the technical skills needed to be professional policy analysts**

The Two-year Master's Program of Public Policy (MP2) provides early and mid-career professionals and staff members with the technical skills needed to be professional policy analysts.

The program provides a strong platform for advanced research (including doctoral studies). Students are required to write a master's thesis as partial fulfillment of the degree of Master of Arts in Public Policy.

## » TARGET GROUP

MP2 targets early and mid-career public policy professionals with demonstrated capacity for advanced policy analysis, commitment to public service, and the potential for leadership roles in policy analysis and program management.

Applications are invited from officials and staff of national and local governments, as well as universities, think tanks, and other international and domestic organizations concerned with policy analysis and management.

## » PROGRAM DESIGN

The program for MP2 has a similar structure to that of the one year program (MP1), but MP2 students receive more advanced training and guidance in the technical and practical skills needed for public policy analysis. In the first year, MP2 students complete a series of required and elective courses. All MP2 students develop a common interdisciplinary and analytical foundation through the required courses, take specialized courses that provide them with strong analytical and quantitative skills, and select from a wide-variety of elective courses. In their second year, students further develop their research skills and utilize them in writing and defending a master's thesis.



**Hozumi Morohosi**  
Associate Director  
Professor



**Hyoung-kyu Chey**  
Associate Director  
Professor

Curriculum	
Category	Course Name
Required Courses	• Tutorial I – II • The World and the SDGs • Independent Study • Policy Debate Seminar I – II
Elective Courses	<b>Economic Policy Concentration</b> • Microeconomics I – II • Macroeconomics I – II • Introduction to Applied Econometrics
	<b>International Development Studies Concentration</b> • Microeconomics I – II • Essential Microeconomics • Macroeconomics I – II • Essential Macroeconomics • Development Economics • Introduction to Applied Econometrics • Applied Econometrics • Development Econometrics • Agricultural Development • Applied Econometrics Practice
	<b>International Relations Concentration</b> • International Relations • International Political Economy • Japanese Foreign Policy • International Security Studies • Politics of Global Money and Finance • International Relations in Europe • Comparative Development Studies of Asia • Government and Politics in Japan • Comparative Politics • Structure and Process of Government • Comparative Political Economy • International Relations in East Asia • State and Politics in Southeast Asia • States, Regimes, and Institutions in Contemporary Africa • Comparative State Foundation • Analysis of Great Power Politics
	<b>Public Policy Concentration</b> • Government and Market • Introduction to Applied Econometrics • Trade and Industrial Development • Resource and Energy Economics • Development Economics • International Security Studies • Structure and Process of Government • Introduction to Quantitative Methods • Politics of Global Money and Finance • Quantitative Social Systems Analysis • Introduction to Data Science • Data Science in Practice • Outline of Energy Policy • Energy Data Analysis

## » CAREER DESTINATIONS

Graduates from MP2 are expected to hold executive positions in national or local government and international organizations, or to be researchers in public policy. To list a few of the graduates' career paths:

- Ministry of Agriculture (Afghanistan)
- Ministry of Labour & Human Resources (Bhutan)
- National Institute of Statistics (Cambodia)
- Ministry of Foreign Affairs (Colombia)
- Statistical Service (Ghana)

- Ministry of Trade (Indonesia)
- Ministry of State Secretariat of the Republic of Indonesia (Indonesia)
- Kementerian Pekerjaan Umum; National Institute of Public Administration (NIPA) (Indonesia)
- The Board of Audit of Japan (Japan)
- National Bank of the Kyrgyz Republic (Kyrgyz Republic)
- Ministry of Science, Technology and Innovation (Malaysia)
- Ministry of Home Affairs (Nepal)
- Embassy of Japan (Nigeria)

- Ministry of Energy (Pakistan)
- Department of Finance (Philippines)
- Department of the Interior (Philippines)
- Ministry of Public Administration & Home Affairs (Sri Lanka)
- Ministry of Finance and Planning (Tanzania)
- Central Bank of Uganda; Ministry of Internal Affairs (Uganda)
- Central Bank of the Republic of Uzbekistan (Uzbekistan)

**Degrees Offered**.....Master of Public Policy/Master of Public Economics (One-year Program), Master of Arts in Public Economics (Two-year Program)

**Language of Instruction**.....English

**Time Schedule**.....Program duration: 1 year or 2 years Enrollment: October Graduation: September

Related SDGs

**Website** [https://www.grips.ac.jp/en/education/inter\\_programs/transition/](https://www.grips.ac.jp/en/education/inter_programs/transition/)

1 4 8 10



**Junichi Fujimoto**  
Director  
Professor



**Minchung Hsu**  
Associate Director  
Associate Professor

## To train policy makers and professionals using modern macroeconomic theory and policy

The Macroeconomic Policy Program (MEP) is a professionally oriented program designed to train modern macroeconomic policy makers and professionals who need to understand macroeconomic fluctuations and the roles of monetary and fiscal policies in domestic and global economies. The program aims to enhance the capacity of governments to formulate and implement financial and economic policies in a manner that leads to quality growth. The curriculum deals with macroeconomic and structural aspects, including policies aimed at establishing sound macroeconomic fundamentals, liberalized trade, a robust financial system, and a vast private sector. Ample attention is also given to a broader range of issues, such as roles for government, institution building, the environment and sustainable development.

MEP is a program developed from the successful tradition of the Transition Economy Program, which has been a partner of the Japan-IMF Scholarship Program for Asia (JISPA) since the inception of JISPA in 1993.

The Program is primarily aimed at government officials and professionals who are involved in designing and implementing macroeconomic policies.

### » PROGRAM DESIGN

Both one-year and two-year programs are offered. One-year program requires 34 credits for graduation and grants a Master of Public Policy or a Master of Public Economics; Two-year program requires 44 credits and grants a Master of Arts in Public Economics. Qualified candidates who have flexible working schedules, are willing to devote more time to thesis writing, and have a desire to develop more advanced analytical skills may consider the Two-year Program.

The coursework consists of required courses, recommended courses, and elective courses. The required courses, which include Macroeconomics, Microeconomics, and Econometrics, provide solid training in principles and develop practical analytical skills for designing and evaluating macroeconomic policies. The variety of recommended and elective courses gives students the chance to further advance their analytical and quantitative skills as well as to develop their specialization in specific areas of interests, such as monetary policy, fiscal policy, international trade, and financial markets. The writing of policy papers (One-year program) / theses (Two-year program) will be closely supervised by experienced core faculty members through seminar courses.

Curriculum: One-year Program		Curriculum: Two-year Program	
Category	Course Name	Category	Course Name
<b>Required Courses</b>	<ul style="list-style-type: none"> <li>The World and the SDGs</li> <li>Microeconomics I–II</li> <li>Macroeconomics I–II</li> <li>Introduction to Applied Econometrics</li> <li>International Finance</li> <li>Tutorial (MEP 1)</li> <li>Policy Paper Seminar I–II</li> </ul>	<b>Required Courses</b>	<ul style="list-style-type: none"> <li>The World and the SDGs</li> <li>Microeconomics I–II</li> <li>Macroeconomics I–II</li> <li>Introduction to Applied Econometrics</li> <li>International Finance</li> <li>Tutorial (MEP 2)</li> <li>Thesis Seminar I–III</li> </ul>
<b>Recommended Courses</b>	<ul style="list-style-type: none"> <li>Monetary Economics (Money and Banking)</li> <li>Economic Development of Southeast Asia</li> <li>Government and Market</li> <li>Finance and Economic Growth</li> <li>Applied Time Series Analysis for Macroeconomic</li> <li>Applied Econometrics</li> <li>Applied Econometrics Practice</li> <li>Data Science for Public Policy</li> <li>Trade and Industrial Development</li> <li>Mathematics for Economic Analysis</li> <li>Public Finance I</li> <li>Political Economy</li> <li>Fiscal Reform in Japan</li> <li>Economics of Tax Policy</li> <li>Reform of Economic Policy in Japan</li> <li>Economics of Law</li> <li>Competition and Regulatory Economics</li> <li>International Trade</li> <li>Empirics of Macroeconomic Policies and International Finance</li> <li>Theory and Practice of Central Banking</li> <li>Environmental Economics</li> <li>Resource and Energy Economics</li> <li>Contemporary Japanese Economy</li> <li>Japanese Economy</li> <li>Financial Economics</li> <li>Time Series Analysis</li> <li>Cost Benefit Analysis I</li> <li>Economic Modeling for Policy Simulations</li> <li>Development Economics</li> <li>Development History of Asia</li> <li>Economic History and Institution</li> <li>Computer Programming for Economics</li> <li>Modernization of Financial Sector</li> <li>Policy Design and Implementation in Developing Countries</li> <li>GRIPS Forum I–II</li> <li>Introduction to Data Science</li> <li>Data Science in Practice</li> <li>East Asian Economies</li> </ul>	<b>Recommended Courses</b>	<ul style="list-style-type: none"> <li>Monetary Economics (Money and Banking)</li> <li>Economic Development of Southeast Asia</li> <li>Government and Market</li> <li>Finance and Economic Growth</li> <li>Applied Time Series Analysis for Macroeconomic</li> <li>Applied Econometrics</li> <li>Applied Econometrics Practice</li> <li>Data Science for Public Policy</li> <li>Trade and Industrial Development</li> <li>Mathematics for Economic Analysis</li> <li>Public Finance I</li> <li>Political Economy</li> <li>Fiscal Reform in Japan</li> <li>Economics of Tax Policy</li> <li>Reform of Economic Policy in Japan</li> <li>Economics of Law</li> <li>Competition and Regulatory Economics</li> <li>International Trade</li> <li>Empirics of Macroeconomic Policies and International Finance</li> <li>Theory and Practice of Central Banking</li> <li>Environmental Economics</li> <li>Resource and Energy Economics</li> <li>Contemporary Japanese Economy</li> <li>Japanese Economy</li> <li>Financial Economics</li> <li>Time Series Analysis</li> <li>Cost Benefit Analysis I</li> <li>Economic Modeling for Policy Simulations</li> <li>Development Economics</li> <li>Development History of Asia</li> <li>Economic History and Institution</li> <li>Computer Programming for Economics</li> <li>Modernization of Financial Sector</li> <li>Policy Design and Implementation in Developing Countries</li> <li>GRIPS Forum I–II</li> <li>Introduction to Data Science</li> <li>Data Science in Practice</li> <li>East Asian Economies</li> </ul>
<b>Elective Courses</b>	<ul style="list-style-type: none"> <li>For qualified students only</li> <li>Advanced Microeconomics I–IV</li> <li>Advanced Macroeconomics I–IV</li> <li>Advanced Econometrics I–IV</li> </ul>	<b>Elective Courses</b>	<ul style="list-style-type: none"> <li>For qualified students only</li> <li>Advanced Microeconomics I–IV</li> <li>Advanced Macroeconomics I–IV</li> <li>Advanced Econometrics I–IV</li> </ul>

### » CAREER DESTINATIONS

Graduates from MEP are expected to hold key positions as policy makers in government agencies, or research institutes. Below are a few examples:

- Member of the Board of Directors, Chief Investment Officer, AIG Japan Holdings KK (Japan, 2012)
- Fiscal and Macroeconomic Research Consultant, Ministry of Finance and Treasury (Maldives 2011)
- Advisor to the Speaker, Parliament of Mongolia (Mongolia, 2006)
- Deputy Minister, Ministry of Economy of the Kyrgyz Republic (Kyrgyz Republic 2010)
- Director, Balance of Payments Statistics Division, State Administration of Foreign Exchange (China, 2003)
- Deputy Minister, Ministry of Finance (Uzbekistan, 2002)
- Deputy Governor, National Bank of Kazakhstan (Kazakhstan, 2001)
- Deputy Director General, Exchange Management Department, National Bank of Cambodia (Cambodia, 2000)
- Governor, State Bank of Vietnam (SBV) (Viet Nam, 1997)
- Deputy Governor, Bank of the Lao PDR (Laos, 1996)

# Public Finance Program

Master's Program

Tax course: Joint Japan / World Bank Graduate Scholarship Program

Customs course: Japan-WCO Human Resource Development Scholarship Programme

Degrees Offered .....Master of Public Finance

Language of Instruction .....English

Time Schedule .....Program duration: Customs course 13months, Tax course 12months Enrollment: Customs course September, Tax course October

Related SDGs

Website [https://www.grips.ac.jp/en/education/inter\\_programs/finance/](https://www.grips.ac.jp/en/education/inter_programs/finance/)

1 3 4 5 8 10



**Dainn Wie**  
Director  
Associate Professor



**Masako Kurosawa**  
Associate Director  
Professor

## Fosters the skills needed to be leaders in taxation and customs

The Public Finance Program (PF) is operated under the full support of the World Bank (WB) and the World Customs Organization (WCO). The major objective of the PF is to provide students with the conceptual understanding and technical competence to become leaders in taxation and customs. The program is comprised of two segments: an academic segment common to tax and customs scholars, and a practicum segment which is divided into tax and customs depending on the scholar's stream.

### » TARGET GROUP

Government officials from developing countries worldwide who are currently working in tax or customs administration or equivalent departments, with 2-3 years of work experience in the relevant field.

### » PROGRAM DESIGN

The academic segment of the program provides rigorous economics-oriented training aimed at developing an understanding of the theoretical, empirical, and institutional aspects of tax and customs policy implementation and administration in the context of developing countries' economic and social development. A practicum at the National Tax Agency or the Customs Training Institute provides an opportunity for students to enhance their learning with hands-on experience in a tax/customs-related work environment and to integrate this experience with their formal education.

Curriculum (subject to change)	
Category	Course Name
<b>Required Courses</b>	
<b>Tax Course</b>	• International Taxation of Japan • Practicum at the National Tax Agency
<b>Customs Course</b>	• Practicum in Customs Administration I – III • Intellectual Property Rights Enforcement at the Border
	• Microeconomics I • Public Finance I • Thesis Seminar • Tutorial (PF) • The World and the SDGs
<b>Elective Courses</b>	
<b>Highly Recommended</b>	• Macroeconomics I • Macroeconomics II • Government and Market • Introduction to Applied Econometrics
	• Fiscal Reform in Japan • Economics of Tax Policy • Reform of Economic Policy in Japan • International Trade
	• Development Economics • Human Resources Management • Customs Law
	• Monetary Economics (Money and Banking) • Applied Time Series Analysis for Macroeconomics
	• Mathematics for Economic Analysis • Economics of Law • Time Series Analysis • Political Economy
	• Public Expenditure Management • Macroeconomics II • Introduction to Data Science • Data Science in Practice
	• Finance and Economic Growth • Applied Econometrics • Applied Econometrics Practice
	• Development History of Asia: Policy, Market and Technology • Local Government System and Finance

### » CAREER DESTINATIONS

Graduates from PF are expected to return to their host organizations to become fiscal leaders in taxation and customs. Most of the graduates are still working at the tax and customs bureau in their home countries. To give a few examples of their current positions:

#### Tax Course

- Section Head for Supervision and Consultancy IV , Badung Selatan Pratama Tax Office, (Indonesia, 2001)
- Director General, Department of National Properties, Ministry of Finance (Bhutan, 2004)
- Director, Internal Revenue Department, Ministry of Finance (Myanmar, 2003)
- Commissioner, Inland Revenue, Federal Board of Revenue (Pakistan, 2007)
- Ag. Deputy Commissioner, Kenya Revenue Authority (Kenya, 2006)
- Director, Investigation, Inland Revenue Board (Malaysia, 2009)

- Joint Commissioner, Department of Revenue & Customs (Bhutan, 2011)
- Under-Secretary, Parliamentary Study and Research, Federal-Parliament Secretariat (Nepal, 2005)
- Assistant Director/Head RIU, Revenue Intelligence and Investigation Unit (RIIU), National Revenue Authority (Sierra Leone, 2013)

#### Customs Course

- Chief Revenue Officer, Customs Division, Ghana Revenue Authority (Ghana, 2007)
- Chief of Division Etudes et Developpement, Direction Informatique et Statistiques, Direction Generale Des Douanes (Guinea, 2008)
- Deputy Director, Department of strategic development and international cooperation, The State Fiscal Service of Ukraine (Ukraine, 2015)
- Deputy director of Risk Management Division, Mongolian Customs General Administration (Mongol, 2008)

- Director, Department of Revenue, Ministry of Finance (India, 2011)
- Director Revenue Management, Fiji Revenue and Customs Service (FRCS) (Fiji, 2007)
- Technical Attache, Capacity Building Directorate, World Customs Organization (Azerbaijan, 2009)
- Under Secretary, Inter Government Fiscal Management Division, Ministry of Finance (Nepal, 2006)
- Commissioner, Internal Resources Division, Large Taxpayers Unit, Value Added Tax, National Board of Revenue, Ministry of Finance (Bangladesh, 2010)
- Head of Trade Statistics Division, Information Technology and Statistics Department, General Department of Customs, Ministry of Finance of Vietnam (Viet Nam, 2003)

Degrees Offered.....Master of Public Policy issued by GRIPS, Master's degree issued by an Indonesian University  
Language of Instruction.....English  
Time Schedule.....Program duration: 1 year Enrollment: October Graduation: September

Related SDGs

Website [https://www.grips.ac.jp/en/education/inter\\_programs/economic/](https://www.grips.ac.jp/en/education/inter_programs/economic/)

1 3 4 6 7 8 9 10 17



Toshihiro Kudo  
Director  
Professor

Trains government officials to contribute to good governance and economic development in Indonesia

Indonesia is undergoing enormous transformation. The “two D’s”—robust democratization and radical decentralization—are fundamentally reshaping the country’s political, economic, and social landscape.

To help Indonesia meet the challenges arising from this transformation, the GRIPS-Indonesia Linkage Master’s Program (LMP) was launched in 2007, designed to develop highly capable central and local government officials who will contribute to Indonesia’s capacity to continue on the road to good governance and economic prosperity. This collaborative academic program is offered by GRIPS and Indonesia’s premier national universities.

» TARGET GROUP

Talented government officials from the central or regional government of Indonesia

» PROGRAM DESIGN

During the two-year program, with the first year in Indonesia and the second one at GRIPS, the students enjoy excellent opportunities to combine theory with practical skills and research with action. Special emphasis is placed on developing core skills in areas that will be valuable to them: economics, political science, public policy, and public management. The program’s approach is multidisciplinary and covers a wide range of topics, allowing the fellows to select the courses that suit their individual needs.

GRIPS offers a distinctive learning environment in which the LMP students have abundant opportunities to interact with and learn from a diverse international group of faculty members and their own peers—mid-career government officials from all over the world. In addition, the faculty’s vast network of contacts, along with the campus’ ideal location in the heart of metropolitan Tokyo, provides the students with uniquely easy access to the Japanese policymaking community.

Curriculum	
Category	Course Name
Required Courses	• Independent Study (Policy Paper) • The World and the SDGs
Recommended Courses	• Monetary Economics (Money and Banking) • Economic Development of Southeast Asia • Microeconomics II • Government and Market • Macroeconomics II • Introduction to Applied Econometrics • Global Development Agendas and Japan’s ODA • Poverty Alleviation • Strategy for Economic Development • Trade and Industrial Development • Local Public Finance • Reform of Economic Policy in Japan • Infrastructure and Regional Development: Lessons from the Past • International Trade • Resource and Energy Economics • Contemporary Japanese Economy • Japanese Economy • Development Economics • Agricultural Development • East Asian Economies • Social Policy and Development in ASEAN • Agricultural Economics • International Development Policy • Comparative Development Studies of Asia • Government and Politics in Japan • State and Politics in Southeast Asia • Structure and Process of Government • Politics of Global Money and Finance • Non-Traditional Security • Comparative Political Economy • Introduction to Quantitative Methods • Foreign Direct Investment • Human Resources Management • Public Expenditure Management • Social Security System in Japan • Small and Medium Enterprise and Technology • National Land Policy • Local Government Finance • Local Governance in the Changing World • Introduction to Data Science • Data Science in Practice

» CAREER DESTINATIONS

Graduates from EPP are dispatched from the Indonesian government, and are expected to return to their former organizations to become leaders in public policy.



# Disaster Management Policy Program

Master's Program

Seismology, Earthquake Engineering and Tsunami Disaster Mitigation Course, Water-related Disaster Management Course

**Degree Offered** ..... Master of Disaster Management

**Language of Instruction** ..... English

**Time Schedule** ..... Program duration: 1 year Enrollment: October Graduation: September

Related SDGs

**Website** [https://www.grips.ac.jp/en/education/inter\\_programs/disaster/](https://www.grips.ac.jp/en/education/inter_programs/disaster/)

9 11 17



**Koji Katayama**

Director

Professor



**Naohiko Hibino**

Associate Director

Professor

## Fostering disaster risk management experts in developing countries

Natural disasters result in crippling economic losses and human tragedy, hampering development, particularly in developing countries, where many people reside in buildings and areas that are vulnerable to natural disasters. In order to reduce the effects of natural disasters, human losses in particular, proactive disaster risk management should be promoted, preferably in a multi-disciplinary fashion. To that end, it is essential to cultivate, through professional education and training, disaster management experts with the expertise to develop and apply appropriate disaster management policies and techniques that harmonize with local conditions.

In order to enhance the capacity of professionals in developing countries to cope with natural disasters, the National Graduate Institute for Policy Studies (GRIPS) offers a master's degree program in Disaster Management Policy. This Program is offered jointly by the International Institute of Seismology and Earthquake Engineering (IISSE) of the Building Research Institute (BRI); the International Centre for Water Hazard and Risk Management (ICHARM) of the Public Works Research Institute (PWRI); and the Japan International Cooperation Agency (JICA). This program is administered as a JICA Knowledge Co-Creation Program, supported by Official Development Assistance from the Government of Japan.

### » TARGET GROUP

Technical officials, engineers, or researchers in the fields of earthquakes, tsunamis, water-related disasters, and disaster riskmanagement policy in developing countries.

### » PROGRAM DESIGN

This program is designed to give disaster risk management professionals from developing countries an opportunity to: study in one of the four courses, seismology, earthquake engineering, tsunami disaster mitigation, and water-related disasters; obtain a foundation of disaster risk management knowledge; study the theories which constitute the foundation of disaster management policy; study Japanese disaster management policy and systems; and acquire the ability to apply problem-solving approaches to the development of concrete technologies and policy appropriate to local conditions.

In addition to developing expertise in their areas of study, the students will obtain a bird's-eye view of the entire field of disaster management beyond the limits of their specializations; and will attend lectures, make presentations, and engage in discussions of the field of disaster management in order to deepen their understanding of other research areas. They will also have an opportunity to take part in group fieldwork in locations across Tokyo. This fieldwork brings together students with different specializations, from governments and organizations of a number of countries, for an innovative two-day exercise in which they give joint presentations with Japanese students from the Disaster Risk Management Concentration and the Infrastructure Policy Concentration.

Curriculum: Seismology, Earthquake Engineering and Tsunami Disaster Mitigation Course		Curriculum: Water-related Disaster Management Course	
Category	Course Name	Category	Course Name
Required Courses	<ul style="list-style-type: none"> <li>Individual Study</li> </ul>	Required Courses	<ul style="list-style-type: none"> <li>Individual Study</li> </ul>
Recommended Courses	<ul style="list-style-type: none"> <li>Disaster Management Policies A: from Regional and Infrastructure Aspect</li> <li>Disaster Management Policies B: from Urban and Community Aspect</li> <li>Earthquake Hazard Assessment A • Earthquake Risk Assessment</li> <li>Tsunami Hazard Assessment • Tsunami Countermeasures</li> <li>Earthquake Hazard Assessment B</li> </ul>	Recommended Courses	<ul style="list-style-type: none"> <li>Disaster Management Policies A: from Regional and Infrastructure Aspect</li> <li>Disaster Management Policies B: from Urban and Community Aspect</li> <li>Hydrology • Hydraulics</li> <li>Basic Concepts of Integrated Flood Risk Management (IFRM)</li> <li>Urban Flood Management and Flood Hazard Mapping</li> <li>Flood Hydraulics and River Channel Design</li> <li>Mechanics of Sediment Transportation and Channel Changes</li> <li>Control Measures for Landslide &amp; Debris Flow</li> <li>Socio-economic and Environmental Aspects of Sustainability-oriented Flood Management</li> </ul>
Elective Courses	<ul style="list-style-type: none"> <li>Earthquake Phenomenology • Characteristics of Earthquake Disasters</li> <li>Earthquake Circumstance</li> <li>Information Technology Related with Earthquakes and Disasters</li> <li>Structural Analysis • Ground Vibration and Structural Dynamics</li> <li>Seismic Structures • Seismic Evaluation and Seismic Design Code</li> <li>Theory of Tsunami</li> <li>Case Study (Practice for Earthquake Disaster - Recovery Management Policy I - III)</li> <li>Case Study (Practice for Tsunami Disaster Mitigation Policy)</li> </ul>	Elective Courses	<ul style="list-style-type: none"> <li>Computer Programming • Practice on Integrated Flood Analysis System (IFAS)</li> <li>Practice on GIS and Remote Sensing Technique</li> <li>Site Visit of Water-related Disaster Management Practice in Japan</li> <li>Practice on Open Channel Hydraulics</li> </ul>

### » ORIGIN AND AFFILIATION OF STUDENTS

\* Since 2005, we have had students and graduates from 67 countries/regions.

Below are the countries and affiliations of GRIPS students during the period 2018-2022.

**Bangladesh:** Bangladesh Water Development Board; Public Works Department; House and Building Research Institute; Bangladesh Meteorological Department; Ministry of Housing and Public Works

**Bhutan:** Ministry of Home and Cultural Affairs; Ministry of Agriculture and Forests; Ministry of Work and Human Settlement; Ministry of Economic Affairs; National Center for Hydrology and Meteorology

**Brazil:** Military Fire Brigade of Minas Gerais; CPRM-Companhia de Pesquisa de Recursos Minerais

**Chile:** Ministry of Public Works; Asociacion Chilena de Ingenieria de Puertos y Costas

**Colombia:** General Maritime Directorate

**Comoros:** National Center for Documentation and Scientific Research

**Costa Rica:** Volcanes sin Fronteras; Instituto Costarricense de Electricidad

**Ecuador:** Oceanographic Institute of the Armada de Ecuador

**Egypt:** National Research Institute of Astronomy and Geophysics

**El Salvador:** Ministry of Culture; JICA Technical Cooperation Team for GENSAI Project; Mayors Council and Planning Office of the Metropolitan Area of San Salvador; Ministry of Environment and Natural Resources; INGENYARSE S.A. de C.V.

**Fiji:** Mineral Resources Department; Ministry of Lands and Mineral Resources

**Ghana:** Ghana Geological Survey Authority

**India:** Indian National Centre for Ocean Information Services, MoES; National Institute of Hydrology

**Indonesia:** National Agency for Disaster Management; Ministry of Public Works and Housing; Meteorology, Climatological and Geophysical Agency

**Liberia:** National Disaster Management Agency

**Malawi:** Department of Disaster Management Affairs

**Malaysia:** Public Works Department of Malaysia

**Mauritius:** Land Drainage Authority

**Mongolia:** Institute of Astronomy and Geophysics, Mongolian Academy of Science

**Myanmar:** Ministry of Transport and Communication; Ministry of Agriculture, Livestock and Irrigation; Directorate of Water Resources and Improvement of River Systems

**Nepal:** Ministry of Energy; Ministry of Urban Development; Bharatpur Metropolitan City; Ministry of Physical Infrastructure and Transport; Department of Water Resources and Irrigation

**Pakistan:** Pakistan Meteorological Department; Water and Power

Development Authority; Gilgit Baltistan Public Works Department

**Peru:** Japan-Peru Center for Earthquake Engineering Research and Disaster Mitigation

**Philippines:** Department of Public Works and Highways; Philippine Institute of Volcanology and Seismology; Philippine Atmospheric, Geophysical and Astronomical Services Administration; Batangas State University; Dept. of the Interior and Local Government; Municipal Government of Manbusao, Capiz

**Solomon:** Ministry of Mines, Energy and Rural Electrification

**Sri Lanka:** Sri Lanka Land Development Corporation; Irrigation Department; Eastern Province

**Timor-Leste:** Ministry of Public Works; Institute of Petroleum and Geology

**Tonga:** Ministry of Land and Natural Resources; Ministry of Infrastructure

**Tunisia:** Ministry of Equipment and Housing

**Degree Offered** .....Master of Policy Studies

**Language of Instruction** .....English

**Time Schedule** .....Program duration: 1 year Enrollment: October Graduation: September

Related SDGs

**Website** [https://www.grips.ac.jp/en/education/inter\\_programs/maritime/](https://www.grips.ac.jp/en/education/inter_programs/maritime/)

14 16 17



**Yusuke Takagi**  
Director  
Associate Professor

**This program offers the opportunity to acquire advanced knowledge and analytical and communication skills relevant to their work and to become members of a network of future coast guard leaders in the Indo-Pacific**

The Maritime Safety and Security Policy Program (MSP) is a joint program designed and administered by GRIPS and the Japan Coast Guard (JCG). MSP offers the students learning opportunities based on the resources of both institutions in the fields of public policy, security studies, and maritime safety and security. The students will have the opportunity to acquire advanced knowledge and analytical and communication skills relevant to their work and to become members of a network of future coast guard leaders in the Indo-Pacific.

With financial support from the Japan International Cooperation Agency (JICA), junior coast guard officers from different parts of the world will study in Tokyo at GRIPS during the first half of the academic year and in Kure, Hiroshima at the Japan Coast Guard Academy (JCGA)– the JCG's most important educational institution–during the second half.

## Study at GRIPS

After enrolling in the program, the students will take required and elective courses at GRIPS from October through March. The required courses include International Relations, International Security Studies, International Law, International Relations in East Asia, and International Law of the Sea. The elective courses will enable students to deepen their knowledge in fields of their interest. The elective subjects include courses in political science, economics, national security, and policy making.

## Study at the JCGA

From April through July, the students will take courses and participate in practical training and educational programs at the JCGA. The required courses are Policy for Search and Rescue, Salvage and Maritime Disaster Prevention, and Maritime Police Policy. The students can further enhance their ability to effectively execute their duties as coast guard leaders in the Indo-Pacific through the study of a wide range of elective subjects. The JCGA's elective courses are designed to develop the students knowledge of science, technology, and criminal investigation, all of which are vital elements of effective policy formulation.

## Research Paper

During the course of one year, each students is required to write a research paper on issues relevant to the study of maritime safety and security. Students are encouraged to tackle problems relevant to the 21st century maritime and international security environment. With the guidance of the faculty of GRIPS and JCGA, the students are expected to enhance critical thinking, capabilities for agenda-setting and factfinding, and the skills to express their views in a convincing manner.

## >> TARGET GROUP

Junior coast guard officers from Japan and overseas

Curriculum	
Category	Course Name
Required Courses	<ul style="list-style-type: none"> <li>• Independent Study • International Relations in East Asia • International Relations • International Security Studies</li> <li>• Maritime Police Policy • International Law • International Law of the Sea</li> <li>• Policy for Search &amp; Rescue, Salvage and Maritime Disaster Prevention</li> <li>• Case Study on Maritime Safety and Security Policy I–II</li> </ul>
Recommended Courses	<ul style="list-style-type: none"> <li>• Essential Microeconomics • Essential Macroeconomics • Government and Market</li> <li>• Government and Politics in Japan • International Political Economy • Comparative Politics</li> <li>• State and Politics in Southeast Asia • Non-Traditional Security • The World and the SDGs</li> <li>• Introduction to Quantitative Methods • Introduction to Oceanography • Marine Environment and Pollution</li> <li>• International Comparative Criminal Law • Introduction to International Maritime Safety and Security Conventions</li> <li>• Traffic Management Systems I–II • Ship Maneuverability and Practical Operation</li> <li>• Fundamentals of Advanced Energy Engineering • Information Management System I–II</li> </ul>

## >> Incumbent Students and Alumni (as of April 1, 2023)

Total 59 students from 10 countries

**Bangladesh:** Bangladesh Coast Guard

**India:** Indian Coast Guard

**Indonesia:** Ministry of Transportation; Indonesia Coast Guard; National Search and Rescue Agency (BASARNAS)

**Japan:** Japan Coast Guard

**Malaysia:** Malaysian Maritime Enforcement Agency; Marine Department Malaysia

**Maldives:** Maldives National Defense Force

**Philippines:** Philippine Coast Guard; Maritime Industry Authority

**Sri Lanka:** Sri Lanka Coast Guard

**Thailand:** Royal Thai Navy; The Royal Thai Naval Special Warfare Command

**Vietnam:** Vietnam Coast Guard



**Degrees Offered**.....Ph.D. in Public Economics, Ph.D. in Development Economics, Ph.D. in International Economics,  
MA in Public Economics, MA in Development Economics, MA in International Economics  
**Language of Instruction**.....English  
**Time Schedule**.....**Program duration:** 5 years\* (master's + doctorate) **Enrollment:** October **Graduation:** September  
\*May vary according to student's ability and academic background

Related SDGs

**Website** [https://www.grips.ac.jp/en/education/phd\\_programs/analysis/](https://www.grips.ac.jp/en/education/phd_programs/analysis/)

1 2 3 4 5 6 7 8 9 10 11 12 13 15



**Roberto  
Leon-Gonzalez**  
Director  
Professor

## Educates individuals to research and analyse real-world policy issues

The Policy Analysis Program (PA), launched in 2008, is a 5-year Ph.D. program. A 3 year version is also available to students with a masters degree in Economics or a closely-related subject. The program prepares individuals to conduct high level research and to analyse actual policy issues, both theoretically and empirically. To this end, the program requires students to engage in economics and econometrics coursework in the early stages.

theories and subjects related to policy analysis, students will develop the ability to handle various policy issues. In addition to lectures, there are seminar classes aimed at increasing research skills. Students are also provided with opportunities to consider various practical issues with those who are involved in actual policy formulation and analysis through daily interactions, lectures, tutorials, and workshops.

### » TARGET GROUP

Those who hold a bachelor's and/or master's degree and are interested in pursuing a career as a researcher and analyst of public economics, development economics, and/or international economics are welcome to apply.

The coursework requirements are flexible, to suit the abilities of students with differing academic backgrounds. Those without a strong background in economics are expected to first study basic subjects for the master's course. For those students, the standard enrolment time is 5 years, though the required coursework is expected to be completed within 2 years. For students with a relevant masters degree, the 3 year program is recommended. All students must pass the qualifying examinations required for writing a doctoral thesis.

### » PROGRAM DESIGN

The study of advanced economics and econometrics methodology is compulsory. By studying specific economic

Curriculum	
Category	Course Name
<b>Core Courses</b> (Required)	<ul style="list-style-type: none"> <li>Advanced Microeconomics I – II</li> <li>Advanced Macroeconomics I – II</li> <li>Advanced Econometrics I – II</li> <li>Graduate Seminar I – III</li> </ul>
<b>Recommended Courses</b>	<ul style="list-style-type: none"> <li>Advanced Microeconomics III</li> <li>Advanced Microeconomics IV</li> <li>Advanced Macroeconomics III</li> <li>Advanced Macroeconomics IV</li> <li>Advanced Econometrics III</li> <li>Advanced Econometrics IV</li> </ul>
<b>Elective Courses</b>	<ul style="list-style-type: none"> <li>Introduction to Applied Econometrics</li> <li>Mathematics for Economic Analysis</li> <li>Computer Programming for Economics</li> <li>Graduate Seminar IV – V</li> <li>many other specialist Economics and non-Economics courses (with Director's approval)</li> </ul>

### » ORIGIN AND AFFILIATION OF STUDENTS

(as of April 1, 2023)

**Bangladesh:** Jagannath University; Centre for Policy Dialogue

**Chile:** Pontificia Universidad Catolica de Chile

**Cote d'Ivoire:** Prime Minister Office

**Ethiopia:** National Planning Commission of Ethiopia; Debre Berhan University

**Germany**

**Ghana:** Brainbirds Academy

**Japan:** Institute for Global Environmental Strategies

**Kyrgyz Republic**

**Madagascar**

**Thailand:** Ministry of Finance; Thammasat University; Bank of Thailand

**Vietnam:** Foreign Trade University; Diplomatic Academy of Vietnam

**Uganda:** Bank of Uganda; Makerere University; Guaranty Trust Bank Uganda Limited

**Uzbekistan:** The Central Bank of Uzbekistan

**Zimbabwe:** Zimbabwe Revenue Authority

- Essays on Gifted and Elite Education and Academic Performance in Vietnam (2023)
- Fishing in Troubled Water: The Impacts of the US-China Trade War on Vietnam's Export, Firms, and labor Market (2022)
- Essay on Education, Gender Equality, Fertility and Child Labor (2022)
- Hunting and Nurturing Gazelles: Evidence from Business Plan Competitions in Ethiopia (2022)
- Social and Economic Impacts of Air Pollution: The Case of Ulaanbaatar, Mongolia (2022)
- Essays on Impact Evaluations of Education and Health Policies in Southern Africa (2022)
- Legal Bans and Traditional Practices in Africa: the Effect of Criminalizing Female Genital Cutting on the Practice and Well-being (2021)
- The Effects of Climate Change on Rural-Urban Migration in the Mekong Delta, Vietnam (2021)
- Effects of Monetary Policy, Fiscal Policy, and Health Shocks on Household Outcomes: the Role of Financial Inclusion (2020)
- Essays on Bank Risks: The Case of Philippine Banks (2020)
- The Interaction of Interest Rates, Credit, Inflation and Monetary Policy in Vietnam (2020)
- Essays on Fiscal and Monetary Policies in Malawi (2019)

- General Equilibrium Analysis of Globalizing Capital and Labor Mobility; Its Impacts on Growth, Poverty and Inequality (2019)
- Work-Life Balance and Gender Equality in Japan (2018)
- Between Three Fires: Population Pressure, Soil Degradation, and Land Conflicts in Sub-Saharan Africa – Evidence from Kenya and Uganda (2018)
- Essays on Risk Premia in Emerging Market Currencies (2018)
- Essays on Migration, Conflict and Human Capital Development: Evidence from Nepal (2017)
- The Effects of Education on Fertility and on Labour Market Outcomes: Regression Discontinuity Evidence from Ghana (2017)
- Behavioural Economics and Decision-Making in Agricultural Households: Evidence from Rural Uganda (2017)
- Essays on Roll-on/Roll-off Policy: The Impact of Nautical Highways in the Philippines (2016)

### » RECENT THESES

- Intended and Unintended Impacts of minimum Wage Change and Foreign Direct Investment: A Computable General Equilibrium Model Analysis with Cross-border Factor Mobility in the Philippines (2023)

**Degrees Offered**.....Ph.D. in Advanced Policy Studies, Ph.D. in International Development Studies, Ph.D. in International Relations

**Language of Instruction**.....English

**Time Schedule**.....Program duration: 3 years Enrollment: October Graduation: September

Related SDGs

**Website** [https://www.grips.ac.jp/en/education/phd\\_programs/g-cube/](https://www.grips.ac.jp/en/education/phd_programs/g-cube/)

1 2 3 4 5 6 7 8 9 10 11 12 13 14 15 16 17



**Kazushi Takahashi**  
Director  
Professor

**This program aims to nurture leaders of leaders, individuals who will lead specialized leaders and coordinate a variety of values and interests from a broad perspective so as to address vital challenges facing global society.**

This program is designed to equip students to become a leader of leaders. While the world faces complex and large-scale issues that cannot be solved by one nation or one leader only, including environmental destruction, terrorism, and wars, the world economy is growing as a whole after the Cold War ended in 1990. According to the World Bank, the poverty rate decreased from 36% in 1990 to 10% in 2015, and the number of poor people declined from 1,895 million to 736 million during the same period. The time when wealth is concentrated in the hands of seven major industrialized nations, or G7, has come to an end. Now is the time when the world order can only be discussed with the participation of emerging nations, typically G20 members. Through this program, students are expected to acquire advanced knowledge of economics, political science, history, and area studies, as well as leadership skills for leading to be demonstrated in a team of such specialists.

This program started in 2014, and 79 students from 28 countries worldwide have studied here in the past eight years. Most of the students have work experience in core national government agencies, such as ministries of foreign affairs and finance and central banks. They not only deepen expertise and professional skills individually but also develop their unique point of view by studying with classmates from all over the world during enrollment of this program. 28 students have already earned doctorates and are working for their home countries or international institutes, such as the World Bank.

Our unique teaching methods that attach importance to communication increase peer learning and hard work together among students, which makes G-cube program become a multinational and multidisciplinary community of intelligence.

For the further development of the G-cube community, the curriculum was reorganized into three courses for the 2021 academic year and onwards. In the Growth and Governance Studies (GGS) Concentration, students learn what governance system can be established for the realization of sustainable development in the process of economic growth. In the International Development Studies (IDS) Concentration, students discuss the wide development issues, including poverty, inequality, and economic growth, as well as specific problems each nation faces, including rural development, human capital, industrial development, gender, immigrants, disputes, and governance and corruption, using Economics tools. In the Security and International Studies (SIS) Concentration, students learn security and diplomatic policy issues, mainly based on analytical methods used in international relations as well as international politics and economics. In all courses, students consider, from a historical perspective including the experience of Japan, what the factors that hinder sustainable development are.



**Yoko Kijima**  
Associate Director  
Professor



**Yoko Iwama**  
Associate Director  
Professor



**Yusuke Takagi**  
Associate Director  
Associate Professor



### Growth and Governance Studies (GGS) Concentration

In the Growth and Governance Studies (GGS) Concentration, students discuss issues that occur because of or in spite of the growth of the economy. Although the world economy is growing as a whole thanks to globalization, such problems as the social and economic polarization and environmental disruption cannot be solved unless concrete measures are implemented. Triggered by the activities of multinational businesses mainly in the information field, the necessity of a new framework to protect the rights of individuals is discussed. In this course, students discuss the growth necessary for sustainable development and the problems caused by such development with a focus on governance, which is a political activity.

Governance is a human activity to bring about a certain order in all issues. The methods include the use of systems, for example,

laws and policies, as well as activities, such as promotion of environmental awareness. In the past, most part of governance was assumed by a government. Keeping pace with the progress of democratization and the expansion of markets, non-governmental organizations (NGOs) consisting of volunteer citizens and private companies practically undertake governance on a wide variety of occasions. On the other hand, it is true that there are areas where regulations or actions by a government are expected, including activities of multinational businesses and international terrorists. For sustainable development, inclusive and problem-solving-style governance is necessary in addition to growth. This course is designed for students to acquire wide knowledge in the fields of area studies, in addition to international politics, comparative politics, and political economy and be equipped to become intelligent leaders who have a wider perspective.

### International Development Studies (IDS) Concentration

In the International Development Studies (IDS) Concentration, students examine the issues developing nations face using the methods of economics in the main. For sure, nationwide development triggered by economic growth is essential for the reduction of poverty. However, there is no guarantee that the benefit of economic growth will reach poor people because there are a variety of inhibiting factors, such as the nation's governance and institutions, industrial structure, physical and human capital, and the historical background. In this course, students consider a variety factors required to realize sustainable development in addition to economic growth.

Each country has different and various issues, including rural development, human capital, industrial development, gender, immigrants, terrorism and armed conflicts, governance/corruption, climate change, disasters, and vulnerability. This course is designed for students to acquire the methods used in development economics, as well as knowledge of the political science and history to understand a variety of issues and be equipped to become those who have the sophisticated abilities of analyzing, evaluating, and making policies.

Curriculum: Growth and Governance Studies (GGS) Concentration / International Development Studies (IDS) Concentration	
Category	Course Name
Required Courses	<ul style="list-style-type: none"> <li>• Dissertation Proposal Seminar</li> <li>• G-cube Workshop</li> </ul>
Recommended Courses	<ul style="list-style-type: none"> <li>• Tutorial I–III</li> </ul>
Auxiliary Table	<ul style="list-style-type: none"> <li>• Politics in Africa</li> <li>• States, Regimes, and Institutions in Contemporary Africa</li> <li>• State and Governance</li> <li>• Advanced International Relations in East Asia</li> <li>• The Making of Modern Japan (Advanced)</li> <li>• Advanced Comparative Development Studies of Asia</li> <li>• Politics and Diplomacy in Postwar Japan</li> <li>• Advanced International Security Studies</li> <li>• Comparative Politics</li> <li>• State and Politics in Southeast Asia (Advanced)</li> <li>• Advanced Comparative Political Economy</li> <li>• Advanced International Relations in Europe</li> <li>• International Development Policy</li> <li>• Introduction to Applied Econometrics</li> <li>• Applied Econometrics</li> <li>• Applied Econometrics Practice</li> <li>• Data Science for Public Policy</li> <li>• Resource and Energy Economics</li> <li>• Economic Development of Japan</li> <li>• Development Economics</li> <li>• Development History of Asia: Policy, Market and Technology</li> <li>• Agricultural Development</li> <li>• Development Econometrics</li> <li>• Economic History and Institutions</li> <li>• Theoretical Foundation of Economic Policy</li> <li>• Advanced Development Economics</li> <li>• Economics of Health and Education</li> <li>• Trade and Industrial Development</li> </ul>
Elective Courses	Other courses (with the advisory committee's approval)

### Security and International Studies (SIS) Concentration

In the Security and International Studies (SIS) Concentration, students tackle the traditional diplomatic and military-security issues, as well as new domains such as terrorism, pandemic, cyber and space, using mainly international relations and international political economic tools. But it is clear that in a world where the center of gravity is shifting from the Atlantic to Indo-Pacific,

traditional tools developed in Euro-American world alone would not be sufficient. We expect the students to open up new academic horizons and be active as first class practitioners in the world of diplomacy, think tanks and international and regional organizations.

Curriculum: Security and International Studies (SIS) Concentration	
Category	Course Name
Required Courses	<ul style="list-style-type: none"> <li>• Dissertation Proposal Seminar</li> <li>• G-cube Workshop</li> </ul>
Recommended Courses	<ul style="list-style-type: none"> <li>• Tutorial I–III</li> </ul>
Auxiliary Table	<ul style="list-style-type: none"> <li>• International Political Economy Workshop</li> <li>• Advanced International Relations</li> <li>• Advanced International Security Studies</li> <li>• Comparative Politics</li> <li>• Politics in Africa</li> <li>• Analysis of Great Power Politics</li> <li>• States, Regimes, and Institutions in Contemporary Africa</li> <li>• Strategic Studies Research Seminar</li> <li>• State and Governance</li> <li>• Advanced International Relations in East Asia</li> <li>• The Making of Modern Japan (Advanced)</li> <li>• Politics and Diplomacy in Postwar Japan</li> <li>• State and Politics in Southeast Asia (Advanced)</li> <li>• Politics of Global Money and Finance (Advanced)</li> <li>• Advanced Comparative Political Economy</li> <li>• Advanced International Relations in Europe</li> <li>• International Development Policy</li> <li>• Resource and Energy Economics</li> <li>• Development Economics</li> <li>• Economic Development of Japan</li> <li>• Development History of Asia: Policy, Market and Technology</li> <li>• Agricultural Development</li> <li>• Development Econometrics</li> <li>• Economic History and Institutions</li> <li>• Advanced Development Economics</li> <li>• Trade and Industrial Development</li> </ul>
Elective Courses	Other courses (with the advisory committee's approval)

### >> CAREER DESTINATIONS

Graduates from G-cube are expected to actively pursue a career in the government, international organizations or in the private sector, such as global businesses.

### >> ORIGIN AND AFFILIATION OF STUDENTS

(as of April 1, 2023)

**Bangladesh:** Ministry of Public Administration; Bangladesh Bank

**Cambodia:** State Secretariat of Civil Aviation (SSCA); National Bank of Cambodia; Ministry of Economy and Finance

**Central Africa:** ARCEP

**Egypt:** The Ministry of Finance

**Eritrea:** Adikeih College of Arts and Social Sciences

**Ethiopia:** Office of the Prime Minister; Addis Ababa University

**Ghana:** Office of Head Civil Service; National Peace Council; Ministry of Finance; University of Ghana Business School

**Indonesia:** Ministry of State Secretariat; Ministry of Foreign Affairs

**Japan:** Japan International Cooperation Agency(JICA); Board of Audit of Japan; Japan Institute of International Affairs; JMSDF Staff College; Sumitomo Corporation Global Research Co. Ltd.; Ministry of Foreign Affairs of Japan

**Kenya:** The Kenya Institute for Public Policy Research and Analysis

**Laos:** Ministry of Planning and Investment; The Office of Party Central Committee (OPCC) of Laos

**Malawi:** Ministry of Local Government

**Malaysia:** Ministry of Rural Development; Ministry of Science, Technology and Innovation; Ministry of International Trade and Industry

**Maldives:** South Asian Association for Regional Cooperation (SAARC)

**Mali:** Business Consultants, Inc.; Management consulting firm

**Myanmar:** Myanmar Foreign Trade Bank; Ministry of Planning and Finance

**Nepal:** Ministry of Finance

**Pakistan:** National Accountability Bureau (NAB); Federal Board of Pakistan

**Philippines:** Office of the Special Envoy on Transnational Crime; Office of the President; Philippine Coast Guard, Bangko Sentral ng Pilipinas; Asian Development Bank; Provincial Government of Davao de Oro; Australian Embassy in the Philippines

**Rwanda:** Office of the Prime Minister

**Republic of Korea:** National Assembly Secretariat; Ministry of Economy and Finance

**Sri Lanka:** Ministry of National Policies and Economic Affairs; University of Sri Jayewardenepura

**Taiwan:** Taiwan Democratic Progressive Party Mission in the US

**Tanzania:** Ministry of Finance

**Thailand:** Bank of Thailand; Ministry of Interior; Chulalongkorn University; JICA Thailand Office; Chiang Mai University; The Secretariat of the Cabinet; Thammasat University

**Uganda:** Bank of Uganda

**United States of America:** Pacific Forum International

**Viet Nam:** Hau Giang Home Affairs Department; Department of Information and Communications; The Organization Commission of Hai Phong City Party Committee; State Bank of Vietnam



**Degree Offered**.....Ph.D. in Disaster Management

**Language of Instruction**.....English

**Time Schedule**.....Program duration: 3 years Enrollment: October Graduation: September

Related SDGs

**Website** [https://www.grips.ac.jp/en/education/phd\\_programs/disaster/](https://www.grips.ac.jp/en/education/phd_programs/disaster/)

1 2 3 6 7 9 10 11 13 14 15 17



**Naohiko Hibino**  
Director  
Professor



**Koji Katayama**  
Associate Director  
Professor

## Cultivates professionals who can educate researchers and take leadership in the planning and implementation of national and international strategy and water-related risk management policy

Water-related disasters are intensifying in frequency and magnitude due to such worldwide phenomena as urbanization, industrialization, and climate change. These disasters cause devastating loss of human life and livelihood, and seriously impede economic development.

It is increasingly evident that capacity development and human empowerment are the necessary foundation to ensure that societies are resilient against disasters and capable of sustainable development. In order to enhance that foundation, it is urgent that countries increase their capacity to train researchers, educators and strategy/policy specialists in risk management.

In the interest of supporting countries in such capacity building, the National Graduate Institute for Policy Studies (GRIPS) and the International Centre for Water Hazard and Risk Management (ICHARM) of the Public Works Research Institute (PWRI) jointly launched a Ph.D. program in October 2010. The broad aim of the program is to nurture professionals who can train researchers and take leadership in the planning and implementation of national and international strategy and water-related risk management policy.

### » TARGET GROUP

Technical officials, engineers, and researchers in the fields of water-related disasters and disaster risk management policy in developing countries.

### » PROGRAM DESIGN

At the end of the first year of the doctoral program, each student is expected to submit a thesis proposal and pass a Qualifying Examination (QE). In order to be eligible for the doctoral dissertation QE, the student must earn a minimum of 8 credits from among the courses offered, not only at GRIPS and ICHARM, but also at the University of Tokyo. In addition, the student's supervising committee may advise the student to take up to 4 credits from Category III. After passing the QE, the student can begin dissertation work in the second academic year, with the aim of completing it by the end of the third year.

After starting work on her/his dissertation, the student is required to attend a Preliminary Presentation to report on the research that she/he is planning or already pursuing. At the end of the third year, to complete the doctoral course work, each student is required to present the results of his/her research in a Ph.D./doctoral thesis defense, and demonstrate the validity, relevance, and academic contribution of the findings.

### » SCHOLARSHIP (For International Students Only)

ICHARM Research Assistantship  
JICA

Curriculum	
Category	Course Name
Electives	<ul style="list-style-type: none"> <li>Supply Chain Management for Infrastructure Planners</li> <li>Advanced Infrastructure and Regional Development: Lessons from the Past</li> <li>Advanced Disaster Management Policies A: from Regional and Infrastructure Aspect</li> <li>Advanced Disaster Management Policies B: from Urban and Community Aspect</li> <li>Hydraulics • Advanced Integrated Flood Management</li> <li>Advanced Urban Flood Management and Flood Hazard Mapping</li> <li>Socio-economic and Environmental Aspects of Advanced Sustainability-oriented Flood Management</li> <li>Hydrology • Advanced Flood Hydraulics and River Channel Design</li> <li>Advanced Mechanics of Sediment Transportation and Channel Changes • Advanced Hydrometeorology</li> <li>Advanced Hydrodynamics • International Policies on Water and Disasters</li> </ul>

### » ORIGIN AND AFFILIATION OF STUDENTS (as of April 1, 2023)

**Bangladesh:** Bangladesh Water Development Board (BWDB);

Khulna University

**Ethiopia:** Basin Development Authority

**Guatemala:** National Coordinator for Disaster Reduction;  
Wageningen University

**Japan:** NIPPON KOEI CO., LTD.; Ministry of Land, Infrastructure,  
Transport and Tourism

**Nepal:** Ministry of Energy, Water Resources and Irrigation

**Nicaragua:** UNAN-Managua

**Pakistan:** Water & Power Development Authority (WAPDA); Pakistan  
Space & Upper Atmosphere Research Commission (SUPARCO);  
Government of Balochistan

**Philippines:** University of the Philippines, Los Banos

**Sri Lanka:** Irrigation Department of Sri Lanka; Mahaweli Authority;  
Dept. of Meteorology

**Vietnam:** Vietnam Disaster Management Authority, MARD

### » RECENT THESES

- A study on climate change adaptation and resilience strategies for optimizing benefits of the Mahaweli River Basin in Sri Lanka (2021)
- Integrated operation of reservoirs for maximizing hydropower and reducing flood risk (2021)
- 流域治水の推進に必要な合意形成のための減災対策による被害軽減効果の評価手法の研究 (2021)
- Numerical Study on Tidal Currents and Bed Morphology in Sittang River Estuary, Myanmar (2020)

- Fundamental Study For 2-D Numerical Simulation of Channel Changes in Large Rivers Dominated by Fine Sediment (2019)
- Developing a Methodology for Integrated Flood Risk Assessment in a Transboundary River Basin Using Multi-Platform Data Under Global Change – the Case of the Meghna River Basin (2019)
- Development of an integrated hydrological modeling framework in mountainous areas including rainfall and snowfall quantification derived from data integration (2018)
- Assessment of Selected Strategies to Increase Economic Benefits in Haor Areas in Bangladesh (2018)

**Degrees Offered**.....Ph.D. in Public Policy, Doctor of Policy Studies

**Language of Instruction**.....English, Japanese

**Time Schedule**.....Program duration: 3 years Enrollment: April or October Graduation: March or September

Related SDGs

**Website** [https://www.grips.ac.jp/en/education/phd\\_programs/innovation/](https://www.grips.ac.jp/en/education/phd_programs/innovation/)

1 2 3 4 5 6 7 8 9 10 11 12 13 14 15 16



**Takayuki Hayashi**  
Director  
Professor

**This program equips government officials with the skills needed to design, implement and evaluate policies related to science, technology and innovation based on a scientific approach, and trains other professionals to become experts in the theory and practice of policy making**

In a knowledge-based society, where knowledge has a major impact on economic and social development, the role of science, technology, and innovation policies is rapidly increasing not only for the development of scientific knowledge but also for the creation of new industries and the resolution of social issues such as the SDGs. Also, in the age of digitization, the methodology of research development and innovation has changed, and it is necessary to understand how policies and management should be.

also accommodates lecturers who are engaged on the frontline of current science and technology policies.

Additionally, the program holds a range of research workshops and seminars and invites eminent researchers and practitioners, current policy administrators, politicians, and corporate representatives, among others.

## » TARGET GROUP

We would welcome policy practitioners who hold master's degrees and have the necessary practical experience and/or research skills to undertake social science research at the doctoral level. Those who have completed master's courses in relevant areas of study (including natural science and engineering) at other institutions are also welcomed.

## » PROGRAM DESIGN

In the first year, students are required to undertake course work and earn a minimum of 10 credits from the courses and seminars.

In the second year, students are expected to pass the Qualifying Examination (QE). After completing QE, students can start writing a dissertation to complete it by the end of the third year.



**Koichi Sumikura**  
Associate Director  
Professor

This program aims to develop highly skilled professionals who can design and propose effective science and technology innovation policies (including science policy, industrial technology policy, innovation policy, environmental policy, energy policy, etc.) using scientific approaches at national and local governments, universities, public institutions, and companies, as well as researchers who conduct research and education on science and technology innovation policies at universities and public research institutes. They will become acquainted with the multiple disciplines, achieve research competence in various social science fields, and gain teaching ability in the higher education.



**Patarapong Intarakumnerd**  
Associate Director  
Professor

We host prominent professors who are experts on the research regarding science and technology policy from inside and outside Japan. To achieve more practical research education, the program

Curriculum	
Category	Course Name
Required Courses	<ul style="list-style-type: none"> <li>• Research Seminar I – IV</li> </ul>
Recommended Courses	<ul style="list-style-type: none"> <li>• Introduction to Applied Econometrics (Advanced)</li> <li>• Quantitative Data Analysis</li> <li>• Economics of Innovation</li> <li>• Policy for Higher Education and University-Industry Cooperation</li> <li>• Comparative Analysis of Science, Technology and Innovation Policy: Asian Experiences</li> <li>• Comparative Paths of Science, Technology and Innovation Policy</li> <li>• Science, Technology and Innovation Policy in Developing Country Context</li> <li>• History of Japanese Science, Technology and Innovation Policy</li> <li>• Energy and Environmental Science &amp; Technology</li> <li>• Energy Policy in Japan</li> <li>• Trade and Industrial Development</li> <li>• Development Economics (Advanced)</li> <li>• International Policies on Water and Disasters</li> <li>• Advanced International Relations</li> <li>• Politics of Innovation</li> <li>• Bibliometrics and Applications</li> <li>• Roles of Intellectual Property Rights in Globalized World</li> <li>• Outline of Energy Policy</li> <li>• Advanced Energy Policy</li> <li>• Energy Data Analysis</li> <li>• Energy Security</li> <li>• Research Seminar V – VI</li> <li>• Advanced Topics I</li> </ul>

## » ORIGIN AND AFFILIATION OF PAST & CURRENT STUDENTS (as of April 1, 2023)

**Egypt:** Ministry of Petroleum and Mineral Resources; Ministry of Electricity

**Indonesia:** Indonesian Ministry of Research and Technology

**Japan:** British Embassy Tokyo; Ministry of Education, Culture, Sports, Science and Technology (MEXT); Ministry of Economy, Trade and Industry (METI); Nippon Export and Investment Insurance (NEXI); Nuclear Regulation Agency; Japan Science and Technology Agency (JST); Japan Aerospace Exploration Agency (JAXA); National Center for Global Health and Medicine (NCGM); National Institutes for the Humanities (HIHU); United Nations Development Programme (UNDP); Ocean Policy Research Institute, The Sasakawa Peace Foundation (OPRI)

**Pakistan:** Mehran University of Engineering and Technology

**Philippines:** Ateneo de Manila University

**Thailand:** National Science Technology and Innovation Policy Office; National Science and Technology Development Agency;

Office of National Higher Education Science Research and Innovation Policy Council (NXPO); Thammasat University

**USA:** US Army Research Development and Engineering Command

**Viet Nam:** Vietnamese Ministry of Science and Technology

## » RECENT THESES

- University-Industry Collaboration in Japan and Thailand: Influence of Key Actors' Characteristics and Effect of Modes (2015)
- Societal Impact of Open Access to Research (2017)
- Promoting Scientodiversity through Research Grants (2018)
- Impacts of Research Team Diversity and Top Management on Research Commercialization of a Public Research Institute in Thailand (2018)

- Optimizing International Science & Technology Collaboration through Scientometric Studies (2019)
- An Inquiry of Government's Extending the Role of State-owned Enterprises for the Interest of Science, Technology and Innovation Policy : Case Studies from Indonesia (2019)
- Influence of Systemic Analytical Capacity on Policy-relevant Knowledge Production and Utilization: Case of Science of Science and Innovation Policy (2021)
- Renewable Energy Policy and Investment Decision-Making in Electricity Markets (2021)
- Essays on Evaluation of Global Health Policy on Tuberculosis Control (2022)
- Fostering Further Participation in Agri-Food Business Global Value Chains: A Multiple Case-Study on Intermediary Roles and Capabilities in the Philippine Rice and Mango Industries (2022)

# Executive Development Center for Global Leadership

**Website** <https://www.grips.ac.jp/en/training2/tailormade/>



Director  
**Hirofumi Takada**  
Professor

One of the core missions of the National Graduate Institute for Policy Studies (GRIPS) is to educate and develop public policy leaders and public sector professionals from around the world. Accordingly, in response to requests by foreign government agencies, GRIPS has been offering a wide range of training programs in addition to its regular academic programs (masters and doctoral degrees).

Since its establishment in 2013, the Executive Development Center for Global Leadership has been providing short-term training programs which meet our mission and needs of public

sectors. Each program consists of a wide range of approaches including lectures given by GRIPS professors, site visits, discussions and workshops. From the planning stage, we require our client organizations to clarify subjects and issues of their interest as well as the background of the objectives in order to build training programs better suited to their context.

GRIPS started offering online programs amid the pandemic since 2020, and face-to-face programs are provided again from FY2022. GRIPS professors plan and provide lectures and discussions through various tools and methods.



## » Examples of Specific Short-Term Training Programs by GRIPS

- Training program for National and Local Leaders of Vietnam
- Training program for National Security College, Australian National University
- Training programs for the King Prajadhipok's Institute (KPI) of Thailand
- Training program for Vice Minister level Government Officials of Lao PDR
- Training of trainers: planning and budgeting for BAPPENAS, Republic of Indonesia
- Training program for Executive Government Officials of Bangladesh
- Training Program on Public Sector Reform for the Malaysian Government Officials and University Executives
- Public management and leadership training program (PMLTP) for high-potential Government Officials from Thailand
- Japan-IMF Macroeconomic Seminar for Asia (JIMS) (About 20 Asian countries)
- Training Program for the Development Academy of the Philippines (DAP)
- Training Program for promising young Taiwanese
- Special Education Program for International students in Japan to understand "Japan's Postwar Development"

## » Other activities

- Research projects on leadership and management development in Asian countries
- Consulting services regarding human resource development
- Research and studies to enrich the content of training programs
- Support for development of training programs in foreign countries

For the past programs, please visit GRIPS website at  
<https://www.grips.ac.jp/en/training/>





Director  
**Katerina Petchko**  
Professor

Words have the power to move people's minds, transform people's lives, and change the world. Using words effectively is not the product of inspiration; it is the result of knowing how to structure and present information to achieve an intended purpose for a particular audience. The mission of the Center for Professional Communication (CPC) is to support GRIPS' students, faculty, and staff in developing effective professional communication skills and competencies needed to communicate and interact productively in an environment of multiple stakeholders. To that end, we offer a range of instruction, services, and support in fundamental areas of professional communication in English and Japanese. Below are some of the programs and support structures we offer.

- A comprehensive academic writing program that supports the production of policy papers, theses, and dissertations at GRIPS. The program includes regular courses, writing tutorials, and occasional seminars and special events.
- Programs and courses in professional communication skills (e.g., presentation skills, grant proposal writing, digital communications, policy report writing).
- Seminars, symposia, and special events related to all aspects of professional communication and language learning.
- Editing, proofreading, and language support services for doctoral students, faculty, and staff.

- Professional development opportunities for faculty and staff.
- Opportunities and resources for cultural, academic, and special-interest exchanges through a self-access learning center—the CPC Communication Lounge.
- Handbooks, guidebooks, and other materials on academic and professional writing and language learning developed by CPC faculty and customized for students' self-study, guided learning, and research.

The Center's main strength is its outstanding faculty. Our faculty are experts in professional communication, disciplinary writing, and language learning and teaching, with advanced academic training and years of professional experience; many hold doctorates and have a strong record of academic and research accomplishments. Our faculty's expertise encompasses a wide range of areas in economics, political science, public policy, education, psychology, and applied linguistics. Drawing on extensive scholarship in educational theory and practice, the Center promotes evidence-based curriculum development and instruction, establishes best practices in teaching and learning, and strives to become a recognized center of excellence in Japan and the world.





Director  
**Takashi Tsuchiya**  
Professor

## Center for Data Science and Education/Research in Data Science

In the 21st century, mankind is facing a number of unpredictable and unprecedented new problems including the COVID-19 pandemic and accelerating global warming. At the same time, the internet, big data, and AI have come to be an indispensable fundamental social infrastructure, and new possibilities of science and technologies are emerging now for addressing the above problems. The field of data science provides methodologies for the handling and analysis of data; in that context, it is a powerful tool.

These circumstances pose an urgent and significant challenge for the national government and municipalities: to reform current policymaking processes into new, data- and model-driven ones—which will surely require the support of data science. Even the fate of this country might depend on the success of this renovation.

One major obstacle, however, is the towering wall separating liberal arts/social sciences and technology/natural sciences. The wall is deeply entrenched in traditional higher educational systems. As a result, most of those engaged in policy making pursue their research problems with no background in data science, missing the opportunity to acquire knowledge and skills in the subject despite their high potential and ability. It is urgently necessary to rectify this

situation and foster policymakers with broad interdisciplinary perspectives.

With strong awareness of this situation, GRIPS established the Center for Data Science in April 2022, aiming to promote both education in and research on data science, directed at the development of policy science. For that purpose, GRIPS will conduct necessary projects concerning data science education and research, centered on the following actions:

- (1) Provision of follow-up data science-related classes;
- (2) Provision of consultations for students and researchers concerning data analysis and modeling as a whole;
- (3) Provision of training in the use of software such as R language and Stata, and instruction in the mathematical theory for data science;
- (4) Promotion of joint data science related research within and outside GRIPS, and hold related symposiums; and
- (5) Development of GRIPS' data archives.

GRIPS faculty includes academic policy science researchers in broad areas, from the arts to sciences, and policymakers well-versed in planning and implementation of policies. As such, GRIPS offers an ideal environment for data science education and research in the field of policy science, also in terms of its easily accessible location.

## Education in Data Science at GRIPS: Certificate in Data Science for Policy Studies

Recognizing that data science is now an essential tool for government officials, GRIPS is focusing on data science education, centered on the basic/core Data Science courses *Introduction to Data Science* and *Data Science in Practice*. In those courses, the students learn statistical and machine learning methods, ranging from theory and programming

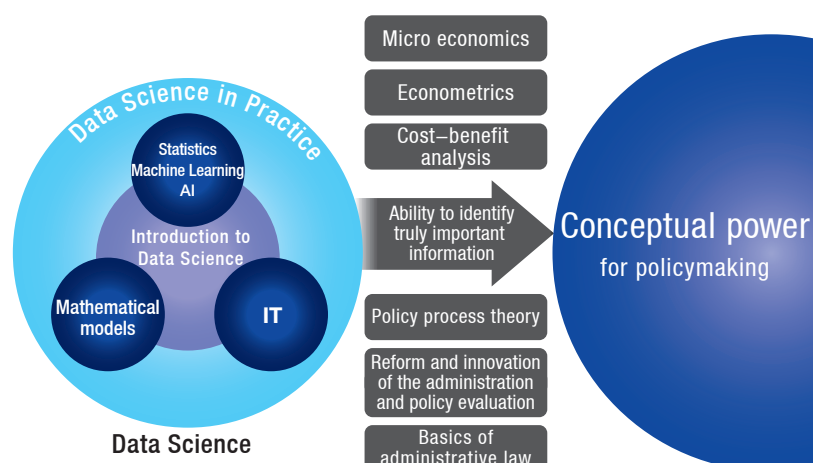
to application, and acquire the practical data analysis skills necessary for evidence-based policymaking. Students also study related fields such as econometrics, operations research, and geographic information systems, to cultivate practical skills that can be applied to general duties.

To encourage GRIPS students to take data science-related courses, GRIPS has established its Certificate System in Data Science (DS) for Policy Studies. Under the certification system, students who fulfil all of the requirements below will be awarded a DS certificate.

1. Two (or more) credits for courses among the following data science basic/core courses:

- Introduction to Data Science
- Data Science in Practice
- Data Science for Public Policy

2. Ten (or more) credits (for five two-credit courses) for data science-related courses.



## Policy Research Center

Director: Yoko Kijima, Vice President, Professor

The Policy Research Center offers competitive research funds for short-term research projects, apart from independent research activities by faculty members. The Center actively promotes interdisciplinary and international research between researchers both inside and outside of GRIPS, as well as research that will lead to the acquisition of external funds in the future. To accelerate the execution of policy studies that can meet the needs of society, in FY 2019 the Center began funding research projects that contribute to SDGs; and in FY2023 initiated funding for projects that intend to promote data science that contributes to the development of policy science. There are 30 projects conducted in FY2022.

Research projects are recruited every year, screened, and newly selected. Accomplishment reports submitted by each project at the end of the fiscal year are evaluated by committees, including external committee members, and these systems contribute to the improvement of research standards.

Other than research projects, the Center supports seminars and symposiums inviting researchers from overseas, accepts visiting researchers from domestic and overseas research institutes, and encourages and subsidizes the publication of academic books and contributions to international journals.

Website: <https://www.grips.ac.jp/r-center/en/>

## The Science for RE-designing Science, Technology and Innovation Policy Center (SciREX Center)

Director: Masako Kurosawa, Member, Board of Trustees; Vice President; Professor

The Science for RE-designing Science, Technology and Innovation Policy (hereinafter "SciREX") Center was established in August, 2014, as a hub for various programs of the SciREX Initiative promoted by the Ministry of Education, Culture, Sports, Science and Technology. The aims of the Center are to (1) promote co-evolution of the policy community and the research community by providing opportunities for policymakers, researchers, and other professionals with diverse backgrounds, knowledge, and experience to work together and (2) develop, try out, and put into practice methodologies that contribute to finding solutions to policy issues related to science, technology and innovation.

To achieve these goals, the Center, in collaboration with relevant academic and research institutions, conducts several policy-oriented research projects that contribute to the promotion of evidence-based policy discussion and effective policy formation and implementation.

The center activities also include a network by early- and mid-career government officials, training of incumbent government officials involved in policymaking, student internship, and holding seminars.

Website: <https://scirex.grips.ac.jp/center/en/>

## Library

Director: Taichi Ono, Professor

The GRIPS Library offers an extensive collections of publications in the field of policy studies from around the world. The collections contains over 190,000 volumes, including reference books, statistical collections, working papers, and government documents. The Library's large collections of periodicals includes more than 12,000 journals, many of which are available online. To serve our academic community, the Library staff is well trained to respond to research-related requests.

Website: <https://www.grips.ac.jp/main/lib/en/>



# GRIPS ALLIANCE

GRIPS ALLIANCE, founded in 2013 as a laboratory of the National Graduate Institute for Policy Studies (GRIPS), contributes to the dissemination of democratic governance to the world and to its enhancement through strategic policy research on emerging issues. GRIPS ALLIANCE also develops and delivers high-level training programs in policy studies.

GRIPS ALLIANCE is structurally different from GRIPS. Whereas GRIPS is an educational institute dedicated to the fostering of administrative officers from all levels of government and to conducting policy research in general, GRIPS ALLIANCE is a research institute which conducts more practical high-level policy research by addressing emerging and difficult-to-solve problems through the application of flexible and innovative concepts and frameworks.

For optimum effectiveness, GRIPS ALLIANCE requires human resources capable of exemplary practical and theoretical work in policy studies and of delivery of cutting edge instruction in all aspects of policy. To that end, GRIPS ALLIANCE maintains a solid and well-defined relationship with GRIPS while conducting its activities in an original and autonomous fashion.

## » Objectives of GRIPS ALLIANCE

The objectives of GRIPS ALLIANCE are:

- To serve as an interministerial and intersectional policy studies laboratory for use by statesmen and government policymakers;
- To identify problems and raise issues from new perspectives rather than relying on conventional wisdom;
- To provide a venue for discussions based on specialized knowledge relevant to policy questions that are not easily addressed by a single ministry;
- To provide cross-ministerial training programs; and

- To ensure academic freedom and a supportive environment for the achievement of the above objectives.

In its work to achieve the above objectives, GRIPS ALLIANCE:

- ① Conducts research in collaboration with statesmen, government officials, and the private sector on policies and strategies which are difficult to place within existing concept arrays or frameworks;
- ② Develops professional human resources with specialized knowledge and expertise who are available for the solution of pressing policy problems; and
- ③ Provides opportunities for international policy dialogs open to all ministry personnel and to individuals from Japan, Asia (ASEAN), the Americas and Europe who have relevant policy background.

## » Organizational Structure

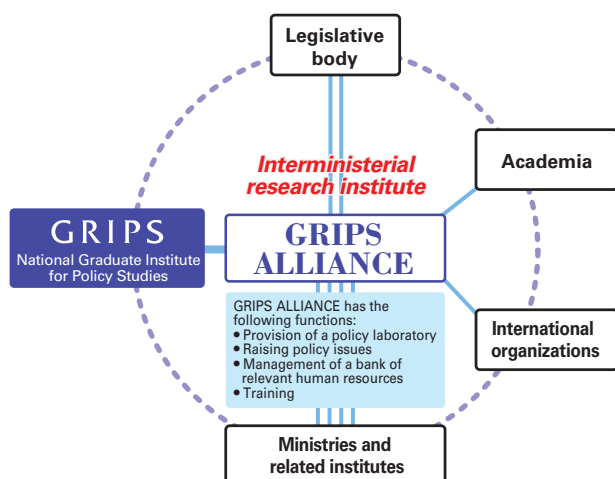
GRIPS ALLIANCE was established within GRIPS, but it operates semi-independently. This reflects the unique structure of GRIPS ALLIANCE, which encourages the participation of ministries and related institutes in GRIPS ALLIANCE research projects so as to create an integrated organic and pluralistic network of highly qualified contributors. The name “ALLIANCE” reflects both the above network and the relationship between GRIPS ALLIANCE and GRIPS.

The operating policy of GRIPS ALLIANCE is shaped and refined in an ongoing manner at the monthly board meetings. Based on the discussions and decisions of the board, GRIPS ALLIANCE organizes research project meetings involving ministries, related institutes, and GRIPS faculty.

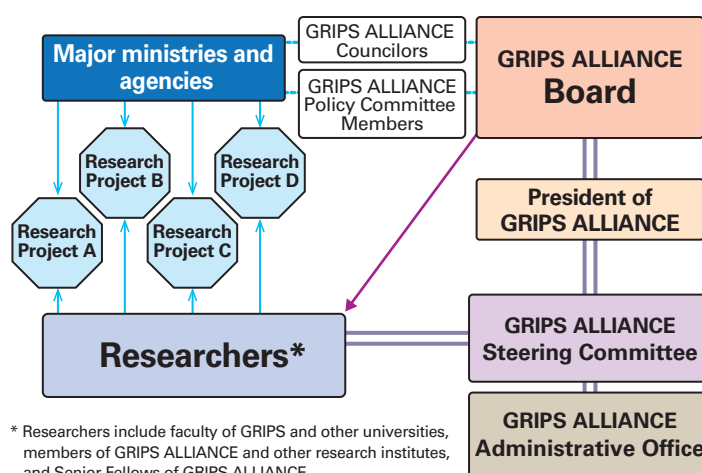
Please check the website to see the Board members.

<https://www.grips.ac.jp/en/about/organization/>

Graphic representation of the relationship between GRIPS ALLIANCE and related agencies



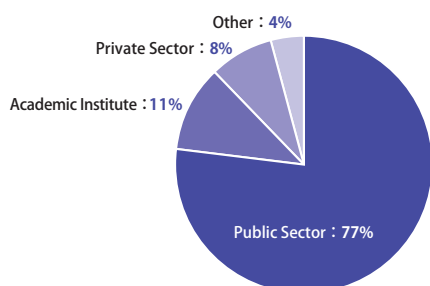
Structure of GRIPS ALLIANCE



\* Researchers include faculty of GRIPS and other universities, members of GRIPS ALLIANCE and other research institutes, and Senior Fellows of GRIPS ALLIANCE

# Facts and Figures

**Where are GRIPS Alumni working?**  
(Graduated 2022)



## Number of Students by Country and Region

(as of May 2023)

<b>Asia</b> 22 countries & regions	Bangladesh	15	Bhutan	4	Cambodia	5	China	2	India	7	Indonesia	18
	Japan	128	Laos	3	Malaysia	8	Maldives	2	Mongolia	2	Myanmar	9
	Nepal	4	Pakistan	8	Philippines	24	Singapore	1	South Korea	7	Sri Lanka	11
	Taiwan	1	Thailand	17	Timor-Leste	2	Vietnam	8				
<b>Pacific</b> 2 countries	Australia	2	Fiji	2								
<b>North America</b> 1 country	U.S.A.	3										
<b>Latin America</b> 3 countries	Brazil	1	Chile	1	Paraguay	1						
<b>Europe</b> (including NIS countries) 10 countries	Azerbaijan	1	Bulgaria	1	Czech	1	Germany	1	Kazakhstan	2	Kyrgyz Republic	3
	Lithuania	1	Poland	1	Turkmenistan	1	Uzbekistan	5				
<b>Middle East</b> 1 country	Turkey	2										
<b>Africa</b> 18 countries	Botswana	1	Central African Republic	1	Comoros	1	Cote d'Ivoire	1	Egypt	6	Ethiopia	8
	Ghana	7	Kenya	5	Madagascar	1	Malawi	2	Mali	1	Namibia	1
	Nigeria	1	Tanzania	3	Tunisia	1	Uganda	5	Zambia	1	Zimbabwe	1

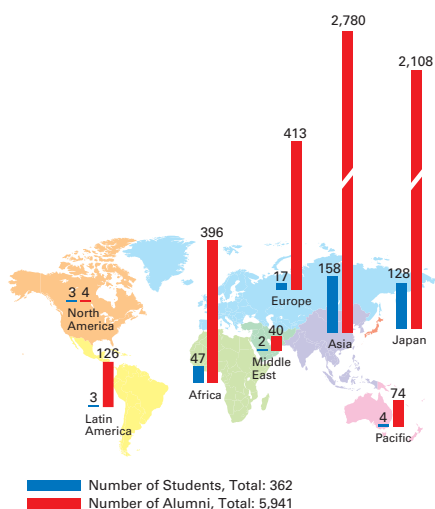
Total number of countries and regions: 57 Total number of students: 362

## GRIPS/GSPS Alumni in the World

(as of May 2023)

<b>Asia</b> 23 countries & regions	Bangladesh	215	Bhutan	45	Brunei	4	Cambodia	123	China	223	India	79
	Indonesia	578	Japan	2,108	Laos	52	Malaysia	141	Maldives	20	Mongolia	81
	Myanmar	130	Nepal	92	Pakistan	127	Philippines	270	Singapore	10	South Korea	77
	Sri Lanka	109	Taiwan	2	Thailand	209	Timor-Leste	4	Vietnam	189		
<b>Pacific</b> 8 countries	Australia	47	Fiji	12	New Zealand	1	Papua New Guinea	6	Samoa	1	Solomon	1
	Tonga	5	Vanuatu	1								
<b>North America</b> 2 countries	Canada	1	U.S.A.	3								
<b>Latin America</b> 17 countries	Belize	1	Brazil	14	Chile	5	Colombia	8	Costa Rica	4	Cuba	1
	Dominican Republic	6	Ecuador	7	El Salvador	27	Guatemala	4	Haiti	1	Jamaica	2
	Mexico	3	Nicaragua	16	Paraguay	4	Peru	20	Venezuela	3		
<b>Europe</b> (including NIS countries) 31 countries	Albania	3	Armenia	2	Azerbaijan	8	Bulgaria	13	Croatia	1	Czech	15
	France	1	Georgia	13	Germany	5	Greece	1	Hungary	16	Iceland	1
	Italy	2	Kazakhstan	56	Kyrgyz Republic	68	Latvia	1	Lithuania	2	Moldova	2
	Netherlands	3	North Macedonia	2	Poland	27	Romania	14	Russia	1	Serbia	2
	Slovakia	7	Spain	1	Switzerland	2	Tajikistan	16	Turkmenistan	8	Ukraine	7
	Uzbekistan	113										
<b>Middle East</b> 7 countries	Afghanistan	14	Iran	3	Jordan	1	Saudi Arabia	2	Syria	2	Turkey	16
	Yemen	2										
<b>Africa</b> 33 countries	Algeria	8	Botswana	5	Burundi	1	Cameroon	3	Cote d'Ivoire	3	DR Congo	1
	Egypt	17	Eritrea	2	Ethiopia	43	Gambia	1	Ghana	59	Guinea	1
	Kenya	45	Lesotho	1	Liberia	3	Madagascar	3	Malawi	7	Mauritius	5
	Morocco	1	Mozambique	3	Namibia	3	Nigeria	4	Rwanda	5	Sierra Leone	8
	Somalia	1	South Africa	1	South Sudan	1	Sudan	3	Tanzania	48	Tunisia	1
	Uganda	47	Zambia	32	Zimbabwe	30						

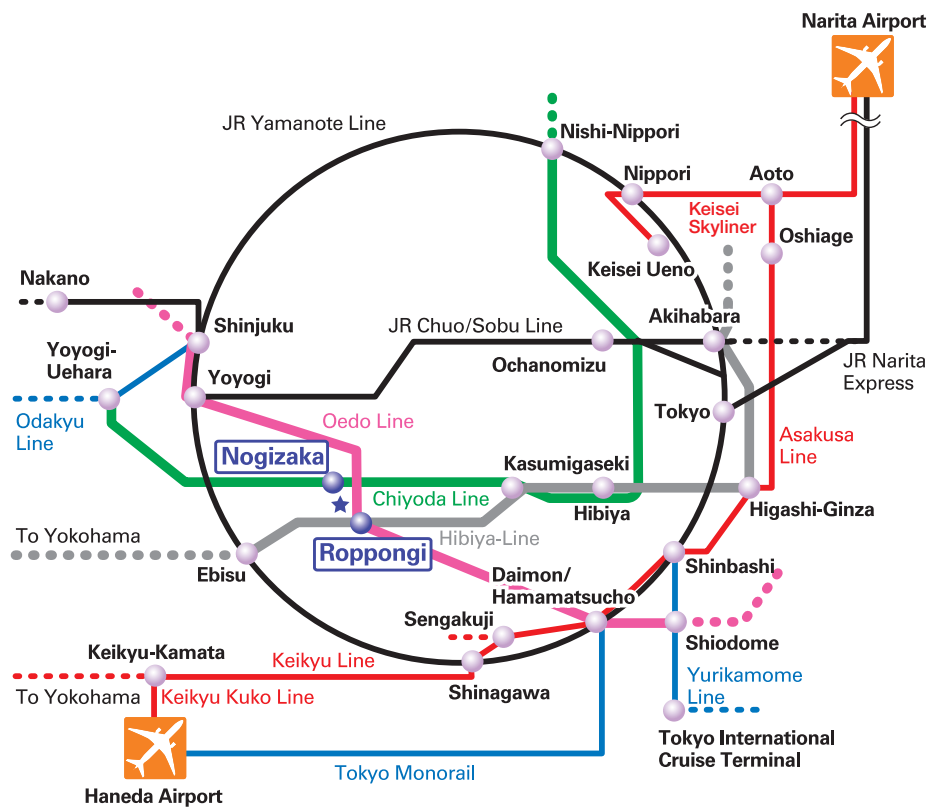
Total number of countries and regions: 121 Total number of alumni: 5,941



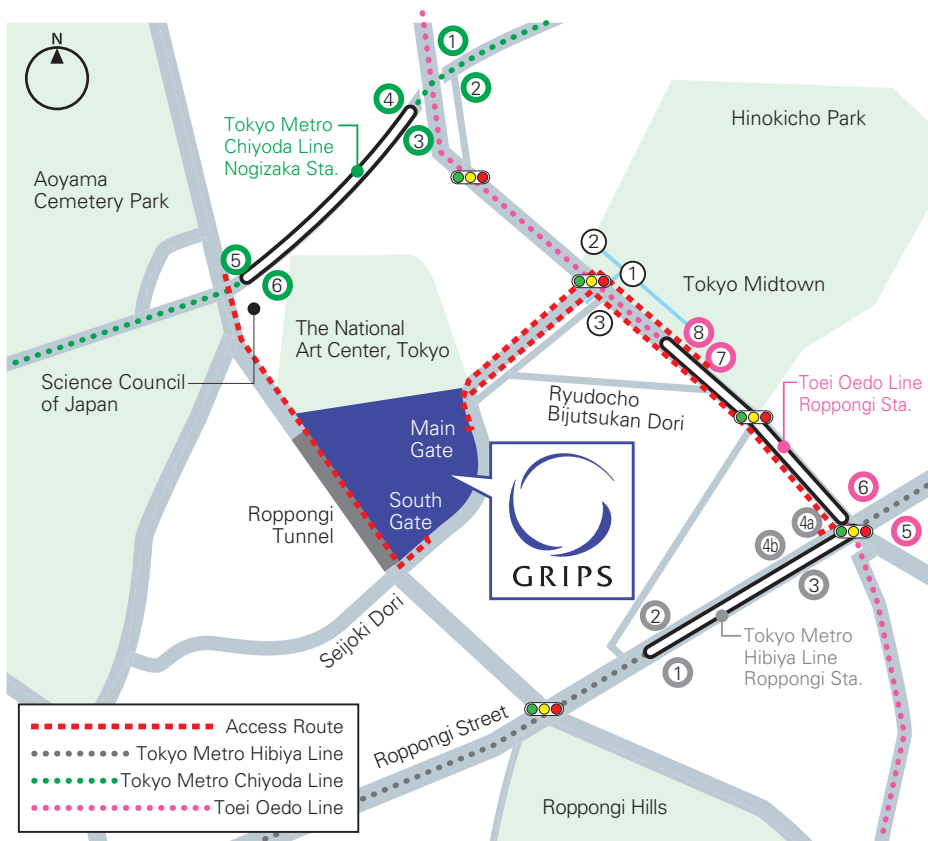
# History of GRIPS

GRIPS	GSPS
	 <p>Old Campus in Saitama (GSPS)</p> <p>Center for Behavioral Science and Data Analysis, Saitama University established, 1973</p> <p>Graduate School of Policy Science (GSPS), Saitama University established, 1977</p> <p>Public Policy Program for domestic students launched, 1977</p> <p>International Program launched, 1984</p> <p>International Development Program launched, 1991</p> <p>International Monetary Fund (IMF) Program launched, 1993</p> <p>Tax Program launched.</p>
1997	National Graduate Institute for Policy Studies (GRIPS) established. Policy Research Center and GRIPS Library established.
1998	
1999	GRIPS relocated to Shinjuku Wakamatsu-cho campus. Policy Information Center established.
2000	Launch of four domestic programs: Public Policy, Development Policy, Regional Policy, and Cultural Policy. Launch of four international programs: Public Policy, Transitional Economy, International Development Studies, and Public Finance.
2001	Young Leaders Program (School of Government) and Graduate Program in Japanese Language and Culture (Master's) launched.
2002	First intake of doctoral students
	 <p>Shinjuku Wakamatsu-cho campus</p>
2003	Center for Study of International Development Strategies established. Graduate Program in Japanese Language and Culture (Ph.D.) launched.
2004	Transition to national university corporation status Intellectual Property Program launched. Science and Technology Policy Program (Ph.D.) launched.
2005	GRIPS relocated to newly built campus in Roppongi, Tokyo. Earthquake Disaster Mitigation Program launched.
2006	Institute for Comparative Studies in Local Governance established. Security and International Studies Program launched.
2007	Policy Professionals Program launched. Economics, Planning and Public Policy Program launched. Disaster Management Policy Program (formerly Earthquake Disaster Mitigation Program) launched.
2008	Public Policy Program (Ph.D.) launched. Policy Analysis Program launched. Urban Policy Program launched.
2009	Young Leaders Program (School of Local Governance) launched. Education Policy Program launched.
2010	One-year Master's Program of Public Policy (MP1) (formerly Public Policy Program) launched. Two-year Master's Program of Public Policy (MP2) (formerly Public Policy Program) launched. Asian Economic Policy Program (formerly Transition Economy Program) launched. Disaster Management Program launched.
2011	Macroeconomic Policy Program (formerly Asian Economics Policy Program) launched.
2012	Disaster Risk Management Program launched. Science, Technology and Innovation Policy Program (Ph.D.) launched.
2013	GRIPS ALLIANCE established. Executive Development Center for Global Leadership established. State Building and Economic Development Program launched. Science, Technology and Innovation Policy Program (Master's) launched.
2014	Science for RE-designing Science, Technology and Innovation Policy Center (SciREX) established. GRIPS Global Governance Program (G-cube) launched.
2015	Center for Professional Communication established. Maritime Safety and Security Policy Program launched.
2016	GRIPS Fund established. Strategic Studies Program launched. Launch of Public Policy Program (Master's) (Regional Policy Concentration, Educational Policy Concentration, Infrastructure Policy Concentration, Disaster Risk Management Concentration, Health Care Policy Concentration, Agricultural Policy Concentration, Regional Development and Finance Concentration).
2017	Public Policy Program (Master's) (Cultural Policy Concentration) and Global Studies Course (Master's) launched.
2018	Public Policy Program (Master's) (Science, Technology and Innovation Policy Concentration) launched.
2019	Public Policy Program (Master's) (Open Concentration) launched.
2020	Public Policy Program (Master's) (International Cooperation Concentration) launched. Global Leadership Development Program launched.
2021	
2022	Center for Data Science established.
	 <p>Roppongi Campus</p>

Access



From Narita Airport to Roppongi via Tokyo by Narita Express: 1 hour 30 minutes  
From Narita Airport to Roppongi via Nippori by Skyliner: 1 hour 15 minutes  
From Haneda Airport to Roppongi by Tokyo Monorail: 40 minutes  
From Tokyo to Roppongi: 17 minutes



From exit no. 7 at Roppongi station on the Toei Oedo Line: 5 minutes walk  
From exit no. 4a at Roppongi station on the Tokyo Metro Hibiya Line: 10 minutes walk  
From exit no. 5 at Nogizaka station on the Tokyo Metro Chiyoda Line: 6 minutes walk

National Graduate Institute for Policy Studies (GRIPS)

7-22-1 Roppongi, Minato-ku, Tokyo, 106-8677, Japan

TEL:+81-3-6439-6000 (Reception) FAX:+81-3-6439-6030 (Reception)

[www.grips.ac.jp/en/](http://www.grips.ac.jp/en/)

Facebook: [www.facebook.com/grips.tokyo/](https://www.facebook.com/grips.tokyo/)

Twitter: [twitter.com/GRIPS\\_Info](https://twitter.com/GRIPS_Info)

YouTube: [www.youtube.com/user/GRIPSJAPAN](https://www.youtube.com/user/GRIPSJAPAN)

GRIPS Admissions Office

[admissions@grips.ac.jp](mailto:admissions@grips.ac.jp) [www.grips.ac.jp/en/admissions/index](http://www.grips.ac.jp/en/admissions/index)

Published: August 2023

Editing / Publication: PR team, General Affairs Division, GRIPS

Design: Satoshi Ando (pickles design)

#### Photo Copyrights

Architectural photos (cover background and front cover bottom left):

Masao Nishikawa

Photo of Roppongi Campus (P. 28): Kudo Photo

Other Photos: GRIPS

