

Japan-WCO Human Resource Development Programme

# Public Finance Program Customs Course



政策研究大学院大学  
NATIONAL GRADUATE INSTITUTE  
FOR POLICY STUDIES





## **Contents**

<b>1</b>	<b>Program Description .....</b>	<b>1</b>
<b>2</b>	<b>About GRIPS .....</b>	<b>11</b>
<b>3</b>	<b>Student Support .....</b>	<b>13</b>
<b>4</b>	<b>Admissions .....</b>	<b>15</b>
<b>5</b>	<b>Alumni .....</b>	<b>16</b>

Address and Contact Information



### Overview and Program Objectives

Since 2000, the Customs Course at GRIPS (as part of the Public Finance Master's Degree program) has cultivated promising customs officials. The major objective of the Public Finance Program is to provide students with the conceptual understanding and technical competence to become leaders in the area of taxation and customs. The curriculum is designed for government officials from developing countries, who currently work in customs or tax administration. The program is a 13-month course comprised of two segments: an academic segment common to customs and tax students, and a practicum segment that is conducted separately for customs and tax depending on the student's stream/concentration.

#### Public Finance Program

**Tax Course**

**Customs Course**

Degree offered : Master of Public Finance

### Academic Segment

The academic segment provides a rigorous economics-oriented education aimed at developing a broad understanding of the theoretical, empirical, and institutional aspects of customs/tax policy implementation and administration, in the context of developing countries economic and social development. The academic segment culminates in the writing of a master's thesis facilitated by a course in which students develop their thesis with the input of academic supervisors and their peers, in which they have several opportunities to present their research.

### Practicum Segment

The practicum segment of the Customs Course is provided by Japan's Customs Training Institute (CTI: WCO Regional Training Centre), Customs and Tariff Bureau of the Ministry of Finance. It involves workshops and seminars, and field trips to regional customs bureaus. These experiences give students opportunities to enhance their learning on practical, administrative, legal, and institutional issues, thus integrating practical experience with their formal learning.





## Outline of the Curriculum

### September Program

One academic year at GRIPS is composed of four terms: fall (16 weeks), winter (8 weeks), spring (16 weeks), and summer (8 weeks). Although the formal academic term starts in October, students in the Customs Course are invited to arrive in early September, and attend supplementary classes to brush up on their basic mathematical and statistical skills, which will help them grasp the micro-foundations of economics and the basis for empirical analysis. They also attend classes on basic Japanese, and special five-day program as part of the practicum in Customs Administration.

### Schedule for September-October 2021

September		
Week 1	Sep. 6 Sep. 9	<ul style="list-style-type: none"> <li>•Arrival in Japan</li> <li>•Welcome party sponsored by WCO</li> <li>•Campus tour, program-wide guidance</li> </ul>
Week 2		<ul style="list-style-type: none"> <li>•Japanese language class</li> <li>•Mathematics for Economics</li> </ul>
Week 3-4		<ul style="list-style-type: none"> <li>•Mathematics for Economics</li> <li>•Courtesy visit to the Director-General of the Customs and Tariff Bureau at the Ministry of Finance, Japan</li> </ul>
October		
Week 5	Oct. 1 Oct. 4-5  Oct. 6	<ul style="list-style-type: none"> <li>•Move into student residence</li> <li>•Entrance ceremony, school-wide orientation</li> <li>•Administrative formalities at GRIPS</li> <li>•Health check-up, Roppongi town tour, school-wide welcome party</li> <li>•Fall term classes commence</li> </ul>





---

### Formal Academic Program

The formal academic segment of the master's program begins in October. It starts with focused teaching of foundational skills in micro- and macroeconomics as well as quantitative analysis. It then moves to a range of applied topics which help students understand how to design, implement, and evaluate public policies -- customs policy in particular -- in accordance with development strategies. Topics include public finance, international economics, development economics, human resource management, customs laws, and tax laws. See the list of course offerings and the flow chart for the 2021-2022 on the following pages.

In addition to the required and strongly recommended elective courses, students can choose freely throughout the year from any of the extensive list of courses offered at GRIPS. Along with economics courses, GRIPS also offers numerous courses in various academic areas that are conducted in English. These range from public administration, political science, international relations, mathematical science, data science, and social engineering, to a diverse range of interdisciplinary fields. Students can also choose to enroll in the Japanese language courses offered throughout the year at various levels of proficiency, although credits earned in these courses cannot count towards the degree.

### Practicum Program

The main part of the practicum starts in the winter term. It involves seminars and workshops that cover the theory and practice of international trade, as well as customs policy and administration. It also involves visits to regional customs bureaus, and final preparations for student papers that are presented to, and discussed with CTI teaching staff.

### Master's Thesis

There is one required course, Thesis Seminar, that students must enroll from fall through summer term, which are devoted to producing the master's thesis (or "policy paper") on a topic related to public finance. In this course, students are provided with personal instruction in an intimate environment by a faculty advisor, and several opportunities to present both their ongoing and completed research papers. Students are supported in the writing process by mandatory Policy Proposal Writing and Thesis and Policy Proposal Writing courses, as well as through individual consultation with faculty members of the GRIPS Center for Professional Communication.





## Academic Year 2021-2022

		Course No.	Course Name	Term	Credit
I Required Courses		PFP2500E	Customs Law	Fall	2
		PFP5110E	Practicum in Customs Administration I	Winter through Spring	2
		PFP5120E	Practicum in Customs Administration II	Fall (September), Winter, Spring	2
		PFP5130E	Practicum in Customs Administration III	Fall (September), Spring	4
		PFP5210E	Intellectual Property Rights Enforcement at the Border	Spring (Session I)	2
		ECO1000EB	Microeconomics I	Fall (Session I)	2
		ECO3102E	Public Finance I	Winter	2
		ECO4120E	Thesis Seminar	Fall through Summer	4
		ECO4130E	Tutorial (PF)	Fall	1
		GEN5020E	The World and the SDGs	Fall	1
III Elective Courses	Highly Recommended	ECO1060EA	Macroeconomics I	Fall (Session I)	2
		ECO2000EB	Microeconomics II	Fall (Session II)	2
		ECO2020EB	Government and Market	Winter	2
		ECO2720EB	Introduction to Applied Econometrics	Fall	2
		ECO3103E	Public Finance II	Spring (Session I)	2
		ECO3110E	Fiscal Reform in Japan	Winter	2
		ECO3120E	Public Finance and Fiscal Policy	Fall	2
		ECO3130E	Economics of Tax Policy	Winter	2
		ECO3160E	Reform of Economic Policy in Japan	Spring	2
		ECO3400E	International Trade	Spring (Session I)	2
		ECO3840EB	Development Economics	Winter	2
		PAD2560E	Human Resources Management	Spring	2
		ECO1600E	Monetary Economics (Money and Banking)	Fall	2
		ECO2060EA	Macroeconomics II	Fall (Session II)	2
		ECO2610E	Finance and Economic Growth	Spring(Session II)	2
		ECO2760E	Applied Time Series Analysis for Macroeconomics	Winter	2
		ECO2770E	Applied Econometrics	Winter	2
		ECO2780E	Applied Econometrics Practice	Winter	2
		ECO3000E	Mathematics for Economic Analysis	Fall	2
		ECO3200E	Economics of Law	Spring	2
		ECO3710E	Time Series Analysis	Spring (Session I)	2
		PAD2670E	Public Expenditure Management	Fall	2
		MOR1030E	Introduction to Data Science	Fall(Session I)	2
		MOR2020E	Data Science in Practice	Fall (Session II)	2
		REG2100E	Local Government System and Finance	Fall	2
			*Selected Topics in Policy Studies I - IV		
			Courses not listed in this table		
X Others			**Courses offered by the Center for Professional Communication		

### Notes:

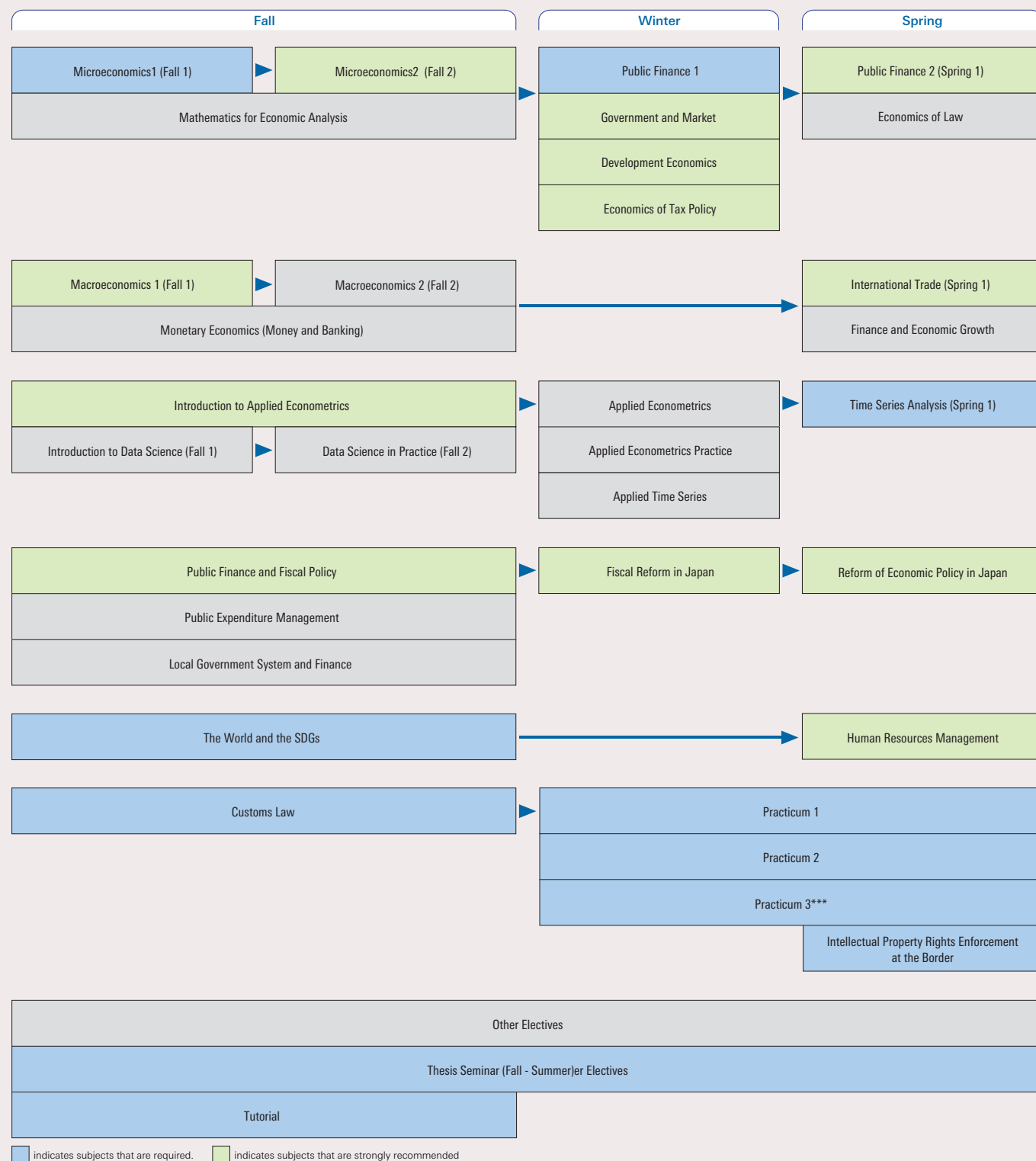
1. Graduation Requirements: Students must complete a minimum of 36 credits and meet the following requirements:  
Customs students must complete the following courses: PFP2500E, PFP5110E, PFP5120E, PFP5130E, PFP5210E, ECO1000EB, ECO3102E, ECO4120E, ECO4130E and GEN5020E from Category I.
2. Courses offered in the Program are subject to change.
3. Students cannot take courses conducted in Japanese without Director's approval. If a student takes the same course in both English and Japanese, only one course (2 credits) will count toward the degree.
4. \*Course Number, Instructor, and Term for these courses will be announced later when the course is offered.
5. \*\*Credits earned in these courses cannot count toward the degree.

## Degree Requirements

- The curriculum is comprised of two course categories: required courses and elective courses. In the elective courses,we have identified 12 courses that are highly recommended.
- Students in the Customs Course must complete a minimum of 36 credits, 22 of which are made up of required courses.
- Besides the minimum credit requirements stated above, students must complete and obtain approval for a master's thesis.



## Flow Chart for Core and Other Major Elective Courses





---

## **Brief Core Course Descriptions (Academic Segment)**

*Followings are for category I and Highly Recommended Courses only. For other courses, see <http://www.grips.ac.jp/en/education/information/syllabus/>*

### **Public Finance I**

In this course, students will learn both expenditure side and revenue side analyses of public finance theory. Topics include impact of public debt, sustainability, public capital and growth, public goods, taxation and efficiency/income distribution, amongst others.

### **The World and the SDGs**

The sustainable development goals (SDGs) adopted by the United Nations General Assembly in September 2015 present challenges that we all have to face, both globally and locally. GRIPS students are expected to play leadership roles in their respective careers, and naturally they are required to have a sophisticated understanding of the urgent but complex nature of the challenges that the SDGs present. To that end, this course, mandatory for all GRIPS students, offers an introductory overview of the state of the world in the 21st century through an examination of the historical development of the world system within the global eco-geological setting, and provides basic knowledge of the social, economic, political and ecological issues that are now being targeted by the SDGs. The world is so complex and as the SDGs cover a broad spectrum of issues, so no single course is sufficient for examination of all the important issues. However, for an understanding of the inter-related nature of the SDGs, it is useful to have a brief overview of the prospects of the SDGs and of the attendant difficulties. Throughout their participation in this course, the students are expected to think and re-think their major research focus at GRIPS within the wide perspective embodied in the SDGs.

### **Microeconomics I**

This is an introductory course on microeconomics. It covers basic economic assumptions and concepts used to define behaviors of consumers and producers in the market. The course consists of three parts: consumer theory, producer theory and the equilibrium in a competitive market. In the consumer theory, preference, utility, budget constraints, utility maximization and demand curves will be introduced. In the producer theory, production and cost functions, profit maximization, and supply curves will be discussed. Finally, the concept and the determination of the equilibrium will be analyzed.

### **Microeconomics II**

Based on certain understanding of materials taught in Microeconomics I, this course expands the basic framework. This course covers various market structure such as monopoly, oligopoly, and monopsony using the framework of game theory. Then course also introduces several cases where the market fails to achieve efficiency and how to address those market failures.



---

### **Macroeconomics I**

This is a first course in the macroeconomics sequence. The course will cover broad topics relating to major macroeconomic variables; eg. money supply, inflation, unemployment, economic growth. Given that these variables can be changed over time and different across countries, we will use simple macroeconomic models to illustrate the underlying mechanism behind the change and difference. The focus of this course is on the long-run equilibrium.

### **Introduction to Applied Econometrics**

This course helps students to understand applied econometric methods and to foster the skills needed to plan and execute their own empirical projects in economics. Topics include ordinary least squares estimation, panel data and fixed effects estimation, instrument variable estimation, difference-in-differences, and regression assessment. We study many examples and STATA package for actual estimation and application.

### **Government and Market**

The objective of this course is to acquire an in-depth understanding of the economic roles of government in a modern market-based society. We seek to understand what governments should do (or should not do), what should be left to the market and to private individuals, and what would be the consequences of government policies. This course will help you to apply the principles and knowledge of microeconomics to current policy issues.

### **Fiscal Reform in Japan**

This course covers current problems related to Japan's public finance policy and the necessary reforms to address those problems. The main topics are the factors of financial deterioration, past fiscal consolidation plans, and important systems related to fiscal structure, such as the social security system, local public finance, and public loan programs. In particular, reform of the social security system, including the medical insurance and pension systems, is important for fiscal consolidation in the scenario of rapid population aging. For completeness, taxation reform in response to globalization and population aging is also discussed.

### **Public Finance and Fiscal Policy**

Lectures will be given on several topics that may serve for some as one of the options for their policy papers. Those topics include some countermeasures against tax avoidance, treaty shopping and tax strategy, taxpayers' right and dispute resolution mechanism, etc. They are discussed not only in the context of Japan but also in the context of some other major countries. Some relevant court cases and tax tribunal decisions are also used for analyzing those countermeasures and mechanism.



---

### **Reform of Economic Policy in Japan**

This course covers issues related to the formulation of economic policy. The main topics discussed include the current state of the Japanese economy and its weaknesses. Japan's economy has three major weaknesses: lagging in globalization, low productivity in the service sector, and inflexibility in the labor market. Knowledge of Japan's economic structural reforms towards increased productivity and labor market reform will be useful to many Asian countries which are experiencing or will experience rapid population ageing. Also under discussion will be the role of government from the view point of economic growth.

### **International Trade**

This course introduces the basic concepts, tools and information required for an understanding of the flow of goods across countries, i.e. international trade. We will investigate why nations trade, what they trade, and who gains from international trade. We will also analyze countries' motives for regulating international trade and the effect of regulatory policies on economic welfare.

### **Development Economics**

This course aims to familiarize students with development problems and issues that are fundamental to developing countries.

### **Human Resources Management**

Knowledge of Human Resource Management (HRM) has become critically important for the managers of public sector organizations. By working within a framework of academic analysis and through the practical experience of the instructor, students are expected to acquire managerial expertise and a practical sense of how public sector organizations are reformed.

### **Economics of Tax Policy**

In this course, the students will acquire an in-depth understanding of the principles of taxation and the economics tools for analysis of tax systems and policy. The overall goal of this course is that the students will be able apply these principles and tools to work with current tax policy issues and fundamental policy reform options.

## **Brief Core Course Descriptions (Practicum Segment)**

### **Customs Law**

This course will first discuss Customs-related activities of WTO. Thereafter, the course will cover various topics on Customs related international instruments which constitute an integral part of Customs related laws, such as WTO Trade Facilitation Agreement (TFA), Revised Kyoto Convention (RKC). The course will also take up trade facilitation initiatives of UN/CEFACT and other relevant organizations and then discuss dispute settlement mechanism, including that of WTO.

### **Practicum in Customs Administration I**

This course will first discuss tariff system and tariff policy. Thereafter, the course will discuss a wide range of tariff and valuation related issues including HS Convention, WTO Customs Valuation Agreement, WTO Agreement on Rules of Origin, WTO Anti-Dumping Agreement.



---

### **Practicum in Customs Administration II**

Knowing about policy and role of the World Customs Organization (WCO) and its tools is essential for managing Customs administration. WCO sets strategic management and four packages, namely Revenue Package, Economic Competitiveness Package (ECP), Compliance and Enforcement Package (CEP) and Organizational Development Package (ODP) as the framework of its activities. Four packages include various tools and instruments including Risk Management Compendium, Safe Framework of Standards (SAFE FOS), Authorized Economic Operator (AEO), Time Release Study and other Performance Measurement tools and others. This course provides the background and outline of the WCO activities and its tools including how member's apply these tools effectively.

### **Practicum in Customs Administration III**

This course aims to provide students with necessary knowledge of Customs reform and modernization, in terms of both theoretical and practical aspects, and problem-solving skills needed for strategic planning. The focus is thus placed on how a given knowledge can be applied to improve the effectiveness and efficiency of their own Customs Administrations. As generally recognized that a holistic approach is the key to successful reform and modernization, students are expected to deepen their understanding of essential components of Customs missions by referring to international standards and good practices of Japan Customs. Lectures include reviews and more practical aspects of areas which have already been taught in the Customs Laws, the Practicum in Customs Administration I and II.

### **Intellectual Property Rights Enforcement at the Border**

Customs administrations are in the position to play a pivotal role in enforcing regulations regarding IPR infringing goods, given the fact that trade in such goods often involves cross-border transactions. IPR is one of the key issues discussed in various forums (e.g., WTO, WCO APEC, etc.), and customs administrations worldwide are expected to undertake appropriate measures. This course, consisting of classroom lectures and various field visits, aims to facilitate the students' consideration of a model of IPR border enforcement for their own customs administrations, through study of international practices of IPR border enforcement in Japan. The course also guides students towards a strong understanding of related matters such as individual IPR laws and IP rights holders' activities.





## Academic Calendar for 2021-2022

Term	Month	SUN	MON	TUE	WED	THU	FRI	SAT	Note
Fall	OCTOBER						1	2	
		3	4	5	6	7	8	9	Oct. 4 - 5 Entrance Guidance and Orientation
		10	11	12	13	14	15	16	Oct. 4 - 18 Registration for Fall Term & Fall (Session I)
		17	18	19	20	21	22	23	Oct. 6 Classes for Fall Term & Fall (Session I) begin
		24	25	26	27	28	29	30	Oct. 19 - 25 Withdrawal for Fall Term & Fall (Session I)
	NOVEMBER	31	1	2	3	4	5	6	
		7	8	9	10	11	12	13	
		14	15	16	17	18	19	20	
		21	22	23	24	25	26	27	
		28	29	30	1	2	3	4	Nov. 29 - Dec. 13 Registration for Fall (Session II)
	DECEMBER	5	6	7	8	9	10	11	Dec. 1 Classes for Fall (Session II) begin
		12	13	14	15	16	17	18	Dec. 14 - 16 Withdrawal for Fall (Session II)
		19	20	21	22	23	24	25	
		26	27	28	29	30	31	1	Dec. 29 - Jan. 3 New Year holidays
	JANUARY	2	3	4	5	6	7	8	
		9	10	11	12	13	14	15	
		16	17	18	19	20	21	22	
		23	24	25	26	27	28	29	
		30	31	*1	*2	3	4	5	Feb. 1 - 14 Registration for Winter Term [*Interterm Period: Feb. 1 - 2]
Winter	FEBRUARY	6	7	8	9	10	11	12	Feb. 3 Classes for Winter Term begin
		13	14	15	16	17	18	19	
		20	21	22	23	24	25	26	
		27	28	1	2	3	4	5	Mar. 2 Grade release (Fall Term)
		6	7	8	9	10	11	12	
	MARCH	13	14	15	16	17	18	19	Mar. 24 Graduation Ceremony for domestic programs
		20	21	22	23	24	25	26	[*Interterm Period: Mar. 31 - Apr. 1]
Spring	APRIL	27	28	29	30	*31	*1	2	Apr. 4 Entrance Guidance for domestic programs
		3	4	5	6	7	8	9	Apr. 4 - 18 Registration for Spring Term & Spring (Session I)
		10	11	12	13	14	15	16	Apr. 5 Classes for Spring Term & Spring (Session I) begin
		17	18	19	20	21	22	23	Apr. 19 - 25 Withdrawal for Spring Term & Spring (Session I)
		24	25	26	27	28	29	30	Apr. 28 Grade release (Winter Term)
	MAY	1	2	3	4	5	6	7	
		8	9	10	11	12	13	14	
		15	16	17	18	19	20	21	
		22	23	24	25	26	27	28	
		29	30	31	1	2	3	4	
	JUNE	5	6	7	8	9	10	11	Jun. 6 - 16 Registration for Spring (Session II)
		12	13	14	15	16	17	18	Jun. 6 Classes for Spring (Session II) begin
		19	20	21	22	23	24	25	Jun. 17 - 21 Withdrawal for Spring (Session II)
		26	27	28	29	30	1	2	
		3	4	5	6	7	8	9	
Summer	AUGUST	10	11	12	13	14	15	16	
		17	18	19	20	21	22	23	
		24	25	26	27	28	29	30	
		31	1	2	3	4	5	6	Aug. 2 - 15 Registration for Summer Term
		7	8	9	10	11	12	13	Aug. 5 Classes for Summer Term begin
	SEPTEMBER	14	15	16	17	18	19	20	
		21	22	23	24	25	26	27	Aug. 31 Grade release (Spring & Summer Terms)
		28	29	30	31	1	2	3	
		4	5	6	7	8	9	10	Sep. 7 Faculty Meeting for Judgment (tentative)
		11	12	13	14	15	16	17	Sep. 14 Graduation Ceremony
		18	19	20	21	22	23	24	[*Interterm Period: Sep. 30]
		25	26	27	28	29	*30		

Course Registration (Please note that schedules are subject to change.)

Registration
  Withdrawal
  No class (Sundays, National Holidays, and New Year Holidays)



# 2 About GRIPS

---

## Message from the Dean

GRIPS was founded in 1997 as a stand-alone national graduate university focusing on policy studies. Future policy leaders and policy researchers from around the world gather here, making GRIPS an international hub for public policy research and education.

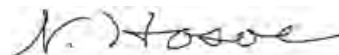
We offer Master's and Doctoral programs covering a broad range of areas, from economics, political science, public administration, and international relations to social engineering and mathematical science, and we encourage students and faculty to engage in interdisciplinary research.

GRIPS has a very international character in every respect, with more than two thirds of our students coming from overseas, from over 110 nations to date. Our faculty is also international and includes academics, public officials, and executives from private companies. The diverse backgrounds of our faculty create an ideal environment for students pursuing policy studies.

Reflecting the diverse backgrounds of our students and faculty, GRIPS aspires for cross-fertilization of academic disciplines and their application to real policy making and policy analysis. We welcome young people from all over the world to come to GRIPS to learn more about Japan and to engage in productive communication with each other. GRIPS' mission is to train and educate young, talented people to become national leaders with a genuine sense of social responsibility.

The Public Finance Program is an integral part of this mission. I hope you will join us.

*Dean and Vice President*  
**Nobuhiro Hosoe**





---

## GRIPS at a glance

The educational mandate of GRIPS is to cultivate high-level policy professionals and researchers. Our degree programs are designed to train students to envision a wide range of solutions to various policy issues.

<b>OUR MISSION</b>	<ul style="list-style-type: none"><li>• Cultivate future leaders in policymaking</li><li>• Serve as an international center for policy research</li></ul>
<b>STUDENT LIFE</b>	<ul style="list-style-type: none"><li>• Numerous scholarships available</li><li>• Spacious campus located in the heart of Tokyo (Roppongi)</li><li>• Modern &amp; comfortable dormitories</li><li>• Global community and network (about 60 countries)</li><li>• Field trips and various cultural programs offered</li></ul>
<b>ACADEMIC</b>	<ul style="list-style-type: none"><li>• 1- and 2-year master's programs</li><li>• Integrated 5-year doctorate programs</li><li>• Various doctorate programs</li><li>• Distinguished faculty</li><li>• Classes taught fully in English</li></ul>
<b>FUTURE CAREERS</b>	<ul style="list-style-type: none"><li>• Policy-making career tracks (government official, private sector, international organizations, academia, etc.)</li><li>• Active alumni for international networking</li></ul>

## Programs offered at GRIPS for international students

For details, visit: [http://www.grips.ac.jp/en/education/inter\\_programs/](http://www.grips.ac.jp/en/education/inter_programs/)

## Brief History of GRIPS

**1977** Graduate School of Policy Science (GSPS) established at Saitama University; the predecessor of GRIPS

**1997** National Graduate Institute for Policy Studies (GRIPS) established

**1999** Relocated to Wakamatsu-cho campus in Tokyo (Shinjuku)

**2005** Relocated to current campus in Roppongi





# 3 Student Support

One unique aspect of GRIPS is our extensive support system for assisting students in their daily living. We consider this aspect of your lives to be every bit as important as your academic life, especially for foreign scholars unfamiliar with Japan. As international students have comprised, on average, about 60% of the GRIPS student body over the last 20 years, we have developed comprehensive services to assist students in their day-to-day living.

The Student Office organizes orientation programs for incoming students and assists arriving international students in getting organized and settled in Japan. It also organizes a number of social events and activities, including field trips and concerts. The Student Office also functions as a hub to promote meaningful interaction and understanding between Japanese and foreign nationals.

## Faculty

GRIPS boasts a nearly 200-member faculty from a variety of backgrounds. Many of them hold doctorate degree from outside of Japan, and many have served as central and local government officials, diplomats, bankers or business executives. This enables an effective combination of rigorous academic courses complemented by professional expertise and experience.

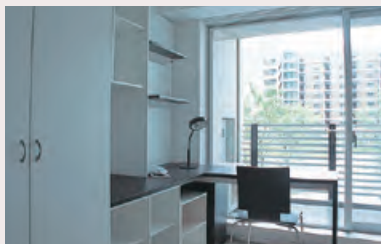
For more on our faculty members, please see <http://www.grips.ac.jp/en/about/directory/>

## Accommodation

Accommodation is provided in the Tokyo International Exchange Center (TIEC), operated by the Japan Student Services Organization (JASSO), in GRIPS International House, or in private apartments recommended by the GRIPS Student Office.

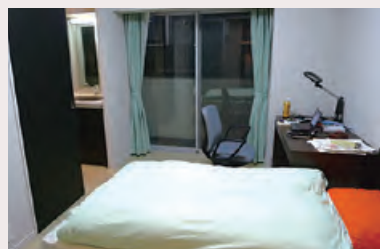
### Tokyo Academic Park Residence Halls

In the bayside area, built in 2001 by the Ministry of Education, Culture, Sports, Science and Technology (MEXT)  
Room Types: Single, Couple, Family



### GRIPS International House I

In Nakano, built in 2009  
Room Types: Single, Couple



### GRIPS International House II

In Nakano, built in 2009  
Room Types: Single, Couple





## Resources

### Center for Professional Communication

The mission of the Center for Professional Communication is to support GRIPS students, faculty, and staff in developing effective professional



communication skills and competencies needed to communicate productively in an environment of multiple stakeholders. To this end, we offer a range of instruction and support

in fundamental areas of professional communication in English and Japanese, including policy paper writing, professional speaking, grant proposal writing, and digital communications. We also provide opportunities for cultural and academic exchanges through a self-access learning center, organize seminars and special events related to all aspects of professional communication, and prepare customized materials for students and staff on academic and professional writing and language learning.

### Library

- Extensive collection of publications in the field of policy studies, collected from around the world
- Collection contains over 190,000 volumes, including reference books, statistical collections, working papers, and government documents
- Large collections of periodicals that include more than 12,000 journals, many of which are available online
- Well-trained staff are equipped to respond to research-related requests



## Facilities

### Student Rooms and IT Support Center

- Each student is provided with a study space, accessible 24 hours a day
- A computer help desk is open to all students during regular working hours



### Health Services Center

- In-house health clinic
- Nurse on duty daily, doctor available several days a week
- Provides medical advice, basic medical examinations
- Will refer to an appropriate hospital or specialist when necessary



### Gym

- Running machines and training equipment
- Showers and washing machines
- Free use by students, faculty, and staff



### Tea Ceremony room

### Prayer room



# 4 Admissions

Each year the Secretary General of the WCO invites nominations from a select number of WCO member customs administrations. Although the number of admissions is limited, the program may also admit students who obtain another source of funding (i.e other than WCO scholarships), including scholarships provided by the student's home country.



## Eligibility Criteria

Before you apply for GRIPS, please carefully read the full description of eligibility criteria on the Public Finance Program web page at [http://www.grips.ac.jp/en/education/inter\\_programs/finance/](http://www.grips.ac.jp/en/education/inter_programs/finance/). Details of WCO scholarships are also available on that page.

Irrespective of the funding source, to be eligible for admission to the Public Finance Program (Customs Course), the applicant must meet the following criteria:

1. Have a bachelor's degree or its equivalent from a recognized, accredited university of the highest standard.
2. Be proficient in English (admission priority will be given to applicants who have a TOEFL iBT score of 79 or higher, or an IELTS Academic score of 6.0 or higher).
3. Be an active government official in a developing country, with at least 2 years' work experience in customs policy and administration in the home country at the time of enrollment, and preferably below 35 years of age as of April 1st in the year of enrollment. Preference will be given to those who show promise of continuing their career in customs policy and administration upon returning to their home countries.

## For Those Seeking a WCO Scholarship

Those seeking a WCO scholarship must first apply for admission to GRIPS.

GRIPS will make a short list of candidates and send it to the WCO for the final selection.

Additional Criteria for WCO Scholarship	Scholarship Coverage
<ul style="list-style-type: none"><li>• Be a national of an eligible developing country member of the WCO</li><li>• Be chosen and nominated by their Customs Administration</li><li>• Have never before been awarded a scholarship under the Japan-WCO Human Resource Development Programme</li></ul>	<ul style="list-style-type: none"><li>• Monthly stipend: JPY147,000.</li><li>• Application fee, admission fee, and tuition</li><li>• An economy-class air ticket from your home country to Japan upon enrollment at GRIPS and an economy-class air ticket from Japan to your home country upon completion of your studies at GRIPS</li><li>• Book allowance: JPY75,000</li><li>• Arrival allowance: JPY25,000</li><li>• Return allowance: JPY25,000</li></ul>
For full description, please refer to the Public Finance Program web page at <a href="http://www.grips.ac.jp/en/education/inter_programs/finance/">http://www.grips.ac.jp/en/education/inter_programs/finance/</a>	

## How to Apply

We accept applications for the Public Finance Program (Customs Course) online at the GRIPS website. The online entry deadline is February 25, 2022, 17:00 (JST), and the online application deadline is March 4, 2022, 17:00 (JST). For details, please refer to the Admissions web page at <http://www.grips.ac.jp/en/admissions/index/>



# 5 Alumni

---

One of the greatest resources and joys of studying at GRIPS is the diversity of the student community. The connections you make at GRIPS are a valuable part of your degree. The GRIPS Alumni Network will ensure they are lifetime bonds by keeping you in touch with fellow alumni and the school.

As a GRIPS graduate, you join an impressive network of around 5,400 alumni who are actively shaping future policies in more than 115 countries around the world. We offer a variety of ways to remain engaged with GRIPS and strengthen your ties with fellow alumni. These include alumni reunions, seminars, a searchable alumni directory and online networking opportunities utilizing social media such as Facebook and LinkedIn.

## **Alumni of the Public Finance Program (Customs Course)**

Since its launch in 2000, two hundred and fifteen(215) students have graduated from the Public Finance Program's Customs Course with Master's degree (as of September 2021). All were mid-career customs officials when first admitted into the program. The majority of WCO scholars who graduate return to their home countries and pursue careers in the field of customs.







### **Dashgin Aliyev (Azerbaijan, 2009)**

**Current Position:** Regional Development Manager for the WCO Europe region

**Affiliation:** World Customs Organization

Currently I am holding a position of a Regional Development Manager in the WCO Secretariat, in charge of coordination of the capacity building activities and support to the development of Customs Administrations, in the biggest region of the WCO. Back in 2008 I was honored, as a first customs officer from my Customs Administration, to be awarded a scholarship for the Public Finance Programme at GRIPS. The Public Finance Program provides a fantastic opportunity that any customs officers may desire, to develop conceptual understanding and technical competence in Customs and related topics. The curriculum is specifically designed for customs officials and GRIPS does not stop to keep it up-to-date by continuously reviewing it in the light of the emerging trends and considering of what students actually need to study to add value to their service in Customs. From my own experience I can tell what an immense role the Programme, which is aiming at academic and career growth of its students, played in my career growth. After I returned to my Customs Administration, I served for 3 years, as per the requirement of the Programme, and in 2012 joined the WCO Career Development Program to undertake work at the WCO Secretariat for 10 months. This career path continued with the position of Customs Attaché in the Embassy of Azerbaijan to Belgium, and later on secondment to the WCO Secretariat, where currently I am functioning as a Regional Development Manager. During my time at the Secretariat, I have observed that GRIPS graduates always have comparative advantages when they apply to WCO fellowship, career development and other programs. The practical knowledge and experience gain at GRIPS helped me a lot in my job at the WCO, with a smooth transition and immediate report for duty. I heartily welcome all prospective students and sure that your enrollment in the program will be a big step toward the next stage in your career development.

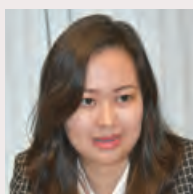


### **Tsendsuren Davaa (Mongolia, 2011)**

**Current Position:** Senior State Customs Officer of International Cooperation Division

**Affiliation:** Customs General Administration of Mongolia

I had selected the Customs Course in the Public Finance Program at GRIPS (WCO – Japan CCF Scholarship) in 2010/2011 Academic year. It was one of the most memorable moment of my educational and social life enriching my personal experiences. The Public Finance Program enhanced my knowledge of economic and statistical principles that affected the performance of Mongolian Customs. The educational program empowered me to improve my analytical skills, particularly my ability to use socioeconomic and statistical methods. Besides academic lectures, the degree program also included the study of best practices and visits to Japan Customs to experience real-time field operations. After completion of my Master's Degree Program, I felt that I had strengthened my skills as a data analyst. On my return to Mongolian Customs, I was promoted to the post of Deputy Director of the Customs Control and Risk Management Department. After completion of my Master's Degree in Japan, I continued my research work in Mongolia and received my Ph.D. of Business Administration in 2015 from the Mongolian National University. My Master's thesis primarily concerned about Customs Risk Management, so Ph.D. thesis based on it. I would like to state that, without comprehensive economic and Customs knowledge which I gained from the GRIPS, it would have been difficult to study in a Doctorate. Therefore, I am grateful for the opportunities it has afforded me. Also, I would like to express my sincere thanks to the GRIPS which motivated and encouraged my further career development.



### **Lazzat Daniyarova (Kazakhstan, 2016)**

**Current position:** Senior Expert, Risk Management Unit,

**Affiliation:** State Revenue Committee, Ministry of Finance, Republic of Kazakhstan

When I commenced my studies at GRIPS I was only 23 years old Customs officer having 2 years of experience and yet GRIPS and WCO believed in me and gave me the chance to learn and explore so many things, so I could return as another person with a wide expertise in Customs matters. That one year in Japan was full of experiences from academic and professional angles. When I continued my work with Kazakhstan Customs I was promoted to the Senior Expert of the Risk Management Unit. Thanks to my obtained Degree and knowledge, in 2018 I was accepted as a Professional Associate assigned to Compliance and Facilitation Directorate of the World Customs Organization under the sponsorship of Japan Customs. While working for the WCO I was directly involved in organization of major meetings also as a speaker and a moderator, including Permanent Technical Committee, Trade Facilitation Working Group, and finally the IT/TI Conference.



### **Hector Kenzo Horiuti Kitahara (Brazil, 2018)**

**Current Position:** Deputy Director

**Affiliation:** São Paulo Customs

During the Public Finance Program, students learn the economic impacts of Public Policies, while learning the latest trends and best practices from WCO and Japan Customs. This skillset is extremely useful for making decisions based on evidence and economic principles, very important traits to having high impact as Customs Policy Makers when going back to our countries.

During the Program, you will grow not only at a professional level, but also at a personal level. GRIPS staff works very hard to make our life as comfortable as possible during the study period. This Program has definitely been the best experience I have had in my life, and I cherish all the friends I have made during my stay in Japan!



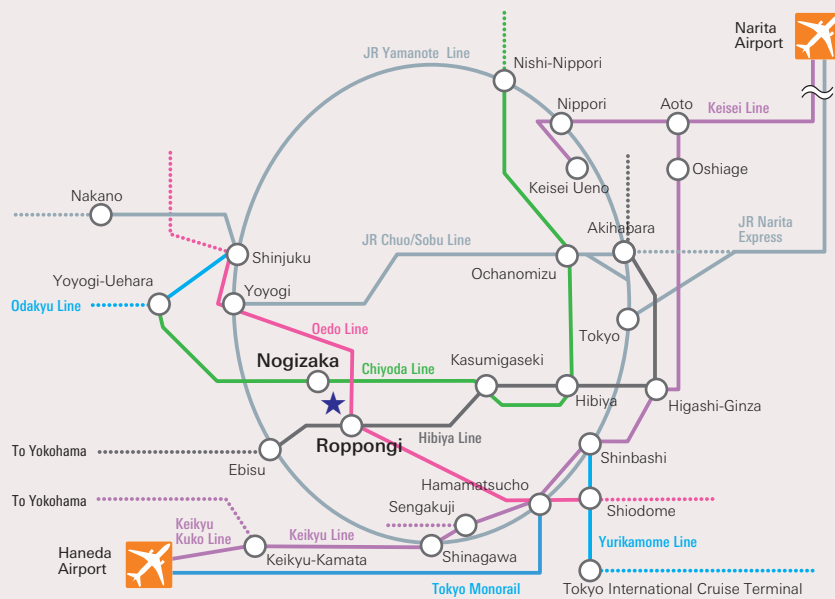
## Address and Contact Information

### Getting to GRIPS

The GRIPS building is located in the center of Tokyo, conveniently accessible by public transport. Both Nogizaka Station on the Chiyoda Line and Roppongi Station on the Oedo and Hibiya Lines are within 10 minutes walking distance.



Roppongi Hills



### National Graduate Institute for Policy Studies

7-22-1 Roppongi, Minato-ku, Tokyo 106-8677 Japan

Tel: +81-(0)3-6439-6000 Fax: +81-(0)3-6439-6010

<http://www.grips.ac.jp>

### Admissions Office

[admissions@grips.ac.jp](mailto:admissions@grips.ac.jp)



Gateway to  
Global Leadership