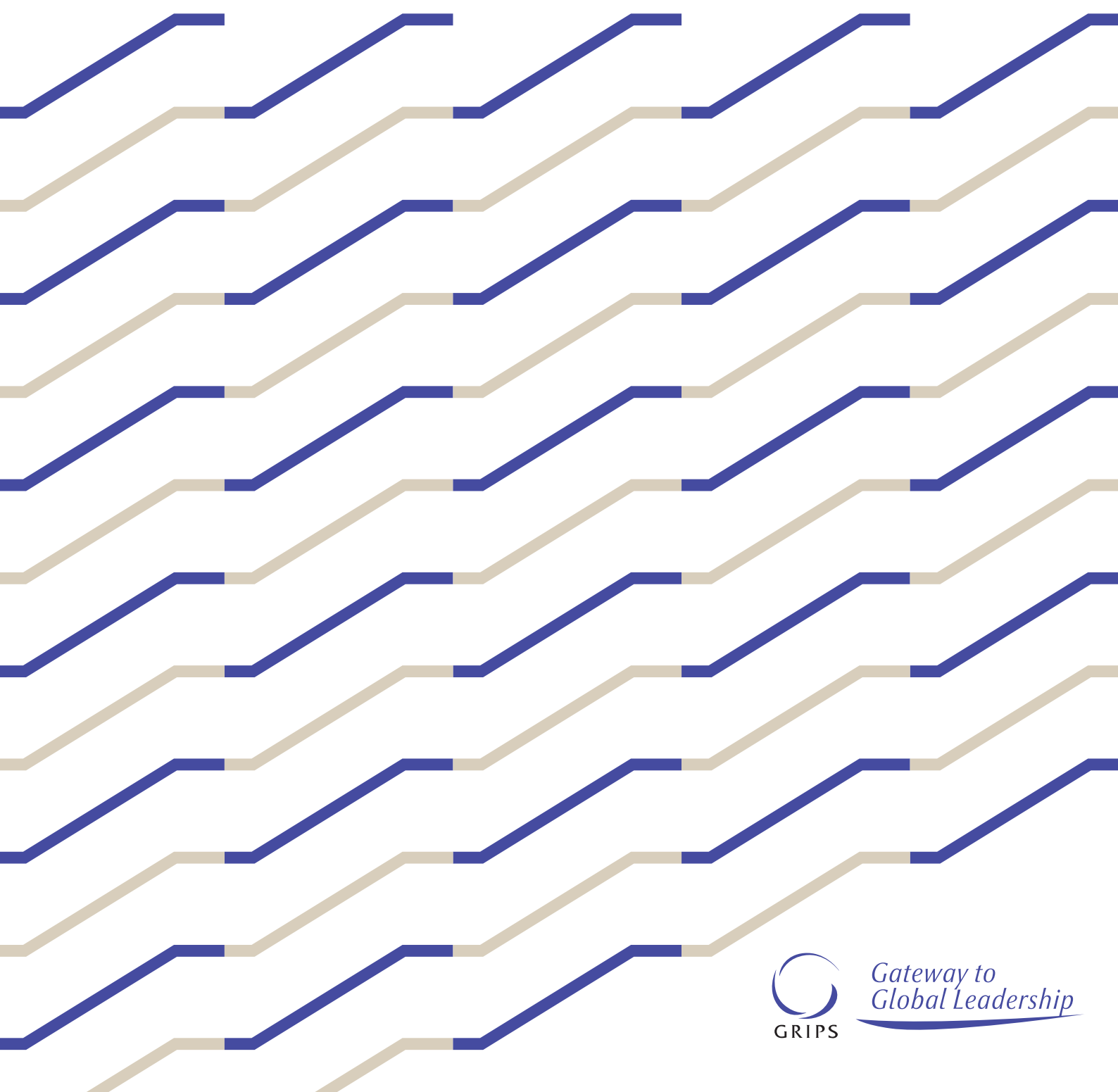


NATIONAL GRADUATE INSTITUTE
FOR POLICY STUDIES

GRIPS 2019–2020



*Gateway to
Global Leadership*

Message from the President

The National Graduate Institute for Policy Studies (GRIPS), a graduate school established in 1997, aims to contribute to the development and advancement of democratic governance both in Japan and abroad through research and education in governmental policy and policy reform. Since its inception as the Graduate School of Policy Science at Saitama University in 1977, GRIPS has conducted policy research relevant to the current affairs of Japan and the world and has provided graduate education in advanced policy studies designed primarily for mid-career administrative and government officials from Japan and overseas, mainly from developing countries. At GRIPS we place particular emphasis on education for our international students; many of our degree programs can be obtained through study entirely in English.

GRIPS endeavors to produce young policy-makers who can tackle problems faced by countries, cities, international organizations, companies, and civil society at large. To that end, graduate education at GRIPS focuses on the fundamentals of policy research as well as practical problem-solving. Students benefit from high-quality instruction in economics, political science, public administration, international relations, engineering, and other subjects. They also have the opportunity to acquire a valuable set of data science skills. Leveraging GRIPS' location in Japan, we have formed our curriculum around the examination of selected case studies reflecting the experiences of Japan and other Asian countries related to modernization, rapid economic growth, and disaster management.

GRIPS' current policy on education, research and management is strongly linked to the Sustainable Development Goals (SDGs) adopted by the United Nations General Assembly in 2015. Our curriculum highlights the 17 goals of the SDGs: we work to raise awareness and knowledge of the SDGs amongst our students—many of whom will go on to become future leaders of their countries. I am also keen on encouraging research that will contribute to the achievement of the SDGs.

Currently, international students make up 60% of our student population. Even by global standards, we are a particularly international research and education institution. In this environment, international students have the opportunity to engage in friendly competition among themselves and with the people who will lead Japan in the future. On the other hand, our Japanese students have the chance to create bonds with those who will go on to be future leaders in their home countries around the globe.

In this global atmosphere, we particularly welcome Japanese applicants to the English program. We also place strong emphasis on improving the English of the students in the Japanese program, and encourage them to participate in classes conducted in English. We also provide English classes and other learning opportunities at the Center for Professional Communication (CPC). For international students, the CPC provides Japanese classes and other learning opportunities, notably through the center's programs for rich exposure to elements of Japanese culture.

GRIPS is centrally located in Tokyo and has extensive access to the Japanese government and its agencies and to other major stakeholders. This proximity allows our students to observe important Japanese policymaking action closely as they conduct their research.

In addition to high-quality graduate education, we offer training programs that meet the needs of various stakeholders including the government agencies of a wide array of countries; we also accept funded research that draws on our faculty's expertise.

The world in the 21st century faces a great number of urgent issues that require action on both national and international scales. These issues, reflected in the SDGs, impact on areas including economic development, security, the environment, population, equality, and technological progress. GRIPS will continue to conduct research addressing these issues, and to nurture policy professionals who are motivated and equipped to take on global challenges.

Akihiko Tanaka
President

Profile

Akihiko Tanaka obtained his Ph.D. in political science from the Massachusetts Institute of Technology in 1981 and has held various positions at the University of Tokyo, including Professor of International Politics, Director of the Institute of Oriental Culture, and Executive Vice-President. He served as President of the Japan International Cooperation Agency (JICA) from April, 2012, to September, 2015. Professor Tanaka's academic specialties include theories of international politics, development cooperation, contemporary international relations in East Asia, and Japanese foreign policy. In 2012, he received the Medal of Honor with Purple Ribbon (*shiju hōshō*) for his academic achievements. In April 2017, Professor Tanaka became President of GRIPS.



Contents

Message from the President.....	1
Goals and Features.....	3
Facts and Figures	4
Programs Outline	5
Executive Development Center for Global Leadership	6
Center for Professional Communication.....	7
Research Activities / Library	8
Student Support and and Alumni Network.....	9
Admissions	10
Degree Programs	11
Master's Programs	
Young Leaders Program	12
One-year Master's Program of Public Policy (MP1).....	13
Two-year Master's Program of Public Policy (MP2).....	14
Macroeconomic Policy Program	15
Public Finance Program	16
Economics, Planning and Public Policy Program	17
Disaster Management Policy Program	18
Maritime Safety and Security Policy Program.....	19
5-Year Ph.D. Program	
Policy Analysis Program.....	20
3-Year Ph.D. Programs	
Public Policy Program	21
GRIPS Global Governance Program (G-cube)	22
Security and International Studies Program.....	24
State Building and Economic Development Program	25
Disaster Management Program.....	26
Science, Technology and Innovation Policy Program.....	27
GRIPS ALLIANCE	28
Access	29

The GRIPS Logo

The GRIPS logo design consists of three arcs, formed by six curved lines following a Japanese katana (sword) motif, slicing in toward the center and representing our mission to carve out the future based on historical experience. The arcs represent various independent ideas emerging and blending into a vibrant constellation, while the clear space in the center represents an infinite number of possibilities. The logo uses purple because of that color's association with intelligence and dignity.



Goals and Features

Goals

The National Graduate Institute for Policy Studies (GRIPS) aims to contribute to the betterment and advancement of democratic governance around the world through research and education on policy issues and innovative solutions.

■ Training of Policy Professionals and Researchers

The central goal of GRIPS is to cultivate future leaders with the ability to identify challenges in public policy and to offer diverse and innovative solutions. GRIPS works toward this goal by providing an opportunity for students to gain expert knowledge of and a creative perspective on policy planning.

■ Promotion of Interdisciplinary Policy Studies

Going beyond the students' specific fields, GRIPS fosters their ability to develop wide-ranging solutions to policy-related challenges and to take an interdisciplinary approach to the resolution of real issues.

■ Serving as an International Center for Policy Research

In order to offer world-class programs, GRIPS maintains innovativeness in both its research and its education systems, in an environment that meets international standards.

In addition to its leadership in establishing world-class policy studies and academic disciplines, GRIPS also maintains a platform for the provision of well-timed recommendations regarding current policy issues.

Features

In order to achieve these goals, GRIPS offers exceptional research and training opportunities in a system characterized by the features listed below.

■ Independent postgraduate university

The university is committed to providing graduate programs dedicated purely to policy studies.

■ Research environment with a global perspective

The GRIPS research environment includes an extensive network of global experts including international faculty members and researchers.

■ Internationally-competitive research based on modern social science methodology

The comprehensive research program at GRIPS encompasses studies on policy evaluation methodology and its applications to the analysis of policy decisions.

■ Training of world-class public policy professionals

GRIPS offers policy researchers comprehensive five-year consecutive master's-doctoral programs using modern social science methodology.

■ Specialized training for public policy professionals

GRIPS' focus on the training and professional upgrading of early career professionals (e.g., public administrators and policy analysts) concentrates on the enhancement of the students' policy planning capability.

■ Learning opportunities for professionals and a well-structured curriculum

Contemporary policy issues are addressed in the well-structured GRIPS curriculum for both domestic and international professionals (bachelor's

and master's graduates) from government ministries and agencies, municipalities, government-affiliated agencies, and the private and research sectors.

■ Comprehensive programs offered solely in English

Foreign students comprise two thirds of total enrollment.

■ A wide range of scholarships

Comprehensive scholarships are available to foreign students through international institutions such as the International Monetary Fund, the World Bank and the Asian Development Bank. There are also scholarships for foreign/domestic students who aim to become researchers. As well, a variety of in-school part-time employment opportunities are available.

■ Dynamic and diverse instructional environment

GRIPS faculty include top-level researchers, administrators and industry professionals with extensive expertise. The tenure system and the program of visiting faculty appointments attract high-achieving public policy professionals from around the world and ensure a dynamic and diverse instructional environment.

■ Collaboration and partnership with other institutions

At GRIPS, government-academia collaboration in policy studies supports robust interaction between international organizations and the policy research bodies of Japanese government ministries and agencies, and municipalities.



Old Campus in Saitama (GSPS)



Old Campus in Wakamatsu-Cho, Shinjuku



Roppongi Campus

Brief History of GRIPS

- 1977** Graduate School of Policy Science (GSPS), Saitama University established
- 1997** National Graduate Institute for Policy Studies (GRIPS) established
- 1998** GRIPS relocated to campus in Shinjuku Wakamatsu-cho, Tokyo
- 2000** First master's degree conferred
- 2003** First Ph.D. conferred
- 2004** Transition to national university corporation
- 2005** GRIPS relocated to newly built campus in Roppongi, Tokyo
- 2013** GRIPS ALLIANCE established
- 2016** GRIPS Fund established

Number of Students by Country and Region

(as of May 2019)

Asia 19 countries & regions	Bangladesh	17	Cambodia	4	China	4	India	7	Indonesia	36	Japan	108
	Republic of Korea	6	Laos	4	Malaysia	8	Maldives	1	Mongolia	4	Myanmar	8
	Nepal	7	Pakistan	10	Philippines	26	Sri Lanka	9	Thailand	12	Viet Nam	18
	Taiwan	1										
Pacific 1 country	Australia	1										
North America 1 country	U.S.A.	2										
Latin America 5 countries	Chile	2	Colombia	2	Ecuador	1	Nicaragua	1	Peru	1		
Europe (including NIS countries) 8 countries	Bulgaria	1	France	1	Germany	1	Iceland	1	Kazakhstan	2	Poland	2
	Slovakia	1	Uzbekistan	7								
Middle East 1 country	Turkey	2										
Africa 11 countries	Eritrea	1	Ethiopia	8	Ghana	5	Kenya	2	Liberia	1	Malawi	1
	Sierra Leone	1	Tanzania	2	Uganda	2	Zambia	1	Zimbabwe	2		

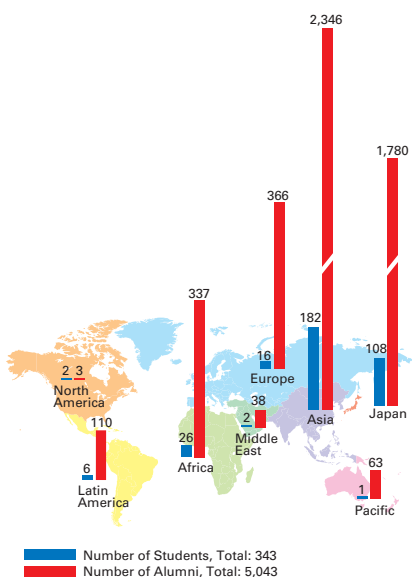
Total number of countries and regions: 46 Total number of students: 343

GRIPS/GSPS Alumni in the World

(as of May 2019)

Asia 23 countries & regions	Bangladesh	172	Bhutan	33	Brunei	3	Cambodia	110	China	220	India	63
	Indonesia	480	Japan	1,780	Republic of Korea	67	Laos	39	Malaysia	123	Maldives	15
	Mongolia	76	Myanmar	112	Nepal	81	Pakistan	100	Philippines	208	Singapore	8
	Sri Lanka	79	Thailand	180	Timor-Leste	2	Viet Nam	173	Taiwan	2		
Pacific 6 countries	Australia	43	Fiji	11	New Zealand	1	Papua New Guinea	6	Samoa	1	Vanuatu	1
North America 2 countries	U.S.A.	2	Canada	1								
Latin America 17 countries	Belize	1	Brazil	10	Chile	3	Colombia	7	Costa Rica	2	Cuba	1
	Dominican Republic	6	Ecuador	6	El Salvador	22	Guatemala	4	Haiti	1	Jamaica	2
	Mexico	3	Nicaragua	16	Paraguay	4	Peru	19	Venezuela	3		
Europe (including NIS countries) 30 countries	Albania	3	Armenia	2	Azerbaijan	7	Bulgaria	12	Croatia	1	Czech Republic	12
	Georgia	13	Germany	5	Greece	1	Hungary	14	Iceland	1	Italy	2
	Kazakhstan	48	Kyrgyz Republic	64	Latvia	1	Lithuania	2	North Macedonia	2	Moldova	2
	Netherlands	3	Poland	22	Romania	13	Russia	1	Serbia	2	Slovakia	6
	Spain	1	Switzerland	2	Tajikistan	16	Turkmenistan	6	Ukraine	7	Uzbekistan	95
Middle East 7 countries	Afghanistan	13	Iran	3	Jordan	1	Saudi Arabia	2	Syria	2	Turkey	15
	Yemen	2										
Africa 31 countries	Algeria	7	Botswana	2	Burundi	1	Cameroon	3	DR Congo	1	Cote d'Ivoire	3
	Egypt	17	Ethiopia	37	Eritrea	1	Ghana	46	Guinea	1	Kenya	39
	Lesotho	1	Liberia	2	Madagascar	3	Malawi	4	Mauritius	3	Morocco	1
	Mozambique	3	Namibia	1	Nigeria	4	Rwanda	5	Sierra Leone	5	Republic of South Africa	1
	South Sudan	1	Sudan	3	Tanzania	45	Tunisia	1	Uganda	40	Zambia	30
	Zimbabwe	25										

Total number of countries and regions: 116 Total number of alumni: 5,043



Programs Outline

Teaching methods: Lecture, seminar, and tutorial

Assessment: Written examinations and term papers

Terms: 4-term calendar (16-week Fall Term, 8-week Winter Term, 16-week Spring Term, 8-week Summer Term)

Extracurricular: Japanese language classes are provided for international students who wish to study Japanese during their time at GRIPS

The educational mandate of GRIPS is to cultivate high-level policy professionals and researchers. Our degree programs are designed to train students to envision a wide range of solutions to various policy issues.

GRIPS currently offers 12 master's programs (8 of which are taught in English), 1 integrated 5-year master's and doctorate program, and 7 doctoral programs (6 of which are taught in English). Our degree programs combine broad disciplinary curricula with an applied research focus and foster a commitment to international, national, and regional policy issues. This multifaceted approach provides the basis for a comprehensive understanding of economic development and socio-political change. We update our courses and develop new ones on the basis of ongoing policy research and changing policy issues. The programs at GRIPS are demanding and require a high level of commitment from students.

Master's Programs —International Programs

- Young Leaders Program
- One-year Master's Program of Public Policy (MP1)
- Two-year Master's Program of Public Policy (MP2)
- Macroeconomic Policy Program
- Public Finance Program
- Economics, Planning and Public Policy Program
- Disaster Management Policy Program
- Maritime Safety and Security Policy Program

5-Year Ph.D. Program

- Policy Analysis Program

3-Year Ph.D. Programs

- Public Policy Program
- GRIPS Global Governance Program (G-cube)
- Security and International Studies Program
- State Building and Economic Development Program
- Disaster Management Program
- Science, Technology and Innovation Policy Program

Number of Students per Program

(as of May 2019)

Program	Current Students	Graduated Students	
Master's	Young Leaders Program	29	415
	One-year Master's Program of Public Policy (MP1)	17	583
	Two-year Master's Program of Public Policy (MP2)	10	70
	Macroeconomic Policy Program	22	351
	Public Finance Program	16	270
	Economics, Planning and Public Policy Program	26	231
	Disaster Management Policy Program	18	413
	Maritime Safety and Security Policy Program	9	23
	Graduate Program in Japanese Language and Culture	4	108
	International Development Studies Program	-	314
5-Year Ph.D.	[MA] GRIPS Global Governance Program (G-cube)	1	29
	[Ph.D.] GRIPS Global Governance Program (G-cube)	30	8
	[MA] Policy Analysis Program	4	67
	[Ph.D.] Policy Analysis Program	23	63
3-Year Ph.D.	Public Policy Program	11	58
	Security and International Studies Program	15	17
	State Building and Economic Development Program	12	6
	Disaster Management Program	6	9
	Science, Technology and Innovation Policy Program	10	13
	Graduate Program in Japanese Language and Culture	-	10

This table does not list students in programs conducted in Japanese, except those in the Graduate Program in Japanese Language and Culture.



Executive Development Center for Global Leadership

Website <http://www.grips.ac.jp/g-center/en/>



Director

Masahiro Horie
Professor Emeritus



One of the core missions of the National Graduate Institute for Policy Studies (GRIPS) is to educate and develop public policy leaders and public sector professionals from around the world. Accordingly, in response to requests by foreign government agencies, GRIPS has been offering a wide range of training programs in addition to its regular academic programs (masters and doctoral degrees).

Since its establishment, the Executive Development Center for Global Leadership (CGL) has been providing short-term training programs which meet our mission and needs of public sectors. Each program consists of a wide range of approaches including lectures given by GRIPS professors, site visits, discussions and workshops. From the planning stage, we ask foreign institutions to clarify subjects and issues of their interest as well as the background of the objective in order to build more suitable program. While the need of capacity building for public officials is increasing in Asian countries, we are continuing such programs and shifting to the next stage for more effective programs.

In Addition, we promote exchanges and network building with human resource development organizations of both domestic and international public sectors and with support of international organization and JICA, we invite key policy makers to study the experience of Japan to achieve their objectives of development.

» Examples of Specific Short-Term Training Programs by GRIPS

- Training program for vice-minister level officials of the Vietnamese government
- Training program for National Security College, Australian National University
- Public management and leadership training program (PMLTP) for Thai high-potential officials
- Training programs for the King Prajadhipok's Institute (KPI) of Thailand
- Training program for vice-minister level officials of Lao PDR
- Training of trainer: planning and budgeting for BAPPENAS, Republic of Indonesia
- Training program for government executive officials of Bangladesh
- Japan-IMF Macroeconomic Seminar for Asia (JIMS) (About 20 Asian countries)
- Lectures via GRIPS Distance Learning System (DLS)
- Training Program for promising young Taiwanese
- Program especially designed for International students to understand the experience of Japanese Development

» Other activities

- Research project on leadership and management development in Asian countries
- Consulting services regarding human resource development
- Research and studies to enrich the content of training programs
- Support for development of training programs in foreign countries



Director
Katerina Petchko
Professor

Words have the power to move people's minds, transform people's lives, and change the world. Using words effectively is not the product of inspiration; it is the result of knowing how to structure and present information to achieve an intended purpose for a particular audience. The mission of the Center for Professional Communication (CPC) is to support GRIPS' students, faculty, and staff in developing effective professional communication skills and competencies needed to communicate and interact productively in an environment of multiple stakeholders. To this end, we offer a range of instruction, services, and support in fundamental areas of professional communication in English and Japanese. Below are some of the programs and support structures we offer.

- A comprehensive academic writing program that supports the production of policy papers, theses, and dissertations at GRIPS. The program includes regular courses, individual writing consultations, and occasional seminars and special events.
- Programs and courses in professional communication skills (e.g., presentation skills, grant proposal writing, digital communications, policy report writing).
- Seminars, symposia, and special events related to all aspects of professional communication and language learning.
- Editing, proofreading, and language support services for doctoral students, faculty and staff.
- Professional development opportunities for faculty and staff.
- Opportunities and resources for cultural, academic, and special-interest exchanges through a self-access learning center—the CPC Communication Lounge.
- Handbooks, guidebooks, and other materials on academic and professional writing and language learning developed by CPC faculty and customized for students' self-study, guided learning, and research.

The Center's main strength is its outstanding faculty. Our faculty are experts in professional communication, disciplinary writing, and language learning and teaching, with advanced academic training and years of professional experience; many hold doctorates and have a strong record of academic and research accomplishments. Our faculty's expertise encompasses a wide range of areas in economics, political science, law, public policy, education, psychology and applied linguistics. Drawing on extensive scholarship in educational theory and practice, the Center promotes evidence-based curriculum development and instruction, establishes best practices in teaching and learning, and strives to become a recognized center of excellence in Japan and the world.



Policy Research Center

Director: Shigeru Morichi, Adjunct Professor

As the central organization for research activities at GRIPS, the Policy Research Center promotes policy-oriented, project-based joint research mainly through the following three major activities.

First, the Center funds mainly two kinds of research projects every year by calling for proposals from faculty members. The “cutting-edge project” addresses specific policy issues facing the world today, and the “exploratory project” addresses future policy issues. There are currently 14 projects conducted in FY2019 (as of April 1, 2019).

Second, the center runs awards for publications by faculty member in academic books and international journals, and book publication

grant program.

Third, it serves as a platform for research information by gathering and disseminating knowledge and information through holding international conferences and symposia, as well as by publishing discussion papers.

In addition, the Center strengthens interpersonal networks and opportunities for joint research by accepting visiting scholars from around the world.

Website: <http://www.grips.ac.jp/r-center/en/>

Science for Redesigning Science, Technology and Innovation Policy Center (SciREX Center)

Director: Takashi Shiraishi, Adjunct Professor

The Science for Redesigning Science, Technology and Innovation Policy (hereinafter “SciREX”) Center was established in August, 2014, as a hub for various programs of the SciREX Initiative promoted by the Ministry of Education, Culture, Sports, Science and Technology. The aims of the Center are to (1) promote co-evolution of the policy community and the research community by providing opportunities for policymakers, researchers, and other professionals with diverse backgrounds, knowledge, and experience to work together and (2) develop, try out, and put into practice methodologies that contribute to finding solutions to policy issues related to science, technology and

innovation.

To achieve these goals, the Center has launched three research programs, in Policy Design, in Policy Analysis and Assessment, and in the Practical Process of Policy Formation. In collaboration with other related universities and research institutes, the Center conducts various policy-oriented research projects, which aim to contribute to the promotion of evidence-based policy discussion, and effective policy formation and implementation.

Website: <https://scirex.grips.ac.jp/center/en/>

Library

Director: Hozumi Morohosi, Professor

The GRIPS Library offers an extensive collections of publications in the field of policy studies from around the world. The collections contains over 190,000 volumes, including reference books, statistical collections, working papers, and government documents. The Library's large collections of periodicals includes more than 12,000 journals, many of which are available online. To serve our academic community, the Library staff is well trained to respond to research-related requests.

Website: <http://www.grips.ac.jp/main/lib/en/>



Student Support and Alumni Network



Student Support

We understand the challenges international students face when adjusting to a new culture and environment. Accordingly, the Student Office provides substantial assistance to international students so that you can focus on accomplishing your academic goals at GRIPS. The Student Office assists with a variety of matters such as accommodation arrangements, immigration procedures, and international cultural exchanges. International students will be assigned to off-campus accommodations in the Tokyo metropolitan area based on their requests. At GRIPS, the Health Services Center provides medical and psychological counseling services to all students.

Alumni Network

One of the greatest resources and joys of studying at GRIPS is the diversity of the student community. The connections you make at GRIPS are a valuable part of your degree. The GRIPS Alumni Network will ensure they are lifetime bonds by keeping you in touch with fellow alumni and the school.



As a GRIPS graduate, you join an impressive network of well over 5,000 alumni who are actively shaping future policies in 116 countries around the world. Connectivity and communication sit at the heart of the alumni community. We offer a variety of ways to remain engaged with GRIPS and strengthen your ties with fellow alumni around the globe. These include alumni reunions, seminars, a searchable alumni directory and online networking opportunities utilizing social media such as Facebook and LinkedIn.

The Alumnus of the Month (ALMO) feature aims to celebrate some of our outstanding Alumni, while giving past, present, and future students an opportunity to meet some of our graduates. Please check out the ALMO feature on our website.

<http://www.grips.ac.jp/en/alumni/almo/>



Alumni: Atty. Ryan L. Estevez, Philippines; Young Leaders Program, 2011
Undersecretary Presidential Legislative Liaison Office

“When I was accepted as a YLP scholar back in 2010, my life changed, not only because I was able to add a very colorful feather to my education, but also because I was deeply influenced by the Japanese system of education’s purpose - that is, the development of character – the nurturing of the “kokoro” - which has become a very visible brand of my very public service, all thanks to my Japanese alma mater - GRIPS!”



Alumni: Ruamporn Prawatmuang, Thailand; Macroeconomic Policy Program, 2017
Senior analyst, Enterprise Risk Management Department, Bank of Thailand.

“Studying at GRIPS was a totally life-changing experience for me. I studied not only the breadth and depth of economics, but also learned about various perceptions in a multicultural environment. It has broadened my horizons and helped me to develop both hard and soft skills. It is one of the highlights in my life. True to say, all these experiences have been beyond my expectations and truly support my career path to be a leader in the future”

Admissions

Admissions

Admission is competitive and involves careful, holistic consideration of each candidate through both document screening and interviews.

Scholarships

Full scholarships are available for exceptionally qualified candidates who have been accepted for study at GRIPS. These scholarships are provided by the Japanese government (MEXT) and international organizations, as well as by GRIPS.

Tuition & Fees

Application Fee	JPY 30,000
Admission Fee	JPY 282,000
Tuition (per year)	JPY 535,800

Scholarship	Eligible Programs
Japanese Government - YLP-MEXT Scholarship	Young Leaders Program
Japanese Government (MEXT) Scholarship	One-year Master's Program of Public Policy (MP1) Two-year Master's Program of Public Policy (MP2) Policy Analysis Program GRIPS Global Governance Program (G-cube) Security and International Studies Program Science, Technology and Innovation Policy Program
Asian Development Bank-Japan Scholarship Program (ADB-JSP)	One-year Master's Program of Public Policy (MP1) Two-year Master's Program of Public Policy (MP2)
Japan-IMF Scholarship Program for Asia (JISPA)	Macroeconomic Policy Program
Joint Japan/World Bank Graduate Scholarship Program (JJ/WBGSP)	Public Finance Program (Tax Course)
Japan-WCO Human Resource Development Programme (Scholarship Programme)	Public Finance Program (Customs Course)
Indonesian Government Scholarship for Linkage Master's Program	Economics, Planning and Public Policy Program
GRIPS Fellowship	Policy Analysis Program GRIPS Global Governance Program (G-cube) Security and International Studies Program Science, Technology and Innovation Policy Program
JICA/Building Research Institute (BRI)	Disaster Management Policy Program (Seismology, Earthquake Engineering and Tsunami Disaster Mitigation Course)
JICA/Public Works Research Institute (PWRI)	Disaster Management Policy Program (Water-related Disaster Management Course)
JICA	Maritime Safety and Security Policy Program
ICHARM Research Assistantship	Disaster Management Program

Contact

Admissions Office

Please visit our website for full details and the latest information.

<http://www.grips.ac.jp/en/admissions/index/>

Email: admissions@grips.ac.jp

Degree Programs

Master's Programs

- Young Leaders Program
- One-year Master's Program of Public Policy (MP1)
- Two-year Master's Program of Public Policy (MP2)
- Macroeconomic Policy Program
- Public Finance Program
- Economics, Planning and Public Policy Program
- Disaster Management Policy Program
- Maritime Safety and Security Policy Program

5-Year Ph.D. Program

- Policy Analysis Program

3-Year Ph.D. Programs

- Public Policy Program
- GRIPS Global Governance Program (G-cube)
- Security and International Studies Program
- State Building and Economic Development Program
- Disaster Management Program
- Science, Technology and Innovation Policy Program

The sustainable development goals (SDGs) related to each degree program are shown on each page.

17 GOALS TO TRANSFORM OUR WORLD



Please visit the dedicated website, **Knowledge and Research: GRIPS' contribution to the SDGs**, to see the connections between our research and education activities and the SDGs. <http://www.grips.ac.jp/sdgs/en/>

Degrees OfferedMaster of Public Administration, Master of Public Policy
Language of InstructionEnglish
Time ScheduleProgram duration: 1 year Enrollment: October Graduation: September

Related SDGs

Website http://www.grips.ac.jp/en/education/inter_programs/leader/



Kiyotaka Yokomichi
 Director
 Senior Professor



Mikitaka Masuyama
 Deputy Director,
 School of Government
 Professor



Hirofumi Takada
 Deputy Director,
 School of Local Governance
 Professor

Fosters future national leaders in countries in Asia and other regions

Young Leaders Program (YLP) was introduced by the Japanese Ministry of Education, Culture, Sports, Science and Technology in 2001. The objectives of the program are to

1. Foster future national leaders in designated countries
2. Build up comprehensive human networks among the leaders of nations
3. Establish friendly relationships among the countries involved, including Japan
4. Improve the quality of policy making in the participating countries

» TARGET GROUP

This program is open to exceptionally promising young government officials with considerable working experience in the area of public administration. In principle, a minimum of three years' working experience in the field in the applicant's

home country is a prerequisite for admission to the program. Students will be admitted on the basis of an appraisal of their potential to become future leaders at home, to play important roles in their countries' development, and to maintain the lasting friendship and trust of Japan and other countries around the world.

» PROGRAM DESIGN

The curriculum covers a wide range of topics concerning public administration and policy formulation, and also offers the opportunity for intensive discussion with politicians, highlevel government officials, corporate directors, journalists, and other Japanese leaders. The program also includes Field Trip/ Workshop I-II and a final paper based on Independent Study/Research.

Curriculum: School of Government	
Category	Course Name
Required Courses	<ul style="list-style-type: none"> • Introduction to Public Policy Studies • The World and the SDGs • Global Governance: Leadership and Negotiation • Introduction to Japan • Colloquium • Independent Study • Field Trip
Recommended Courses	<ul style="list-style-type: none"> • Microeconomics I • Essential Microeconomics • Contemporary Japanese Economy • Japanese Economy • Economic Development of Japan • Government and Politics in Japan • International Relations • International Political Economy • International Security Studies • Comparative Politics • Structure and Process of Government
Elective Courses	<ul style="list-style-type: none"> • Macroeconomics I • Government and Market • Global Development Agendas and Japan's ODA • Public Economics • International Trade • Japanese Financial System • Development Economics • Japanese Foreign Policy • Social Science Questions and Methodologies • Local Government System • Local Government Finance • Local Governance in the Changing World
Curriculum: School of Local Governance	
Category	Course Name
Required Courses	<ul style="list-style-type: none"> • Introduction to Public Policy Studies • The World and the SDGs • Global Governance: Leadership and Negotiation • Local Government System • Local Government Finance • Local Governance in the Changing World • Introduction to Japan • Colloquium • Research Paper • Workshop I – II
Recommended Courses	<ul style="list-style-type: none"> • Microeconomics I • Essential Microeconomics • Economic Development of Japan • Government and Politics in Japan • International Relations • Structure and Process of Government
Elective Courses	<ul style="list-style-type: none"> • Macroeconomics I • Government and Market • International Trade • Development Economics • East Asian Economies • Japanese Foreign Policy • International Security Studies • Social Science Questions and Methodologies • Social Security System in Japan • Small and Medium Enterprise and Technology • National Land Policy

» CAREER DESTINATIONS

Graduates from the YLP in principle return to their former governmental posts to become leaders in their respective organizations. To name a few:

School of Government

- Director General, Asia Pacific and Africa Department, Ministry of Foreign Affairs (Laos, 2008)
- Ambassador Extraordinary and Plenipotentiary, Ministry of Foreign Affairs, Embassy of Malaysia to the Czech Republic (Malaysia, 2008)
- Deputy Director-General, National Center of Education Development Research, Ministry of Education (China, 2007)

- Advisor to Deputy Minister, Ministry of Finance (Czech Republic, 2007)
- Deputy Minister, Ministry of Finance (Kyrgyz Republic, 2007)
- Director General, State Center for Pension Payments, Ministry of Labor and Social Protection of Population (Kazakhstan, 2005)
- Ambassador, Philippines Embassy, Kingdom of Bahrain (Philippines, 2004)
- Ambassador, Deputy Permanent Representative, Permanent Mission of Indonesia in Geneva, Ministry of Foreign Affairs (Indonesia, 2003)

School of Local Governance

- Director, Directorate of "Angren" Free Economic Zone (Uzbekistan, 2013)
- Governor (Assistant Director), Mounkung Township General Administration Department, Southern Shan State, Ministry of Home Affairs (Myanmar, 2012)
- Director General, Secretariat Training Institute, Islamabad (Pakistan, 2011)
- Director, Training Department, General Department of Administration, Ministry of Interior (Cambodia, 2010)

Degrees OfferedMaster of Public Policy, Master of Public Administration
Language of InstructionEnglish
Time ScheduleProgram duration: 1 year Enrollment: October Graduation: September

Related SDGs

Website http://www.grips.ac.jp/en/education/inter_programs/policy/

1 2 3 4 5 7 8 9 10 11 12 16 17



Makoto Tanaka
 Director
 Professor

Educates mid-career professionals in local or national governments and international organizations in the skills needed for policy analysis and policy management

The One-year Master's Program of Public Policy (MP1) equips mid-career managers and leaders with the fundamental skills and knowledge needed to be effective managers in the public sector. Students develop familiarity with all phases of the policy cycle. They are required to write a policy report as partial fulfillment of the degree of Master of Public Policy or Master of Public Administration.

» TARGET GROUP

The primary target of MP1 consists of mid-career public officials with excellent academic and work credentials, commitment to public service, and with strong managerial and leadership potential. A secondary target consists of individuals with the capacity for and commitment to high-quality public policy research. Applications are invited from officials and staff of national and local governments, as well as other international and domestic organizations concerned with public policy analysis and management.

» PROGRAM DESIGN

The curriculum is made up of an introductory course in policy studies, policy debate seminars and a wide-variety of elective courses. Students acquire more specialized knowledge by selecting courses in one of four concentration areas: Economic Policy, International Development Studies, International Relations, and Public Policy. A wide range of elective courses recommended by each concentration offers students the opportunity to broaden and/or deepen their knowledge. Practical courses are offered by government officials with extensive experience in actual policy formulation and implementation. This combination of academic and practical knowledge is the hallmark of a GRIPS education. MP1 students produce a policy report in one of the four concentration areas. The Policy Debate Seminar I facilitates students' development and exchange of ideas for their policy reports in concentrations of their choice. In the Policy Debate Seminar II, students finalize their study and write up their policy reports with helps of their supervisors.

Curriculum	
Category	Course Name
Required Courses	• Introduction to Public Policy Studies • The World and the SDGs • Policy Debate Seminar I – II
Elective Courses	Economic Policy Concentration • Microeconomics I – II • Macroeconomics I – II • Introduction to Applied Econometrics
	International Development Studies Concentration • Microeconomics I – II • Essential Microeconomics • Macroeconomics I – II • Essential Macroeconomics • Development Economics • Introduction to Applied Econometrics • Strategy for Economic Development • Poverty Alleviation • Trade and Industrial Development • Gender and Development • Government and Market • Resource and Energy Economics • Agricultural Economics • Agricultural Development • Environmental Economics • Cost Benefit Analysis I – II • Structure and Process of Government • Comparative Political Economy • Comparative Development Studies of Asia • Introduction to Quantitative Methods • Comparative Analysis on Science, Technology and Innovation Policy • Introduction to Policy Evaluation
	International Relations Concentration • Institutions in International Relations • International Relations • International Political Economy • Japanese Foreign Policy • International Security Studies • Foreign Policy • Military Operations, Strategy, and Policy • Politics of Global Money and Finance • Transnational Organized Crime and Security • Non-Traditional Security • Topics on International Relations • International Relations in Europe • Development Cooperation Policy • Comparative Development Studies of Asia • Government and Politics in Japan • Comparative Politics • Comparative State Formation • State and Politics in Southeast Asia • State and Politics in Africa • Structure and Process of Government • Political Economy of Modern Japan • Comparative Political Economy
	Public Policy Concentration • Government and Market • Introduction to Applied Econometrics • Trade and Industrial Development • Public Economics • Resource and Energy Economics • Development Economics • International Security Studies • Structure and Process of Government • International Political Economy • Introduction to Quantitative Methods • Introductory Statistics

» CAREER DESTINATIONS

Graduates from MP1 are expected to hold executive positions in national or local government and international organizations, or to be researchers in public policy. To list a few of the graduates' career paths:

- Ministry of Agriculture (Afghanistan)
- Parliament Secretariat (Bangladesh)
- Jahangirnagar University (Bangladesh)
- Ministry of Education (Bhutan)
- National Council of Bhutan (Bhutan)
- Administration of the Council of Ministers (Bulgaria)

- National Institute of Statistics (Cambodia)
- GIZ Deutsche Gesellschaft fuer Internationale (Germany)
- Statistical Service (Ghana)
- Ministry of National Development (Hungary)
- National Development Planning Board (Indonesia)
- Japan International Cooperatin Agency (Japan)
- Hazama Ando Corporation (Japan)
- Agency on Statistics (Kazakhstan)
- National Bank of the Kyrgyz Republic (Kyrgyz Republic)
- National Planning Commission Secretariat (Nepal)

- Embassy of Japan in Nigeria (Nigeria)
- Ministry of Commerce (Pakistan)
- Department of Finance, Bangko Sentral ng Pilipinas (Philippines)
- Department of Justice; City Government of Davao, Cebu City Government (Philippines)
- Central Bank of Thailand (Thailand)
- Ministry of Family and Social Policy (Turkey)
- Central Bank of Uganda (Uganda)
- Ministry of Finance (Viet Nam)

Degrees Offered Master of Arts in Public Policy
Language of Instruction English
Time Schedule Program duration: 2 year Enrollment: October Graduation: September

Related SDGs

Website http://www.grips.ac.jp/en/education/inter_programs/policy2/



Makoto Tanaka
 Director
 Professor

Educates pre- and early-career professionals in local or national governments, international organizations and policy institutes in the technical skills needed to be professional policy analysts

The Two-year Master's Program of Public Policy (MP2) provides early and mid-career professionals and staff members with the technical skills needed to be professional policy analysts. The program provides a strong platform for advanced research (including doctoral studies). Students are required to write a master's thesis as partial fulfillment of the degree of Master of Arts in Public Policy.

» TARGET GROUP

MP2 targets early and mid-career public policy professionals with demonstrated capacity for advanced policy analysis, commitment to public service, and the potential for leadership roles in policy analysis and program management. Applications are invited from officials and staff of national and local governments, as well as universities, think tanks, and other international and domestic organizations concerned with policy analysis and management.

» PROGRAM DESIGN

The program for MP2 has a similar structure to that of the one year program (MP1), but MP2 students receive more advanced training and guidance in the technical and practical skills needed for public policy analysis. In the first year, MP2 students complete a series of required and elective courses. All MP2 students develop a common interdisciplinary and analytical foundation through the required courses, take specialized courses that provide them with strong analytical and quantitative skills, and select from a wide-variety of elective courses. In their second year, students further develop their research skills and utilize them in writing and defending a master's thesis.



Nobuhiro Hosoe
 Associate Director
 Professor

Curriculum	
Category	Course Name
Required Courses	<ul style="list-style-type: none"> • Introduction to Public Policy Studies • The World and the SDGs • Independent Study • Policy Debate Seminar I – II
Elective Courses	Economic Policy Concentration <ul style="list-style-type: none"> • Microeconomics I – II • Macroeconomics I – II • Introduction to Applied Econometrics
	International Development Studies Concentration <ul style="list-style-type: none"> • Microeconomics I – II • Essential Microeconomics • Macroeconomics I – II • Essential Macroeconomics • Development Economics • Introduction to Applied Econometrics • Strategy of Economic Development • Poverty Alleviation • Trade and Industrial Development • Gender and Development • Government and Market • Resource and Energy Economics • Agricultural Economics • Agricultural Development • Environmental Economics • Cost Benefit Analysis I – II • Structure and Process of Government • Comparative Political Economy • Comparative Development Studies of Asia • Introduction to Quantitative Methods • Comparative Analysis on Science, Technology and Innovation Policy • Introduction to Policy Evaluation
	International Relations Concentration <ul style="list-style-type: none"> • Institutions in International Relations • International Relations • International Political Economy • Japanese Foreign Policy • International Security Studies • Foreign Policy • Military Operations, Strategy, and Policy • Politics of Global Money and Finance • Transnational Organized Crime and Security • Non-Traditional Security • Topics on International Relations • International Relations in Europe • Development Cooperation Policy • Comparative Development Studies of Asia • Government and Politics in Japan • Comparative Politics • Comparative State Formation • State and Politics in Southeast Asia • State and Politics in Africa • Structure and Process of Government • Political Economy of Modern Japan • Comparative Political Economy • Introduction to Quantitative Methods • Social Science Questions and Methodologies
	Public Policy Concentration <ul style="list-style-type: none"> • Government and Market • Introduction to Applied Econometrics • Trade and Industrial Development • Public Economics • Resource and Energy Economics • Development Economics • International Security Studies • Structure and Process of Government • International Political Economy • Introduction to Quantitative Methods • Introductory Statistics

» CAREER DESTINATIONS

Graduates from MP2 are expected to hold executive positions in national or local government and international organizations, or to be researchers in public policy. To list a few of the graduates' career paths:

- Ministry of Agriculture (Afghanistan)
- Ministry of Labour & Human Resources (Bhutan)
- National Institute of Statistics (Cambodia)
- Ministry of Foreign Affairs (Colombia)
- Statistical Service (Ghana)
- Ministry of State Secretariat of the Republic of Indonesia (Indonesia)
- Kementerian Pekerjaan Umum (Indonesia)
- The Board of Audit of Japan (Japan)
- National Bank of the Kyrgyz Republic (Kyrgyz Republic)
- Ministry of Science, Technology and Innovation (Malaysia)
- Ministry of Home Affairs (Nepal)
- Embassy of Japan (Nigeria)
- Department of Finance (Philippines)
- Department of the Interior (Philippines)
- Ministry of Public Administration & Home Affairs (Sri Lanka)
- Central Bank of Uganda (Uganda)
- Central Bank of the Republic of Uzbekistan (Uzbekistan)

Degrees Offered Master of Public Policy/Master of Public Economics (One year Program), Master of Arts in Public Economics (Two year Program)

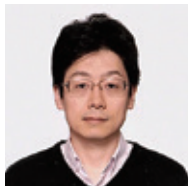
Language of Instruction English

Time Schedule Program duration: 1 year or 2 years Enrollment: October Graduation: September

Related SDGs

Website http://www.grips.ac.jp/en/education/inter_programs/transition/

1 4 8 10



Junichi Fujimoto
Director
Associate Professor



Minchung Hsu
Associate Director
Associate Professor

To train policy makers and professionals using modern macroeconomic theory and policy

The Macroeconomic Policy Program (MEP) is a professionally oriented program designed to train modern macroeconomic policy makers and professionals who need to understand macroeconomic fluctuations and the roles of monetary and fiscal policies in domestic and global economies. The program aims to enhance the capacity of governments to formulate and implement financial and economic policies in a manner that leads to quality growth. The curriculum deals with macroeconomic and structural aspects, including policies aimed at establishing sound macroeconomic fundamentals, liberalized trade, a robust financial system, and a vast private sector. Ample attention is also given to a broader range of issues, such as roles for government, institution building, the environment and sustainable development.

MEP is a program developed from the successful tradition of the Transition Economy Program, which has been a partner of the Japan-IMF Scholarship Program for Asia (JISPA) since the inception of JISPA in 1993.

» TARGET GROUP

The Program is primarily aimed at government officials and professionals who are involved in designing and implementing macroeconomic policies.

» PROGRAM DESIGN

Both one-year and two-year programs are offered. One-year program requires 34 credits for graduation and grants a Master of Public Policy or a Master of Public Economics; Two-year program requires 44 credits and grants a Master of Arts in Public Economics. Qualified candidates who have flexible working schedules, are willing to devote more time to thesis writing, and have a desire to develop more advanced analytical skills may consider the Two-year Program. The coursework consists of required courses, recommended courses, and elective courses. The required courses, which include Macroeconomics, Microeconomics, and Econometrics, provide solid training in principles and theories of economics and develop practical analytical skills for designing and evaluating macroeconomic policies. The variety of recommended and elective courses gives students the chance to further advance their analytical and quantitative skills as well as to develop their specialization in specific areas of interests, such as monetary policy, fiscal policy, international trade, and financial markets. The writing of policy papers (One-year program) / theses (Two-year program) will be closely supervised by experienced core faculty members through seminar courses.

Curriculum: One year Program		Curriculum: Two year Program	
Category	Course Name	Category	Course Name
Required Courses	<ul style="list-style-type: none"> Introduction to Public Policy Studies The World and the SDGs Microeconomics I – II Macroeconomics I – II Introduction to Applied Econometrics International Finance Policy Paper Seminar I – III 	Required Courses	<ul style="list-style-type: none"> Introduction to Public Policy Studies The World and SDGs Microeconomics I – II Macroeconomics I – II Introduction to Applied Econometrics International Finance Thesis Seminar I – IV
Recommended Courses	<ul style="list-style-type: none"> Monetary Economics (Money and Banking) Government and Market Applied Time Series Analysis for Macroeconomics Applied Econometrics Applied Econometrics Practice Strategy for Economic Development Trade and Industrial Development Game Theory Mathematics for Economic Analysis Public Finance Fiscal Reform in Japan Economics of Tax Policy Public Economics Reform of Economic Policy in Japan Economics of Law Competition and Regulatory Economics International Trade Theory and Practice of Central Banking Environmental Economics Resource and Energy Economics Contemporary Japanese Economy Japanese Economy Financial Economics Empirical Finance Japan and the Global Economy I – II Cost Benefit Analysis I – II Economic Modeling for Policy Simulations Development Economics Asian Financial Markets Labor and Health Economics Computer Programming for Economics Politics of Global Money and Finance Accounting and Financial Management I – II Structural Reform and Privatization Modernization of Financial Sector Public Expenditure Management International Development Policy GRIPS Forum Statistics Quantitative Social Systems Analysis East Asian Economies 	Recommended Courses	<ul style="list-style-type: none"> Monetary Economics (Money and Banking) Government and Market Applied Time Series Analysis for Macroeconomics Applied Econometrics Applied Econometrics Practice Strategy for Economic Development Trade and Industrial Development Game Theory Mathematics for Economic Analysis Public Finance Fiscal Reform in Japan Economics of Tax Policy Public Economics Reform of Economic Policy in Japan Economics of Law Competition and Regulatory Economics International Trade Theory and Practice of Central Banking Environmental Economics Resource and Energy Economics Japanese Economy Financial Economics Empirical Finance Japan and the Global Economy I – II Cost Benefit Analysis I – II Economic Modeling for Policy Simulations Development Economics Asian Financial Markets Labor and Health Economics Computer Programming for Economics Politics of Global Money and Finance Accounting and Financial Management I – II Structural Reform and Privatization Public Expenditure Management Modernization of Financial Sector International Development Policy GRIPS Forum Statistics Quantitative Social Systems Analysis East Asian Economies
Elective Courses	<ul style="list-style-type: none"> Advanced Microeconomics I - IV Advanced Macroeconomics I - IV Advanced Econometrics I - IV 	Elective Courses	<ul style="list-style-type: none"> Advanced Microeconomics I – IV Advanced Macroeconomics I – IV Advanced Econometrics I – IV

» CAREER DESTINATIONS

Graduates from MEP are expected to hold key positions as policy makers in government agencies, or research institutes. Below are a few examples:

- Fiscal and Macroeconomic Research Consultant, Ministry of Finance and Treasury (Maldives 2011)
- Deputy Minister, Ministry of Economy of the Kyrgyz Republic (Kyrgyz Republic 2010)
- Director, Balance of Payments Statistics Division, State Administration of Foreign Exchange, China (2003)
- Deputy Minister, Ministry of Finance (Uzbekistan, 2002)
- Deputy Governor, National Bank of Kazakhstan (Kazakhstan, 2001)
- Deputy Director General, Exchange Management Department, National Bank of Cambodia (Cambodia, 2000)
- Advisor to the Speaker, Parliament of Mongolia (Mongolia, 2006)
- Governor, State Bank of Vietnam (SBV) (Viet Nam, 1997)
- Deputy Governor, Bank of the Lao PDR (Laos, 1996)
- Member of the Board of Directors, Chief Investment Officer, AIG Japan Holdings KK (Japan, 2012)

Public Finance Program

Master's Program

Tax course: Joint Japan / World Bank Graduate Scholarship Program

Customs course: Japan-WCO Human Resource Development Scholarship Programme

Degrees OfferedMaster of Public Finance

Language of InstructionEnglish

Time ScheduleProgram duration: 13 months Enrollment: September Graduation: September

Related SDGs

Website http://www.grips.ac.jp/en/education/inter_programs/finance/

1 3 4 5 8 10



Masako Kurosawa
Director
Professor



Dainn Wie
Associate Director
Associate Professor

Fosters the skills needed to be leaders in taxation and customs

The Public Finance Program (PF) is operated under the full support of the World Bank (WB) and the World Customs Organization (WCO). The major objective of the PF is to provide students with the conceptual understanding and technical competence to become leaders in taxation and customs. The program is comprised of two segments: an academic segment common to tax and customs scholars, and a practicum segment which is divided into tax and customs depending on the scholar's stream.

>> PROGRAM DESIGN

The academic segment of the program provides rigorous economics-oriented training aimed at developing an understanding of the theoretical, empirical, and institutional aspects of tax and customs policy implementation and administration in the context of developing countries' economic and social development. A practicum at the National Tax Agency or the Customs Training Institute provides an opportunity for students to enhance their learning with hands-on experience in a tax/customs-related work environment and to integrate this experience with their formal education.

>> TARGET GROUP

Government officials from developing countries worldwide who are currently working in tax or customs administration or equivalent departments, with 2-3 years of work experience in the relevant field.

Curriculum	
Category	Course Name
Required Courses	
Tax Course	• International Taxation of Japan • Practicum at the National Tax Agency
Customs Course	• Customs Law • Practicum in Customs Administration I – III • Intellectual Property Rights Enforcement at the Border
	• Microeconomics I • Public Finance • Workshop in Public Finance • Introduction to Public Policy Studies • The World and the SDGs
Elective Courses	
Highly Recommended	• Macroeconomics I – II • Microeconomics II • Government and Market • Introduction to Applied Econometrics • Fiscal Reform in Japan • Economics of Tax Policy • Public Finance and Fiscal Policy • Reform of Economic Policy in Japan • International Trade • Development Economics • Human Resources Management
	• Monetary Economics (Money and Banking) • Applied Time Series Analysis for Macroeconomics • Poverty Alleviation • Strategy for Economic Development • Trade and Industrial Development • Game Theory • Mathematics for Economic Analysis • Public Economics • Labor and Health Economics • Economics of Law • International Finance • Environmental Economics • Resource and Energy Economics • Japanese Economy • Time Series Analysis • Economic Development of Japan • Advanced Econometrics I – II • International Relations • International Political Economy • Structure and Process of Government • Politics of Global Money and Finance • Accounting and Financial Management I • Global Governance: Leadership and Negotiation • Fiscal and Monetary Policies in Japan • Public Expenditure Management • Local Government Finance

>> CAREER DESTINATIONS

Graduates from PF are expected to return to their host organizations to become fiscal leaders in taxation and customs. Most of the graduates are still working at the tax and customs bureau in their home countries. To give a few examples of their current positions:

Tax Course

- Assistant Regional Manager – Audit, Domestic Revenue/ Singida Region, Tanzania Revenue Authority (Tanzania, 2014)
- Assistant Director, Monitoring, Research and Planning Department, National Revenue Authority (Sierra Leone, 2013)
- Deputy Commissioner Inland Revenue, Federal Board of Revenue (Pakistan, 2012)
- Joint Secretary, Policy Planning, Monitoring & Development Cooperation Coordination Division, National Reconstruction Authority (Nepal, 2010)

- Commissioner, Income Tax Division, Department of Revenue & Customs (Bhutan, 2007)
- Ag Deputy Commissioner, Investigations and Enforcement Department, Kenya Revenue Authority (Kenya, 2006)
- Chairman, Information Technology Center, State Administration of Taxation of City Shantou, Guangdong Province (China, 2005)
- Director, Internal Revenue Department, Ministry of Finance (Myanmar, 2003)
- Audit and Internal Compliance Section Chief, Directorate General of Taxes (Indonesia, 2001)

Customs Course

- Deputy Head of Reforms Division / Head of Project Management Unit, The State Fiscal Service of Ukraine (Ukraine, 2015)
- Director of Policy Development & Capacity Building, Yemen Customs Authority (Yemen, 2011)

- Deputy Director, Valuation and Tariff Classification Directorate, Ethiopian Revenues and Customs Authority (Ethiopia, 2010)
- Professional Associate, Capacity Building Directorate, World Customs Organization (Azerbaijan, 2009)
- Director Corporate Services, Fiji Islands Revenue and Customs Authority, Policy Department (Fiji, 2007)
- Deputy Director of International Cooperation Department, General Administration of Customs (Viet Nam, 2006)
- Director, Customs Reform & Modernization Section, Department of Customs (Nepal, 2005)
- Deputy Director, Department of Planning, Technique and International Affairs, General Department of Customs and Excise of Cambodia (Cambodia, 2004)
- Director General, Customs Intelligence and Investigation Directorate, Bangladesh Customs (Bangladesh, 2003)
- Commissioner, Ministry of Finance, Central Board of Excise and Customs (India, 2001)

Degrees OfferedMaster of Public Policy issued by GRIPS, Master's degree issued by an Indonesian University

Language of InstructionEnglish

Time ScheduleProgram duration: 1 year Enrollment: October Graduation: September

Related SDGs

Website http://www.grips.ac.jp/en/education/inter_programs/economic/



Yonosuke Hara
Director
Adjunct Professor



Toshihiro Kudo
Deputy Director
Professor

Trains government officials to contribute to good governance and economic development in Indonesia

Indonesia is undergoing enormous transformation. The “two D’s”—robust democratization and radical decentralization— are fundamentally reshaping the country’s political, economic, and social landscape.

To help Indonesia meet the challenges arising from this transformation, the GRIPS-Indonesia Linkage Master’s Program (LMP) was launched in 2007, designed to develop highly capable central and local government officials who will contribute to Indonesia’s capacity to continue on the road to good governance and economic prosperity. This collaborative academic program is offered by GRIPS and Indonesia’s premier national universities.

» TARGET GROUP

Talented government officials from the central or regional government of Indonesia

» PROGRAM DESIGN

During the two-year program, with the first year in Indonesia and the second one at GRIPS, the students enjoy excellent opportunities to combine theory with practical skills and research with action. Special emphasis is placed on developing core skills in areas that will be valuable to them: economics, political science, public policy, and public management. The program’s approach is multidisciplinary and covers a wide range of topics, allowing the fellows to select the courses that suit their individual needs. GRIPS offers a distinctive learning environment in which the LMP students have abundant opportunities to interact with and learn from a diverse international group of faculty members and their own peers—mid-career government officials from all over the world. In addition, the faculty’s vast network of contacts, along with the campus’ ideal location in the heart of metropolitan Tokyo, provides the students with uniquely easy access to the Japanese policymaking community.

Curriculum	
Category	Course Name
Required Courses	<ul style="list-style-type: none"> Independent Study (Policy Paper) Introduction to Public Policy Studies The World and the SDGs
Recommended Courses	<ul style="list-style-type: none"> Monetary Economics (Money and Banking) Economic Development of Southeast Asia Microeconomics II Government and Market Macroeconomics II Introduction to Applied Econometrics Global Development Agendas and Japan’s ODA Poverty Alleviation Strategy for Economic Development Trade and Industrial Development Local Public Finance Reform of Economic Policy in Japan Infrastructure and Regional Development: Lessons from the Past International Trade Resource and Energy Economics Contemporary Japanese Economy Japanese Economy Development Economics Agricultural Development Education Policy East Asian Economies Social Policy and Development in ASEAN Agricultural Economics International Development Policy Comparative Development Studies of Asia Government and Politics in Japan State and Politics in Southeast Asia Structure and Process of Government Politics of Global Money and Finance Non-Traditional Security Topics on International Relations Comparative Political Economy Introduction to Quantitative Methods Foreign Direct Investment Human Resources Management Public Expenditure Management Social Security System in Japan Small and Medium Enterprise and Technology National Land Policy Local Government System Local Government Finance Local Governance in the Changing World

» CAREER DESTINATIONS

Graduates from EPP are dispatched from the Indonesian government, and are expected to return to their former organizations to become leaders in public policy.



Disaster Management Policy Program

Master's Program

[Seismology, Earthquake Engineering and Tsunami Disaster Mitigation Course, Water-related Disaster Management Course]

Degree OfferedMaster of Disaster Management
Language of InstructionEnglish
Time ScheduleProgram duration: 1 year Enrollment: October Graduation: September

Related SDGs

Website http://www.grips.ac.jp/en/education/inter_programs/disaster/

9 11 17



Masaru Sugahara
 Director
 Professor



Hitoshi Ieda
 Associate Director
 Professor

Fosters disaster risk management experts in developing countries

Natural disasters result in crippling economic losses and human tragedy, hampering development, particularly in developing countries, where many people reside in buildings and areas that are vulnerable to natural disasters. In order to reduce the effects of natural disasters, human losses in particular, proactive disaster risk management should be promoted, preferably in a multi-disciplinary fashion. To that end, it is essential to cultivate, through professional education and training, disaster management experts with the expertise to develop and apply appropriate disaster management policies and techniques that harmonize with local conditions.

In order to enhance the capacity of professionals in developing countries to cope with natural disasters, the National Graduate Institute for Policy Studies (GRIPS) offers a master's degree program in Disaster Management Policy. This Program is offered jointly by the International Institute of Seismology and Earthquake Engineering (IISEE) of the Building Research Institute (BRI); the International Centre for Water Hazard and Risk Management (ICHARM) of the Public Works Research Institute (PWRI); and the Japan International Cooperation Agency (JICA). This program is administered as a JICA Knowledge Co-Creation Program, supported by Official Development Assistance from the Government of Japan.

>> TARGET GROUP

Technical officials, engineers, or researchers in the fields of earthquakes, tsunamis, water-related disasters, and disaster riskmanagement policy in developing countries.

>> PROGRAM DESIGN

This program is designed to give disaster risk management professionals from developing countries an opportunity to: study in one of the four courses, seismology, earthquake engineering, tsunami disaster mitigation, and water-related disasters; obtain a foundation of disaster risk management knowledge; study the theories which constitute the foundation of disaster management policy; study Japanese disaster management policy and systems; and acquire the ability to apply problem-solving approaches to the development of concrete technologies and policy appropriate to local conditions.

In addition to developing expertise in their areas of study, the students will obtain a bird's-eye view of the entire field of disaster management beyond the limits of their specializations; and will attend lectures, make presentations, and engage in discussions of the field of disaster management in order to deepen their understanding of other research areas. They will also have an opportunity to take part in group fieldwork in locations across Tokyo. This fieldwork brings together students with different specializations, from governments and organizations of a number of countries, for an innovative two-day exercise in which they give joint presentations with Japanese students from the Disaster Risk Management Concentration and the Infrastructure Policy Concentration.

Curriculum: Seismology, Earthquake Engineering and Tsunami Disaster Mitigation Course		Curriculum: Water-related Disaster Management Course	
Category	Course Name	Category	Course Name
Required Courses	<ul style="list-style-type: none"> Individual Study 	Required Courses	<ul style="list-style-type: none"> Individual Study
Recommended Courses	<ul style="list-style-type: none"> Disaster Management Policies A: from Regional and Infrastructure Aspect Disaster Management Policies B: from Urban and Community Aspect Earthquake Hazard Assessment A Earthquake Risk Assessment Tsunami Hazard Assessment Tsunami Countermeasures Earthquake Hazard Assessment B 	Recommended Courses	<ul style="list-style-type: none"> Disaster Management Policies A: from Regional and Infrastructure Aspect Disaster Management Policies B: from Urban and Community Aspect Hydrology Hydraulics Basic Concepts of Integrated Flood Risk Management (IFRM) Urban Flood Management and Flood Hazard Mapping Flood Hydraulics and River Channel Design Mechanics of Sediment Transportation and Channel Changes Control Measures for Landslide & Debris Flow Socio-economic and Environmental Aspects of Sustainability-oriented Flood Management
Elective Courses	<ul style="list-style-type: none"> Earthquake Phenomenology Characteristics of Earthquake Disasters Earthquake Circumstance Information Technology Related with Earthquakes and Disasters Structural Analysis Ground Vibration and Structural Dynamics Seismic Structures Seismic Evaluation and Seismic Design Code Theory of Tsunami Case Study (Practice for Earthquake Disaster - Recovery Management Policy I-III) Case Study (Practice for Tsunami Disaster Mitigation Policy) 	Elective Courses	<ul style="list-style-type: none"> Computer Programming Practice on Flood Forecasting and Inundation Analysis Practice on GIS and Remote Sensing Technique Site Visit of Water-related Disaster Management Practice in Japan Practice on Open Channel Hydraulics

>> ORIGIN AND AFFILIATION OF STUDENTS (as of April 1, 2019)

Albania: Food and Consumer Protection
Algeria: National Center of Applied Research in Earthquake Engineering
Armenia: Ministry of Emergency Situations of the Republic of Armenia
Bangladesh: Ministry of Water Resource; Bangladesh Water Development Board (BWDB); Housing and Building Research Institute-HBRI; Bangladesh Meteorological Department; Ministry of Housing and Public Works
Brazil: Ministry of Cities; National Department of Civil Protection and Defense (SEDEC), CPRM - Servico Geologico do Brasil
Chile: Santolaya Ingenieros Consultores Ltda; University of Valparaiso; Eonsis Geofisica
China: China Earthquake Administration (CEA); Earthquake Administration of Hubei Province; Anhui Meteorological Observatory
Colombia: Institute of Hydrology Meteorology and Environmental Studies (IDEAMI); General Maritime Directorate
Dominican Republic: National Geological Survey
East Timor: Ministry of Public Works, Transport and Communication
Ecuador: Oceanographic Institute Navy Ecuador (INOCAR); Risk Management Office; Secretariat of Risk Management; Geophysical Institute of the National Polytechnic School; Oceanographic Institute of the Armada
Egypt: National Research Institute for Astronomy and Geophysics (NRIAG), Al-Azhar University
El Salvador: Construction Service and Consultant; Planning Office of the San Salvador Metropolitan Area; Engineering Company of Central America; Salvadoran Foundation for Development and Minimum Housing (FUNDASAL); Ministry of Housing and Urban Development, Ministry of Environment and Natural Resources
Fiji: Ministry of Agriculture; Ministry of Disaster Management and Meteorological Services

India: Central Water Commission; National Institute of Hydrology; Ministry of Earth Science; Central Public Works Department
Indonesia: Research Institute for Human Settlements (RIHS) ; Pandang Panjang Geophysical Station of BMKG; Meteorology, Climatology and Geophysical Agency
Iran: Geological Survey of Iran
Kenya: Water Resources Management Authority
Kyrgyzstan: Central Asian Institute of Applied Geosciences
Liberia: National Disaster Management Agency
Malawi: Department of Disaster Management Affairs
Malaysia: Malaysian Meteorological Department; Department of Irrigation & Drainage (DID)
Maldives: National Disaster Management Center
Mexico: Ministry of Interior
Mongolia: Research Center of Astronomy and Geophysics of Mongolian Academy of Sciences
Morocco: Mohammed V University / Mohammadia School of Engineers
Mozambique: ARA-Sul - Regional Water Administration of South
Myanmar: Ministry of Construction; Ministry of Transport and Communication; Ministry of Agriculture, Livestock and Irrigation
Nepal: Kathmandu Metropolitan City Office; Department of Water Induced Disaster Prevention (DWIDP), Ministry of Energy, Water Resources and Irrigation; Lalitpur Sub-Metropolitan; Ministry of Industry; Office of the Gaur Municipality, Gaur Rautahat; Department of Mines & Geology; Ministry of Urban Development, Bharatpur Metropolitan City
Nicaragua: Geology and Geophysics Institute; National Autonomous University of Nicaragua; National University of Engineering; Nicaraguan Institute of Territorial Studies (INETER), IGG-CIGEO, UMAN / MANAGUA

Nigeria: Nigerian Integrated Water Resources Management Commission
Pakistan: Pakistan Meteorological Department, Water and Power Development Authority (WAPDA); Physical Planning & Housing Dept. Govt. of AJ & K
Papua New Guinea: Department of Works; Port Moresby Geophysical Observatory
Peru: Japan Peru Center for Earthquake Engineering and Disaster Mitigation-CISMID; National University; Peruvian Tsunami Warning Center, Directorate of Hydrography and Navigation (DHN)
Philippines: Department of Public Works and Highways; Philippine Institute of Volcanology and Seismology; Mines and Geosciences Bureau; National Irrigation Administration, Pangasinan State University, Philippine Atmospheric, Geophysical and Astronomical Services Administration (PAGASA)
Serbia: Institute for the Development of Water Resources "Jaroslav Cerni"
Sri Lanka: Sri Lanka Land Reclamation & Development Corporation; Irrigation Department; Eastern Province Office
Tanzania: Prime Minister's Office
Thailand: Srinakharinwirot University
Turkey: Istanbul Technical University; Prime Ministry; Ministry of Environment and Urbanization
Turkmenistan: The Scientific Research Institute of Seismicresistance construction
Uganda: Ministry of Energy and Mineral Development
Venezuela: Civil Protection and Environmental Institute Chacao's Municipality; Venezuelan Foundation for Seismological Research; Universidad Central de Venezuela
Viet Nam: Ministry of Agriculture and Rural Development; Southern Institute of Water Resources Research; Department of Natural Disaster Prevention and Control of Vietnam; Vietnam Academy for Water Resources
Zimbabwe: Ministry of Agriculture Mechanisation and Irrigation Developmen

Degree OfferedMaster of Policy Studies
Language of InstructionEnglish
Time ScheduleProgram duration: 1 year Enrollment: October Graduation: September

Related SDGs

Website http://www.grips.ac.jp/en/education/inter_programs/maritime/

14 16 17



Narushige Michishita
 Director
 Professor

This program allows students to acquire the professional knowledge, and analytical and communication skills needed to handle effectively a variety of maritime issues

The Maritime Safety and Security Policy Program (MSP) is a collaborative program designed and administered jointly by GRIPS and the Japan Coast Guard (JCG). MSP makes it possible for the students to benefit from the resources of both institutions in the fields of public policy, security studies, maritime safety, and maritime security. The students will have the opportunity to acquire professional knowledge, analytical skills, and communication skills relevant to their work while becoming members of a network of future coast guard leaders in Asia. With financial support from the Japan International Cooperation Agency (JICA), junior coast guard officers from different parts of Asia will study in Tokyo at GRIPS during the first half of the academic year and in Kure, Hiroshima at the Japan Coast Guard Academy (JCGA)—the JCG's most important educational institution—during the second half.

Study at GRIPS

After enrolling in the program, the students will take required and elective courses at GRIPS from October through March. The required courses are International Relations, International Security Studies, International Law, International Relations in East Asia, and International Law of the Sea. The elective courses will enable students to deepen their knowledge in fields of their interest. The elective subjects include courses in politics, economics, national security, and policy making.

Study at the JCGA

From April through July, the students will take courses and participate in practical training and educational programs at the JCGA. The required courses are Policy for Search and Rescue, Salvage and Maritime Disaster Prevention, and Maritime Police Policy. The students can further enhance their ability to effectively execute their duties as coast guard leaders in Asia through the study of a wide range of elective subjects. The JCGA's elective courses are designed to develop the students' knowledge of science, technology, and criminal investigation, all of which are vital elements of effective policy formulation. The students will attend lectures focusing on past maritime incidents and possible future scenarios, offered by leading experts and JCG officers. Through lectures and discussions, they will enhance their understanding of the roles played by maritime law enforcement agencies and learn to identify best practices.

Policy Paper

During the course of one year, each student is required to write a policy paper on issues relevant to the study of maritime safety and security. In order to do so, the student will work together with two academic advisors—one each from GRIPS and the JCGA—to complete the paper before graduation.

» TARGET GROUP

Junior coast guard officers from Asian countries

Curriculum	
Category	Course Name
Required Courses	<ul style="list-style-type: none"> • Independent Study • International Relations in East Asia • International Relations • International Security Studies • International Law • International Law of the Sea • Policy for Search & Rescue, Salvage and Maritime Disaster Prevention • Maritime Police Policy • Case Study on Maritime Safety and Security Policy I – II
Recommended Courses	<ul style="list-style-type: none"> • Essential Microeconomics • Essential Macroeconomics • Government and Market • Government and Politics in Japan • International Political Economy • Military Operations, Strategy, and Policy • Comparative Politics • State and Politics in Southeast Asia • Non-Traditional Security • The World and the SDGs • Introduction to Quantitative Methods • Introductory Statistics • International Comparative Criminal Law • Traffic Management Systems I – II • Information Management System I – II • Introduction to Oceanography • Marine Environment and Pollution • Ship Maneuverability and Practical Operation • Fundamentals of Advanced Engineering

» CAREER DESTINATIONS

Graduates of MSP are expected to take core positions in their coast guard agencies. While executing their duties, they also have an opportunity to disseminate the knowledge they have gained from GRIPS and the JCGA to their agencies and beyond. In addition, graduates are in a unique position to play a central role in their organizations' international negotiations by drawing on the human networks cultivated in the program.



Degrees Offered Ph.D. in Public Economics, Ph.D. in Development Economics, Ph.D. in International Economics,
MA in Public Economics, MA in Development Economics, MA in International Economics

Language of Instruction English

Time Schedule **Program duration:** 5 years* (master's + doctorate) **Enrollment:** October **Graduation:** September

*May vary according to student's ability and academic background

Related SDGs

Website http://www.grips.ac.jp/en/education/phd_programs/analysis/



Alistair Munro
Director
Professor

Educates individuals to research and analyse real-world policy issues

The Policy Analysis Program (PA), launched in 2008, is a 5-year Ph.D. program. A 3 year version is also available to well-prepared students. The program prepares individuals to conduct high level research and to analyse actual policy issues, both theoretically and empirically. To this end, the program requires students to engage in economics and econometrics coursework in the early stages.

» TARGET GROUP

Those who hold a bachelor's and/or master's degree and are interested in pursuing a career as a researcher and analyst of public economics, development economics, and/or international economics are welcome to apply.

» PROGRAM DESIGN

The study of advanced economics and econometrics methodology is compulsory. By studying specific economic

theories and subjects related to policy analysis, students will develop the ability to handle various policy issues. In addition to lectures, there are seminar classes aimed at increasing research skills. Students are also provided with opportunities to consider various practical issues with those who are involved in actual policy formulation and analysis through daily interactions, lectures, tutorials, and workshops.

The coursework requirements are flexible to suit the abilities of students with differing academic backgrounds. The standard enrolment time is 5 years, though the required coursework is expected to be completed within 2-3 years. For students with a relevant masters degree, a 3 year program is also available. Those without a strong background in economics are expected to first study basic subjects for the master's course. All students must pass the qualifying examinations required for writing a doctoral thesis.

Curriculum	
Category	Course Name
Core Courses (Required)	<ul style="list-style-type: none"> Advanced Microeconomics I – II Advanced Macroeconomics I – II Advanced Econometrics I – II Graduate Seminar I – III Policy Analysis Research Workshop
Recommended Courses	<ul style="list-style-type: none"> Advanced Microeconomics III Advanced Microeconomics IV Advanced Macroeconomics III Advanced Macroeconomics IV Advanced Econometrics III Advanced Econometrics IV
Elective Courses	<ul style="list-style-type: none"> Introduction to Applied Econometrics Mathematics for Economic Analysis Computer Programming for Economics Graduate Seminar IV – V many other specialist Economics and non-Economics courses (with Director's approval)

» ORIGIN AND AFFILIATION OF STUDENTS

(as of April 1, 2019)

Bangladesh: Ministry of Education; Jagannath University, Centre for Policy Dialogue

Ethiopia: Jimma University; National Planning Commission of Ethiopia; Mekelle University

Ghana: Innovation for Poverty Action

India: Ministry of Finance

Korea: Ministry of Strategy and Finance

Malawi: Ministry of Economic Planning and Development

Mongolia: National Statistical Office of Mongolia

Nepal: Asian Development Bank;

Philippines: Bangko Sentral ng Pilipinas

Thailand: Bangkok Bank Public Company Limited

Vietnam: Saigon University; Foreign Trade University; State Bank of Vietnam; Banking Academy of Vietnam; National Economics University; Ministry of Planning and Investment;

Zimbabwe: Ministry of Industry and Commerce

» RECENT THESES

• Work-Life Balance and Gender Equality in Japan (2018)

• Essays on Welfare Costs of Shifting Trend Inflation and Policy Uncertainty (2018)

• Between Three Fires: Population Pressure, Soil Degradation, and Land Conflicts in Sub-Saharan Africa – Evidence from Kenya and Uganda (2018)

• Essays on Risk Premia in Emerging Market Currencies (2018)

• Essays on Migration, Conflict and Human Capital Development: Evidence from Nepal (2017)

• The Effects of Education on Fertility and on Labour Market Outcomes: Regression Discontinuity Evidence from Ghana (2017)

• Behavioural Economics and Decision-Making in Agricultural Households: Evidence from Rural Uganda (2017)

• Essays on Roll-on/Roll-off Policy: The Impact of Nautical Highways in the Philippines (2016)

• Access to Health Facilities and Maternal Health: A Tale of Two Countries in East Africa (2015)

• Thailand Monetary Policy Analysis: A Bayesian Estimation of DSGE Models (2015)

• Structural Reform Policy and Technical Efficiency: Empirical Evidence from Indian Electricity Distribution Sector (2015)

• An Inquiry into the Pharmaceutical Procurement in China: Evidence from Guangdong Province (2015)

• Fukubukuro: Valuation and Choice Experiments on Shrouded and Bundled Goods (2015)

• Roads and Rural Development: Evidence from a Longitudinal Household Survey in Kenya (2014)

Degrees Offered.....Ph.D. in Public Policy, Ph.D. in Government, Ph.D. in Social Systems Analysis, Ph.D. in Cultural Policy

Language of Instruction.....English, Japanese

Time Schedule.....Program duration: 3 years Enrollment: October Graduation: September

Related SDGs

Website http://www.grips.ac.jp/en/education/phd_programs/public/



Mikitaka Masuyama
Director
Professor



Takashi Tsuchiya
Associate Director
Professor



Naohiko Hibino
Associate Director
Associate Professor

This program equips public administrators and researchers in the field of policy studies with advanced skills and practical knowledge for policy analysis

The Public Policy Program was launched in 2002. Students in this program learn to conduct high-level policy research, master the disciplines required for conducting policy research, write academic research papers in social science, teach at institutions of higher education, and improve their proficiency in foreign languages.

» TARGET GROUP

The program accepts students who have demonstrated high academic capability after completing the Master Program in Public Policy. Those who have completed master's courses in relevant areas of study at other institutions are also welcome.

Such prospective students may enter the program after passing internal examinations given by us, in order to confirm their academic ability.

» PROGRAM DESIGN

In addition to lectures and seminars, students also have opportunities to participate in more practical research activities while writing their dissertation. For example, they may get involved in on-going research projects at our Policy Research Center or participate in collaborative research with governmental research organizations jointly working with GRIPS.

Within the program, students can belong to diverse fields appropriate to their research interests, such as Public Administration, General, Politics, Economics, Mathematical Analysis, Social Systems Analysis, Development, International Development, and Cultural Policy.

Curriculum	
Category	Course Name
Politics	<ul style="list-style-type: none"> Special Seminar for Policy Process Special Seminar for Japanese Politics International Political Economy Workshop Strategic Studies Research Seminar International Relations in East Asia (Advanced) Japan's Foreign Policy Diplomatic History of Modern Japan(Advanced) Special Seminar for Administrative History) Scope and Methods of Case Studies Social Science Methodology for Qualitative Analysis Social Science Methodology for Quantitative Analysis Security and International Studies Dissertation Seminar Advanced International Relations Politics and Diplomacy in Postwar Japan Advanced American Foreign Policy Advanced Political Economy of Modern Japan Politics of Global Money and Finance (Advanced) Advanced Comparative Political Economy Advanced International Relations in Europe Advanced Development Cooperation Policy
Economic Theory	<ul style="list-style-type: none"> Advanced Microeconomics I – IV Advanced Macroeconomics I – IV Advanced Econometrics I – IV Advanced Development Economics
Quantitative Analysis	<ul style="list-style-type: none"> Statistical Data Analysis Applied Statistics Mathematics for Planning Mathematical Modeling Analysis Operations Research Optimization and Simulation Seminar on Statistical Data Analysis Seminar on Mathematical Modeling Seminar on Policy Simulation
Development Policy	<ul style="list-style-type: none"> Sociological Research Special Seminar for Sociology Advanced Topics in National Development Policy and Infrastructure Investment Advanced Design of Infrastructure Advanced Topics in Transportation Policy and Project Evaluation Advanced Infrastructure and Regional Development: Lessons from the Past Advanced Disaster Management Policies B: from Urban and Community Aspect
Cultural Policy	<ul style="list-style-type: none"> Advanced Topics in Cultural Capital and Policy Issues Advanced Topics in Arts Policy Advanced Topics in Cultural Policy Cultural Policy Research Seminar I – III Heritage Policy System in Japan International System of Preserving Cultural Heritage Heritage Policy System in Europe Heritage for Development

» AFFILIATION OF STUDENTS AND GRADUATES

(as of April 1, 2019)

Afghanistan: Canadian Program Support Unit

Bangladesh: Bangladesh Bank, Bangladesh Telecommunication Regulatory Commission(BTRC)

Bulgaria: Ministry of Economy and Energy

Cambodia: Ministry of Commerce

China: World Bank of Beijing

Ethiopia: Ethiopian Development Research Institute (EDRI)

Germany: HHL Leipzig Graduate School of Management

Ghana: Ministry of Finance and Economic Planning

Indonesia: National Development Planning Agency (BAPPENAS), Ministry of Finance

Japan: Ministry of Economy, Trade and Industry (METI), Research Institute of Economy, Trade and Industry (RIETI), Japan Science and Technology Agency (JST), Japan Research Institute for Social Systems, Japan International Cooperation Agency (JICA), Asian Development Bank Institute (ADBI)

Kenya: Institute of Policy Analysis and Research

Kyrgyz Republic: Eurasian Development Bank

Laos: National University of Laos

Pakistan: Federal Bureau of Statistics

Philippines: National Economic and Development Authority

Sri Lanka: Central Bank of Sri Lanka

Thailand: National Economic and Social Development Board

Uzbekistan: Central Bank of Uzbekistan

Viet Nam: Foreign Trade University, National Economics University

• Central Banking and the Political Economy of East Asian Regionalism: Sovereignty, Autonomy and Monetary Policy (2016)

• Balancing Preservation And Utilization in Greek Museum Policy: The Case of EU Regional Policy Investments in State Regional Archaeological Museums (2016)

• The Role of Japanese Corporate R&D in The UK: Measuring Business and Academic Benefits (2016)

• Evaluating the Impacts of the Local Public Hospital Reform and Measuring Efficiency of the Health Care System in Japan (2015)

» RECENT THESES

• Essays on the Status and Determinants of Efficiency and Informality in Manufacturing Firms of Bangladesh (2017)

• Investigating Economic Growth, Trade Issues and Energy Strategies for Central Asian Countries (2017)

GRIPS Global Governance Program (G-cube)

Degrees OfferedPh.D. in Advanced Policy Studies
Language of InstructionEnglish
Time ScheduleProgram duration: 3 years Enrollment: October Graduation: September

Website http://www.grips.ac.jp/en/education/phd_programs/g-cube/



Tetsushi Sonobe
 Director
 Professor

This program aims to nurture leaders of leaders, individuals who will lead specialized leaders and coordinate a variety of values and interests from a broad perspective so as to address vital challenges facing global society.

This program is designed to equip students to become a leader of leaders. While the world faces complex and large-scale issues that cannot be solved by one nation or one leader only, including environmental destruction, terrorism, and wars, the world economy is growing as a whole after the Cold War ended in 1990. According to the World Bank, the poverty rate decreased from 36% in 1990 to 10% in 2015, and the number of poor people declined from 1,895 million to 736 million during the same period. The time when wealth is concentrated in the hands of seven major industrialized nations, or G7, has come to an end. Now is the time when the world order can only be discussed with the participation of emerging nations, typically G20 members. Through this program, students are expected to acquire advanced knowledge of economics, political science, history, and area studies, as well as leadership skills for leading to be demonstrated in a team of such specialists.

This program started in 2014, and 42 students from 22 countries worldwide have studied here in the first five years. Most of the students have work experience in core national government agencies, such as ministries of foreign affairs and finance and central banks. They not only deepen expertise and professional skills individually but also develop their unique point of view by studying with classmates from all over the world during enrollment of this program. Eight students have already earned doctorates and are working for their home countries or international

institutes, such as the World Bank. Our unique teaching methods that attach importance to communication increase peer learning and hard work together among students, which makes G-cube program become a multinational and multidisciplinary community of intelligence.

For the further development of the G-cube community, the curriculum was reorganized into two courses for the 2019 academic year and onwards. In the Growth and Governance Studies (GGS) Concentration, students discuss governance in the midst of economic growth and huge changes in society and the economy. Governance means people's activities to bring about order in society. We will consider how governance can be established for the realization of sustainable development in the process of economic growth. In the International Development Studies (IDS) Concentration, students discuss the issues concerning the development of a whole nation, including poverty, inequality, and economic growth, as well as problems each nation faces, including rural development, human capital, industrial development, gender, immigrants, disputes, and governance and corruption, using an analytical method in economic science. In both courses, students consider, from a historical perspective including the experience of Japan, what the factors that hinder economic development are.

Why not becoming a part of this energetic community, G-cube? We wholeheartedly welcome you.



Keiichi Tsunekawa
 Dupty Director
 Adjunct Professor



Yoko Kijima
 Associate Director
 Professor



Yusuke Takagi
 Associate Director
 Assistant Professor



» CAREER DESTINATIONS

Graduates from G-cube are expected to actively pursue a career in the government, international organizations or in the private sector, such as global businesses.

» ORIGIN AND AFFILIATION OF STUDENTS

(as of April 1, 2019)

Bangladesh: Ministry of Public Administration
Cambodia: State Secretariat of Civil Aviation (SSCA)
Eritrea: Adikeih College of Arts and Social Sciences
Ethiopia: Office of the Prime Minister
Ghana: Office of Head Civil Service, National Peace Council, Ministry of Finance, University of Ghana Business School

Indonesia: Ministry of State Secretariat, Ministry of Foreign Affairs
Japan: Japan International Cooperation Agency(JICA), Board of Audit of Japan
Kenya: The Kenya Institute for Public Policy Research and Analysis
Laos: Ministry of Planning and Investment
Maldives: South Asian Association for Regional Cooperation (SAARC)
Malaysia: Ministry of Rural Development
Myanmar: Myanma Foreign Trade Bank, Ministry of Planning and Finance
Pakistan: National Accountability Bureau (NAB), Frderal Board of Pakistan

Philippines: Office of the Special Envoy on Transnational Crime, Office of the President; Philippine Coast Guard, Bangko Sentral ng Pilipinas
Rwanda: Office of the Prime Minister
Republic of Korea: National Assembly Secretariat
Sri Lanka: Ministry of National Policies and Economic Affairs
Tanzania: Ministry of Finance
Thailand: Bank of Thailand ,Ministry of interior, Chulalongkon University
Uganda: Bank of Uganda
Viet Nam: Hau Giang Home Affaires Department



Growth and Governance Studies (GGS) Concentration

In the Growth and Governance Studies (GGS) Concentration, students discuss issues that occur because of or in spite of the growth of the economy. Although the world economy is growing as a whole thanks to globalization, such problems as the social and economic polarization and environmental disruption cannot be solved unless concrete measures are implemented. Triggered by the activities of multinational businesses mainly in the information field, the necessity of a new framework to protect the rights of individuals is discussed. In this course, students discuss the growth necessary for sustainable development and the problems caused by such development with a focus on governance, which is a political activity.

Governance is a human activity to bring about a certain order in all issues. The methods include the use of systems, for example, laws and policies, as well as activities, such as promotion of

environmental awareness. In the past, most part of governance was assumed by a government. Keeping pace with the progress of democratization and the expansion of markets, non-governmental organizations (NGOs) consisting of volunteer citizens and private companies practically undertake governance on a wide variety of occasions. On the other hand, it is true that there are areas where regulations or actions by a government are expected, including activities of multinational businesses and international terrorists. For sustainable development, inclusive and problem-solving-style governance is necessary in addition to growth. This course is designed for students to acquire wide knowledge in the fields of area studies, in addition to international politics, comparative politics, and political economy and be equipped to become intelligent leaders who have a wider perspective.

Curriculum	
Category	Course Name
Required Courses	<ul style="list-style-type: none"> • Policy Debate Seminar I • Executive Seminar I • G-cube Workshop
Recommended Courses	<ul style="list-style-type: none"> • Development Econometrics • Theoretical Foundation of Economic Policy • State and Governance • Diplomatic History of Modern Japan (Advanced) • State and Politics in Southeast Asia (Advanced) • Tutorial I–III
GGS (Growth and Governance Studies Concentration)	
Auxiliary Table	<ul style="list-style-type: none"> • Advanced International Security Studies • Politics and Diplomacy in Postwar Japan • Comparative Politics • Advanced Comparative Political Economy • Advanced International Relations in Europe • Advanced International Relations in East Asia • Advanced Comparative Development Studies of Asia • Economic Development of Japan • Advanced Gender and Development • Trade and Industrial Development
Elective Courses	Other courses (with the advisory committee's approval)

International Development Studies (IDS) Concentration

In the International Development Studies (IDS) Concentration, students examine the issues developing nations face using the methods of economics in the main. For sure, nationwide development triggered by economic growth is essential for the reduction of poverty. However, there is no guarantee that the benefit of economic growth will reach poor people because there are a variety of inhibiting factors, such as the nation's governance and institutions, industrial structure, physical and human capital, and the historical background. In this course, students consider a variety factors required to realize sustainable development in

addition to economic growth.

Each country has different and various issues, including rural development, human capital, industrial development, gender, immigrants, terrorism and armed conflicts, governance/corruption, climate change, disasters, and vulnerability. This course is designed for students to acquire the methods used in development economics, as well as knowledge of the political science and history to understand a variety of issues and be equipped to become those who have the sophisticated abilities of analyzing, evaluating, and making policies.

Curriculum	
Category	Course Name
Required Courses	<ul style="list-style-type: none"> • Policy Debate Seminar I • Executive Seminar I • G-cube Workshop
Recommended Courses	<ul style="list-style-type: none"> • Development Econometrics • Theoretical Foundation of Economic Policy • State and Governance • Diplomatic History of Modern Japan (Advanced) • State and Politics in Southeast Asia (Advanced) • Tutorial I–III
IDS (International Development Studies Concentration)	
Auxiliary Table	<ul style="list-style-type: none"> • Advanced International Relations in East Asia • Advanced Comparative Development Studies of Asia • Economic Development of Japan • Advanced Gender and Development • Trade and Industrial Development • Resource and Energy Economics • Agricultural Development • Advanced Development Economics • Economics of Health and Education • Advanced Poverty Alleviation • International Development Policy
Elective Courses	Other courses (with the advisory committee's approval)

Degree OfferedPh.D. in International Relations

Language of InstructionEnglish

Time ScheduleProgram duration: Minimum 3 years Enrollment: April, October Graduation: March, September

Related SDGs

Website http://www.grips.ac.jp/en/education/phd_programs/security/

7 16 17



Narushige Michishita
Director
Professor

This program allows students to acquire the academic and practical skills needed for understanding and resolving security and foreign policy issues

Established in partnership with the Ministry of Defense and the Ministry of Foreign Affairs of Japan, the Security and International Studies Program (SISP) aims to equip the students with the academic and practical skills necessary for understanding and solving security and foreign policy issues. The students will conduct in-depth research on historical and contemporary security and foreign policy matters, and engage in theoretical and policy debates with program faculty members and outside specialists. Field trips are another important means of enhancing the students' understanding of the subject matter.

>> PROGRAM DESIGN

In the first year, the students are required to undertake coursework and earn a minimum of 14 credits for courses and seminars.

By the end of the first year, the students are expected to pass three written Qualifying Examinations, submit a dissertation proposal, and pass one oral Qualifying Examination (the doctoral dissertation proposal defense). After completing all four Qualifying Examinations, students can start writing their dissertation.

>> TARGET GROUP

We welcome applicants with a master's degree in social sciences, especially international relations, politics, economics, or law. Government officials, military officers, researchers, and journalists with relevant work or academic experience are particularly welcome to apply.

Curriculum	
Category	Course Name
Theoretical Courses (Elective)	<ul style="list-style-type: none"> • International Political Economy Workshop • Strategic Studies Research Seminar • Advanced International Relations • Advanced International Security Studies • Comparative Politics • Politics of Global Money and Finance (Advanced)
Regional Courses (Elective)	<ul style="list-style-type: none"> • International Relations in East Asia (Advanced) • Diplomatic History of Modern Japan (Advanced) • Politics and Diplomacy in Postwar Japan • Advanced Chinese Foreign Policy • Advanced American Foreign Policy • Advanced Political Economy of Modern Japan • Advanced Comparative Political Economy • Advanced International Relations in Europe
Policy Courses (Elective)	<ul style="list-style-type: none"> • Military Operations, Strategy, and Policy (Advanced) • Non-Traditional Security (Advanced) • Intelligence and National Security (Advanced) • Advanced Development Cooperation Policy
Paper Writing (Core)	<ul style="list-style-type: none"> • Security and International Studies Dissertation Seminar

>> AFFILIATIONS PAST AND PRESENT OF THE PROGRAM'S STUDENTS AND ALUMNI

Government Organizations:

Maritime Self-Defense Force (Japan); Ministry of Defense (Japan); Ministry of Finance (India); Ministry of Foreign Affairs (Indonesia, Japan); Presidential Legislative Liaison Office (Philippines); Royal Thai Customs

International Organizations:

Amnesty International; United Nations; UN Economic and Social Commission for Asia and the Pacific; UN Development Programme

Research and Education Organizations:

Institute of Energy Economics (Japan); Law Enforcement University of Mongolia; National Graduate Institute for Policy Studies (Japan); Oxford Institute for Energy Studies (UK); Philippine Institute for Development Studies; Tokyo International University (Japan); Waseda Institute for Advanced Study (Japan); Zenken (Japan)

- Security Strategies of Small States, 1992-2016: Maldives in Comparison with Brunei, Timor-Leste and Seychelles
- Policy Innovation under Democratic Leadership in a "Weak" State: Trade Liberalization and AFTA Implementation in the Philippines

- Deconstructing the "China Threat": An Inquiry into Changing Perceptions in India and Japan
- Patronage Politics and Rice Policies in the Philippines and Thailand
- Conflict Cycles and Spoiler Problems in the Southern Philippines



>> RECENT THESES

- Neutral States and Wartime Japan: The Diplomacy of Sweden, Spain, and Switzerland toward the Empire

Degree OfferedPh.D. in International Development Studies
Language of InstructionEnglish
Time ScheduleProgram duration: 3 years Enrollment: October Graduation: September

Related SDGs

Website http://www.grips.ac.jp/en/education/phd_programs/state_building/

1 3 4 5 8 9 10 11 16 17



Khoo Boo Teik
 Director
 Professor

This program fosters professionals who will be able to take leadership roles in planning and analyzing policies toward state building and economic development based on the knowledge and analytical skills of political science and economics

The State Building and Economic Development Program (SBED) is an interdisciplinary program designed for students who have a master's degree in an area of social sciences and are interested in interactions between politics and the economy in developing countries and emerging economies. The program aims to develop talented individuals who are capable of research and policy formulation requiring advanced knowledge of both political science and economics and who will play key roles in democratic governance in the world.

GRIPS implemented the Global COE Program, entitled "The Transferability of East Asian Development Strategies and State Building" from 2008 to 2012, in which political scientists and economists have promoted joint studies and fostered young researchers and technocrats who will design policies based on the knowledge gained from the results of the advanced studies. The Ph.D. program represents one of the achievements of the Global COE Program and is designed to continue and expand upon the human resource development initiated by the Global COE Program. During the first year of this program, students take courses in political science, economics and history intensively to acquire advanced knowledge and analytical skills at the Ph.D. level of proficiency. From the second year, students concentrate on field work, archival research, analysis, and writing to earn a degree in three years. All courses in the program are offered in English. The dissertation, also to be written in English, must be relevant to state building and economic development, demonstrate a capacity for making original and significant contributions to the existing knowledge base, and deal with a policy issue or have a policy implication. Students who fulfill the requirements will be conferred a Ph.D. in International Development Studies.

In this program, the advisory committee for each student includes faculty members in political science and economics in order to develop individuals with multiple points of view and analytical skills in both fields. To help students acquire a good sense of

what is actually happening on the ground in developing countries and emerging economies, each advisory committee, comprising faculty members with a wealth of relevant experience in the field, encourages and assists students to conduct field work of their own. The committee not only guides students in the research process of planning, data collection, analysis, and writing but also helps them to publish journal articles and books.

>> TARGET GROUP

Students with a master's degree in a field of social science, such as politics, economics, and international relations, who are interested in the interaction between political and economic processes and outcomes.

>> PROGRAM DESIGN

All students are required to take courses in political science and economics, including political history and economic history. Students will consult with their supervisors regarding the choice of courses based on their academic background, thesis topic, and proposed career path. These courses will allow students to acquire the necessary knowledge and skills for their Ph.D. study. All lectures and examinations will be conducted in English. At the end of the first year, a Qualifying Exam (QE) will be held. In the second year, students will start preparing for their Ph.D. dissertation under the guidance of their supervisors. The dissertation will be examined by the dissertation committee members, consisting of the main supervisor, GRIPS sub-supervisors, and an external supervisor. We expect that it will take three years to complete the course work and dissertation; however, this depends on the students' academic background, ability, and effort. With the international intellectual environment and academic expertise at GRIPS, the SBED program will provide excellent opportunities for students who wish to pursue their studies in state building and economic development.

* No longer accepting applications.

Curriculum	
Category	Course Name
Development Economics	<ul style="list-style-type: none"> Theoretical Foundation of Economic Policy Applied Econometrics Advanced Development Economics Introduction to Applied Econometrics (Advanced) Strategy for Economic Development (Advanced) Mathematics for Economic Analysis (Advanced)
History	<ul style="list-style-type: none"> Advanced Global Economic History Comparative State Formation (Advanced)
Politics	<ul style="list-style-type: none"> Institutions in Policymaking International Relations in East Asia (Advanced) State and Politics in Southeast Asia (Advanced) State and Politics in Africa (Advanced) Advanced Political Economy of Modern Japan Advanced Comparative Political Economy
Courses to be taken after passing qualifying exam	<ul style="list-style-type: none"> State Building and Economic Development Seminar Tutorial I – V

>> CAREERS

The SBED Program began in 2013. In the past decade, 50 students from 18 countries studied under the Global COE and the 21st Century COE programs, the predecessors of the SBED Program. The graduates of these programs are actively involved in policy-making and policy analysis in governmental institutions, universities, private research institutes and international organizations. Since March 2017, the SBED Program has had six PhD graduates who work in the National University of Singapore, Asian Development Bank, Ministry of Foreign Affairs in Uganda, Temple University in Japan and Ministry of Industry, Trade and Investment in Tanzania.

>> ORIGIN AND AFFILIATION OF STUDENTS

Ethiopia: Ethiopian Development Research Institute (EDRI)
Korea: Korea Export-Import Bank
Japan: Japan International Cooperation Agency; Ministry of Foreign Affairs
Myanmar: Ministry of Agriculture
Philippines: Asian Development Bank
Thailand: King Mongkut's University of Technology Thonburi; Walailak University; Wedu Foundation

>> RECENT THESES

- Toward Productivity Improvement in Private Firms and Public Offices: Case Studies in Tanzania (2018)
- Urban Space in Economic History: Tokyo as Asia's First Megacity 1945-1970 (2018)
- Essays on the Impact of Mobile Money on Human Capital and Agricultural Investment: Evidence from Rural Uganda (2017)
- Coordination Failure in Government Offices: A Case of Uganda (2017)
- International Migration and Development : Evidence from Rural Households in Bangladesh (2016)
- Jobs and Education in India (2016)

Degree Offered.....Ph.D. in Disaster Management
Language of Instruction.....English
Time Schedule.....Program duration: 3 years Enrollment: October Graduation: September

Related SDGs

Website http://www.grips.ac.jp/en/education/phd_programs/disaster/



Hitoshi Ieda
 Director
 Professor

Cultivates professionals who can educate researchers and take leadership in the planning and implementation of national and international strategy and water-related risk management policy

Water-related disasters are intensifying in frequency and magnitude due to such worldwide phenomena as urbanization, industrialization, and climate change. These disasters cause devastating loss of human life and livelihood, and seriously impede economic development.

It is increasingly evident that capacity development and human empowerment are the necessary foundation to ensure that societies are resilient against disasters and capable of sustainable development. In order to enhance that foundation, it is urgent that countries increase their capacity to train researchers, educators and strategy/policy specialists in risk management.

In the interest of supporting countries in such capacity building, the National Graduate Institute for Policy Studies (GRIPS) and the International Centre for Water Hazard and Risk Management (ICHARM) of the Public Works Research Institute (PWRI) jointly launched a Ph.D. program in October 2010. The broad aim of the program is to nurture professionals who can train researchers and take leadership in the planning and implementation of national and international strategy and water-related risk management policy.

» TARGET GROUP

Technical officials, engineers, and researchers in the fields of water-related disasters and disaster risk management policy in developing countries.

» PROGRAM DESIGN

At the end of the first year of the doctoral program, each student is expected to submit a thesis proposal and pass a Qualifying Examination (QE).

In order to be eligible for the doctoral dissertation QE, the student must earn a minimum of 8 credits from among the courses offered, not only at GRIPS and ICHARM, but also at the University of Tokyo. In addition, the student's supervising committee may advise the student to take up to 4 credits from Category III.

After passing the QE, the student can begin dissertation work in the second academic year, with the aim of completing it by the end of the third year.

After starting work on her/his dissertation, the student is required to attend a Ph.D./doctoral candidate seminar to report on the research that she/he is planning or already pursuing.

At the end of the third year, to complete the doctoral course work, each student is required to present the results of his/her research in a Ph.D./doctoral thesis defense, and demonstrate the validity, relevance, and academic contribution of the findings.

At the present time PWRI is calling for applications for ICHARM Research Assistantship positions. Students employed in these positions will work at ICHARM as ICHARM Research Assistants. This is an excellent opportunity to advance one's learning and experience the practical work of ICHARM while carrying out one's own research. Those interested in the assistantship should visit the PWRI website for further information.

Curriculum	
Category	Course Name
Electives	<ul style="list-style-type: none"> • Supply Chain Management for Infrastructure Planners • Infrastructure and Regional Development: Lessons from the Past • Advanced Disaster Management Policies A: from Regional and Infrastructure Aspect • Advanced Disaster Management Policies B: from Urban and Community Aspect • Hydraulics • Advanced Integrated Flood Management • Advanced Urban Flood Management and Flood Hazard Mapping • Socio-economic and Environmental Aspects of Advanced Sustainability-oriented Flood Management • Hydrology • Advanced Flood Hydraulics and River Channel Design • Advanced Mechanics of Sediment Transportation and River Changes • Advanced Hydrometeorology • Advanced Hydrodynamics

» ORIGIN AND AFFILIATION OF STUDENTS

(as of April 1, 2019)

Bangladesh: Bangladesh Water Development Board (BWDB); Khulna University

Guatemala: National Coordinator for Disaster Reduction
Japan: NIPPON KOEI CO., LTD.; Ministry of Land, Infrastructure and Transport

Pakistan: Water & Power Development Authority (WAPDA); Pakistan Space & Upper Atmosphere Research Commission (SUPARCO)

Sri Lanka: Irrigation Department

Vietnam: Vietnam Disaster Management Authority, MARD

» RECENT THESES

- Development of an integrated hydrological modeling framework in mountainous areas including rainfall and snowfall quantification derived from data integration (2018)
- Assessment of Selected Strategies to Increase Economic Benefits in Haor Areas in Bangladesh (2018)
- Risk-benefit analyses to balance flood risk, livelihoods and ecosystem services (2016)
- Disaster preparedness at household and community level: The case of cyclone prone coastal Bangladesh (2016)
- Numerical Prediction of Channel Changes in Large, Braided Rivers Dominated by Suspended Sediment (2016)

- Assessment of Climate Change Impact on Hydrology of the Ganges-Brahmaputra-Meghna Basin and Implications for Future Water Resource Management (2015)
- Comparative assessment of hydrologic functions at large river basins and their responses to climate change (2015)
- Vulnerable People and Flood Risk Management Policies (2014)

Degrees OfferedPh.D. in Public Policy, Doctor of Policy Studies
Language of InstructionEnglish, Japanese
Time ScheduleProgram duration: 3 years Enrollment: April or October Graduation: March or September

Related SDGs

Website http://www.grips.ac.jp/en/education/phd_programs/innovation/



Atsushi Sunami
 Director
 Adjunct Professor

This program equips government officials with the skills needed to design, implement and evaluate policies related to science, technology and innovation based on a scientific approach, and trains other professionals to become experts in the theory and practice of policy making



Tateo Arimoto
 Associate Director
 Adjunct Professor

There is a growing need for science, technology and innovation (STI) to address economic and societal challenges. Many national and local governments, universities, research institutions and companies have been trying to find ways to design more effective and efficient STI policies and strategies to realize innovation and sustainable growth.

This program aims to cultivate human resources who can apply a scientific approach in the planning, drafting, execution, evaluation and revision of STI policy and strategy. In particular, we intend to equip the administrative officials, practitioners and researchers with advanced skills for policy analysis, policy and strategy planning and implementation.

They will become acquainted with the multiple disciplines, achieve research competence in various social science fields, and gain teaching ability in the higher education.

We host prominent professors who are experts on the research regarding science and technology policy from inside and outside Japan. To achieve more practical research education, the program also accommodates lecturers who are engaged on the frontline of current science and technology policies.

Additionally, the program holds a range of research workshops and seminars and invites eminent researchers and practitioners, current policy administrators, politicians, and corporate representatives, among others.

The program is operated under the support of the Ministry of Education, Culture, Sports, Science and Technology (MEXT) and is provided in cooperation with the National Institute of Science and Technology Policy (NISTEP), the Center for Research and Development Strategy at Japan Science and Technology Agency (JST-CRDS) and the Research Institute of Economy, Trade and Industry (RIETI).

» TARGET GROUP

We would welcome policy practitioners who hold master's degrees and have the necessary practical experience and/or research skills to undertake social science research at the doctoral level. Those who have completed master's courses in relevant areas of study (including natural science and engineering) at other institutions are also welcomed.

» PROGRAM DESIGN

In the first year, students are required to undertake course work and earn a minimum of 17 credits from the courses and seminars.

In the second year, students are expected to pass the Qualifying Examination (QE). After completing QE, students can start writing a dissertation to complete it by the end of the third year.



Patarapong Intarakumnerd
 Associate Director
 Professor

Curriculum	
Category	Course Name
Required Courses	• Research Seminar I-IV
Recommended Courses	• Economics of Innovation • Analysis of Science and Technology Policy Process • Advanced Energy Policy • Energy Data Analysis
Elective Courses	• Introduction to Applied Econometrics (Advanced) • Strategy for Economic Development (Advanced) • Trade and Industrial Development • Quantitative Data Analysis • Bibliometrics and Applications • Management of Innovation • Policy for Higher Education and University-Industry Cooperation • Comparative Analysis of Science, Technology and Innovation Policy: Asian Experiences • Comparative Paths of Science, Technology and Innovation Policy • Roles of Intellectual Property Rights in Globalized World • Science, Technology and Entrepreneurship • Science, Technology and Innovation Policy in Developing Country Context • History of Japanese Science, Technology and Innovation Policy • International Policies on Water and Disasters • Outline of Energy Policy • Energy and Environmental Science & Technology • Energy Security • Energy Policy in Japan

» ORIGIN AND AFFILIATION OF STUDENTS

(as of April 1, 2019)

Indonesia: Indonesian Ministry of Research and Technology

Japan: Ministry of Education, Culture, Sports, Science and Technology (MEXT); Ministry of Economy, Trade and Industry (METI); Nuclear Regulation Agency; Japan Science and Technology Agency (JST); Japan Aerospace Exploration Agency (JAXA); National Center for Global Health and Medicine (NCGM)

Pakistan: Mehran University of Engineering and Technology

Philippines: Ateneo de Manila University

Taiwan: Taipei Economic and Cultural Representative Office in Japan

Thailand: National Science and Technology Development Agency

USA: US Army Research Development and Engineering Command

Viet Nam: Vietnamese Ministry of Science and Technology

» RECENT THESES

• University-Industry Collaboration in Japan and Thailand: Influence of Key Actors' Characteristics and Effect of Modes (2015)

• Societal Impact of Open Access to Research (2017)

• Promoting Scientodiversity through Research Grants (2018)

• Impacts of research team diversity and top management on research commercialization of a public research institute in Thailand (2019)

GRIPS ALLIANCE

GRIPS ALLIANCE, founded in 2013 as a laboratory of the National Graduate Institute for Policy Studies (GRIPS), contributes to the dissemination of democratic governance to the world and to its enhancement through strategic policy research on emerging issues. GRIPS ALLIANCE also develops and delivers high-level training programs in policy studies.

GRIPS ALLIANCE is structurally different from GRIPS. Whereas GRIPS is an educational institute dedicated to the fostering of administrative officers from all levels of government and to conducting policy research in general, GRIPS ALLIANCE is a research institute which conducts more practical high-level policy research by addressing emerging and difficult-to-solve problems through the application of flexible and innovative concepts and frameworks.

For optimum effectiveness, GRIPS ALLIANCE requires human resources capable of exemplary practical and theoretical work in policy studies and of delivery of cutting edge instruction in all aspects of policy. To that end, GRIPS ALLIANCE maintains a solid and well-defined relationship with GRIPS while conducting its activities in an original and autonomous fashion.

» Objectives of GRIPS ALLIANCE

The objectives of GRIPS ALLIANCE are:

- To serve as an interministerial and intersectional policy studies laboratory for use by statesmen and government policymakers;
- To identify problems and raise issues from new perspectives rather than relying on conventional wisdom;
- To provide a venue for discussions based on specialized knowledge relevant to policy questions that are not easily addressed by a single ministry;

- To provide cross-ministerial training programs; and
- To ensure academic freedom and a supportive environment for the achievement of the above objectives.

In its work to achieve the above objectives, GRIPS ALLIANCE:

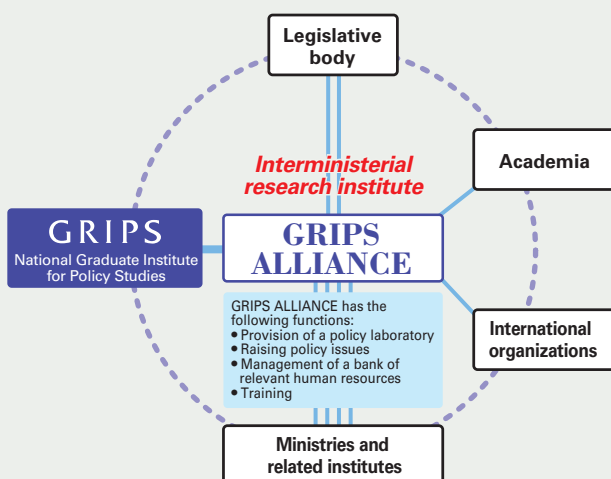
- ① Conducts research in collaboration with statesmen, government officials, and the private sector on policies and strategies which are difficult to place within existing concept arrays or frameworks;
- ② Manages a bank of professional human resources with specialized knowledge and expertise who are available for the solution of pressing policy problems; and
- ③ Provides opportunities for international policy dialogs open to all ministry personnel and to individuals from Japan, Asia (ASEAN), the Americas and Europe who have relevant policy background.

» Organizational Structure

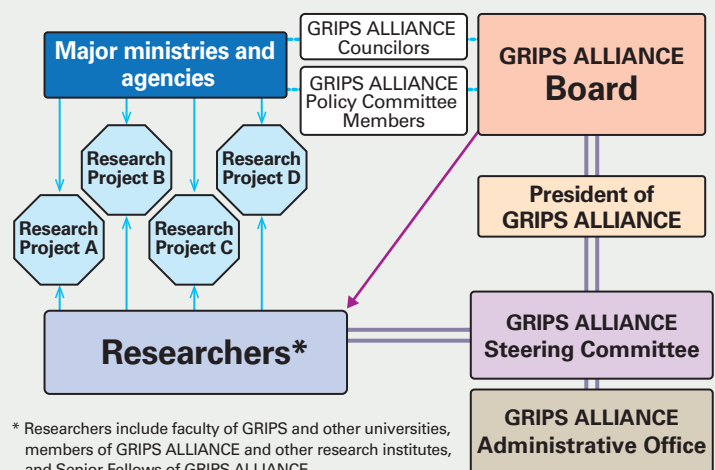
GRIPS ALLIANCE was established within GRIPS, but it operates semi-independently. This reflects the unique structure of GRIPS ALLIANCE, which encourages the participation of ministries and related institutes in GRIPS ALLIANCE research projects so as to create an integrated organic and pluralistic network of highly qualified contributors. The name "ALLIANCE" reflects both the above network and the relationship between GRIPS ALLIANCE and GRIPS.

The operating policy of GRIPS ALLIANCE is shaped and refined in an ongoing manner at the monthly board meetings. Based on the discussions and decisions of the board, GRIPS ALLIANCE organizes research project meetings involving ministries, related institutes, and GRIPS faculty.

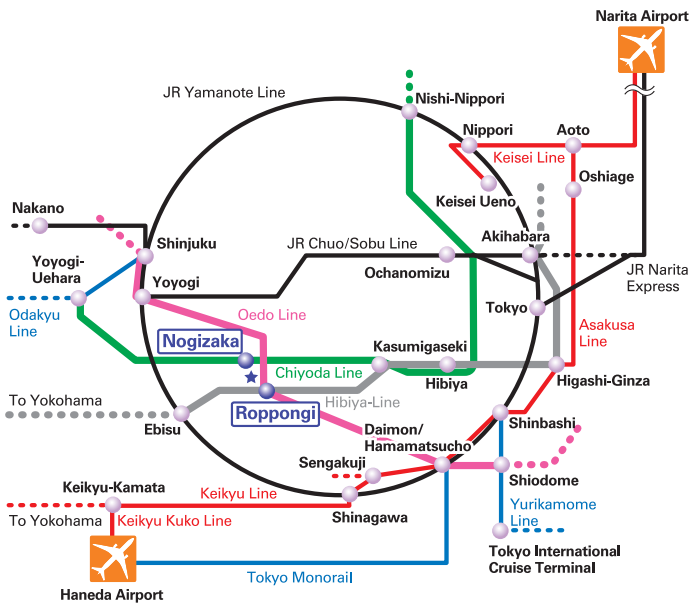
Graphic representation of the relationship between GRIPS ALLIANCE and related agencies



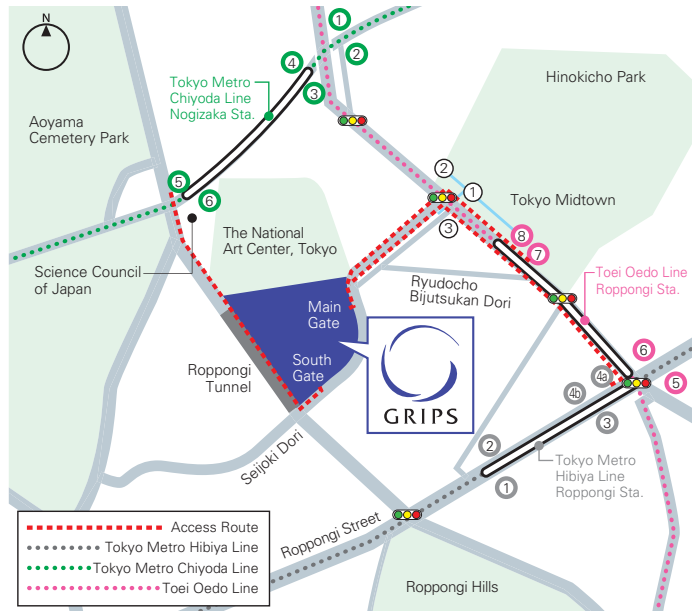
Structure of GRIPS ALLIANCE



Access



From Narita Airport to Roppongi via Tokyo by Narita Express: 1 hour 30 minutes
 From Narita Airport to Roppongi via Nippori by Skyliner: 1 hour 15 minutes
 From Haneda Airport to Roppongi by Tokyo Monorail: 40 minutes
 From Tokyo to Roppongi: 17 minutes



From exit no. 7 at Roppongi station on the Toei Oedo Line: 5 minutes walk
 From exit no. 4a at Roppongi station on the Tokyo Metro Hibiya Line: 10 minutes walk
 From exit no. 5 at Nogizaka station on the Tokyo Metro Chiyoda Line: 6 minutes walk



National Graduate Institute for Policy Studies 2019–2020

National Graduate Institute for Policy Studies (GRIPS)

7-22-1 Roppongi, Minato-ku, Tokyo, 106-8677, Japan

TEL: +81-3-6439-6000 (Reception) FAX: +81-3-6439-6010 (Reception) URL: <http://www.grips.ac.jp/en/>

GRIPS Admissions Office

TEL: +81-3-6439-6046 FAX: +81-3-6439-6050

E-MAIL: admissions@grips.ac.jp

URL: <http://www.grips.ac.jp/en/admissions/index>

Published: August 2019

Editing / Publication: PR team, Planning Office, GRIPS

Design: Satoshi Ando (pickles design)

Photo Copyrights

Photos of Roppongi Campus (p.4, p.5, p.29): Masao Nishikawa

Other photos: GRIPS

©GRIPS 2019 Printed in Japan

