

Basic Socio-Economic Indicators for Selected East Asian Countries

Country	GNP per capita (US\$)		Average annual growth rate of GNP per capita 1965-90 (%)	Life expectancy at birth 1990 (years)	Income distribution		Population below poverty line	
	1976	1990			Lowest 20 percent share of total*	Gini coefficient 1975-88 average	Total (%) 1980-89 average	Rural (%) 1980-89 average
Korea, Republic of	670	5400	7.1	71	-	0.36	16	11
Malaysia	860	2320	4.0	70	4.6	0.48	27	38
Philippines	410	730	1.3	64	5.5	0.45	58	64
Thailand	380	1420	4.4	66	6.1	0.47	30	34
Vietnam	-	550	6.6	70	7.5	0.37	29	36

Note: *Data relate to 1987 (Malaysia), 1985 (Philippines), and 1988 (Thailand).

Sources: Data for Republic of Korea, Malaysia, Philippines and Thailand are compiled based on *World Development Report 1976, 1992, 1993* and *Human Development Report 1992*. Vietnam data are based on *World Development Indicators 2006*.

Structure of Production: Distribution of Gross Domestic Product (%)

Country	Agriculture		Industry		Manufacturing		Services	
	1965	1990	1965	1990	1965	1990	1965	1990
Korea, Republic of	38	9	25	45	18	31	37	46
Malaysia	28	14*	25	43*	9	32*	47	42*
Philippines	26	22	27	35	20	25	47	43
Thailand	32	12	23	39	14	26	45	48
Vietnam	39	22	23	40	12	20	39	38

Note: Manufacturing is a component of industry. Except for rounding errors, the shares of agriculture, industry, and services should sum to 100.

Malaysia data are based on figures in 1994.

Sources: *World Development Report 1992, 1996*, and *World Development Indicators 2006*.

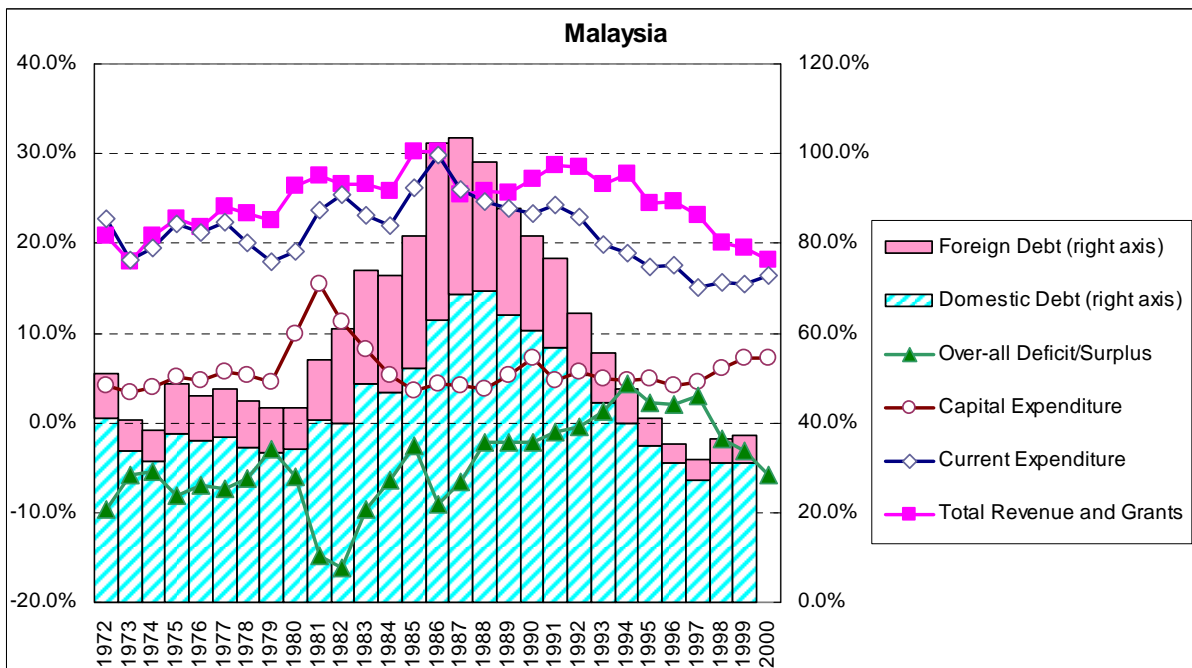
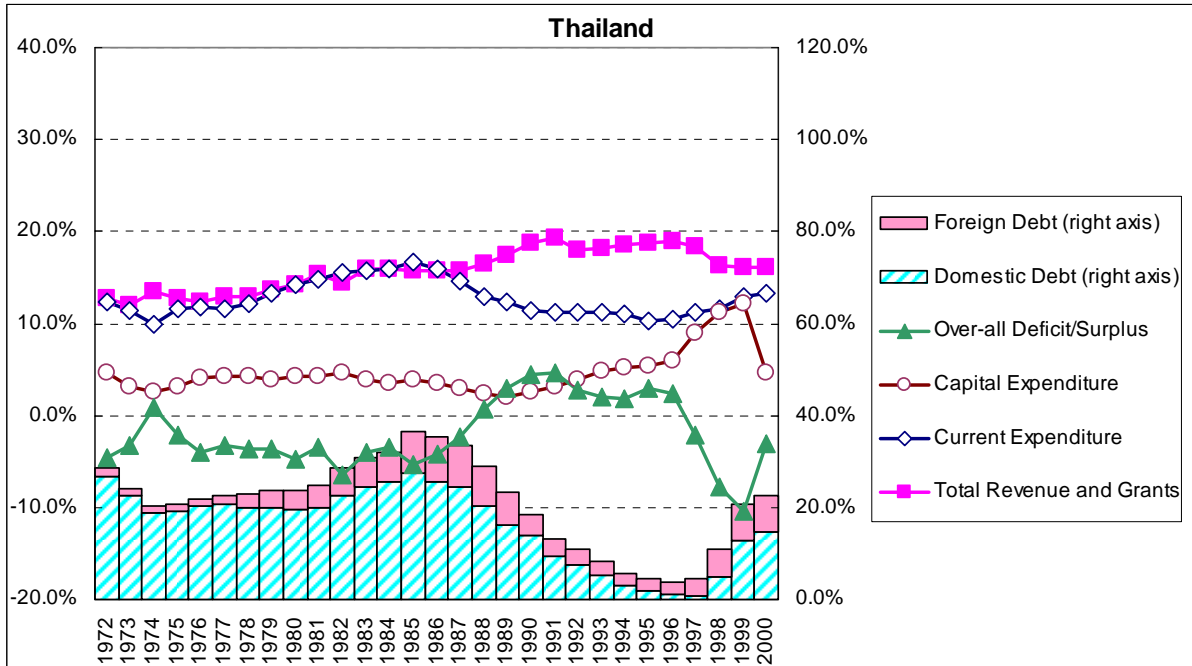
Aid Dependency

	ODA+WB+ADB amount received (US\$)		ODA+WB+ADB as a percentage of central government expenditure		ODA per capita	ODA as a percentage of GNP
	1975	1988	1975	1988	1988	1988
Malaysia	\$181mil	\$391 mil	6.2%	4.7%	\$6.1	0.3%
Philippines	\$314mil	\$1403 mil	13.2%	21.6%	\$14.3	2.2%
Thailand	\$177mil	\$862 mil	8.0%	9.8%	\$10.3	1.0%
Vietnam (2004)	-	\$2013 mil	-	19.2%	\$22	4.5%

Sources: The amount of aid (ODA+WB+ADB, gross) is calculated based on OECD/DAC, *Geographical Distribution of Financial Flows to Aid Recipients 2000/2004*.

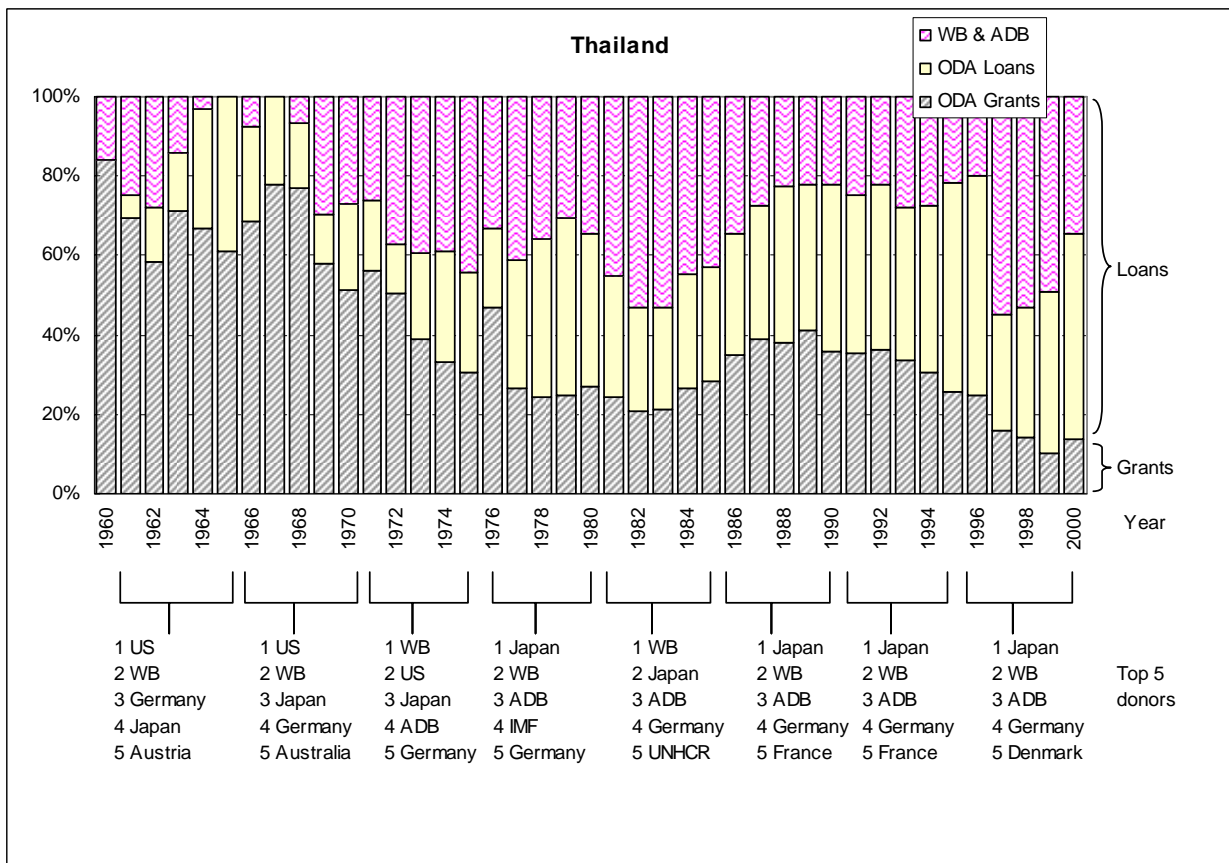
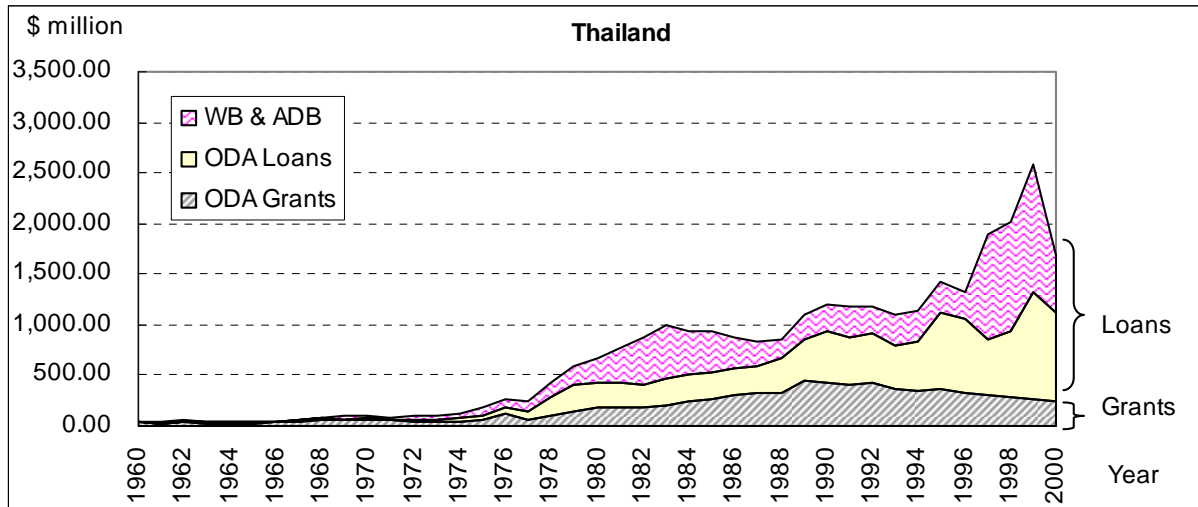
Aid amount as a percentage of expenditures is calculated based on *Key Indicators of Developing Asian and Pacific Countries 1993, 2005*, and *World Development Report 1990*.

Selected Fiscal Indicators
(Percentage of GDP)

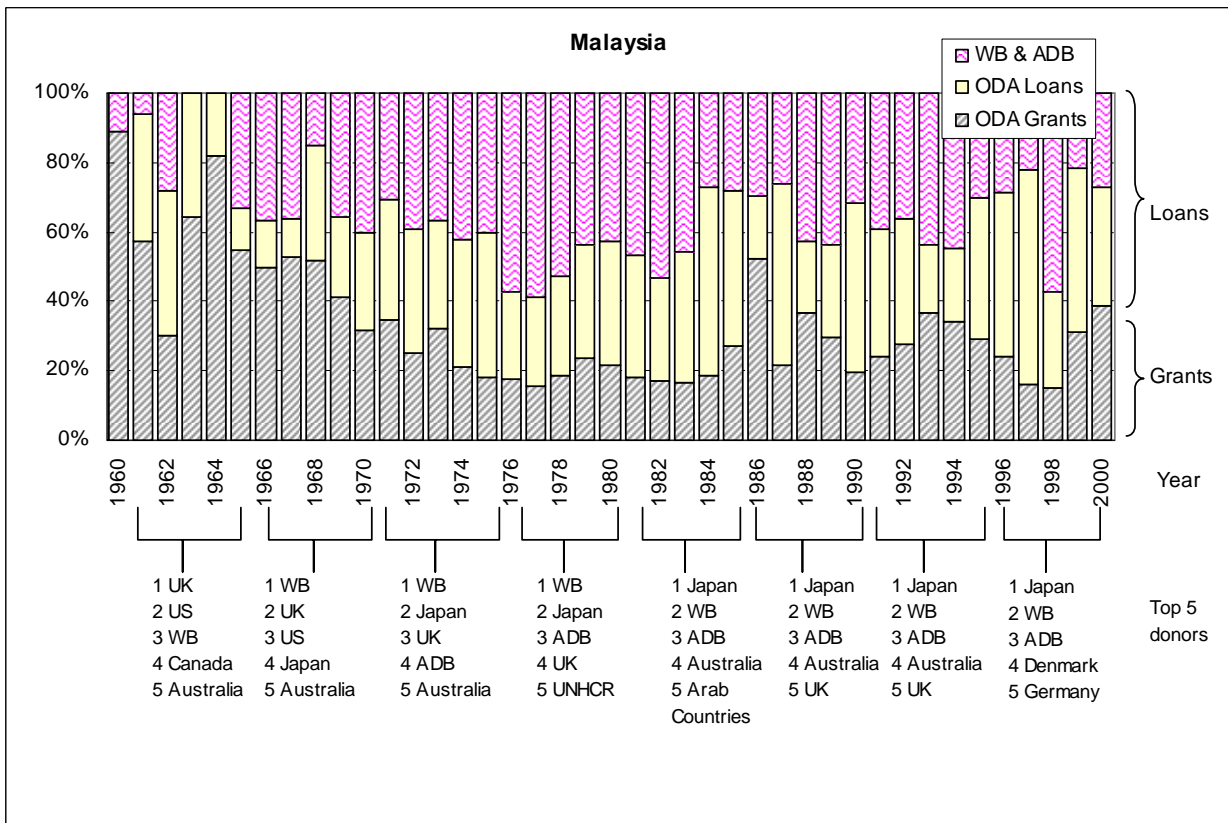
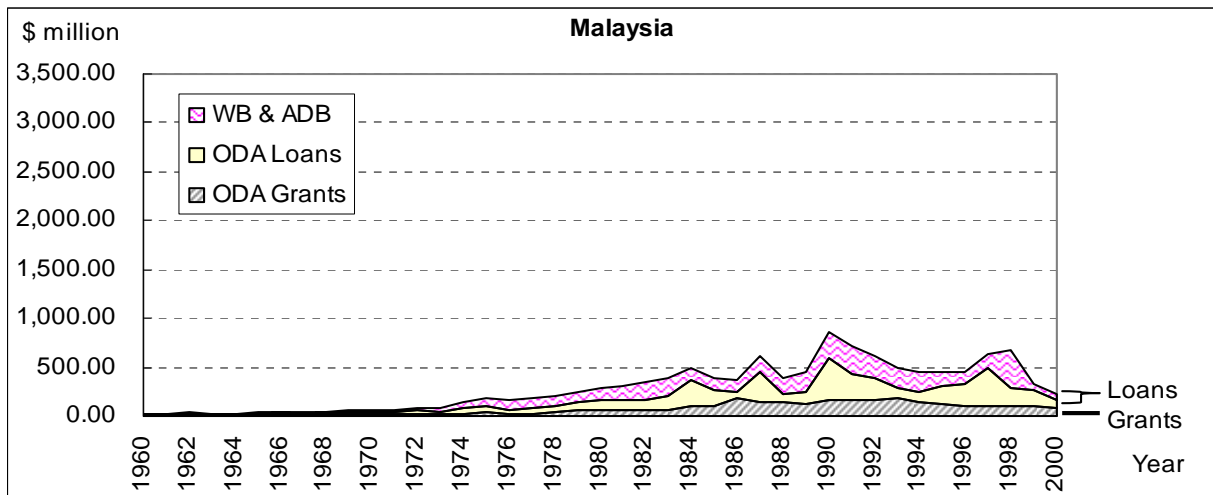


Sources: IMF, *Government Finance Statistics Yearbook* (1983, 1990, 1996, 2002),
IMF, *International Financial Statistics Yearbook* (1992, 1997, 2004),
ADB, *Key Indicators of Developing Asian and Pacific Countries* (2002, 2003).

Mobilization of Official Development Finance



Note: The amount of aid (including WB & ADB) is calculated on a gross disbursement base.
 Source: OECD/DAC, *Geographical Distribution of Financial Flows to Aid Recipients 2000/2004*.



Note: The amount of aid (including WB & ADB) is calculated on a gross disbursement base.
 Source: OECD/DAC, *Geographical Distribution of Financial Flows to Aid Recipients 2000/2004*.