

NATIONAL GRADUATE INSTITUTE FOR POLICY STUDIES

DEGREE PROGRAMS 2014-2015



*Gateway to
Global Leadership*

CONTENTS

Message from the President.....	2
Facts and Figures	4
GRIPS Calendar	5
Degree Programs	6
Master's Programs	
Young Leaders Program (YLP).....	8
One-year Master's Program of Public Policy (MP1).....	9
Two-year Master's Program of Public Policy (MP2).....	10
Macroeconomic Policy Program (MEP)	11
Public Finance Program (PF)	12
Economics, Planning and Public Policy Program (EPP).....	13
Disaster Management Policy Program (DMP)	14
Graduate Program in Japanese Language and Culture (JLC).....	15
5-Year Ph.D. Programs	
GRIPS Global Governance Program (G-cube)	16
Policy Analysis Program (PA)	17
3-Year Ph.D. Programs	
Public Policy Program	18
Security and International Studies Program (SISP)	19
State Building and Economic Development Program (SBED)	20
Disaster Management Program.....	21
Science, Technology and Innovation Policy Program (STI)	22
Graduate Program in Japanese Language and Culture (JLC).....	23
Policy Research Center	24
Executive Development Center for Global Leadership (CGL)	25
New Educational Initiatives	26
GRIPS ALLIANCE	27
Beyond the Classroom	28
Alumni Voices.....	29
Admissions	30
Scholarships	32



The GRIPS Logo

The GRIPS logo design consists of three arcs, formed by six curved lines following a Japanese katana (sword) motif, slicing in toward the center and representing our mission to carve out the future based on historical experience. The arcs represent various independent ideas emerging and blending into a vibrant constellation, while the clear space in the center represents an infinite number of possibilities. The logo uses purple because of that color's association with intelligence and dignity.



Message from the President



Takashi Shiraishi
President

The National Graduate Institute for Policy Studies (GRIPS) aims to cultivate public policy leaders and professionals who will play key roles in democratic governance. To this end, GRIPS pursues three core goals, as stated in its mission statement.

Our first goal is to promote interdisciplinary policy research. GRIPS promotes interdisciplinary as well as issue-oriented approaches to policy studies both drawing on, and going beyond, specific disciplines such as political science, public administration, and economics. At the same time, we promote the study of policy issues as real-world issues, taking advantage of policymaking knowledge and experience accumulated in the Asia Pacific region and Japan.

The second goal is to equip public policy professionals with the expertise and breadth of vision they need to serve effectively on the world stage. GRIPS offers quality education that meets the needs of both students and the government agencies for which they work. Our master's and doctoral programs prepare mid-career public administrators, business people, and politicians for roles as future leaders and policy professionals.

Our third goal is to create a global hub for policy studies. Unique among Japanese universities, GRIPS offers a highly internationalized study environment in every respect, from our student body to our faculty and administrative personnel. Two thirds of our students are from abroad, representing more than 55 countries. Students have the option of pursuing their degrees either in English or in Japanese. We aim to become a leading center for policy research and studies both in the Asia Pacific region and around the world.

Profile

Born in 1950 in Ehime, Takashi Shiraishi has taught at the University of Tokyo (1979-1987), Cornell University (1987-1996), Kyoto University (1996-2005), and National Graduate Institute for Policy Studies (GRIPS) in Tokyo (2005-2009). He served as Standing Executive Member, Council for Science and Technology Policy (CSTP), Cabinet Office (2009-2010). He currently serves as President of GRIPS (since 2011), President of Institute of Developing Economies-JETRO (since 2007), and Non-Standing Executive Member of CSTP, Cabinet Office (since 2011).

What should GRIPS do to achieve these three goals?

First, we enhance our master's programs. Although all of our programs are structured around specific policy issues, students need to gain broader knowledge, across many disciplines, as well as knowledge on Japan's and Asia's experiences in policymaking and policy implementation, in order to be able to deal proactively with policy challenges. With due consideration of the specific interests of our students and of the needs of the governments and agencies they serve, GRIPS strives to provide high-quality, issue-oriented policy-studies training and education in broad perspectives.

Second, we offer strong doctoral programs and promote integral links among them. Specialized and in-depth training in a particular discipline is often emphasized in doctoral studies; however, GRIPS is neither a graduate school of economics nor a graduate school of political science. Our doctoral programs are designed around policy issues and offer intellectually rigorous interdisciplinary training drawing in part upon Japan's and Asia's experience in, and knowledge of, policymaking and policy implementation.

Third, we encourage our faculty members to pursue high-quality, internationally competitive research and support our faculty members' pursuit of interdisciplinary research in collaboration with colleagues from around the world. We also provide research funds to promote such international research interaction.

Fourth, our faculty members include academics who have spent their entire careers as university or policy institute researchers and senior government officials who have many years of ground-level experience in public policy. We will continue to promote synergy between these two types of faculty members in both education and research.

Fifth, an increasing number of professionals, especially from emerging countries in Asia, come to GRIPS to participate in our

short-term executive courses. We will strengthen our system of executive training to meet this growing demand.

Sixth, the key to our development is the presence of faculty and students with diverse backgrounds, expertise, and insights. GRIPS will increase the number of international faculty members and take steps to increase the number of applications from international students.

Seventh, we strongly encourage and promote more everyday interaction between international and Japanese students. Sharing the same space and time, studying together in the same classrooms, thinking together about—and debating—the same issues—such occasions for collaboration and networking can lead to lifelong friendships and connections. We aim to make GRIPS such a meeting ground.

Outstanding faculty who produce world-class research and brilliant students who go on to serve as public policy leaders and professionals throughout the world are the foundation of an internationally competitive university. What we need to do is create an environment that nurtures such excellence. I would like to see GRIPS become a globally renowned university in the field of public policy education and research. We can achieve this only if all members of the GRIPS community share this vision and work together toward achieving our goals.





Old Campus in Saitama (GSPS)



Old Campus in Wakamatsu-Cho, Shinjuku



Roppongi Campus

Brief History of GRIPS

- 1977** Graduate School of Policy Science (GSPS), Saitama University, predecessor of GRIPS established
- 1997** National Graduate Institute for Policy Studies (GRIPS) established (moved to Wakamatsu-cho campus in Shinjuku, Tokyo in 1999)
- 2000** First Master's Degree conferred
- 2003** First Ph.D. conferred
- 2005** Relocated to current campus in Roppongi, Tokyo

Number of Students per Program

(as of October 2013)

Program	Current Students	Graduated Students
Master's		
Young Leaders Program (YLP)	39	259
One-year Master's Program of Public Policy (MP1)	35	458
Two-year Master's Program of Public Policy (MP2)	26	16
Macroeconomic Policy Program (MEP)	32	256
Public Finance Program (PF)	15	194
International Development Studies Program (IDS)	-	314
Economics, Planning and Public Policy Program (EPP)	17	149
Disaster Management Policy Program (DMP)	33	249
Graduate Program in Japanese Language and Culture (JLC)	4	89
5-Year Ph.D.		
[MA] Policy Analysis Program (PA)	11	45
[Ph.D.] Policy Analysis Program (PA)	41	20
3-Year Ph.D.		
Public Policy Program	23	46
Security and International Studies Program (SISP)	20	6
State Building and Economic Development Program (SBED)	5	-
Disaster Management Program	6	1
Science, Technology and Innovation Policy Program (STI)	6	6
Graduate Program in Japanese Language and Culture (JLC)	2	8

This table does not list students in programs conducted in Japanese, except those in the Graduate Program in Japanese Language and Culture.

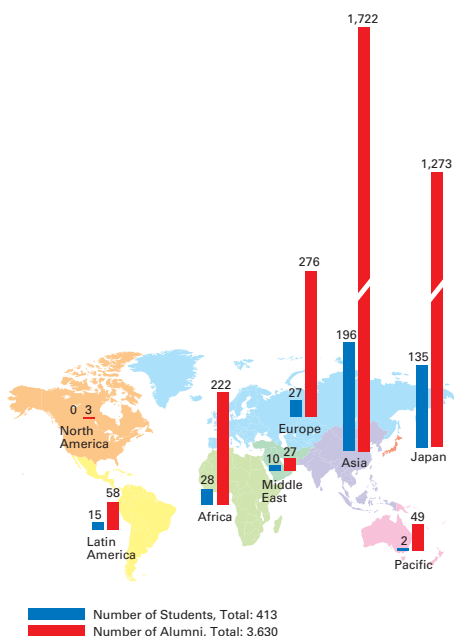
Number of Students by Country and Region

(as of October 2013)

Asia 20 countries & regions	Bangladesh	27	Bhutan	4	Cambodia	4	China	16	India	6
	Indonesia	41	Japan	135	Republic of Korea	8	Laos	3	Malaysia	3
	Maldives	4	Mongolia	2	Myanmar	9	Nepal	4	Pakistan	9
	Philippines	13	Sri Lanka	7	Taiwan	1	Thailand	17	Viet Nam	18
Latin America 8 countries	Bolivia	1	Colombia	3	El Salvador	2	Guatemala	2	Nicaragua	2
	Paraguay	1	Peru	2	Venezuela	2				
Europe (including NIS countries) 15 countries	Armenia	1	Bulgaria	1	Czech Republic	1	Finland	1	France	1
	Georgia	2	Germany	3	Greece	1	Hungary	3	Kyrgyz Republic	2
	Former Yugoslav Republic of Macedonia	1	Netherlands	2	Poland	3	Slovak Republic	1	Uzbekistan	4
Pacific 2 countries	Australia	1	Papua New Guinea	1						
Middle East 2 countries	Afghanistan	5	Turkey	5						
Africa 11 countries	Algeria	1	DR Congo	1	Egypt	2	Ethiopia	3	Ghana	3
	Kenya	2	Malawi	1	South Sudan	1	Tanzania	8	Uganda	5
	Zimbabwe	1								

Total number of countries and regions: 58

Total number of students: 413



Master's Course

- This calendar shows the typical time schedule for international students enrolled in a Master's Program at GRIPS
- Details vary each year and per program
- Refer to this calendar for the first two years of the GRIPS Global Governance Program (G-cube) and the Policy Analysis Program (PA)

Year 1: Applicable Programs	Year 2: Applicable Programs
YLP Young Leaders Program (YLP)	
MP1 One-year Master's Program of Public Policy (MP1)	
MP2 Two-year Master's Program of Public Policy (MP2)	
MEP Macroeconomic Policy Program (One-year MEP)	MP2 Two-year Master's Program of Public Policy (MP2)
PF Public Finance Program (PF)	MEP Macroeconomic Policy Program (Two-year MEP)
EPP Economics, Planning and Public Policy Program (EPP)	
DMP Disaster Management Policy Program (DMP)	
JLC Graduate Program in Japanese Language and Culture (JLC)	
G-cube GRIPS Global Governance Program (G-cube)	G-cube GRIPS Global Governance Program (G-cube)
PA Policy Analysis Program (PA)	PA Policy Analysis Program (PA)



• Fieldtrip

• Welcome party for April enrollment

• Farewell party

Year's Start

Month	Events
OCT	<ul style="list-style-type: none"> • Entrance ceremony and orientation (for October enrollment) • Tokyo orientation tour
NOV	<div style="background-color: #f4a460; text-align: center; padding: 5px;">Medical check-up</div>
DEC	
JAN	<div style="background-color: #f4a460; text-align: center; padding: 5px;">29 Dec-3 Jan New Year holidays (for 2014/2015)</div>
FEB	
MAR	<ul style="list-style-type: none"> • Graduation ceremony for March graduates
APR	<ul style="list-style-type: none"> • Entrance ceremony and orientation (for April enrollment)
MAY	
JUN	
JUL	
AUG	<ul style="list-style-type: none"> • Summer Program
SEP	<ul style="list-style-type: none"> • Graduation ceremony for September graduates

Year's End

Ph.D. Course

- This calendar shows the typical time schedule for international students enrolled in a Ph.D. program at GRIPS
- Details vary each year and per program
- Refer to this calendar for the last 3 years of the GRIPS Global Governance Program (G-cube) and the Policy Analysis Program (PA)

Program	Year	Events
G-cube	Year 1	<ul style="list-style-type: none"> • Coursework • Pass Qualifying Exam to start on dissertation
	Year 2-3	<ul style="list-style-type: none"> • Complete dissertation • Defense • Submit final dissertation • Graduation ceremony
	PA	
PA	Year 1	<ul style="list-style-type: none"> • Coursework • Pass Qualifying Exam to start on dissertation
	Year 2-3	<ul style="list-style-type: none"> • Start on dissertation
	Year 3	<ul style="list-style-type: none"> • Complete dissertation • Defense • Submit final dissertation • Graduation ceremony



Degree Programs

Teaching methods: Lecture, seminar, and tutorial

Assessment: Written examinations and term papers

Terms: 4-term calendar (16-week Fall Term, 8-week Winter Term, 16-week Spring Term, 8-week Summer Term)

Extracurricular: Japanese language classes are provided for international students who wish to study Japanese during their time at GRIPS

The educational mandate of GRIPS is to cultivate high-level policy professionals and researchers. Our degree programs are designed to train students to envision a wide range of solutions to various policy issues.

GRIPS currently offers 17 master's programs (7 of which are taught in English), 2 integrated 5-year master's and doctorate programs, and 7 doctoral programs (5 of which are taught in English). Our degree programs combine broad disciplinary curricula with an applied research focus and foster a commitment to international, national, and regional policy issues. This multifaceted approach provides the basis for a comprehensive understanding of economic development and socio-political change. We update our courses and develop new ones on the basis of ongoing policy research and changing policy issues. The programs at GRIPS are demanding and require a high level of commitment from students.

Master's Programs

Language of Instruction: English, except Graduate Program in Japanese Language and Culture which is conducted in Japanese

Young Leaders Program (YLP) (School of Government, School of Local Governance)

Fosters future national leaders in countries in Asia and other regions

Scholarship: MEXT

One-year Master's Program of Public Policy (MP1)

Educates mid-career professionals in local or national governments and international organizations in the skills needed for policy analysis and policy management

Scholarships: MEXT, ADB

Two-year Master's Program of Public Policy (MP2)

Educates pre- and early-career professionals in local or national governments, international organizations and policy institutes in the technical skills needed to be professional policy analysts

Scholarships: MEXT, ADB

Macroeconomic Policy Program (MEP)

Trains policy makers and professionals using modern macroeconomic theory and policy

Scholarships: IMF, MEXT

Public Finance Program (PF)

Fosters the skills needed to be leaders in taxation and customs

Scholarships: WB (for Tax Course), WCO (for Customs Course)

Economics, Planning and Public Policy Program (EPP)

Trains government officials to contribute to good governance and economic development in Indonesia

Scholarship: Indonesian Government, etc.

Disaster Management Policy Program (DMP)

Fosters disaster risk management experts in developing countries

Graduate Program in Japanese Language and Culture (JLC) (conducted in Japanese)

Fosters leaders in the field of Japanese language education

Scholarship: JF

Abbreviations for Scholarships

ADB	Asian Development Bank
AUN	ASEAN University Network
ICHARM	International Centre for Water Hazard and Risk Management under the auspices of UNESCO
IMF	International Monetary Fund
JF	Japan Foundation
JICA	Japan International Cooperation Agency
MEXT	Japanese Government: Ministry of Education, Culture, Sports, Science and Technology
SEED-Net	Southeast Asia Engineering Education Development Network
WB	World Bank
WCO	World Customs Organization

5-Year Ph.D. Programs

Language of Instruction: English

Master's and Doctorate course

Master's degree not required to enroll

GRIPS Global Governance Program (G-cube)

[Starting in October 2014]

This program aims to equip students to become Leader of Leaders for government, business, and international arenas

Scholarships: G-cube Fellowship, MEXT

Policy Analysis Program (PA)

Educates individuals to research and analyse real-world policy issues

Scholarships: GRIPS Fellowship, MEXT

3-Year Ph.D. Programs

Language of Instruction: English or Japanese by choice, except the Graduate

Program in Japanese Language and Culture, which is conducted in Japanese

Master's degree required

Public Policy Program

This program equips public administrators and researchers in the field of policy studies with advanced skills and practical knowledge for policy analysis

Scholarships: GRIPS Fellowship, MEXT

Security and International Studies Program (SISP)

This program equips students with both academic and practical skills for understanding and solving security and foreign policy issues

Scholarships: GRIPS Fellowship, MEXT

State Building and Economic Development Program (SBED)

This program fosters professionals who will be able to take leadership roles in planning and analyzing policies toward state building and economic development based on the knowledge and analytical skills of political science and economics

Scholarships: GRIPS Fellowship, MEXT

Disaster Management Program

Cultivates professionals who can train young professionals and take a leadership role in the field of water-related risk management

Scholarships: ICHARM Research Assistantship, JICA AUN/SEED-Net

Science, Technology and Innovation Policy Program (STI)

This program equips government officials with the skills needed to design, implement and evaluate policies related to science, technology and innovation based on a scientific approach, and trains other professionals to become experts in the theory and practice of policy making

Scholarships: GRIPS Fellowship, MEXT

Graduate Program in Japanese Language and Culture (JLC) (conducted in Japanese)

This program equips teachers of the Japanese language with the linguistic, cultural, and intellectual knowledge and skills needed to provide high-quality Japanese language education

Recent Ph.D. Theses

Number of Degrees Conferred as of March 2014: 99

- Vietnam's ASEAN Strategic Objectives since the 1986 Doi Moi Reform
- Economic Growth and Monetary Policy in Asian Developing Economies
- Government Financing in Japan: Aging Population, Tax System and Female Labor Participation
- An Inquiry into Mental Health and Help Seeking Behaviors in Japan
- Industrial Pollution Control in China: Human Capital, Environmental Regulation Stringency and the Development of Eco-firms
- Challenges of hydrological analysis for water resources development in semi-arid mountainous regions: A case study in Iran
- Harmonizing Heritage Tourism and Conservation in the Rock-Hewn Churches of Lalibela, Ethiopia
- Effects of Labor Immigration Policies on Indonesian Migrant Workers in Japan and South Korea
- Towards Securitized the Narcotics Problem in India?
- An Inquiry into the Rapid Development of the Pharmaceutical Industry in Bangladesh
- An Economic Inquiry into the International Transfer of Managerial Skills: Theory and Evidence from the Ethiopian Manufacturing Sector
- An Investigation into the Possibility of a Rice Green Revolution in Sub-Saharan Africa: Lessons from the MWEA Irrigation Scheme in Kenya
- The Roles of Managerial Training, Gender and social Networks in Managerial Improvement and Firm Performance: an Experiment with Garment Enterprises in Tanzania
- The Impact of Industrial Agglomeration and the Determinants of Firms' Location Choices in Guangdong
- Essays on New Retirement Income Strategies: Guaranteed Lifetime Withdrawal Benefits, Decision Rules and Time Segmentation
- Migration and Development: Assessing the Impacts of Migration and Remittance on Household Welfare in Nepal
- Five Essays on Banking and Retirement Savings in Indonesia, Asia, and Developed Countries
- On the Transferability of Asian Rice Green Revolution to Rainfed Areas in Sub-Saharan Africa: An Assessment of Technology Intervention in Northern Ghana
- Japan's Southeast Asia Policy and the Cambodian Conflict, 1979-1993: Diplomacy Amid Great Power Politics and Regional Confrontation
- Capital Flows in Thailand: Determinants and Policy Effectiveness
- Mathematical Modeling Analyses for Investigating the Future Expansion of the Electric Power System in Indonesia
- Analysing Aum Shinrikyo's WMD Terrorism and Crimes: An Anatomy of Intentions and Capabilities
- Essays on the Economics and Impacts of Remittances in Kenya
- State-Building in Post-Taliban Afghanistan and the Fragility of Personality-Dependent Order: Reflections on Kandahar and Balkh Provinces
- The Roles of Management Skill Training and Learning from Abroad in the Ethiopian Manufacturing Sector
- Microeconomic Analysis of Public Expenditures in Ghana
- Essays on the Economics of Education in Developing Countries
- Structural Transformation and Poverty Reduction: A View from Three Sectors in Sri Lanka
- Essays on Social Security Systems: Cases of Sri Lanka and Other Emerging Market Countries
- Social Security and Retirement Planning Issues in Emerging Market Countries
- Regional Variation in Risk and Time Preferences and Impact of the Preferences on Educational Investment: Experimental Evidence from Rural Uganda
- The Changing Impacts of Agro-Climates on Cereal Crop Yields: Panel Data Evidence from India and Sub-Saharan Africa
- Monetary Policy & Yield Curve Dynamics: Three Country Perspectives
- Household Consumption and Resource Allocation in Uzbekistan: Evidence and Policies

Young Leaders Program (YLP)

[School of Government, School of Local Governance]

Degrees Offered Master of Public Administration
 Master of Public Policy
Language of Instruction English
Time Schedule Program duration: 1 year
 Enrollment: October
 Graduation: September

Master's Program

Website http://www.grips.ac.jp/en/education/inter_programs/leader/



Masahiro Horie
 Director
 Senior Professor



Mikitaka Masuyama
 Deputy Director,
 School of Government
 Vice President,
 Dean and Professor



Hirofumi Takada
 Deputy Director,
 School of Local Governance
 Professor

Fosters future national leaders in countries in Asia and other regions

Young Leaders Program (YLP) was introduced by the Japanese Ministry of Education, Culture, Sports, Science and Technology in 2001. The objectives of the program are to

1. Foster future national leaders in designated countries
2. Build up comprehensive human networks among the leaders of nations
3. Establish friendly relationships among the countries involved, including Japan
4. Improve the quality of policy making in the participating countries

» TARGET GROUP

This program is open to exceptionally promising young government officials with considerable working experience in the area of public administration. In principle, a minimum of three

years' working experience in the field in the applicant's home country is a prerequisite for admission to the program. Students will be admitted on the basis of an appraisal of their potential to become future leaders at home, to play important roles in their countries' development, and to maintain the lasting friendship and trust of Japan and other countries around the world.

» PROGRAM DESIGN

The curriculum covers a wide range of topics concerning public administration and policy formulation, and also offers the opportunity for intensive discussion with politicians, high-level government officials, corporate directors, journalists, and other Japanese leaders. The program also includes Field Trip/ Workshop I-II and a final paper based on Independent Study/Research.

Curriculum: School of Government	
Category	Course Name
I (Required Courses)	• Introduction to Public Policy Studies • Global Governance: Leadership and Negotiation • Introduction to Japan • Colloquium • Independent Study • Field Trip
II (Recommended Courses)	• Microeconomics I • Essential Microeconomics • Contemporary Japanese Economy • Japanese Economy • Economic Development of Japan • Government and Politics in Japan • International Relations • International Political Economy • International Security Studies • Comparative Politics • Structure and Process of Government
III (Elective Courses)	• Macroeconomics I • Government and Market • Global Development Agendas and Japan's ODA • Public Economics • International Trade • Japanese Financial System • Development Economics • Japanese Foreign Policy • Social Science Questions and Methodologies • Local Government System • Local Government Finance • Local Governance in the Changing World • Innovation, Sustainability and Uncertainty • Selected Topics in Policy Studies I - IV
X (Others)	• Courses offered by the Center for Japanese Language Learning • Courses offered by the Academic Writing Center
Curriculum: School of Local Governance	
Category	Course Name
I (Required Courses)	• Introduction to Public Policy Studies • Local Government System • Local Government Finance • Local Governance in the Changing World • Introduction to Japan • Colloquium • Research Paper • Workshop I - II
II (Recommended Courses)	• Government and Politics in Japan • International Relations • Structure and Process of Government • Global Governance: Leadership and Negotiation • Microeconomics I • Essential Microeconomics • Economic Development of Japan
III (Elective Courses)	• Macroeconomics I • Government and Market • Global Development Agendas and Japan's ODA • Public Economics • International Trade • Japanese Financial System • Development Economics • Japanese Foreign Policy • International Relations of the Asia Pacific • East Asian Economies • Social Science Questions and Methodologies • Innovation, Sustainability and Uncertainty • Selected Topics in Policy Studies I - IV
X (Others)	• Courses offered by the Center for Japanese Language Learning • Courses offered by the Academic Writing Center

» SCHOLARSHIP

(For International Students Only)

- Japanese Government (Ministry of Education, Culture, Sports, Science and Technology [MEXT])

See pp.32-33 for conditions of application and further information

» APPLICATION DEADLINE

October 2014

» CAREER DESTINATIONS

Graduates from the YLP in principle return to their former governmental posts to become leaders in their respective organizations. To name a few:

School of Government

- Rector, Uzbekistan State University of World Languages (Uzbekistan, 2008)
- Advisor to Deputy Minister, Ministry of Finance (Czech Republic, 2007)
- Commissioner, Agra Division, Indian Administrative Service (India, 2007)
- Director General, State Center for Pension Payments of Ministry of Labor and Social Protection of Population (Kazakhstan, 2005)

- Consul General, Ministry of Foreign Affairs, Consulate General of Malaysia, Medan (Malaysia, 2004)
- Deputy Secretary-General, Council of Ministers (Secretariat General Council for Legal and Judicial Reform) (Cambodia, 2004)
- Director General, Civil Service Management Department, Ministry of Home Affairs (Laos, 2002)

School of Local Governance

- Principal Assistant Secretary, Legal Affairs Division, Prime Minister's Department (Malaysia, 2010)
- Deputy Secretary, Ministry of Education & Trainings (Pakistan, 2011)

One-year Master's Program of Public Policy (MP1)

Master's Program

Degrees Offered Master of Public Policy
 Master of Public Administration
Language of Instruction English
Time Schedule Program duration: 1 year
 Enrollment: October
 Graduation: September

Website http://www.grips.ac.jp/en/education/inter_programs/policy/



Nobuhiro Hosoe
 Director
 Associate Professor



Hyoung-kyu Chey
 Deputy Director
 Associate Professor



Makoto Tanaka
 Deputy Director
 Professor

Educates mid-career professionals in local or national governments and international organizations in the skills needed for policy analysis and policy management

The One-year Master's Program of Public Policy (MP1) equips mid-career managers and leaders with the fundamental skills and knowledge needed to be effective managers in the public sector. Students develop familiarity with all phases of the policy cycle. They are required to write a policy report as partial fulfillment of the degree of Master of Public Policy or Master of Public Administration.

» TARGET GROUP

The primary target of MP1 consists of mid-career public officials with excellent academic and work credentials, commitment to public service, and with strong managerial and leadership potential. A secondary target consists of individuals with the capacity for and commitment to high-quality public policy research. Applications are invited from officials and staff of national and local governments, as well as other international and domestic organizations concerned with public policy analysis and management.

» PROGRAM DESIGN

The curriculum is made up of an introductory course in policy studies, policy debate seminars and a wide-variety of recommended and elective courses. All MP1 students are provided a common interdisciplinary and analytical foundation through the required courses. Students acquire more specialized knowledge by taking recommended courses. A wide range of elective courses offers students the opportunity to broaden and/or deepen their academic and pragmatic skills. In particular, GRIPS core courses are strongly recommended for all students at GRIPS, including Public Policy Program students. Practical courses are offered by government officials with extensive experience in actual policy formulation and implementation. The combination of academic and practical knowledge is the hallmark of a GRIPS education.

Curriculum	
Category	Course Name
I (Required Courses)	• Introduction to Public Policy Studies • Policy Debate Seminar I - II
II (Recommended Courses)	• Essential Microeconomics • Essential Macroeconomics • Global Economic History • Development Economics • Diplomatic History of Modern Japan • International Relations • Comparative State Formation • Structure and Process of Government • Comparative Political Economy • Introduction to Quantitative Methods • Introductory Statistics • Comparative Analysis on Science, Technology and Innovation Policy
III (Elective Courses)	• Microeconomics I - II • Macroeconomics I - II • Government and Politics in Japan • International Political Economy • International Security Studies • Political Economy of Modern Japan • Monetary Economics (Money and Banking) • Government and Market • Finance and Economic Growth • Introduction to Applied Econometrics • Poverty Alleviation • Trade and Industrial Development • Game Theory • Gender and Development • Japanese Foreign Policy • Comparative Politics • National Security Policy • Statistics • Quantitative Social Systems Analysis • Leading a Nation in the Changing World • Perspectives of the World • GRIPS Forum • Tutorial I - V • Selected Topics in Policy Studies I - IV • Courses not listed in this table
X (Others)	• Courses offered by the Center for Japanese Language and Culture • Courses offered by the Academic Writing Center

» SCHOLARSHIP

(For International Students Only)

- Japanese Government (Ministry of Education, Culture, Sports, Science and Technology [MEXT])
- Asian Development Bank [ADB]

See pp.32-33 for conditions of application and further information

» APPLICATION DEADLINE

- December 2014: if you apply for the MEXT or ADB scholarship or if you finance yourself
- May 2015: if you finance yourself

» CAREER DESTINATIONS

Graduates from this program are expected to hold executive positions in national or local government and international organizations, or to be researchers in public policy. To list a few of the graduates' career paths:

- Ghana Statistical Service (Ghana, 2012)
- Embassy of Japan in Nigeria (Nigeria, 2012)
- Central Bank of Uganda (Uganda, 2012)
- Department of Finance (Philippines, 2011)
- Nepal Rastra Bank (Nepal, 2011)
- National Policy Advisor, Ministry of Agriculture, Irrigation and Livestock (Afghanistan, 2010)
- Joint Secretary, National Planning Commission Secretariat (Nepal, 2009)

- Acting Head, Dealing Room, Monetary & Credit Operations Department, National Bank of the Kyrgyz Republic (Kyrgyz Republic, 2008)
- Deputy Director General, National Institute of Statistics (Cambodia, 2006)
- Director, Banking and Financial Institution Department, Ministry of Finance (Vietnam, 2005)
- Senior Assistant Secretary, Bangladesh Parliament Secretariat (Bangladesh, 2005)
- Councillor, National Council of Bhutan (Bhutan, 2003)
- Deputy Secretary Foreign Trade, Ministry of Commerce (Pakistan, 2002)

Two-year Master's Program of Public Policy (MP2)

Master's Program

Degree Offered.....Master of Arts in Public Policy
Language of Instruction.....English
Time Schedule.....Program duration: 2 years (minimum 1.5 years)
 Enrollment: October
 Graduation: September

Website http://www.grips.ac.jp/en/education/inter_programs/policy2/



Nobuhiro Hosoe
 Director
 Associate Professor



Hyoung-kyu Chey
 Deputy Director
 Associate Professor



Makoto Tanaka
 Deputy Director
 Professor

Educates pre- and early-career professionals in local or national governments, international organizations and policy institutes in the technical skills needed to be professional policy analysts

The Two-year Master's Program of Public Policy (MP2) provides pre- and early-career professionals and staff members with the technical skills needed to be professional policy analysts. The program provides a strong platform for advanced research (including doctoral studies). Students are required to write a master's thesis as partial fulfillment of the degree of Master of Arts in Public Policy.

» TARGET GROUP

This two year program targets pre- and early career public policy professionals with demonstrated capacity for advanced policy analysis, commitment to public service, and the potential for leadership roles in policy analysis and program management. Applications are invited from officials and staff of national and local governments, as well as universities, think tanks, and other

international and domestic organizations concerned with policy analysis and management.

» PROGRAM DESIGN

The program for two year students (MP2) has a similar structure to that of the one year program, but MP2 students receive more advanced training and guidance in the technical and practical skills needed for public policy analysis. In the first year, MP2 students complete a series of required, recommended, and elective courses. All MP2 students develop a common interdisciplinary and analytical foundation through the required courses, take specialized courses that provide them with strong analytical and quantitative skills, and select from a wide-variety of elective courses. In their second year, students further develop their research skills and utilize them in writing and defending a master's thesis.

Curriculum	
Category	Course Name
I (Required Courses)	• Introduction to Public Policy Studies • Policy Debate Seminar I - II • Independent Study
II (Recommended Courses)	• Essential Microeconomics • Essential Macroeconomics • Global Economic History • Development Economics • Diplomatic History of Modern Japan • International Relations • Comparative State Formation • Structure and Process of Government • Comparative Political Economy • Introduction to Quantitative Methods • Introductory Statistics • Comparative Analysis on Science, Technology and Innovation Policy
III (Elective Courses)	• Microeconomics I - II • Macroeconomics I - II • Government and Politics in Japan • International Political Economy • International Security Studies • Political Economy of Modern Japan • Monetary Economics (Money and Banking) • Government and Market • Finance and Economic Growth • Introduction to Applied Econometrics • Poverty Alleviation • Trade and Industrial Development • Game Theory • Gender and Development • Japanese Foreign Policy • Comparative Politics • National Security Policy • Statistics • Quantitative Social Systems Analysis • Leading a Nation in the Changing World • Perspectives of the World • GRIPS Forum • Tutorial I - V • Selected Topics in Policy Studies I - IV • Courses not listed in this table
X (Others)	• Courses offered by the Center for Japanese Language and Culture • Courses offered by the Academic Writing Center

» SCHOLARSHIP

(For International Students Only)

- Japanese Government (Ministry of Education, Culture, Sports, Science and Technology [MEXT])
- Asian Development Bank [ADB]

See pp.32-33 for conditions of application and further information

» APPLICATION DEADLINE

- December 2014: if you apply for the MEXT or ADB scholarship or if you finance yourself
- May 2015: if you finance yourself

» CAREER DESTINATIONS

Graduates from this program are expected to hold executive positions in national or local government and international organizations, or to be researchers in public policy. To list a few of the graduates' career paths:

- Ghana Statistical Service (Ghana, 2012)
- Embassy of Japan in Nigeria (Nigeria, 2012)
- Central Bank of Uganda (Uganda, 2012)
- Department of Finance (Philippines, 2011)
- Nepal Rastra Bank (Nepal, 2011)
- National Policy Advisor, Ministry of Agriculture, Irrigation and Livestock (Afghanistan, 2010)
- Joint Secretary, National Planning Commission Secretariat (Nepal, 2009)

- Acting Head, Dealing Room, Monetary & Credit Operations Department, National Bank of the Kyrgyz Republic (Kyrgyz Republic, 2008)
- Deputy Director General, National Institute of Statistics (Cambodia, 2006)
- Director, Banking and Financial Institution Department, Ministry of Finance (Vietnam, 2005)
- Senior Assistant Secretary, Bangladesh Parliament Secretariat (Bangladesh, 2005)
- Councillor, National Council of Bhutan (Bhutan, 2003)
- Deputy Secretary Foreign Trade, Ministry of Commerce (Pakistan, 2002)

Macroeconomic Policy Program (MEP)

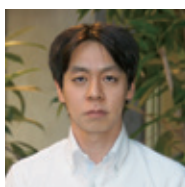
Master's Program

Degrees Offered Master of Public Policy (one-year MEP)
 Master of Arts in Public Economics (two-year MEP)
Language of Instruction English
Time Schedule Program duration: 1 to 2 years
 Enrollment: October
 Graduation: September

Website http://www.grips.ac.jp/en/education/inter_programs/transition/



Roberto Leon-Gonzalez
 Director
 Professor



Makoto Hasegawa
 Associate Director
 Assistant Professor

Trains policy makers and professionals using modern macroeconomic theory and policy

The Macroeconomic Policy Program (MEP) is a professionally oriented program designed to train modern macroeconomic policy makers and professionals who need to understand macroeconomic fluctuations and the roles of monetary and fiscal policies in domestic and global economies. The program aims to enhance the capacity of governments to formulate and implement financial and economic policies in a manner that leads to quality growth. The curriculum deals with macroeconomic and structural aspects, including policies aimed at establishing sound macroeconomic fundamentals, liberalized trade, a robust financial system, and a vast private sector. Ample attention is also given to a broader range of issues, such as roles for government, institution building, the environment and sustainable development.

MEP is a new program developed from the successful tradition of the Transition Economy Program, which has been a partner of the Japan-IMF Scholarship Program for Asia (JISPA) since the inception of JISPA in 1993.

» TARGET GROUP

The program is primarily aimed at government officials and professionals who are involved in designing and implementing macroeconomic policies.

» PROGRAM DESIGN

Both one-year and two-year MEPs are offered. The one-year MEP requires 34 credits for graduation and grants a Master of Public Policy; the two-year MEP requires 44 credits and grants a Master of Arts in Public Economics. Qualified students with tight working schedules are encouraged to apply for the one-year MEP. Qualified candidates who have flexible working schedules, are willing to devote more time to thesis writing, and have a desire to develop more advanced analytical skills may consider the two-year MEP. In their second year, they utilize their technical skills and practical knowledge to write a masters thesis under the guidance of a highly-trained specialist in their chosen field of concentration.

Curriculum: One-year MEP		Curriculum: Two-year MEP	
Category	Course Name	Category	Course Name
I (Required Courses)	<ul style="list-style-type: none"> Introduction to Public Policy Studies Microeconomics I - II Macroeconomics I - II Introduction to Applied Econometrics Public Economics International Finance Policy Paper Seminar I - II 	I (Required Courses)	<ul style="list-style-type: none"> Introduction to Public Policy Studies Microeconomics I - II Macroeconomics I - II Introduction to Applied Econometrics Public Economics International Finance Thesis Seminar I - IV
II (Recommended Courses)	<ul style="list-style-type: none"> Applied Time Series Analysis for Macroeconomics Mathematics for Economic Analysis Statistics Quantitative Social Systems Analysis Monetary Economics (Money and Banking) Government and Market International Trade Contemporary Japanese Economy Japanese Economy Financial Economics Accounting and Financial Management I - II Fiscal and Monetary Policies in Japan Modernization of Financial Sector Strategy of Economic Development Trade and Industrial Development Project Cycle Management and International Development Evaluation Game Theory Economic and Fiscal Reform in Japan Labor Economics Economics of Education and Labor Economics of Law Environmental Economics Resource and Energy Economics Japanese Financial System Development Economics International Political Economy of Money and Finance Foreign Direct Investment Structural Reform and Privatization Public Expenditure Management International Development Policy GRIPS Forum East Asian Economies 	II (Recommended Courses)	<ul style="list-style-type: none"> Applied Time Series Analysis for Macroeconomics Mathematics for Economic Analysis Cost Benefit Analysis I Introduction to Quantitative Methods Statistics Quantitative Social Systems Analysis Monetary Economics (Money and Banking) Government and Market International Trade Contemporary Japanese Economy Japanese Economy Financial Economics Accounting and Financial Management I - II Fiscal and Monetary Policies in Japan Modernization of Financial Sector Strategy of Economic Development Trade and Industrial Development Project Cycle Management and International Development Evaluation Game Theory Economic and Fiscal Reform in Japan Labor Economics Economics of Education and Labor Economics of Law Environmental Economics Resource and Energy Economics Japanese Financial System Development Economics International Political Economy of Money and Finance Foreign Direct Investment Structural Reform and Privatization Public Expenditure Management International Development Policy GRIPS Forum East Asian Economies
III (Elective Courses)	<ul style="list-style-type: none"> For qualified students only Advanced Macroeconomics I - IV Advanced Econometrics I - III Selected Topics in Policy Studies I - III Courses not listed in this table 	III (Elective Courses)	<ul style="list-style-type: none"> For qualified students only Advanced Macroeconomics I - IV Advanced Econometrics I - IV Selected Topics in Policy Studies I - IV Courses not listed in this table
X (Others)	<ul style="list-style-type: none"> Courses offered by the Center for Japanese Language and Culture Courses offered by the Academic Writing Center 	X (Others)	<ul style="list-style-type: none"> Courses offered by the Center for Japanese Language and Culture Courses offered by the Academic Writing Center

» SCHOLARSHIP

(For International Students Only)

- Japan-IMF Scholarship for Asia and Pacific
- Japanese Government (Ministry of Education, Culture, Sports, Science and Technology [MEXT])

See pp.32-33 for conditions of application and further information

» APPLICATION DEADLINE

- December 2014: if you apply for the IMF scholarship or if you finance yourself
- May 2015: if you finance yourself

» CAREER DESTINATIONS

Graduates from this program are expected to hold key positions as policy makers in government agencies, or research institutes.

Below are a few examples:

- Manager, Maldives Monetary Authority (Maldives, 2011)
- Board Member, National Bank of the Kyrgyz Republic (Kyrgyz Republic, 2004)
- Director General, Capital Account Management Department, The State Administration of Foreign Exchange (China, 2003)
- Deputy Minister, Ministry of Finance (Uzbekistan, 2002)
- Director General of International Trade, Ministry of Commerce (Cambodia, 2000)

- Member of Board of Directors & Director of International Department, Bank of Mongolia (Mongolia, 1998)
- Deputy Governor, State Bank of Vietnam (SBV) (Vietnam, 1997)
- Secretary General, Security and Exchange Commission Office (Laos, 1996)

Public Finance Program (PF)

Degree OfferedMaster of Public Finance
Language of InstructionEnglish
Time ScheduleProgram duration: 13 months
 Enrollment: September
 Graduation: September

Master's Program

Website http://www.grips.ac.jp/en/education/inter_programs/finance/



Masako Kurosawa
 Director
 Professor



Takashi Fukushima
 Associate Director
 Professor

Fosters the skills needed to be leaders in taxation and customs

The Public Finance Program started in 2000 and is operated under the full support of the World Bank (WB) and the World Customs Organization (WCO). The major objective of the Public Finance Program is to provide students with the conceptual understanding and technical competence to become leaders in taxation and customs. The program is comprised of two segments: an academic segment common to tax and customs scholars, and a practicum segment which is divided into tax and customs depending on the scholar's stream.

» TARGET GROUP

Government officials from developing countries worldwide who are currently working in tax or customs administration or equivalent departments, with 2-3 years of work experience in the relevant field.

» PROGRAM DESIGN

The academic segment of the program provides rigorous economics-oriented training aimed at developing an understanding of the theoretical, empirical, and institutional aspects of tax and customs policy implementation and administration in the context of developing countries' economic and social development. A practicum at the National Tax Agency or the Customs Training Institute provides an opportunity for students to enhance their learning with hands-on experience in a tax/customs-related work environment and to integrate this experience with their formal education.

Curriculum	
Category	Course Name
I (Required Courses)	<ul style="list-style-type: none"> International Taxation of Japan Practicum at the National Tax Agency Customs Law Practicum in Customs Administration I - III Intellectual Property Rights Enforcement at Border Microeconomics I Theory of Public Finance Workshop in Public Finance Introduction to Public Policy Studies
II (Recommended Courses)	
Highly Recommended	<ul style="list-style-type: none"> Macroeconomics I - II Government and Market Introduction to Applied Econometrics Economics of Tax Policy Local Public Finance Economic and Fiscal Reform in Japan International Trade Development Economics Human Resources Management
	<ul style="list-style-type: none"> Monetary Economics (Money and Banking) Finance and Economic Growth Applied Time Series Analysis for Macroeconomics Poverty Alleviation Strategy of Economic Development Trade and Industrial Development Game Theory Mathematics for Economic Analysis Public Economics Labor Economics Economics of Education and Labor Economics of Law Urban Development and Real Estate Policy International Finance Empirics of Macroeconomic Policies and International Finance Environmental Economics Resource and Energy Economics Japanese Economy Japanese Financial System Econometrics/Quantitative Methods Time Series Analysis Economic Development of Japan
For qualified students only	<ul style="list-style-type: none"> Advanced Econometrics I - II
	<ul style="list-style-type: none"> International Relations International Political Economy Structure and Process of Government Economic Analysis of Urban and Regional Policy International Political Economy of Money and Finance Introduction to Quantitative Methods Accounting and Financial Management I Global Governance: Leadership and Negotiation Fiscal and Monetary Policies in Japan Public Expenditure Management Local Government Finance Selected Topics in Policy Studies I - IV Courses not listed in this table
X (Others)	<ul style="list-style-type: none"> Courses offered by the Center for Japanese Language and Culture Courses offered by the Academic Writing Center

» SCHOLARSHIP

(For International Students Only)

- Joint Japan/World Bank Graduate Scholarship Program (for Tax Course)
- Japan-World Customs Organization Human Resource Development Programme Scholarship (for Customs Course)

See pp.32-33 for conditions of application and further information

» APPLICATION DEADLINE

- February 2015: if you apply for the WB or WCO scholarship or if you finance yourself
- May 2015: if you finance yourself

» CAREER DESTINATIONS

Graduates from this program are expected to return to their host organizations to become fiscal leaders in taxation and customs. In fact, more than 96% of the graduates are still working at the tax and customs bureau in their home countries. To give a few examples of their current positions:

Tax Course

- Assistant Director, Zambia Revenue Authority (Zambia, 1999)
- Directorate General of Taxes, Ministry of Finance (Indonesia, 2001)
- Executive Director, National Statistics Office (Georgia, 2003)
- Deputy Director, State Tax Bureau of Shantou Bonded Zone, Guangdong Province (China, 2005)
- Principal Assistant Director, Inland Revenue Board Malaysia (Malaysia, 2011)

- Deputy Commissioner, Department of Revenue & Customs (Bhutan, 2011)

Customs Course

- Additional Commissioner of Customs, Department of Revenue, Ministry of Finance (India, 2001)
- Assistant to Director General, Customs and Excise Department (Cambodia, 2003)
- Assistant Commissioner, Customs Services Division, Zambia Revenue Authority (Zambia, 2005)
- Deputy Commissioner, Department of Revenue and Customs, Ministry of Finance (Bhutan, 2008)
- Joint Commissioner, Bangladesh Customs, National Board of Revenue (Bangladesh, 2010)
- Additional Commissioner of Customs, WCO Cell, Central Board of Excise and Customs, Ministry of Finance (India, 2012)

Economics, Planning and Public Policy Program (EPP)

Master's Program

Degrees Offered Master of Public Policy issued by GRIPS
 Master's degree issued by an Indonesian University
Language of Instruction English
Time Schedule Program duration: 1 year
 Enrollment: October
 Graduation: September

Website http://www.grips.ac.jp/en/education/inter_programs/economic/



Yonosuke Hara
 Director
 Academic Fellow



Yoshihiro Otsuji
 Deputy Director
 Professor

Trains government officials to contribute to good governance and economic development in Indonesia

Indonesia is undergoing enormous transformation. The “two D’s”—robust democratization and radical decentralization—are fundamentally reshaping the country’s political, economic, and social landscape.

To help Indonesia meet the challenges arising from this transformation, the GRIPS-Indonesia Linkage Master’s Program (LMP) was launched in 2007, designed to develop highly capable central and local government officials who will contribute to Indonesia’s capacity to continue on the road to good governance and economic prosperity. This collaborative academic program is offered by GRIPS and Indonesia’s premier national universities.

» TARGET GROUP

Talented government officials from the central or regional government of Indonesia

» PROGRAM DESIGN

During the two-year program, with the first year in Indonesia and the second one at GRIPS, the students enjoy excellent opportunities to combine theory with practical skills and research with action. Special emphasis is placed on developing core skills in areas that will be valuable to them: economics, political science, public policy, and public management. The program’s approach is multidisciplinary and covers a wide range of topics, allowing the fellows to select the courses that suit their individual needs. GRIPS offers a distinctive learning environment in which the LMP students have abundant opportunities to interact with and learn from a diverse international group of faculty members and their own peers—mid-career government officials from all over the world. In addition, the faculty’s vast network of contacts, along with the campus’ ideal location in the heart of metropolitan Tokyo, provides the students with uniquely easy access to the Japanese policymaking community.

Curriculum	
Category	Course Name
I (Required Courses)	• Independent Study (Policy Paper) • Introduction to Public Policy Studies
II (Recommended Courses)	• Monetary Economics (Money and Banking) • Microeconomics II • Government and Market • Macroeconomics II • Finance and Economic Growth • Introduction to Applied Econometrics • Global Development Agendas and Japan’s ODA • Poverty Alleviation • Strategy of Economic Development • Trade and Industrial Development • Public Economics • Local Public Finance • Economic and Fiscal Reform in Japan • Economics of Education and Labor • Urban Development and Real Estate Policy • International Trade • Resource and Energy Economics • Japanese Economy • Development Economics • Agricultural Development • Economic Analysis of Urban and Regional Policy • East Asian Economies • Agricultural Economics • International Development Policy • Comparative Development Studies of Asia • State and Politics in Southeast Asia • Structure and Process of Government • International Political Economy of Money and Finance • Non-Traditional Security • Foreign Direct Investment • Human Resources Management • Public Expenditure Management • Transport Policy • International Taxation of Japan • Small and Medium Enterprise and Technology • Infrastructure and Regional Development: Lessons from the Past • Introduction to Quantitative Methods • Local Government System • Local Government Finance • Local Governance in the Changing World • Selected Topics in Policy Studies I - IV
III (Elective Courses)	• Courses not listed in this table
X (Others)	• Courses offered by the Center for Japanese Language Learning • Courses offered by the Academic Writing Center

» SCHOLARSHIP

- Indonesian Government, etc.

See pp.32-33 for conditions of application and further information

» APPLICATION DEADLINE

February 2015

» CAREER DESTINATIONS

Graduates from this program are dispatched from the Indonesian government, and are expected to return to their former organizations to become leaders in public policy.



Disaster Management Policy Program (DMP)

Degree OfferedMaster of Disaster Management
Language of InstructionEnglish
Time ScheduleProgram duration: 1 year
 Enrollment: October
 Graduation: September

Master's Program

Website http://www.grips.ac.jp/en/education/inter_programs/disaster/



Shoichi Ando
 Director
 Professor



Hitoshi Ieda
 Associate Director
 Professor

Fosters disaster risk management experts in developing countries

Natural disasters cause crippling economic losses and human tragedy and hamper development, particularly in developing countries, where many people reside in buildings and areas that are vulnerable to natural disasters. To reduce the effects of natural disasters, and human losses in particular, proactive disaster risk management should be promoted in multi-disciplinary ways. To meet this need, disaster management experts must be cultivated through professional education and training so that they may develop and then apply suitable disaster management policies and techniques in line with local conditions.

To enhance the capacity of professionals in developing countries to cope with natural disasters, the National Graduate Institute for Policy Studies (GRIPS) offers a master's degree program in Disaster Management Policy. This program is offered jointly with the International Institute of Seismology and Earthquake Engineering (IISEE) of the Building Research Institute (BRI); the International Centre for Water Hazard and Risk Management (ICCHARM) of the Public Works Research Institute (PWRI); and the

Japan International Cooperation Agency (JICA). This program is administered as a JICA training program under official development assistance from the government of Japan.

» TARGET GROUP

Technical officials, engineers, or researchers in the fields of earthquakes, tsunamis, water-related disasters, and disaster risk-management policy in developing countries

» PROGRAM DESIGN

The program is designed so that students acquire knowledge in seismology, earthquake engineering, tsunami disaster mitigation, and water-related disasters, as well as basic knowledge necessary for disaster risk management; learn theories on which disaster management policies are based while studying Japanese policies and systems; and cultivate the capability to use a problem-solving approach to develop concrete technologies and policies in line with local conditions.

Curriculum: Seismology, Earthquake Engineering and Disaster-Recovery Management & Tsunami Disaster Mitigation

Category	Course Name
I (Required Courses)	• Individual Study
II (Recommended Courses)	• Disaster Management Policies A: from Regional and Infrastructure Aspect • Disaster Management Policies B: from Urban and Building Aspect • Earthquake Hazard Assessment • Earthquake Risk Assessment • Disaster-Recovery Management and Development Assistance • Tsunami Hazard Assessment • Tsunami Countermeasures
III (Elective Courses)	• Earthquake Phenomenology • Characteristics of Earthquake Disasters • Earthquake Circumstance • Information Technology Related with Earthquakes and Disasters • Structural Analysis • Structural Dynamics • Seismic Design • Seismic Evaluation and Retrofitting • Theory of Tsunami • Case Study (Practice for Earthquake Disaster - Recovery Management Policy I) • Case Study (Practice for Earthquake Disaster - Recovery Management Policy II) • Case Study (Practice for Earthquake Disaster - Recovery Management Policy III) • Case Study (Practice for Tsunami Disaster Mitigation Policy) • Selected Topics in Policy Studies I - IV

Curriculum: Water-related Disaster Management

Category	Course Name
I (Required Courses)	• Individual Study
II (Recommended Courses)	• Disaster Management Policies A: from Regional and Infrastructure Aspect • Disaster Management Policies B: from Urban and Building Aspect • Hydrology • Hydraulics • Basic Concepts of Integrated Flood Risk Management (IFRM) • Urban Flood Management and Flood Hazard Mapping • Flood Hydraulics and River Channel Design • Mechanics of Sediment Transportation and Channel Changes • Control Measures for Landslide & Debris Flow • River Ecohydraulics
III (Elective Courses)	• Computer Programming • Basic Practice on Flood Forecasting & Inundation Analysis • Advanced Practice on Flood Forecasting & Inundation Analysis • Site Visit of Water-related Disaster Management Practice in Japan • Selected Topics in Policy Studies I - IV

» APPLICATION DEADLINE

Please contact the local JICA office or the Embassy of Japan

» CAREER DESTINATIONS

Graduates from this program are expected to hold key positions in disaster risk management. They typically work as engineers, seismologists, meteorologists, researchers, or lecturers. To name a few of the successful alumni from this program:

- Assistant Director, Rader and Satellite Division, Malaysian Meteorological Department (Malaysia, 2013)
- Assistant Engineer, Bureau of Hydrology, Ministry of Water Resources (China, 2012)
- First rank specialist, Earthquake Engineering Center, Western Survey for Seismic Protection SNCO, Ministry of Emergency Situations of the Republic of Armenia (Armenia, 2012)
- Assistant Director, Langkawi Tsunami Monitoring Station Network (Malaysia, 2010)



Graduate Program in Japanese Language and Culture (JLC)

Master's Program  Conducted in Japanese

Degrees Offered Master of Japanese Language and Culture
 Master of Japanese Language Education
Language of Instruction Japanese
Time Schedule Program duration: 1 year
 Enrollment: October
 Graduation: September

Website http://www.grips.ac.jp/en/education/inter_programs/graduate/



Natsuho Iwata
 Director
 Associate Professor



Masahiro Konno
 Associate Director
 Professor

Fosters leaders in the field of Japanese language education

The program's goal is to prepare graduates who will become leaders in the academic world of Japanese language education in their own countries. Launched in 2001, the first of its kind in Japan, this program offers an entirely new and interdisciplinary approach to Japanese language education and Japanese studies by helping students gain a thorough understanding of Japanese culture and society. GRIPS offers the program in conjunction with the Japan Foundation Japanese-Language Institute (JFJLI), Urawa. JFJLI is a leading educational institution in Japan with a long tradition of excellence in Japanese language education and in teaching Japanese to foreign educators. Through the Association of Japanese Language and Culture organized by GRIPS and JFJLI, students will have 2 opportunities a year to

make in public about the current Japanese language education of their home countries and Special Theme Research.

» TARGET GROUP

The Graduate Program in Japanese Language and Culture is designed for foreign teachers of the Japanese language abroad.

» PROGRAM DESIGN

The courses are divided into three fields: Japanese language; language education; and society, culture, and region studies. Students have the opportunity to return to their home countries to conduct research as well as to take part in internships to improve their teaching methods.

Curriculum		
Category	Course Name	
I Language	Required Courses	• Academic Japanese • Study of Japanese Language I • Study of Japanese Language II • Linguistics
	Elective Courses	• Japanese Language Education • Methods of Japanese Teaching I • Research Method in Language Learning • Studies in Teaching Profession • Research on Second Language Acquisition
II Language Teaching	Required Courses	• Japanese Language Education • Methods of Japanese Teaching I • Research Method in Language Learning • Studies in Teaching Profession • Research on Second Language Acquisition
	Elective Courses	• Methods of Japanese Teaching II
III Society, Culture and Region	Required Courses	• Education and Culture in Modern Japan • Social System of Modern Japan
	Elective Courses	• Intercultural Communication • Research of Language Education Policy • Japanese Cultural Education Research
IV Special Theme Research	Required Courses	• Seminar for Special Theme I - II
	Elective Courses	• Seminar for Special Theme III • Special Theme Thesis

» SCHOLARSHIP

(For International Students Only)

- Japan Foundation

See pp.32-33 for conditions of application and further information

» APPLICATION DEADLINE

December 2014

» CAREER DESTINATIONS

Graduates of this program are expected to become leaders in Japanese studies in their respective regions. To list a few of the career paths taken by graduates of this program:

- School Director, Alianca Cultural Brasil-Japão (Brazil, 2007)
- Japanese Lecturer, Translation and Interpretation Section Leader, Department of Japanese Studies, the University of Hanoi (Vietnam, 2006)
- Assistant Professor of Japanese & Student Advisor, Institute of Modern Languages, University of Dhaka (Bangladesh, 2005)
- Lecturer, The Japan Foundation Jakarta (Indonesia, 2004)
- Lecturer, Department of Chinese and Japanese Studies, University of Delhi (India, 2002)



GRIPS Global Governance Program (G-cube)

Ph. D. Program

Integrated 5-year Master's and Doctorate Program

Degrees OfferedM.A. in Advanced Policy Studies
Ph.D. in Advanced Policy Studies

Language of InstructionEnglish

Time ScheduleProgram duration: 5 years (Minimum 3 years)
Enrollment: October
Graduation: September

Website http://www.grips.ac.jp/en/education/phd_programs/g-cube/



Tetsushi Sonobe
Director
Vice President and Professor

This program aims to equip students to become Leader of Leaders for government, business, and international arenas

The world is faced with new and serious problems, such as financial crises, terrorism, energy challenges, and environmental issues. Behind them lie conflicting interests, large value gaps, dysfunctional global governance systems, escalating globalization, the rise of emerging states, and drastic changes in the distribution of wealth and power in the world. A new type of leader is needed to address these problems and forge a path to a new age. These leaders require qualities, competencies, and skills that conventional institutions of higher education, which focus on nurturing highly specialized professionals, are not equipped to instill.

Against this background, this new 5-year Ph.D. program aims to produce a new type of leaders for government, business, and international arenas. The program will equip its participants with : (1) a broad historical perspective, which will help them understand the true nature of policy issues and predict their overall impact, (2) strong analytical ability needed to develop insightful and effective policies, and (3) effective communication skills to convey ideas and opinions across languages, cultures, religions, and nationalities.

» TARGET GROUP

This program is open to those with a bachelor's degree from a recognized/accredited university, with the ability and will to become a leader of leaders. Preference is given to those who are interested in pursuing a career as a government official, or in international organizations.

» PROGRAM DESIGN

The curriculum has been designed to enable students to develop a broad historical perspective, strong analytical ability, and good communication skills through lectures, tutorials, and seminars taught entirely in English. A distinctive feature of the program is its teaching staff, which includes internationally renowned guest speakers—many of whom are former ministers and top business leaders—as well as first-rate GRIPS faculty.

This program was selected in 2013 for the Program for Leading Graduate Schools Project by Japan's Ministry of Education, Culture, Sports, Science and Technology (MEXT), under the program "Advanced Program for Global Leaders in the Changing World" and accepts its first class of students in October 2014.

Curriculum	
Category	Course Name
I (Required Courses)	<ul style="list-style-type: none"> Leading a Nation in the Changing World Perspectives of the World Introduction to Public Policy Studies Policy Debate Seminar I - II Policy Workshop
II (Recommended Courses)	<ul style="list-style-type: none"> Diplomatic History of Modern Japan Comparative State Formation Global Economic History International Relations Comparative Political Economy Development Economics Essential Macroeconomics Structure and Processes of Government Comparative Analysis on Science, Technology and Innovation Policy Tutorial I - V Executive Seminar I - III
III (Elective Courses)	<ul style="list-style-type: none"> Microeconomics I Essential Microeconomics Macroeconomics I Introduction to Applied Econometrics Theoretical Foundation of Economic Policy Government and Politics in Japan International Political Economy International Security Studies Political Economy of Modern Japan International Relations in East Asia State and Politics in Southeast Asia (Advanced) Introduction to Quantitative Methods Introductory Statistics

» SCHOLARSHIP

- G-cube Fellowship
- Japanese Government (Ministry of Education, Culture, Sports, Science and Technology [MEXT]) (for international students only)

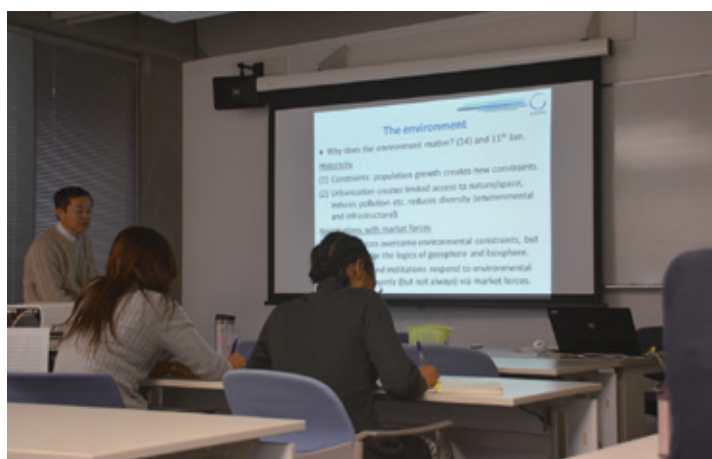
See pp.32-33 for conditions of application and further information

» APPLICATION DEADLINE

February 2015

» CAREER DESTINATIONS

Graduates from this program are expected to actively pursue a career in the government, international organizations or in the private sector, such as global businesses.



Policy Analysis Program (PA)

Ph. D. Program

Integrated 5-year Master's and Doctorate Program

Degrees Offered.....Ph.D. in Public Economics
Ph.D. in Development Economics
Ph.D. in International Economics
MA in Public Economics
MA in Development Economics
MA in International Economics

Language of Instruction.....English

Time Schedule.....Program duration: 5 years* (master's + doctorate)
Enrollment: October Graduation: September

Website http://www.grips.ac.jp/en/education/phd_programs/analysis/

*May vary according to student's ability and academic background



Alistair Munro
Director
Professor



Ryuichi Tanaka
Associate Director
Associate Professor

Educates individuals to research and analyse real-world policy issues

The Policy Analysis Program, launched in 2008, is a 5-year Ph.D. program. A 3 year version is also available to well-prepared students. The program prepares individuals to conduct high level research and to analyse actual policy issues, both theoretically and empirically. To this end, the program requires students to engage in economics and econometrics coursework in the early stages.

» TARGET GROUP

Those who hold a bachelor's and/or master's degree and are interested in pursuing a career as a researcher and analyst of public economics, development economics, and/or international economics are welcome to apply.

» PROGRAM DESIGN

The study of advanced economics and econometrics methodology is compulsory. By studying specific economic

theories and subjects related to policy analysis, students will develop the ability to handle various policy issues. In addition to lectures, there are seminar classes aimed at increasing research skills. Students are also provided with opportunities to consider various practical issues with those who are involved in actual policy formulation and analysis through daily interactions, lectures, tutorials, and workshops.

The coursework requirements are flexible to suit the abilities of students with differing academic backgrounds. The standard enrolment time is 5 years, though the required coursework is expected to be completed within 2-3 years. For students with a relevant masters degree, a 3 year program is also available. Those without a strong background in economics are expected to first study basic subjects for the master's course. All students must pass the qualifying examinations required for writing a doctoral thesis.

Curriculum	
Category	Course Name
I Core Courses (Required)	<ul style="list-style-type: none"> Advanced Microeconomics I - IV Advanced Macroeconomics I - IV Advanced Econometrics I - IV A Course from other disciplines I (*5 year course only) Graduate Seminar I - III
II Recommended Electives I	Public Economics <ul style="list-style-type: none"> Public Economics Labor Economics Economics of Law Competition and Regulatory Economics Urban Economics Environmental Economics Cost Benefit Analysis I - II Experimental Economics
	Development Economics <ul style="list-style-type: none"> Gender and Development Poverty Alleviation Strategy of Economic Development Trade and Industrial Development Development Economics Agricultural Development Advanced Development Economics
	International Economics <ul style="list-style-type: none"> International Trade International Finance Empirics of Macroeconomic Policies and International Finance Economic Development of Japan
III Recommended Electives II	<ul style="list-style-type: none"> Applied Time Series Analysis for Macroeconomics Global Development Agendas and Japan's ODA Game Theory Mathematics for Economic Analysis Economics of Education and Labor Transportation Economics Urban Development and Real Estate Policy Economics of Climate Change Resource and Energy Economics Japanese Economy Japanese Financial System Financial Economics Econometrics/ Quantitative Methods Time Series Analysis Economic Modeling for Policy Simulations Empirical Approach to Policy Analysis Economic Analysis of Urban and Regional Policy Courses not listed in this table (with program director's approval).
	<ul style="list-style-type: none"> Graduate Seminar IV-VII Microeconomics I - II Macroeconomics I - II Introduction to Applied Econometrics

» SCHOLARSHIP

(For International Students Only)

- GRIPS Fellowship
- Japanese Government (Ministry of Education, Culture, Sports, Science and Technology [MEXT])

See pp.32-33 for conditions of application and further information

» APPLICATION DEADLINE

November 2014

» CAREER DESTINATIONS

Graduates from this program are expected to become researchers or analysts in economic and development issues.

» Origin and Affiliation of Students (as of April 1, 2014)

Total 18 Countries

- Bangladesh:** National Board of Revenue, etc.
- Cambodia:** National Bank of Cambodia
- China:** Fudan University, etc.
- Ethiopia:** Haramaya University
- Ghana:** Ministry of Finance and Economic Planning
- Indonesia:** University of Indonesia, etc.
- Japan:** JICA, University of Tokyo
- Kenya:** Ministry of Planning and National Development, etc.
- Korea:** Ministry of Strategy and Finance
- Mongolia:** National University of Mongolia
- Nepal:** National Planning Commission Secretariat, etc.
- Philippines:** Philippine Institute for Development Studies
- Sri Lanka:** University of Sri Jayewardenepura, etc.
- Tanzania:** The University of Dodoma, etc.
- Thailand:** Bank of Thailand
- Uganda:** Office of the President, Central Bank of Uganda
- Vietnam:** State Bank of Vietnam, etc.
- Zimbabwe:** Murray and Roberts

» Recent Theses

- On the Transferability of Asian Rice Green Revolution to Rainfed Areas in Sub-Saharan Africa: An Assessment of Technology Intervention in Northern Ghana (2012)
- The Roles of Managerial Training, Gender and social Networks in Managerial Improvement and Firm Performance: an Experiment with Garment Enterprises in Tanzania (2012)
- The Impact of Industrial Agglomeration and The Determinants of Firms' Location Choices in Guangdong (2012)
- Industrial Pollution Control in China: Human Capital, Environmental Regulation Stringency and the Development of Eco-firms (2013)
- Five Essays on Banking and Retirement Savings in Indonesia, Asia, and Developed Countries (2012)
- Migration and Development: Assessing the Impacts of Migration and Remittance on Household Welfare in Nepal (2012)
- Government Financing in Japan: Aging Population, Tax System and Female Labor Participation (2013)
- Economic Growth and Monetary Policy in Asian Developing Economies (2013)

Public Policy Program

Ph. D. Program

Degrees Offered Ph.D. in Public Policy
 Ph.D. in Government
 Ph.D. in Social Systems Analysis
 Ph.D. in Cultural Policy
Language of Instruction English, Japanese
Time Schedule Program duration: 3 years
 Enrollment: October
 Graduation: September

Website http://www.grips.ac.jp/en/education/phd_programs/public/



Tatsuo Oyama
 Director
 Senior Professor



Takashi Tsuchiya
 Associate Director
 Professor



Shigeru Morichi
 Associate Director
 Academic Fellow

This program equips public administrators and researchers in the field of policy studies with advanced skills and practical knowledge for policy analysis

The Public Policy Program was launched in 2002. Students in this program learn to conduct high-level policy research, master the disciplines required for conducting policy research, write academic research papers in social science, teach at institutions of higher education, and improve their proficiency in foreign languages.

» TARGET GROUP

The program accepts students who have demonstrated high academic capability after completing the Master Program in Public Policy. Those who have completed master's courses in relevant areas of study at other institutions are also welcome. Such prospective students may enter the program after passing internal examinations given by us, in order to confirm their academic ability.

» PROGRAM DESIGN

In addition to lectures and seminars, students also have opportunities to participate in more practical research activities while writing their dissertation. For example, they may get involved in on-going research projects at our Policy Research Center or participate in collaborative research with governmental research organizations jointly working with GRIPS. Within the program, students can belong to diverse fields appropriate to their research interests, such as General, Politics, Economics, Mathematical Analysis, Development, International Development, and Cultural Policy.

Curriculum	
Category	Course Name
Politics	<ul style="list-style-type: none"> • Special Seminar for Policy Process • Special Seminar for Japanese Politics • Advanced International Political Economy • Strategic Studies Research Methodologies • International Relations in East Asia • Japan's Foreign Policy • Diplomatic History of Modern Japan(Advanced) • Special Seminar for Administrative History • Scope and Methods of Case Studies • Social Science Methodology for Qualitative Analysis • Social Science Methodology for Quantitative Analysis • Security and International Studies Dissertation Seminar • Advanced International Relations • Politics and Diplomacy in Postwar Japan • Advanced American Foreign Policy • Advanced Political Economy of Modern Japan • Advanced International Political Economy of Money and Finance • Advanced Comparative Political Economy • Advanced International Relations in Europe • Advanced Development Cooperation Policy • Courses not listed in this table, admitted by each student's advisory committee.
Economic Theory	<ul style="list-style-type: none"> • Advanced Microeconomics I - IV • Advanced Macroeconomics I - IV • Advanced Econometrics I - IV • Advanced Development Economics • Courses not listed in this table, admitted by each student's advisory committee.
Quantitative Analysis	<ul style="list-style-type: none"> • Statistical Data Analysis • Applied Statistics • Mathematics for Planning • Mathematical Modeling Analysis • Operations Research • Optimization and Simulation • Seminar on Statistical Data Analysis • Seminar on Mathematical Modeling • Seminar on Policy Simulation • Courses not listed in this table, admitted by each student's advisory committee.
Development Policy	<ul style="list-style-type: none"> • Sociological Research • Special Seminar for Sociology • Advanced Topics in National Development Policy and Infrastructure Investment • Advanced Design of Infrastructure • Advanced Topics in Transportation System and Planning • Advanced Infrastructure and Regional Development: Lessons from the Past • Advanced Disaster Risk Management • Courses not listed in this table, admitted by each student's advisory committee.
Cultural Policy	<ul style="list-style-type: none"> • Advanced Topics in Cultural Capital and Policy Issues • Advanced Topics in Cultural Policy • Cultural Policy Research Seminar I - III • Heritage Policy System in Japan • Heritage Policy System in Europe • Heritage for Development • Courses not listed in this table, admitted by each student's advisory committee.

» SCHOLARSHIP

(For International Students Only)

- GRIPS Fellowship
- Japanese Government (Ministry of Education, Culture, Sports, Science and Technology (MEXT))

See pp.32-33 for conditions of application and further information

» APPLICATION DEADLINE

November 2014



Security and International Studies Program (SISP)

Degree Offered Ph.D. in International Relations
Language of Instruction English
Time Schedule Program duration: 3 years
 Enrollment: April or October
 Graduation: March or September

Ph. D. Program

Website http://www.grips.ac.jp/en/education/phd_programs/security/



Narushige Michishita
 Director
 Professor

This program equips students with both academic and practical skills for understanding and solving security and foreign policy issues

Established in partnership with the Ministry of Defense and the Ministry of Foreign Affairs of Japan, the Security and International Studies Program (SISP) aims to equip students with academic and practical skills necessary for understanding and solving security and foreign policy issues. Students will conduct in-depth research on historical and contemporary security and foreign policy matters, and engage in theoretical as well as policy debates with program faculty members and outside specialists. Field trips are another important means of enhancing students' understanding of the subject matter.

» TARGET GROUP

We welcome applicants with a master's degree in social sciences especially international relations, political science, economics,

or law. Government officials, military officers, researchers, and journalists with relevant work or academic experience are particularly welcome to apply.

» PROGRAM DESIGN

In the first year, students are required to undertake coursework and earn a minimum of 14 credits from courses and seminars. By the end of the first year, students are expected to pass three written Qualifying Examinations (QE), submit a dissertation prospectus, and pass one oral Qualifying Examination, which is doctoral dissertation prospectus defense. After completing all four Qualifying Examinations, students can start writing a dissertation, which should be completed by the end of the third year.

Curriculum	
Category	Course Name
I Theoretical Courses (Elective)	<ul style="list-style-type: none"> Advanced International Political Economy Advanced International Security Studies Advanced International Political Economy of Money and Finance Strategic Studies Research Methodologies Comparative Politics Transnational Organized Crime and Security
II Regional Courses	<ul style="list-style-type: none"> International Relations in East Asia Politics and Diplomacy in Postwar Japan Advanced Political Economy of Modern Japan Advanced Comparative Political Economy Diplomatic History of Modern Japan (Advanced) Advanced Chinese Foreign Policy Advanced International Relations of the Asia Pacific Advanced International Relations in Europe
III Policy Courses	<ul style="list-style-type: none"> Military Operations, Strategy, and Policy (Advanced) Intelligence and National Security (advanced) (in Japanese) Non-Traditional Security (advanced) Advanced Development Cooperation Policy
IV General Subjects (Elective)	<ul style="list-style-type: none"> Courses not listed in this table, which have been approved by the Program Committee.
V Paper Writing (Core)	<ul style="list-style-type: none"> Security and International Studies Dissertation Seminar

» SCHOLARSHIP

(For International Students Only)

- GRIPS Fellowship
- Japanese Government (Ministry of Education, Culture, Sports, Science and Technology [MEXT])

See pp.32-33 for conditions of application and further information

» APPLICATION DEADLINE

November 2014

» CAREER DESTINATIONS

Graduates of this program are expected to become leading security and foreign policy specialists and practitioners in governmental, non-governmental and international

organizations, research institutions, universities, and other relevant organizations.

» DISSERTATION TOPICS

- Analysing Aum Shinrikyo's WMD Terrorism and Crimes: An Anatomy of Intentions and Capabilities
- Japan's Southeast Asia Policy and the Cambodian Conflict, 1979-1993: Diplomacy Amid Great Power Politics and Regional Confrontation
- The State and Undocumented Migrant Workers
- Responding to the 2008 Food Crisis
- Securitizing Narcotics Problem in India
- Effects of Labor Immigration Policies on Indonesian Migrant Workers in Japan and South Korea
- Vietnam's ASEAN Strategic Objectives since the 1986 Doi Moi Reform



State Building and Economic Development Program (SBED)

Degree OfferedPh.D. in International Development Studies
Language of InstructionEnglish
Time ScheduleProgram duration: 3 years
 Enrollment: October
 Graduation: September

Ph. D. Program

Website http://www.grips.ac.jp/en/education/phd_programs/state_building/



Kaoru Sugihara
 Director
 Senior Professor



Keiichi Tsunekawa
 Deputy Director
 Senior Professor

This program fosters professionals who will be able to take leadership roles in planning and analyzing policies toward state building and economic development based on the knowledge and analytical skills of political science and economics

The State Building and Economic Development (SBED) Program is an interdisciplinary program designed for students who have a master's degree in an area of social sciences and are interested in interactions between politics and the economy in developing countries and emerging economies. The program aims to develop talented individuals who are capable of research and policy formulation requiring advanced knowledge of both political science and economics and who will play key roles in democratic governance in the world.

GRIPS has implemented the Global COE Program entitled "The Transferability of East Asian Development Strategies and State Building" from 2008 to 2012, in which, as the program title indicates, political scientists and economists have promoted joint studies and fostered young researchers and technocrats who will design policies based on the knowledge gained from the results of the advanced studies. The Ph.D. program represents one of the achievements of the Global COE Program and is designed to continue and expand upon the human resource development initiated by the Global COE Program.

During the first year of this program, students take courses in political science, economics and history intensively to acquire advanced knowledge and analytical skills at the Ph.D. level of proficiency. In and after the second year, students concentrate on field work, archival research, analysis, and writing to earn a degree in three years. All courses in the program are offered in English. The dissertation, also to be written in English, must be relevant to state building and economic development, demonstrate a capacity for making original and significant contributions to the existing knowledge base, and deal with a policy issue or have a policy implication. Students who fulfill the requirements will be conferred a Ph.D. in International Development Studies. To help students acquire a good sense of what is actually

happening on the ground in developing countries and emerging economies, each advisory committee comprises faculty members with a wealth of relevant experience in the field and encourages students to conduct field work of their own. The committee not only guides students in the research process of planning, data collection, analysis, and writing but also helps them succeed in publishing journal articles and books.

» TARGET GROUP

Students with a master's degree in a field of social science, such as politics, economics, and international relations, who are interested in the interaction between political and economic processes and outcomes.

» PROGRAM DESIGN

All students are required to take courses in both political science and economics, including political history and economic history. Students will consult with their supervisors regarding the choice of courses based on their academic background, thesis topic, and proposed career path. These courses will allow students to acquire the necessary knowledge and skills for their Ph.D. study. All lectures and examinations will be conducted in English. At the end of the first year, a Qualifying Exam (QE) will be held. In the second year, students will start preparing for their Ph.D. thesis under the guidance of their supervisors. The thesis will be examined by the degree committee members. We expect that it will take three years to complete the coursework and thesis; however, this depends on the students' academic background, ability, and effort. With the international intellectual environment and academic expertise at GRIPS, the SBED program will provide excellent opportunities for students who wish to pursue their studies in state building and economic development.

Curriculum	
Category	Course Name
I Development Economics	<ul style="list-style-type: none"> Theoretical Foundation of Economic Policy Strategy of Economic Development (Advanced) Applied Econometrics Mathematics for Economic Analysis (Advanced) Introduction to Applied Econometrics (Advanced)
II History	<ul style="list-style-type: none"> Advanced Global Economic History Comparative State Formation (Advanced)
III Politics	<ul style="list-style-type: none"> International Relations in East Asia Advanced Political Economy of Modern Japan Advanced Comparative Political Economy State and Politics in Southeast Asia (Advanced) State and Politics in Africa (Advanced)
IV General Subjects	<ul style="list-style-type: none"> Courses not listed in this table, admitted by the advisory committee.
V Courses to be taken after passing qualifying exam	<ul style="list-style-type: none"> State Building and Economic Development Seminar Tutorial I - V

» SCHOLARSHIP

(For International Students Only)

- GRIPS Fellowship
- Japanese Government (Ministry of Education, Culture, Sports, Science and Technology (MEXT))

» APPLICATION DEADLINE

November 2014

» CAREER DESTINATIONS

This program starts in October 2013. Under the guidance of faculty members of its predecessors, the Global COE Program and the 21st Century COE Program, 21 students from 13 countries have successfully earned doctoral degrees and are now in their respective countries working rigorously at governments, universities, research institutes, and international organizations.

See pp.32-33 for conditions of application and further information

Ph. D. Program

Website http://www.grips.ac.jp/en/education/phd_programs/disaster/



Shoichi Ando
 Director
 Professor



Hitoshi Ieda
 Associate Director
 Professor

Cultivates professionals who can train young professionals and take a leadership role in the field of water-related risk management

Water-related disasters are intensifying in frequency and magnitude due to urbanization, industrialization, climate changes etc. throughout the world, causing devastating losses to human lives and livelihoods. They also seriously impede economic development.

It is increasingly evident that capacity development and human empowerment are the foundation for making societies resilient to disasters and increasing sustainable development. To strengthen this foundation, there is an urgent need for societies to increase their capacities for training researchers, educators, and strategy/policy specialists for risk management.

It is to support countries in this respect that the National Graduate Institute for Policy Studies (GRIPS) and the International Centre for Water Hazard and Risk Management (ICHARM), Public Works Research Institute (PWRI) jointly launch a Ph.D. program in October 2010. The broad aim of the program is to nurture professionals who can train researchers and take leadership in planning and implementation of national and international strategies and policies in the field of water-related risk management.

» TARGET GROUP

Technical officials, engineers, and researchers in the fields of water-related disasters and disaster risk management policy in developing countries.

» PROGRAM DESIGN

At the end of the first year, doctoral students are expected to submit a thesis proposal and pass a Qualifying Examination. To be eligible for the Qualifying Examination for Doctoral Dissertation, students must earn a minimum of 8 credits from the courses offered. In addition, if a student is advised to take disaster management courses by his supervising committee, he or she is required to take these for up to 4 credits in Category I. After passing the Qualifying Examination, the students can begin working on their dissertations in the second academic year, aiming to complete the dissertations by the end of the third year.

After starting dissertation work, students are required to report on the research they are planning or working on at Ph.D. Candidate Seminars.

In addition to the completion of the dissertation, at least two papers should be published in relevant peer reviewed international journals before the awarding of the degree. ("Publish" here includes acceptance for publication.)

In addition, there are courses offered at the University of Tokyo. Furthermore, PWRI is seeking candidates for ICHARM Research Assistantship positions. If employed in the positions, students will work at ICHARM as ICHARM Research Assistants. This provides an excellent opportunity to learn and experience the practical work of ICHARM while carrying out individual research. For those interested in the assistantship, visit the PWRI website for further information.

Curriculum	
Category	Course Name
I Disaster Management	<ul style="list-style-type: none"> Advanced Integrated Flood Management Advanced Hydrology Advanced Flood Hydraulics and River Channel Design Advanced Mechanics of Sediment Transportation and River Changes Advanced Urban Flood Management and Flood Hazard Mapping Advanced River Ecohydraulics Advanced Hydraulics
II Development	<ul style="list-style-type: none"> Advanced Disaster Management Policies A: from Regional and Infrastructure Aspect Advanced Disaster Management Policies B: from Urban and Building Aspect
III Others (The University of Tokyo)	<ul style="list-style-type: none"> Advanced River Engineering Advanced Hydrology Urban Disaster Mitigation Engineering

» SCHOLARSHIP

(For International Students Only)
 • ICHARM Research Assistantship
 • JICA AUN/SEED-Net

See pp.32-33 for conditions of application and further information

» APPLICATION DEADLINE

March 2015: If you apply for the JICA AUN/SEED-Net Scholarship, please apply for GRIPS after the primary screening at the AUN/SEED-Net Project.

» CAREER DESTINATIONS

After completing the program, graduates are expected to hold leadership positions in water-related disaster management.

- Water Resources Division, Nippon Koei Co, Ltd (Japan, 2013)



Science, Technology and Innovation Policy Program (STI)

Ph. D. Program

Degrees Offered Ph.D. in Public Policy
 Doctor of Policy Studies
Language of Instruction English, Japanese
Time Schedule Program duration: 3 years
 Enrollment: April or October
 Graduation: March or September

Website http://www.grips.ac.jp/en/education/phd_programs/innovation/



Tateo Arimoto
 Director
 Professor



Hisanori Nei
 Deputy Director
 Professor



Aitsushi Sunami
 Deputy Director
 Professor



Jun Suzuki
 Deputy Director
 Professor

This program equips government officials with the skills needed to design, implement and evaluate policies related to science, technology and innovation based on a scientific approach, and trains other professionals to become experts in the theory and practice of policy making

There is a growing need for science, technology and innovation (STI) to address economic and societal challenges. Many national and local governments, universities, research institutions and companies have been trying to find ways to design more effective and efficient STI policies and strategies to realize innovation and sustainable growth.

This program aims to train individuals who can apply a scientific approach, and who are then able to carry out the planning, design, implementation, evaluation and revision of STI policy and strategy. In particular, we intend to equip the administrative officials, practitioners and researchers with advanced skills for policy analysis, policy and strategy planning and implementation. They will become acquainted with the multiple disciplines, achieve research competence in various social science fields, and gain teaching ability in the higher education.

We host prominent professors who are experts on the research regarding science and technology policy from inside and outside Japan. To achieve more practical research education, the program also accommodates lecturers who are engaged on the frontline of current science and technology policies. Additionally, the program holds a range of research workshops and seminars and invites eminent researchers and practitioners, current policy administrators, politicians, and corporate representatives, among others.

The program is operated under the support of the Ministry of

Education, Culture, Sports, Science and Technology (MEXT) and is provided in cooperation with the National Institute of Science and Technology Policy (NISTEP), the Center for Research and Development Strategy at Japan Science and Technology Agency (JST-CRDS) and the Research Institute of Economy, Trade and Industry (RIETI).

» TARGET GROUP

We would welcome policy practitioners who hold master's degrees and have the necessary practical experience and/or research skills to undertake social science research at the doctoral level. Those who have completed master's courses in relevant areas of study (including natural science and engineering) at other institutions are also welcomed.

» PROGRAM DESIGN

In the first year, students are required to undertake course work and earn a minimum of 11 credits from the courses and seminars. In the second year, students are expected to pass the Qualifying Examination (QE). After completing QE, students can start writing a dissertation to complete it by the end of the third year.

Science, Technology and Innovation Policy Program website:
<http://gist.grips.ac.jp/en/>

Curriculum		
Category		Course Name
I Basic Courses	Core	• Economics of Innovation • Analysis of Science and Technology Policy Process
	Elective	• Econometric • Public Economics • Introduction to Quantitative Analysis • Quantitative Data Analysis • Innovation, Sustainability and Uncertainty • Science and Technology in International Politics
II Advanced Courses	Core	• Introduction to Science, Technology and Innovation Policy
	Elective	• Bibliometrics and Applications • Management of Innovation • Major Technology Fields and Policy Trend • Policy for Higher Education and University-Industry Cooperation • Science and Technology Diplomacy • Comparative Analysis on Science, Technology and Innovation Policy
III Thematic Research	Core	• Research Seminar I - IV
IV General Subject	Elective	• Courses not listed in this table, admitted by the Program Committee.

» SCHOLARSHIP

(For International Students Only)

- GRIPS Fellowship
- Japanese Government (Ministry of Education, Culture, Sports, Science and Technology [MEXT])

See pp.32-33 for conditions of application and further information

» APPLICATION DEADLINE

November 2014 (International),
 January 2015 (Domestic)

» CAREER DESTINATIONS

Graduates from this program are expected to become the government officials, practitioners and researchers with advanced skills for policy analysis, planning and implementation.



Graduate Program in Japanese Language and Culture (JLC)

Degree Offered.....Ph.D. in Japanese Language Education
Language of Instruction.....Japanese
Time Schedule.....Program duration: 3 years
 Enrollment: October
 Graduation: September

Ph. D. Program

Conducted in Japanese

Website http://www.grips.ac.jp/en/education/phd_programs/graduate/



Natsuho Iwata
 Director
 Associate Professor



Masahiro Konno
 Associate Director
 Professor

This program equips teachers of the Japanese language with the linguistic, cultural, and intellectual knowledge and skills needed to provide high-quality Japanese language education

The Graduate Program in Japanese Language and Culture was launched in October 2003 and is run in collaboration with the Japan Foundation Japanese-Language Institute, Urawa (JFJLI). This program aims to nurture foreign teachers and/or professors with a broad knowledge of, understanding of, and insight into Japanese society, culture, and cultural policies. Graduates will be qualified to take an active role in Japanese language education on the international stage either as future leaders in Japanese language education and research, or as administrators, policy makers, or specialists in promoting Japanese language education. Lectures and seminars are given entirely in Japanese, so that students are required for enough knowledge of the Japanese language. Through the Association of Japanese Language and Culture organized by GRIPS and JFJLI, students will have also opportunities to make in public about research.

» TARGET GROUP

Japanese-language teachers or researchers abroad with the potential to become future leaders in Japanese Studies in their own countries.

» PROGRAM DESIGN

The close collaboration between JFJLI and GRIPS enables them to provide comprehensive and high-level education and research opportunities in Japanese language education and culture. The curriculum will be formulated individually in accordance with each student's research plan and academic background. Classes will be taught in lectures as well as through presentation of papers at international conferences and writing a joint research paper. In the first year, students take seminar classes (earning a minimum of 8 credits). In the second year, students take a qualifying examination to start on their doctoral dissertation, take seminar classes (minimum 2 credits) and a special study course (2 credits) and present research results at Ph.D. candidate seminars. In the third year, students submit a doctoral dissertation and undergo evaluation to obtain a doctorate degree.

Curriculum	
Category	Course Name
I Practice Courses (Optional Core)	• Seminar on Second Language Acquisition 1 - 3
	• Seminar on Contrastive Linguistics 1 - 3
	• Seminar on Sociolinguistics 1 - 3
	• Seminar on Language Education Methodology 1 - 3
	• Special Study for Dissertation
II Special Research (Core)	• Seminar on Japanese Linguistics 1 - 3
	• Seminar on Educational Language Policies 1 - 3
	• Seminar on Japanese Culture 1 - 3
	• Seminar on Teacher Education Research 1 - 3
	• Special Study in Japanese Language Education

» APPLICATION DEADLINE

December 2014

» CAREER DESTINATIONS

Graduates from this program are expected to become future leaders in Japanese Studies. To list a few of the graduates of this program:

- Assistant Professor, University of Delhi
- Associate Professor, Department of Japanese Language and Culture, School of Foreign Languages, Peking University
- Lecturer, Kasetsart University
- Professor, Xi'an Jiaotong University
- Professor, College of Foreign Languages, Ocean University of China



As the central organization for research activities at GRIPS, the Policy Research Center promotes policy-oriented, project-based joint research mainly through the following three major activities. First, the Center funds new research projects every year by calling for proposals from faculty members. The adopted projects address specific policy issues facing the world today, and they vary widely; the current projects are as below.

Second, the center runs awards for publication in international academic books and journals, and book publication grant program.

Third, it serves as a platform for research information by gathering and disseminating knowledge and information through holding international conferences and symposia, as well as by publishing discussion papers on the Center website.

In addition, the Center strengthens interpersonal networks and opportunities for joint research by accepting visiting scholars from around the world.

website: <http://www.grips.ac.jp/r-center/en/>

» Research Projects for Academic Year 2014

	Research Project Title	Project Leader
Continued Projects	High Frequency Micro Data Analysis of Power Markets with Unbundling and Renewable Energy	Makoto Tanaka, Professor
	General Equilibrium Analysis of Economies of Networks and Agglomeration	Nobuhiro Hosoe, Associate Professor
	The Nuclear Sharing and Consultation Arrangement in NATO: Origins and Evolution	Yoko Iwama, Professor
	Strategy for Overseas Business Promotion of Medium-and Small Enterprises	Izumi Ohno, Professor
	GRIPS-IIS joint research on renewable energy, urban disaster mitigation management, and human resource development	Tatsuo Oyama, Senior Professor
	GRIPS-UI joint research on building a natural disaster risk management system for the resilient society	Tatsuo Oyama, Senior Professor
	Operations Research for Political Science	Takashi Tsuchiya, Professor
	Impact of government change on continuity of important policies	Harukata Takenaka, Professor
	Private Health Insurance over the Life Cycle – Implications for the Health Care System in an Aging Society	Minchung Hsu, Associate Professor
New Projects	Household decision-making in South Africa: a pilot project	Alistair Munro, Professor
	Project on Evidence-based Life Innovation Policy	Koichi Sumikura, Associate Professor
	A new self-funding approach towards heritage conservation: marketing cultural values with a focus on gastronomy	Emiko Kakiuchi, Professor
	Policy Study on Prefectural Measures against Nankai Through Huge Tsunami	Shoichi Ando, Professor
	Bringing the Central Bank into the Study of Currency Internationalization	Hyoung-kyu Chey, Associate Professor
	The Effect of Moving to a Territorial Tax System on Multinational Activities: Evidence from Japan	Makoto Hasegawa, Assistant Professor
	Designing a Global Environmental Sustainability Index: A Preparatory Study for Interdisciplinary Research for the Future Earth	Kaoru Sugihara, Senior Professor
	Demand for maternal care and the health of mothers and children	Chikako Yamauchi, Assistant Professor
	A comparative study on the governance structure of port management	Naohiko Hibino, Associate Professor
Comparative Study on Disaster/ Crisis Management Policies of Large Cities	Fumio Takeda, Professor	

» Project Example

Bringing the Central Bank into the Study of Currency Internationalization

Project Leader: Hyoung-kyu Chey, Associate Professor

The outbreak of the global financial crisis of 2008-2009 reignited vibrant debate over the future of the global monetary system. One particularly important issue is the question of whether the Chinese renminbi will evolve into a consequential international currency, competing with or even replacing the US dollar as the dominant international currency. The answer to that question ultimately relies on understanding which factors affect currency internationalization. Economists have long addressed this issue by presenting a list of determinants of currency internationalization. Meanwhile, political economy research on the subject has been growing since the crisis, although it is still at an early stage.

However, the literature—including both economics and political economy—on currency internationalization neglects the role of the central bank in the process of currency internationalization. This is a crucial problem, given that the central bank is one of the core stakeholders in currency internationalization in its role as the issuer of currency. Moreover, the role of the central bank regarding currency internationalization is rather unclear inasmuch as theory and actual practice are at odds. From a theoretical

viewpoint, one of the major costs of currency internationalization for the issuing state is constraints on domestic monetary policy, which implies that the central bank is likely to be opposed to or reluctant about the internationalization of its currency. In contrast to such a theoretical expectation, however, history reveals quite the opposite: the People's Bank of China (China's central bank) has been one of the most enthusiastic advocates for renminbi internationalization. In addition, the Federal Reserve (the US central bank) played crucial roles in dollar internationalization during the early 20th century when the dollar began to emerge as an international currency, and today the Fed remains very positive about the role of the dollar as the dominant international currency.

In this context, this research aims to provide an innovative political economy analysis of the preference for or against implementing currency internationalization and the subsequent role of the central bank therein, thus bringing the central bank into the study of currency internationalization. The major study cases of this research will be the People's Bank of China and the Federal Reserve.

Executive Development Center for Global Leadership (CGL)

Director: Senior Professor Masahiro Horie

CGL was established in the National Graduate Institute for Policy Studies (GRIPS) on the 1st of April 2013 in response to an increasing demand for short-term training for government officials, particularly for senior executives, middle management level officials and public policy professionals. GRIPS has responded to specific requests from foreign government organizations by providing tailor-made short-

term training programs matched to specific requests and necessity. By establishing CGL, GRIPS can provide various kinds of short-term training programs more proactively and systematically. Faculty members and other staff members at GRIPS provide support for the programs and activities of CGL.

» Examples of Themes in Short-Term Training Programs

- Leadership development and management in the 21st century
- Public management in general
- Structure and process of government
- Organization management
- Civil service system and human resource management
- Tools of government
- Legal systems and legislative review
- Administrative reform and innovation
- Good governance
- Trust in the government
- Ethics and anti-corruption
- Local governance in general
- Local government administration
- Local government financial administration
- Management of inter-governmental relations
- Public Policy Analysis
- Specific Substantive Policies

» Components of Training Programs

In response to specific demands, the short-term training programs are composed of the following components.

- Lectures (by professors from GRIPS and other universities, government officials, business executives and specialists in research institutions, etc.)
- Field trips or visits to government offices and other places of interests related to themes of training
- Group discussions and workshops with government officials and GRIPS students (foreign government officials)
- Writing policy papers and presentations
- Exchanges with people from Japan

» Specific Short-Term Training Programs by GRIPS

- Training program for vice-minister level officials of the Vietnamese government
- Public management and leadership training program (PMLTP) for Thai high-potential officials
- Training program of competency-based human resource management for officials of the Ministry of Finance of Indonesia
- Seminar on knowledge-based management 2013 for ASEAN countries
- Philippines Bansamoro comprehensive capacity development project 2013
- Japan-IMF macroeconomic seminar for Asia (JIMS) (16~20 Asian countries)
- Short-term training for the Central Party School of the Communist Party of China
- Senior executive development program (SEDP) for Thai provincial governors/vice governors
- Training program for executive officials of Quang Ninh Province of Vietnam
- Training programs for the King Prajadhipok's Institute (KPI) of Thailand
- One-day training programs for senior Bangladesh government officials

» Other activities

In response to specific demands, the short-term training programs are composed of the following components.

- Research project on leadership and management development in Asian countries
- Consulting services regarding human resource development
- Research and studies to enrich the content of training programs
- Lectures using the GRIPS-Distance Learning System



New Educational Initiatives

“Advanced Program for Global Leaders in the Changing World” (FY2013–FY2019)

The world is faced with new and serious problems, such as financial crises, terrorism, energy challenges, and environmental issues. Behind them lie conflicting interests, large value gaps, dysfunctional global governance systems, escalating globalization, the rise of emerging states, and drastic changes in the distribution of wealth and power in the world. A new type of leader is needed to address these problems and forge a path to a new age. These leaders require qualities, competencies, and skills that conventional institutions of higher education, which focus on nurturing highly specialized professionals, are not equipped to instill.

Against this background the GRIPS Global Governance Program (G-cube), a new 5-year Ph.D. program, has been founded with a view

to producing a new type of leaders for government, business, and international arenas. The program will equip its participants with: (1) a broad historical perspective, which will help them understand the true nature of policy issues and predict their overall impact, (2) strong analytical ability needed to develop effective policies, and (3) effective communication skills to convey ideas and opinions across languages, cultures, religions, and nationalities.

This program was selected in 2013 for the Program for Leading Graduate Schools Project by Japan's Ministry of Education, Culture, Sports, Science and Technology (MEXT), and accepts its first class of students in October 2014.

Hub of Institutions for “Science for RE-designing of Science, Technology and Innovation Policy (SciREX)” (FY2011–FY2026)

In January 2012, GRIPS was selected as the Hub of Institutions for Fundamental Research and Human Resource Development for “Science for RE-designing of Science, Technology and Innovation Policy (SciREX)” by the Ministry of Education, Culture, Sports, Science and Technology. Accordingly, GRIPS set up the GRIPS Innovation, Science and Technology Policy Program (GIST), which provides comprehensive doctoral and master's programs in science, technology and innovation (STI) policy. GIST also plans to deliver short-term training courses for executives and practitioners.

As the Hub of SciREX Institutions, GIST will foster the talented

individuals who will shoulder the future of Japan's STI policy through collaborative efforts with other SciREX institutions (e.g., The University of Tokyo, Hitotsubashi University, Osaka University/Kyoto University, and Kyushu University). In addition, by cultivating and strengthening networks with related institutions in Japan and abroad, GIST plans to contribute to the promotion of SciREX and the creation of the relevant community.

To strengthen such efforts, GIST opens Science, Technology and Innovation Policy Research Center in August 2014.

SciREX Hub Institutions' Portal: <http://scirex.grips.ac.jp/>

CAMPUS Asia Student Exchange Program: “Northeast Asian Consortium for Policy Studies” (FY2011–FY2015)

GRIPS, along with KDI School of Public Policy Management (KDIS) and School of Public Policy and Management of Tsinghua University (SPPM), has formed an Asia-wide academic consortium to strengthen

the global competitiveness of higher education and research in the field of public policy in Japan, China, and Korea. These three public policy schools jointly educate promising mid-career professionals in the public and private sectors by reciprocally exchanging graduate students in the double degree and credit transfer schemes. Budgetary support is provided by the “Re-inventing Japan Project” of MEXT as well as the Chinese and the Korean governments.

The student exchange scheme for this program was launched at the tri-state summit in 2009 and will be comparable to the ERASMUS Mundus Programme in Europe in terms of the target of exchanged students and the international academic standard. CAMPUS Asia exchange program provides enlightening experiences to the participating students through our outstanding multi-disciplinary education and equips them with indispensable capacity as personnel who can thrive on the world stage in the age of global governance.

CAMPUS Asia website: <http://www.grips.ac.jp/campusasia/en/>



GRIPS ALLIANCE is an institute established with the aim of accelerating policy innovation and forming a policy community that connects legislative, administrative, and private-sector entities. GRIPS ALLIANCE contributes to strengthening democratic governance inside and outside Japan through strategic, pro-active policy research and the development of high-level policy instruction and training programs. The establishment of GRIPS ALLIANCE has been a goal since the early days of the National Graduate Institute for Policy Studies (GRIPS), a graduate school for mid-career public-sector officials inside and outside Japan. The Alliance will work in tandem with GRIPS and will be an inseparable counterpart.

» Major Functions of GRIPS ALLIANCE

1. Policy studies

GRIPS ALLIANCE will promote a pro-active style of policy studies that draws an innovative framework for new policies, with an overview of administrative areas across ministries and agencies, taking into account retrospective historical considerations as well as cross-national and cross-cultural comparative perspectives.

2. Training

GRIPS ALLIANCE will offer a range of high-level training programs including programs designed for the development of policy experts. The needs for such training programs are increasing in the public-policy sector. Training will also be arranged in line with the international needs of emerging countries.

3. Interaction

GRIPS ALLIANCE is a place for the intellectual training and interaction, through strategic policy research discussions among politicians, public administrators, and independent intellectuals with public awareness.

4. Opportunities for statesmen

GRIPS ALLIANCE is a place where statesmen responsible for Japan's governance can improve their policy skills through interaction and cooperative research with government officials in the forefront of policy execution.

5. Human resource development

GRIPS ALLIANCE is a place where administrative officers can accumulate specialist knowledge and build up networks through policy studies.

6. Internship opportunities for academics

GRIPS ALLIANCE will further the development of policy researchers who wish to have contact with actual policy sites and a sense of policy practice.

GRIPS ALLIANCE has three main purposes.

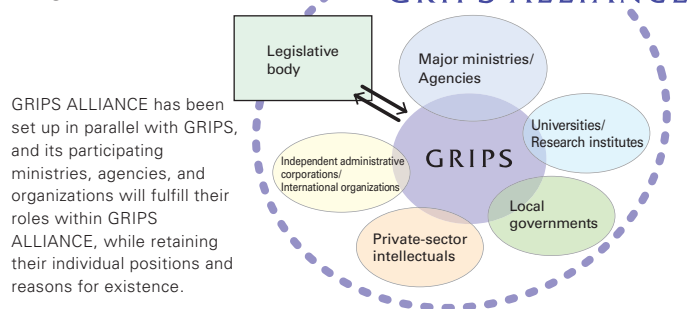
1. To provide a laboratory for legislative, administrative, and private-sector entities to collaboratively formulate strategies which would not spontaneously develop inside individual ministries and agencies.
2. To prepare diverse government executives with relevant expertise, with a view to establishing a merit-based appointment system in which certain government executives are appointed based on political leadership.
3. To provide a place where statesmen can improve their skills and discuss international policies while forming partnerships with leaders of Asian throughout.

» GRIPS ALLIANCE Operation

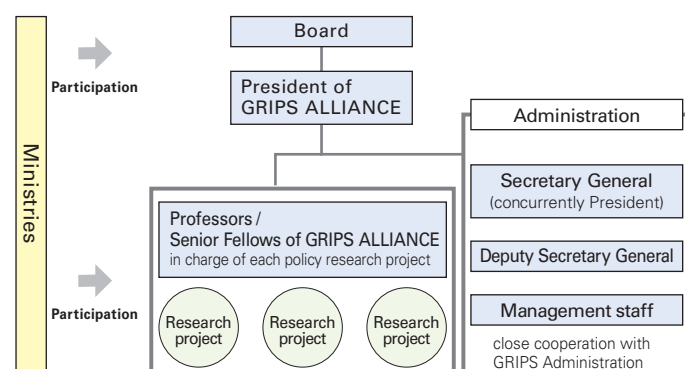
GRIPS ALLIANCE has been set up in parallel with GRIPS, and its participating ministries, agencies, and organizations will fulfill their roles within GRIPS ALLIANCE, while retaining their individual positions and reasons for existence. In that sense, GRIPS ALLIANCE is a pluralistic institution and it will function as a shared institute of the participating ministries and agencies.

To accomplish these goals, GRIPS ALLIANCE will operate autonomously in a manner consistent with GRIPS and it will be governed by the Board of GRIPS ALLIANCE.

Image of GRIPS ALLIANCE



GRIPS ALLIANCE Management System



Beyond the Classroom

Message from the Director of the Student Office



Takashi Tsuchiya
Director of the Student Office
Professor

GRIPS is located at Roppongi, an exciting town in Tokyo which serves as a major center of city cultures including art, music, food, fashion, shopping, performance, etc. GRIPS is also very close to the area of political and business center of Japan. This means that our school enjoys a prestigious position not only in academia but also in enjoying school life and in experiencing the most advanced and active part of Japan.

Definitely Tokyo is one of the largest cities in the world, and very few schools provide such an attractive and stimulating environment for students. The Student Office will do our best to make your Tokyo life happy, comfortable and enjoyable. We are waiting for you to join us. Let's have fun!



“Be inquisitive and have an open-mind. Learn a little about Japan every day, whether it be culture, language, J-pop, politics, simply anything that interests you about Japan. Remember that Japan will always be a part of your life and the more you learn, the more you will appreciate it.”



Brian C. Gozun, Philippines

Dean, College of Business, De la Salle University, Manila
Public Policy Program, 2000; Ph.D., 2008



“GRIPS is an ideal place for knowledge refreshment and the development of new skills after you left school and had some working experience. The professors at GRIPS are quite experienced and well-trained to provide such valuable training.”

Zhu Hong, China

Minister and Deputy Permanent Representative, Permanent Mission of China to the WTO, Ministry of Commerce
Transition Economy Program, 2001

“The intellectual discourses we had at GRIPS with professors and staff, guest speakers, and fellow participants were diverse and interesting. Exchanges of views and experiences took place almost on a daily basis and the more you meet people, the more you learn.”



Ahmad Rozian Abd. Ghani, Malaysia

Consul General, Consulate General of Malaysia in Medan, Indonesia
Ministry of Foreign Affairs
Young Leaders Program, 2004

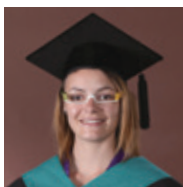


“Opportunities only knock once. Make use of the time at GRIPS to excel in academic work, learn as much as possible from the skilled and experienced professors, and interact with fellow students. Identify and focus on development issues that will benefit your country upon your return. But also, discover Japan by taking time off to visit various places.”

John Akoten, Kenya

Deputy Director for Research, Awareness & Preventive Services, Anti-Counterfeit Agency, Ministry of Industrialization
International Development Studies Program (MA & Ph.D.), 2005

“As a YLP student, I felt both challenged and privileged to be part of the GRIPS network. The academic excellence, the courses relevant to public policy, and the unique opportunities to connect with the Japanese community leaders have enriched my knowledge and experience.”



Anca Popa, Romania

Attaché, Economic Diplomacy Division, Ministry of Foreign Affairs
Young Leaders Program, 2010



“My study at GRIPS enabled me to understand what public policy is all about and in fact it opened up a whole new world to my professional life, which basically made me fancy becoming a public policy analyst one day.”

Tashi Wangmo, Bhutan

Member, National Council of Bhutan
Public Policy Program, 2003

The Alumni Network

One of the greatest resources and joys of studying at GRIPS is the diversity of the student community. The connections you make at GRIPS are a valuable part of your degree. The GRIPS Alumni Network will ensure they are lifetime bonds by keeping you in touch with fellow alumni and the school.

As a GRIPS graduate, you join an impressive network of more than 3,600 alumni who are actively shaping future policies in more than 100 countries around the world. Connectivity and communication sit at the heart of the alumni community. We offer a variety of ways to remain engaged with GRIPS and strengthen your ties with fellow alumni around the globe. These include alumni reunions, seminars, a searchable alumni directory and online networking opportunities utilizing social media such as Facebook and LinkedIn.

Many GRIPS alumni occupy prominent positions in the public sector. To name just a few: Mr. Lukman Hakim is Chairman of the Indonesian Institute of Sciences (LIPI); Mr. Nestor Aldave Espenilla Jr. is Deputy Governor of the Central Bank of the Philippines; Mr. Le Minh Hung is serving as Deputy Governor of the State Bank of Vietnam; Mr. Melis Mambetjanov, a former finance minister, is currently the Chairman of the State Financial Intelligence Service of the Kyrgyz Republic; Mr. Bakhrom Yusupov has been appointed as First Deputy Minister of Finance in Uzbekistan; and Ms. Tashi Wangmo has been re-appointed as Councillor in the National Council as a special nominee of His Majesty the King of Bhutan.

For more on the GRIPS alumni, please check out the “Alumnus of the Month” feature on our website.

<http://www.grips.ac.jp/en/alumni/almo/>

» The Student Office Staff

- Organizes orientation programs for all incoming students and helps arriving international students get organized and settled in Japan
- Organizes a number of social events and activities, including homestay programs, field trips, and concerts, and works to promote meaningful interaction and understanding between Japanese and nationals of other countries
- Offers advice on daily life and routine concerns and provides support in case of personal problems

To be eligible for admission to the master's programs, an applicant must hold a bachelor's degree or its equivalent, must satisfy the English language requirements, and must be in good health.

Admissions Schedule

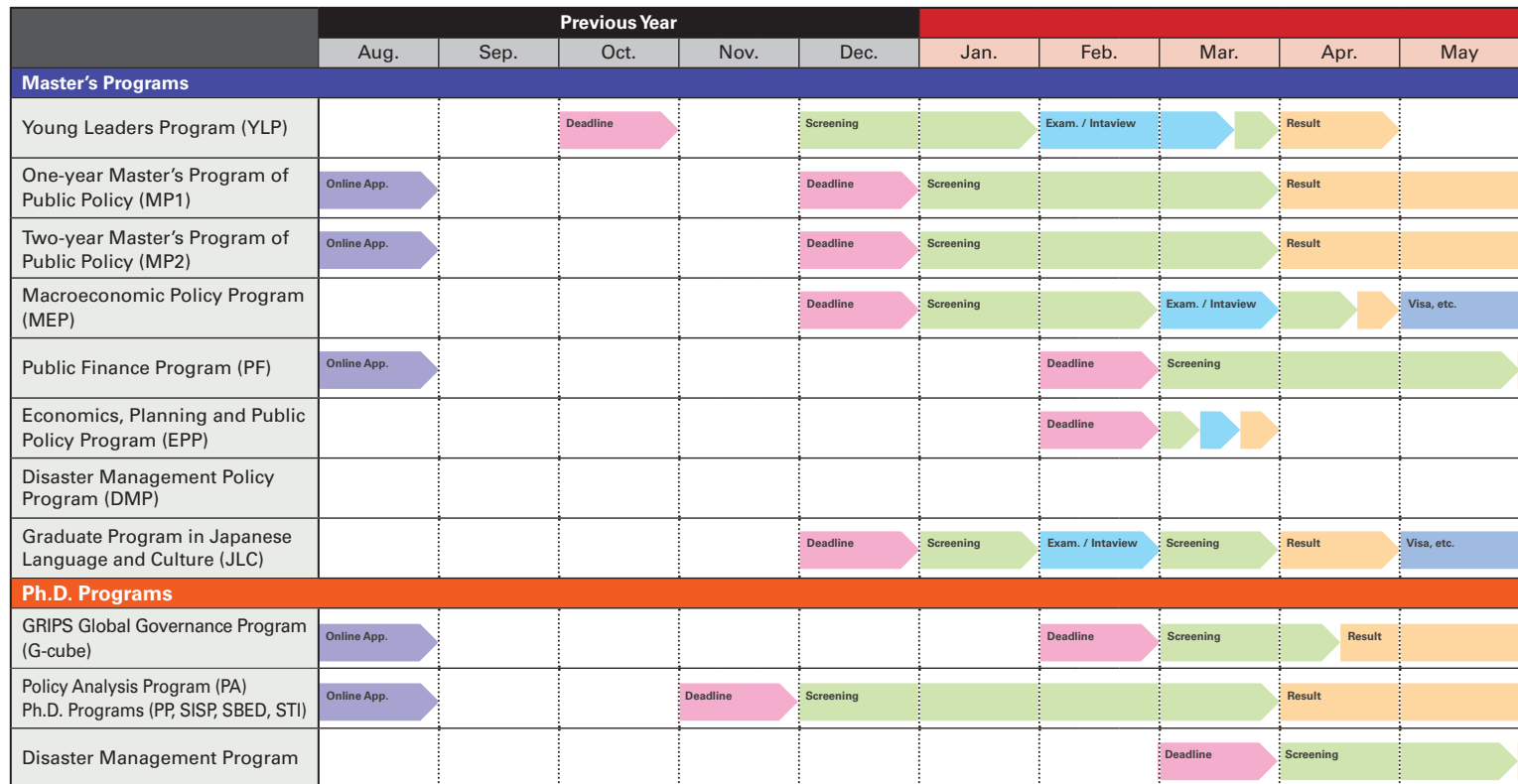
These charts give an overall view of the admissions schedule at GRIPS. Schedule may vary depending upon the sponsor's decision. Application procedures differ for each program. Online applications are accepted for some of the international programs. Screening for admission usually takes place within four months of the application

deadline for each program.

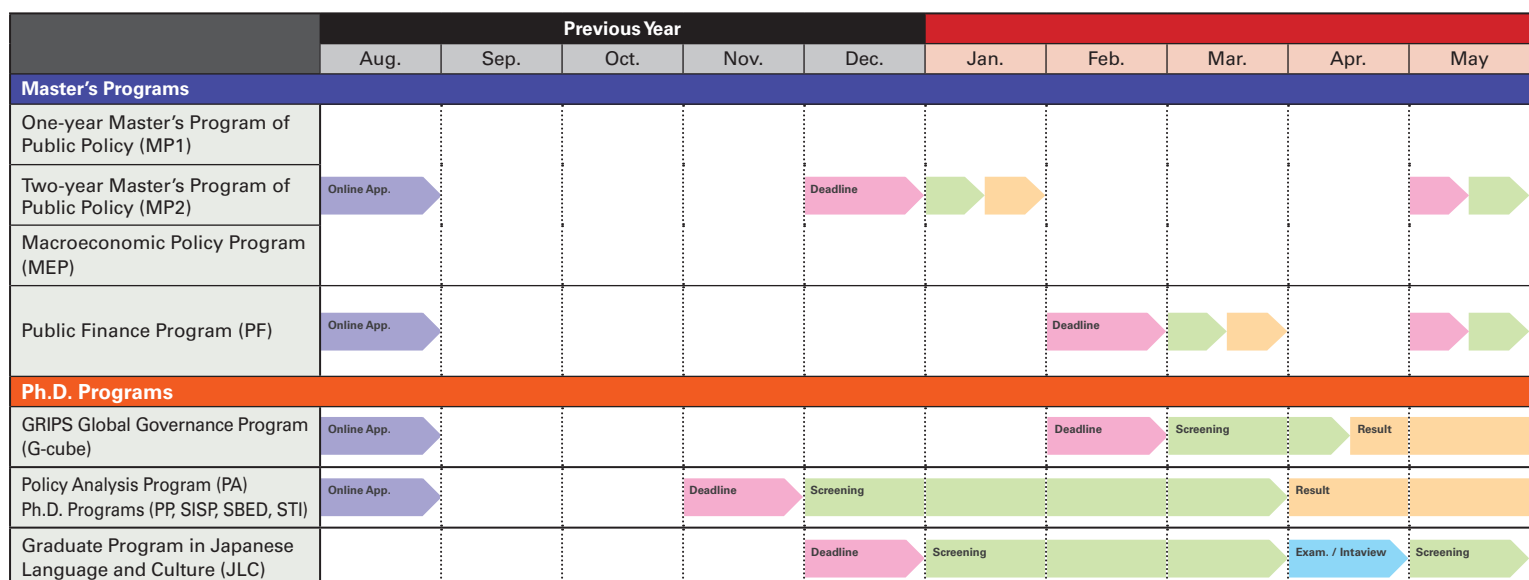
The final results are announced each year by the end of July at the latest. Please visit our website for full details and the latest information.

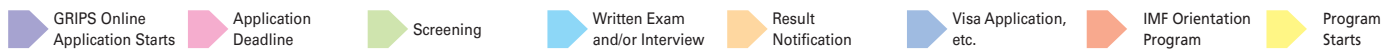
<http://www.grips.ac.jp/en/admissions/index/>

➤ Admissions Schedule for Candidates applying for Scholarships



➤ Admissions Schedule for Externally-Funded and Self-financed Candidates





Arrows refer to general schedule. Specific dates will be posted on our website.

Year of Enrollment					Remarks
Jun.	Jul.	Aug.	Sep.	Oct.	
	Visa, etc.			Program Starts	Application should be submitted to the Japanese Embassies. Application deadline varies depending on each country.
	Visa, etc.			Program Starts	Application should be submitted to the GRIPS Admissions Office.
	Visa, etc.			Program Starts	Application should be submitted to the GRIPS Admissions Office.
	IMF Orientation Program			Program Starts	Application should be submitted to the IMF office. IMF Orientation Program starts in July or August, depending on current TOEFL score.
Result	Visa, etc.		Program Starts		Application should be submitted to the GRIPS Admissions Office. Tax and Customs Courses start in September.
	Visa, etc.			Program Starts	Application should be submitted to the GRIPS Admissions Office.
	Screening	Result	Visa, etc.	Program Starts	Application should be submitted to the JICA overseas office. *This schedule applies to JICA training applicants only. Other applicants should contact the Admissions Office for an alternate schedule.
				Program Starts	Application should be submitted to the Japan Foundation overseas office.
	Visa, etc.			Program Starts	Application should be submitted to the GRIPS Admissions Office.
	Visa, etc.			Program Starts	Application should be submitted to the GRIPS Admissions Office.
Result	Visa, etc.			Program Starts	Application should be submitted to the GRIPS Admissions Office.

Year of Enrollment					Remarks
Jun.	Jul.	Aug.	Sep.	Oct.	
	Visa, etc.			Program Starts	Application should be submitted to the GRIPS Admissions Office. Applicants are encouraged to choose the early deadline of December, if it is possible to submit all the application and supporting documents including a financial statement by then. The early deadline guarantees early screenings in January, and notification of admissions decisions follows.
	Visa, etc.		Program Starts		Application should be submitted to the GRIPS Admissions Office. Applicants are encouraged to choose the early deadline of February, if it is possible to submit all the application and supporting documents including a financial statement by then. The early deadline guarantees early screenings in March, and notification of admissions decisions follows.
	Visa, etc.			Program Starts	Application should be submitted to the GRIPS Admissions Office.
	Visa, etc.			Program Starts	Application should be submitted to the GRIPS Admissions Office.
Result	Visa, etc.			Program Starts	Application should be submitted to the GRIPS Admissions Office.

Scholarships

Full scholarships are available for exceptionally qualified candidates who have been accepted for study at GRIPS. These scholarships are provided by the Japanese government (Ministry of Education, Culture, Sports, Science and Technology [MEXT]) and international organizations, as well as GRIPS. You may apply for one of them when you apply for admission.

Monthly stipend and eligibility requirements are subject to change.

For the latest information, please visit our website and contact the Admissions Office.

Programs	Scholarships	Monthly Stipend (Yen)	Eligibility Requirements	Contact/Application Address
Master's Programs				
Young Leaders Program (YLP)	Japanese Government (MEXT) Scholarship	242,000	<ul style="list-style-type: none"> Under 40 years of age on October 1 of the year of enrollment Exceptionally talented government officials from the following countries <p>School of Government P. R. China, Rep. of Korea, Indonesia, Malaysia, Philippines, Singapore, Thailand, Brunei Darussalam, Vietnam, Laos, Myanmar, Cambodia, Mongolia, Kazakhstan, Kyrgyz Republic, Turkmenistan, Uzbekistan, Bangladesh, India, Pakistan, Sri Lanka, Australia, Hungary, Czech, Slovakia, Poland, Bulgaria, Romania, Turkey (29 countries in all)</p> <p>School of Local Governance P. R. China, Indonesia, Malaysia, Philippines, Thailand, Vietnam, Laos, Myanmar, Cambodia, Mongolia, Kazakhstan, Uzbekistan, India, Pakistan, Hungary, Czech, Poland, Romania, Rep. of Korea, Turkey (20 countries in all)</p>	Embassy of Japan of each eligible country
	One-year Master's Program of Public Policy (MP1)	Japanese Government (MEXT) Scholarship	147,000	<ul style="list-style-type: none"> Under 35 years of age on April 1 of the year of enrollment Preference is given to government officials and senior students who are planning careers as government officials Non-resident of Japan
Asian Development Bank-Japan Scholarship Program (ADB-JSP)		147,000	<ul style="list-style-type: none"> Under 36 years of age on April 1 of the year of enrollment Citizens of ADB developing countries At least 2 years' work experience Preference is given to those currently working as government officials 	GRIPS Admissions Office online application
Two-year Master's Program of Public Policy (MP2)	Japanese Government (MEXT) Scholarship	147,000	<ul style="list-style-type: none"> Under 35 years of age on April 1 of the year of enrollment Preference is given to government officials and senior students who are planning careers as government officials Non-resident of Japan 	GRIPS Admissions Office online application Embassy of Japan
	Asian Development Bank-Japan Scholarship Program (ADB-JSP)	147,000	<ul style="list-style-type: none"> Under 36 years of age on April 1 of the year of enrollment Citizens of ADB developing countries At least 2 years' work experience Preference is given to those currently working as government officials 	GRIPS Admissions Office online application
Macroeconomic Policy Program (MEP)	Japan International Monetary Fund (Japan-IMF) Scholarship Program for Asia	157,000	<ul style="list-style-type: none"> Under 40 years of age. Preference is normally given to younger candidates Government officials in macroeconomic management of the following countries in Asia and the Pacific region: Bangladesh, Bhutan, Cambodia, China, India, Indonesia, Kazakhstan, Kyrgyz Republic, Laos, Malaysia, Maldives, Mongolia, Myanmar, Nepal, Pacific Island countries, Papua New Guinea, Philippines, Sri Lanka, Tajikistan, Thailand, Timor-Leste, Turkmenistan, Uzbekistan, and Vietnam 	International Monetary Fund Regional Office for Asia and the Pacific
	Japanese Government (MEXT) Scholarship Embassy Recommendation	147,000	<ul style="list-style-type: none"> Under 35 years of age on April 1 of the year of enrollment Preference is given to government officials and senior students who are planning careers as government officials Non-resident of Japan 	Embassy of Japan
Public Finance Program (PF)	Tax Course Joint Japan/World Bank Graduate Scholarship Program (JJ/WBGSP)	152,000	<ul style="list-style-type: none"> Between the ages of 25 and 45, preferably below 40 years of age Government officials of the World Bank borrowing countries with at least 3 years' experience in tax policy and administration 	GRIPS Admissions Office online application
	Customs Course Japan-World Customs Organization (Japan-WCO) Human Resource Development Programme Scholarship	147,000	<ul style="list-style-type: none"> Government officials of developing countries with at least 2 years' experience in customs policy and administration, preferably below 35 years of age The Secretary General of the WCO invites nominations every year from a selected number of WCO Member Customs Administrations. Candidates must be chosen and nominated by their Customs Administrations 	
Economics, Planning and Public Policy Program (EPP)	To be determined	To be determined	<ul style="list-style-type: none"> Talented government officials in Indonesia who are pursuing a Master's degree at one of the designated universities 	GRIPS Admissions Office
Graduate Program in Japanese Language and Culture (JLC)	Japan Foundation Scholarship	—	<ul style="list-style-type: none"> Under 44 years of age on April 1 of the year of enrollment Teachers of the Japanese language belonging to institutions conducting Japanese language education, or governmental organizations (e.g., Ministry of Education) At least 2 years' experience in teaching the Japanese language as of December 1 of the year before the year of enrollment 	Japan Foundation overseas office

Programs	Scholarships	Monthly Stipend (Yen)	Eligibility Requirements	Contact/Application Address
5-Year Ph.D. Programs				
GRIPS Global Governance Program (G-cube)	G-cube Fellowship *This fellowship is subject to income tax.	Master's course 148,000-200,000 Ph.D. course 148,000-180,000	<ul style="list-style-type: none"> High academic distinction 	GRIPS Admissions Office online application
	Japanese Government (MEXT) Scholarship Embassy Recommendation	Master's course 147,000 Ph.D. course 148,000	<ul style="list-style-type: none"> Under 35 years of age on April 1 of the year of enrollment Preference is given to government officials and senior students who are planning careers as government officials Non-resident of Japan 	Embassy of Japan
Policy Analysis Program (PA)	GRIPS Fellowship	Master's course 147,000 Ph.D. course 148,000	<ul style="list-style-type: none"> Achievement of high academic distinction 	GRIPS Admissions Office online application
	Japanese Government (MEXT) Scholarship Embassy Recommendation		<ul style="list-style-type: none"> Under 35 years of age on April 1 of the year of enrollment Preference is given to government officials and senior students who are planning careers as government officials Non-resident of Japan 	GRIPS Admissions Office online application
		GRIPS Recommendation		Embassy Recommendation

Programs	Scholarships	Monthly Stipend (Yen)	Eligibility Requirements	Contact/Application Address
3-Year Ph.D. Programs				
Public Policy Program	GRIPS Fellowship	148,000	<ul style="list-style-type: none"> Achievement of high academic distinction 	GRIPS Admissions Office online application
Security and International Studies Program (SISP)	GRIPS Recommendation		<ul style="list-style-type: none"> Under 35 years of age on April 1 of the year of enrollment Preference is given to government officials and senior students who are planning careers as government officials Non-resident of Japan 	GRIPS Admissions Office online application
State Building and Economic Development Program (SBED)	Japanese Government (MEXT) Scholarship		<ul style="list-style-type: none"> Under 35 years of age on April 1 of the year of enrollment Preference is given to government officials and senior students who are planning careers as government officials Non-resident of Japan 	Embassy of Japan
Science, Technology and Innovation Policy Program (STI)	Embassy Recommendation		Embassy of Japan	
Disaster Management Program	ICHARM Research Assistantship	—	<ul style="list-style-type: none"> Professional knowledge, skills and experience in research and practice in water-related risk management at universities or research institutes 	GRIPS Admissions Office
	JICA AUN/SEED-Net	—	<ul style="list-style-type: none"> Professional knowledge, skills and experience in research and practice in water-related risk management at universities or research institutes Under 35 years of age on October 1 of the year of enrollment From AUN/SEED-Net Member Institutions of Cambodia, Indonesia, Lao PDR, Malaysia, Myanmar, Philippines, Thailand, and Vietnam 	AUN/SEED-Net

Published by the National Graduate Institute for Policy Studies (GRIPS)
Issued in September 2014
Edited by Planning Office, GRIPS
Designed by Satoshi Ando

Photo Copyrights

Architectural photo, pp.1 and pp.6 : Masao Nishikawa
All photographs except those noted above: GRIPS

© GRIPS 2014 Printed in Japan



<http://www.grips.ac.jp>

GRIPS

7-22-1 Roppongi, Minato-ku, Tokyo, 106-8677, Japan
TEL : +81-3-6439-6000 FAX: +81-3-6439-6010

GRIPS Admissions Office

TEL : +81-3-6439-6046 FAX: +81-3-6439-6050 E-mail: admissions@grips.ac.jp